

1998 Imeco Evaporative Condenser- 535 Nominal Tons

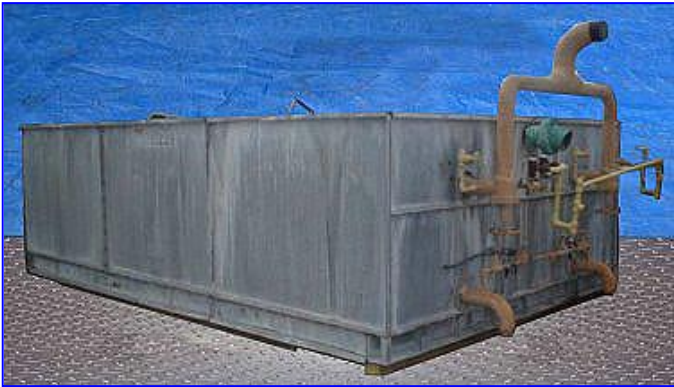
Mfg: Imeco

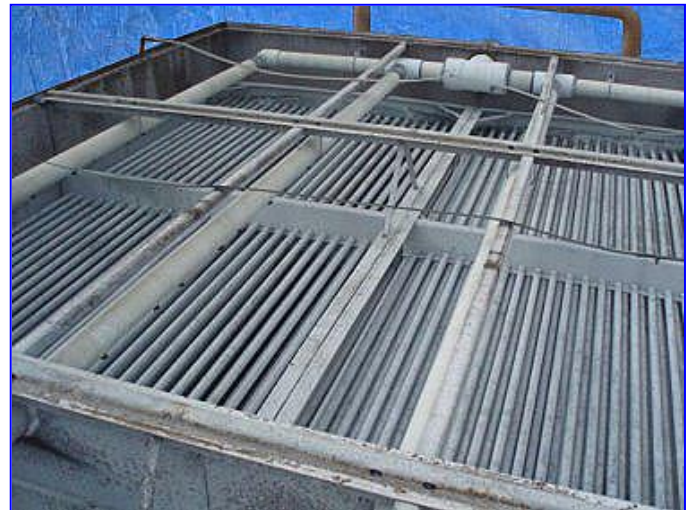
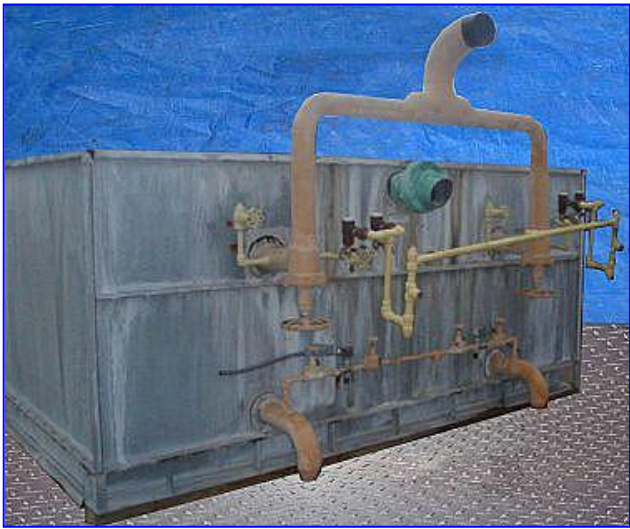
Model: XLP-XL 535

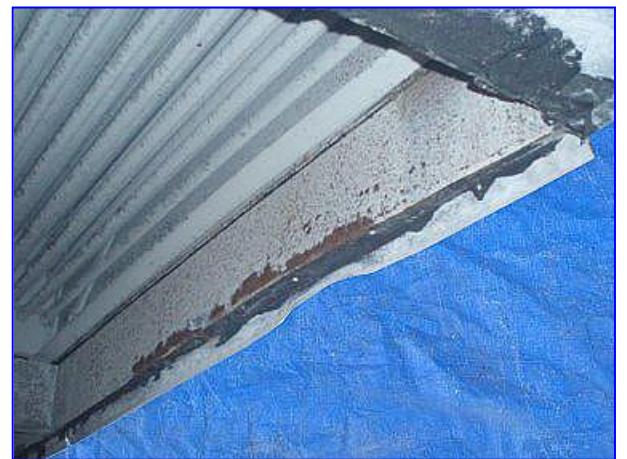
Stock No. ASAC005.


Serial No. 395211 LH

1998 Imeco Evaporative Condenser. Model: XLP-XL 535. S/N: 395211 LH. Belt: B140. Rated at 535 tons using Freon under nominal conditions: 40°F suction, 78°F wet bulb, and 105°F condensing temperatures. Rating for R-717: 385 tons at 20°F suction, 78°F wet bulb, and 96.3 °F condensing temperatures. Rating Maximum pressure: 250 psi. (3) 62 in. dia. fans. Fan Motor, 10 and 4.4 hp, 460 V, 13.1/7.5 amps. Fan Motor, 5 and 2.2 hp, 460 V, 7.1/4.8 FLA. Inlets/outlets: (2) 4 in. dia. ports (media). Overall dimensions: 20 ft. L x 12 ft. W x 16 ft. H. (ACN683).







IMECO  3820 Highway 26 South
Polo, Illinois 61064
PH: (815) 946-2351
FAX: (815) 946-3409

MODEL				SERIAL	
XLP-XL 535				395271 LH	
QTY.	MTR. HP	VOLTAGE	FLA	DATE MANUFACTURED	
1	400	480	38.4A3	1/15/94	
QTY.	MTR. HP	VOLTAGE	FLA	PLANT LOCATION	
1	400	480	38.4A3	DIXON	
QTY.	MTR. HP	VOLTAGE	FLA		
MAX. PRESS.		REFRIGERANT		BELT SIZE	
550		R22		5/8"	
WARNING					

0925492



