

## 1998 Frick Rotary Screw Compressor Package- 100 HP

Mfg: Frick

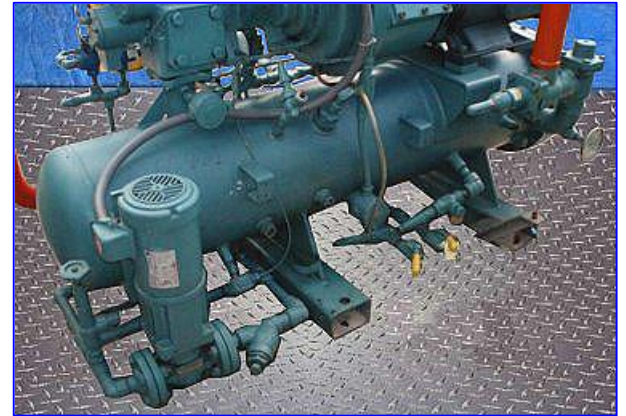
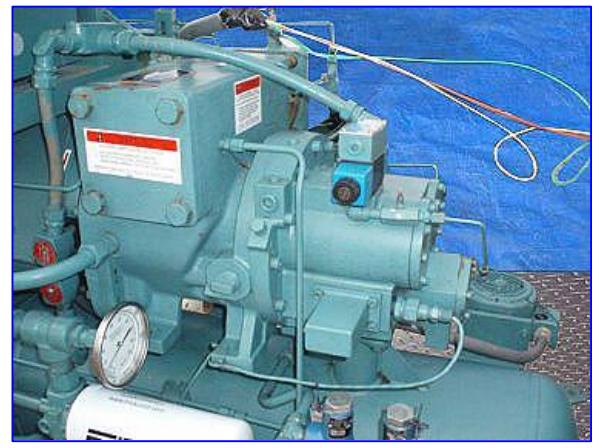
Model: RXF 39H

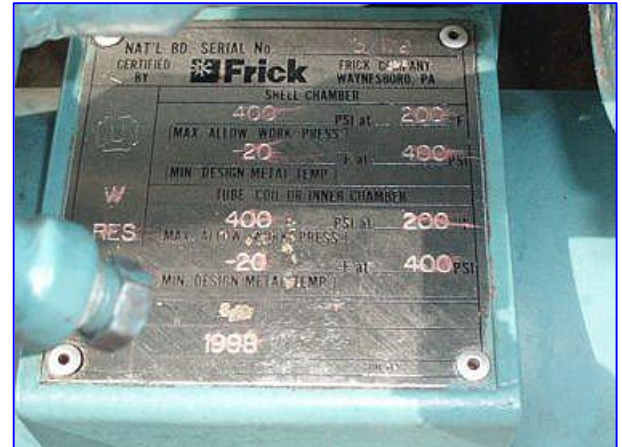
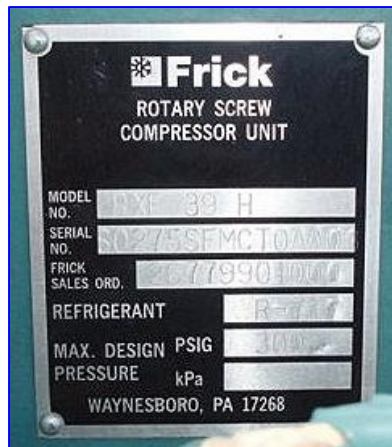
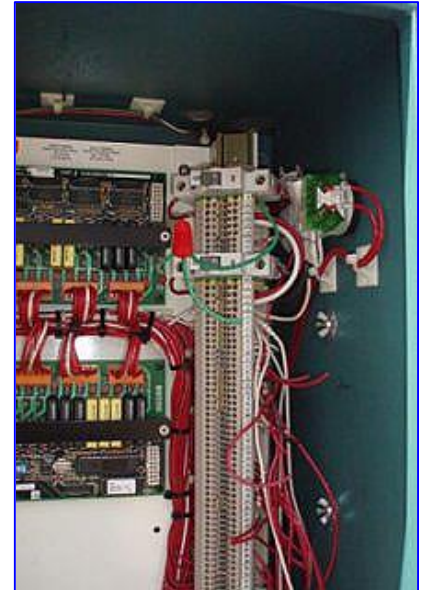
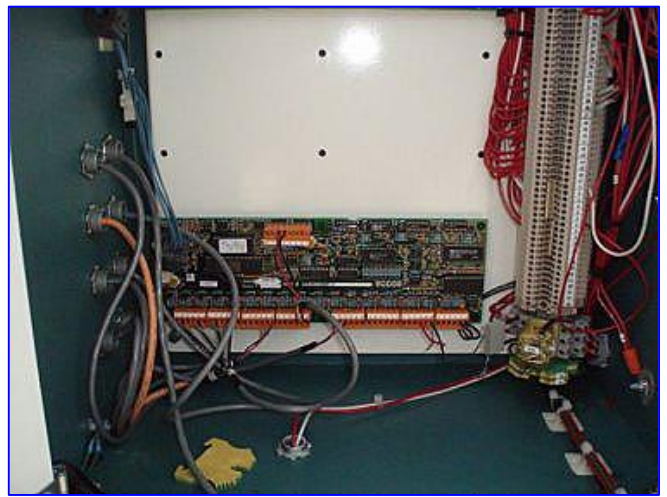
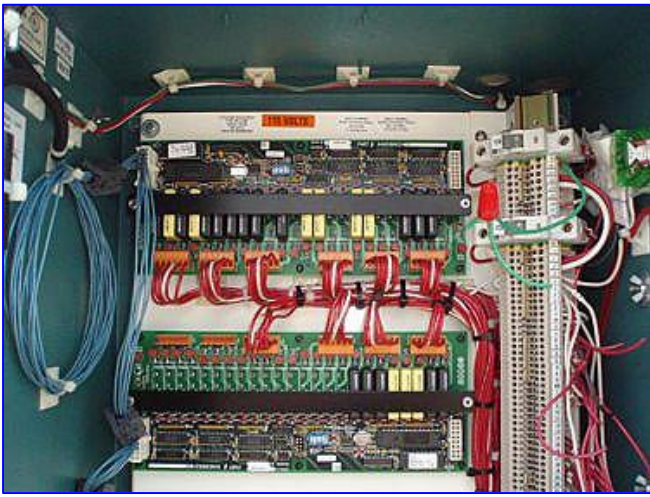
Stock No. ASAC001.

Serial No. S0275SFMCT0AA0

1998 Frick Rotary Screw Compressor Package- 100 HP. Model: RXF 39H. S/N: S0275SFMCT0AA0. S/O: 26779901000. Refrigerant: R-717. Maximum design pressure: 300 psig. 1997 Frick Rotary Screw Compressor, Model and S/N: XJF120L0387FF, maximum speed: 3600 rpm, volume ratio: 22/50, design pressure: 350 psi. 1998 Frick Oil Separator, S/N: 137174, MAWP shell side: 300 psi @ 200 °F, MDMT shell side: -20 °F @ 300 psi. 1998 Frick Oil Cooler, S/N: 137172, MAWP shell side: 400 psi @ 200 °F, MDMT shell side: -20 °F @ 400 psi, MAWP tube side: 400 psi @ 200 °F, MDMT tube side: -20 °F @ 400 psi. Frick Quantum Control Panel, power supply: 115 V, 50/60 Hz, single phase. Ram Starter Control Panel, dimensions: 30 in. L x 16 in. W x 42 in. H. Ram High Efficiency Motor, 100 and 75 hp, 3545/2950 rpm, 208-230/460-190/380 V, 256-282/116-212/106 amps, 60/50 Hz, 3 phase. Viking Rotary Pump, Model: HJ495, S/N: 10894563. U.S. Motor, 1.5 hp, 1730 rpm, 208-230/460 V, 5.1-5.0/2.5 FLA, 60 Hz, 3 phase. Inlets: (1) 4 in. dia. refrigerant suction port. Outlets: (2) 2 in. dia. (pressure relief), (1) 3 in. dia. discharge port. Overall dimensions: 83 in. L x 84 in. W x 80 in. H.







**RAM INDUSTRIES INCORPORATED** CONSOLE DIVISION

JOB #/PART # \_\_\_\_\_  
 DWG #SERIAL # \_\_\_\_\_

TYPE \_\_\_\_\_ VOLTS \_\_\_\_\_ HZ \_\_\_\_\_

LARGEST: HP \_\_\_\_\_ FLA \_\_\_\_\_ LRA \_\_\_\_\_  
 TOTAL: HP \_\_\_\_\_ FLA \_\_\_\_\_ WITHSTAND \_\_\_\_\_

INSTALL THIS EQUIPMENT IN ACCORDANCE WITH NEC REQUIREMENTS.  
 CHECK ALL TERMINATIONS FOR TIGHTNESS PRIOR TO ENERGIZING THIS EQUIPMENT.

FIELD INSTALLED CONDUCTORS SHOULD BE RATED 60°C MINIMUM ON CIRCUITS SUPPLYING 100 AMPS OR LESS, AND 75°C MINIMUM ABOVE 100 AMPS.

**WARNING**  
 THE OPENING OF THE BRANCH-CIRCUIT PROTECTIVE DEVICE MAY INDICATE THAT A FAULTY CURRENT HAS BEEN INTERRUPTED. TO REDUCE THE RISK OF FIRE OR ELECTRICAL SHOCK, ALL COMPONENTS SHOULD BE EXAMINED AND REPLACED IF DAMAGED. IF BURNOUT OF THE CURRENT ELEMENT OCCURS, THE COMPLETE OVERLOAD RELAY MUST BE REPLACED.

RECOMMENDED TIGHTENING TORQUE  
 UNLESS OTHERWISE NOTED ON INDIVIDUAL DEVICE

RAM	SLOTTED HEAD SCREW	HEX HEAD CO. SOCKET HEAD
-----	--------------------	--------------------------



