

Frick Rotary Screw Compressor Unit

Mfg: Frick

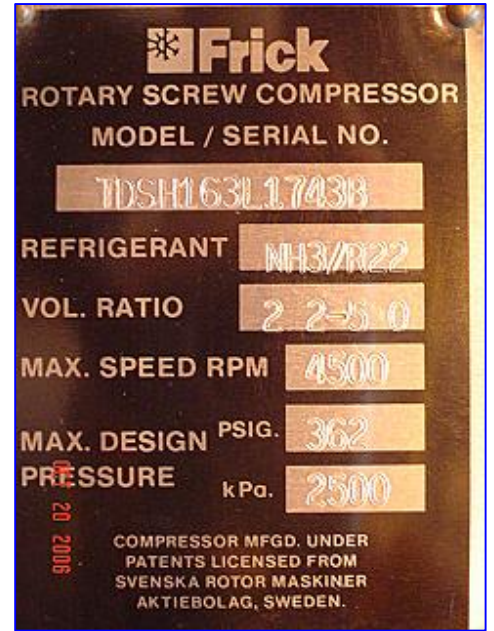
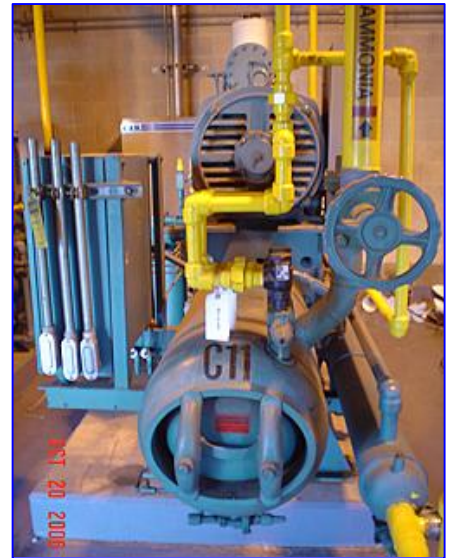
Model: RWBII76

Stock No. ASLC009.

Serial No. SO442NFMCTHAA3

Frick Rotary Screw Compressor Unit. Model RWBII76. S/N SO442NFMCTHAA3. Frick sales order 209503-32. Refrigerant R-717, Max Speed 3600 rpm, max design pressure 300 psi. Rotary Screw Compressor. Model/Serial No. TDSH163L1743B. Refrigerant NH3/R22, vol ratio 2.2 : 5.0, max speed 4500 rpm, max design pressure 362 psig. 200 hp, 460 V, 3 phase, 60 hz, fla 241.7. Hours 52,967.

Note: the following pictures show the exact unit prior to removal.





These pictures show the unit removed and stored at our facility in Edinburg, TX



