

Frick Rotary Screw Compressor Package- 250 HP

Mfg: Frick

Model: RWB II 100

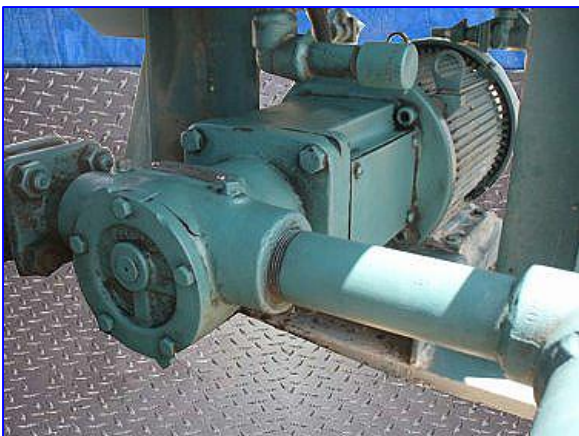
Stock No. ASLC014.

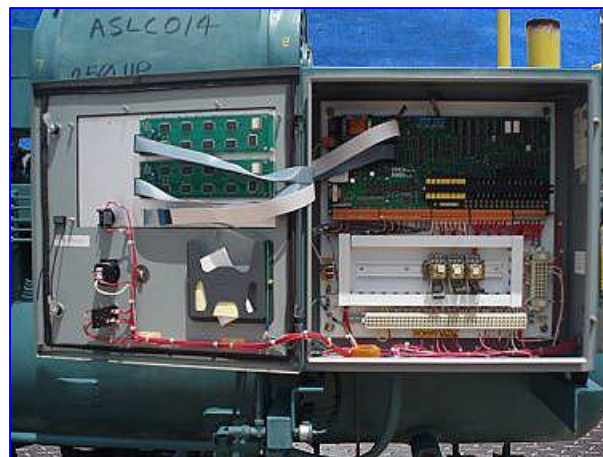
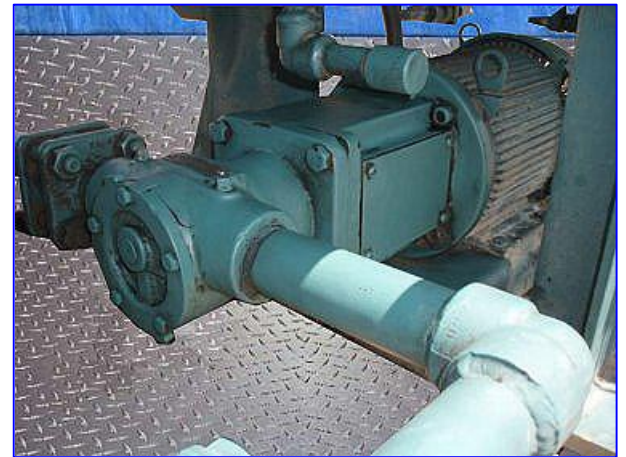
Serial No. SO745NFMCTHAA3

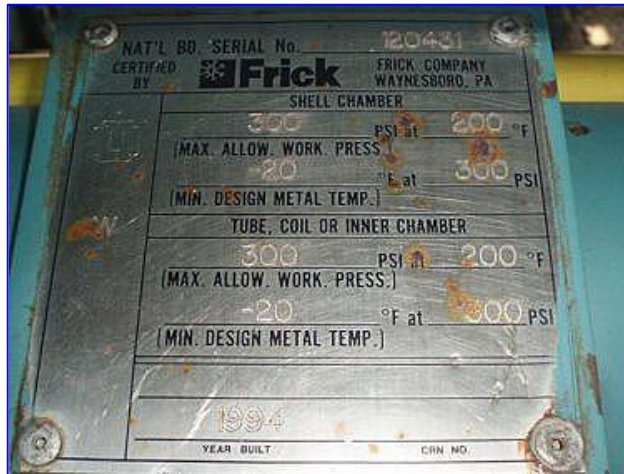
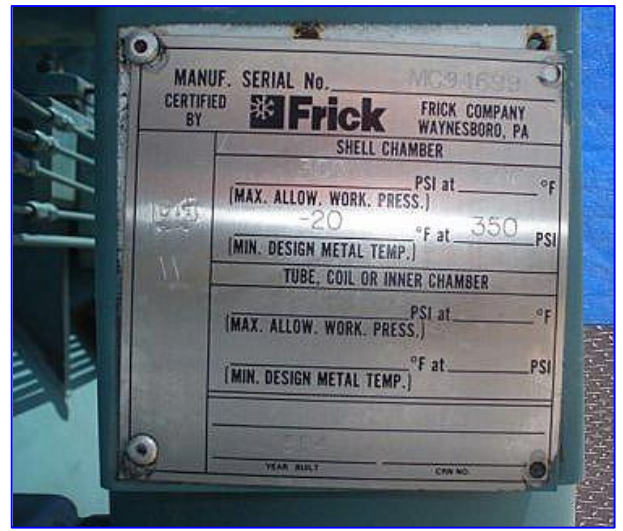
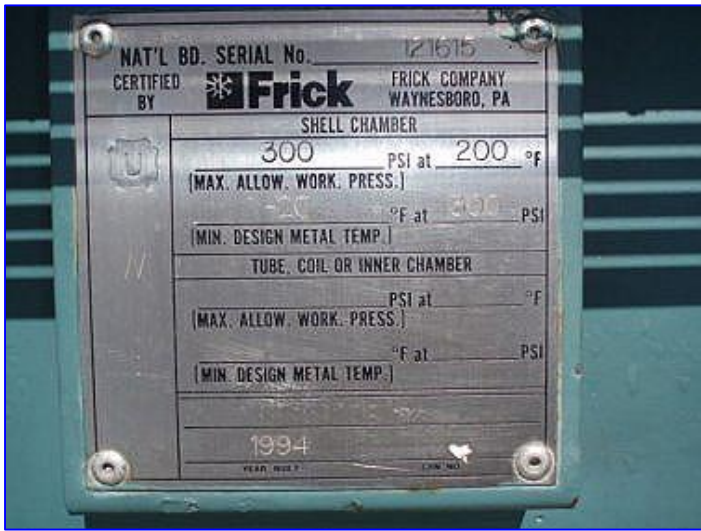
Frick Rotary Screw Compressor Package- 250 HP. Model: RWB II 100. S/N: S0745NFMCTHAA3. S/O: 209503-17. Refrigerant: R-717. Maximum speed: 3600 rpm. Frick Rotary Screw Compressor, Model and S/N: TDSH193S2035C, refrigerant: ammonia/R-22, volume ratio: 22-50, maximum design pressure: 362 psig. 1994 Frick Oil Separator, S/N: 121615, MAWP: 300 psi @ 200 °F, MDMT: -20 °F @ 300 psi. Frick Shell and Tube Condenser, S/N: 120431, shell side MAWP: 300 psi @ 200 °F, shell side MDMT: -20 °F @ 300 psi, tube side MAWP: 300 psi @ 200 °F, tube side MDMT: -20 °F @ 300 psi. Ram Motor, 250 hp, 3565 rpm, 230/460 V, 570/285 amps, 60 Hz, 3 phase. Frick/York RWB II Plus Control Panel. Viking Pump, Model: HV2953-M, S/N: 10479328. U.S. Motor, 3 hp, 1750 rpm, 208-230/460 V, 9.3-9.0/4.5 amps, 60 Hz, 3 phase. Inlets: (1) 2 in. dia. port (condenser), (1) 5 in. dia. refrigerant suction port. Outlets: (1) 1-1/2 in. dia. port (condenser), (1) 1-1/2 in. dia. pressure relief valve, (1) 4 in. dia. refrigerant discharge. Overall dimensions: 13 ft. 6 in. L x 57 in. W x 100 H.

These pictures show the unit removed and stored at our facility in Edinburg, TX









Note: the following pictures show the exact unit prior to removal.





Job NO: SOP 3014234
Drawing No.: FKC-4250Y1033
Volts: 460 Phase: 3 Hz: 60
H.P.: 250 FLA: 294 LRA:
LARGEST H.P.: 250
OCT 20 2006



Frick
ROTARY SCREW
COMPRESSOR UNIT
UNIT MODEL NO: RWB II 100
UNIT STR. NO. S0745NFMCTH4A3
FRICK SALES ORD. 209503-17
REFRIGERANT R-717
OCT 20 2006

