

## Frick Rotary Screw Compressor Unit

**Mfg: Frick**

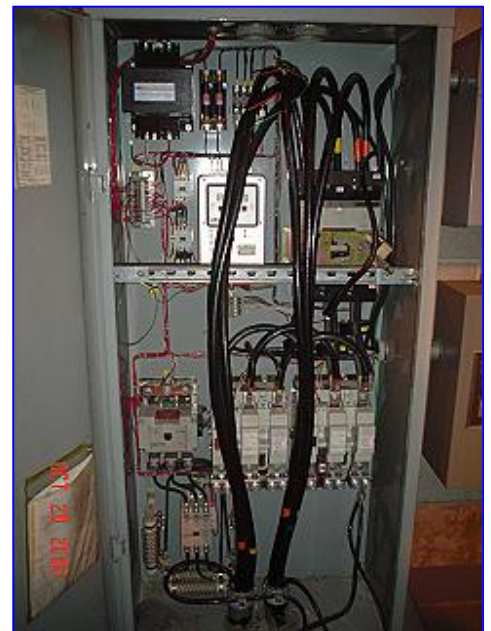
**Model: RWMII 222E**

**Stock No. ASLC018.**

**Serial No. SO468NFMCTHAC3**

Frick Rotary Screw Compressor Unit. Model RWMII 222E. S/N SO468NFMCTHAC3. Frick Sales Order 209503-24. Refrigerant R-717, max speed 3600 rpm, max design pressure 300 psi. Rotary Screw Compressor. Model/Serial No. TDSH233L1709F. Refrigerant NH3/R22, vol ratio 2 2 . 5 0, max speed 4500 rpm, max design pressure 362 psig. 400 hp, 460 V, 3 phase, 60 hz, fla 457.2. Hours 41,082.





Job NO: 3014240	2 of 2	
Drawing No.: FKC-4400Y1035		
Volts: 460	Phase: 3	Hz: 60
H.P.: 400	FLA: 457.2	LRA:
LARGEST H.P.: 400		