

## 2001 Baltimore Aircoil Company Evaporative Condenser – 581 Tons

**Mfg: Baltimore Aircoil Company**

**Model: VC2-581P**

**Stock No: BNDP06**

**Serial No: U013326901MAD**

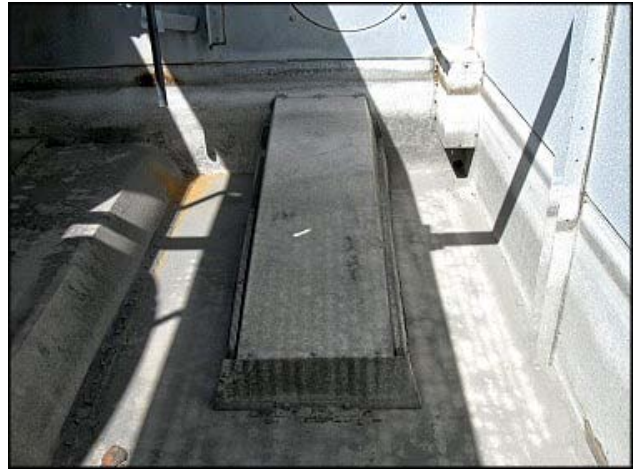
2001 Baltimore Aircoil Company Evaporative Condenser. Model: VC2-581P. S/N: U013326901MAD. Belt no: 2B150. Capacity at nominal ratings: 581 tons using R-22 at 105°F condensing, 40°F suction and 78°F wet bulb temperatures or 418 tons using R-717 at 96.3°F condensing, 20°F suction and 78°F wet bulb temperatures. (1) Goulds centrifugal pump. Impeller diameter: 4-7/8 in. with General Electric motor: 1.5 hp, 3450 rpm, 200-230/460 V, 4.8-4.2/2.1 A, 60 Hz, 3 phase. Inlet/outlet: (1) 2-1/2 in. NPT, (1) 1-1/2 in. NPT. (1) Baltimore Aircoil Co. centrifugal pump: BAC part no: 300563, serial no: NSM013101E. 5.80 impeller diameter. U.S. Electrical motor: 5 hp, 1745 rpm, 208-230/460 V, 15.0-13.7/6.85 A, 60 Hz, 3 phase. Inlet/outlet: (2) 6 in. flanged ports. Two motors running (3) fans: (1) Industrial Electric motor: 15 hp, 1770 rpm, 230/460 V, 38.2/19.1 A, 60 Hz, 3 phase. (1) U.S. Electrical motor: 7.5 hp, 1765 rpm, 208-230/460 V, 20.6-19.2/9.6 A, 60 Hz, 3 phase. (3) 5 ft. 6 in. inner fan dia. Pulleys dia: (2) 5-3/4 in driver, (3) 1 ft. 7 in. driven. Tank dimensions: 1 ft. dia. x 2 ft. 3 in. Inlets/outlets: (1) 6 in. port, (4) 2 in. pipe, (1) 4-1/2 in. pipe, (1) 3 in. pipe, (1) 1 in. pipe, (1) 3/4 in. NPT, (1) 3/4 in. FNPT. (2) 1-3/8 in. pipe, (2) 1 in. FNPT. Overall dimensions: 21 ft. L x 12 ft. W x 16 ft. H.















**Baltimore Aircoil Company** P.O. BOX 960  
MADERA, CA 93639  
(559) 673-9231

**B.A.C.** MOD. # VC2-581P  
SER. # J013326901MAD  
BELT # 2B150

270047 REV. L

270047 REV. L

**BALL BEARING LUBRICATING INSTRUCTIONS**

**1. FAN SHAFT BALL BEARINGS**  
Do not grease bearings on initial startup since bearings are fully greased at the factory.  
Under normal operating conditions, ball bearings should be greased every six months. (AVOID THE USE OF A HIGH PRESSURE GUN.)  
Use any of the following inhibited, water resistant greases:

Rycon Premium #3	Mobil #28
Keystone #4 Light	Aeroshell #7
Bascon #325 (Exxon)	Chevron SRI #2

When greasing fan shaft bearings, purge bearing until new grease appears at grease seals.

**Important** — In addition to normal greasing schedule, fan bearings should be purged whenever unit is shut down for any prolonged period.

**2. MOTOR BALL BEARINGS**  
Motor bearing lubricating requirements vary with the manufacturer, type and size of motor. Refer to specific recommendations enclosed with the instructions attached to the fan section of the unit.

27-76 PA Rev G

MANUFACTURED UNDER ONE OR MORE PATENTS ISSUED IN THE

**2. MOTOR BALL BEARINGS**  
Motor bearing lubricating requirements vary with the manufacturer, type and size of motor. Refer to specific recommendations enclosed with the instructions attached to the fan section of the unit.

27-76 PA Rev G

MANUFACTURED UNDER ONE OR MORE PATENTS ISSUED IN THE USA, CANADA, AND MANY OTHER COUNTRIES

U.S. PATENTS			CANADIAN PATENTS		
4,283,612	4,957,276	5,383,339	1,149,727	1,332,386	
4,361,426	4,964,279	5,386,709	1,152,427	2,016,690	
4,518,544	4,966,007	5,390,505	1,177,386	2,044,322	
4,568,022	5,038,574	5,405,541	1,185,841	2,060,999	
4,601,684	5,150,581	5,431,858	1,193,298	2,069,706	
4,683,101	5,170,633	5,435,382	1,205,004	2,072,697	
4,691,769	5,180,103	5,480,564	1,218,357	2,085,278	
4,699,211	5,193,352	5,596,877	1,230,991	2,124,361	
4,737,321	5,226,661	5,663,536	1,241,268	2,127,772	
4,749,307	5,232,636	5,724,828	1,244,318	2,141,748	
4,831,831	5,234,161	5,816,318	1,263,850	2,176,528	
4,873,026	5,273,687	5,904,864	1,289,460		
4,891,169	5,328,600		1,318,239		

ADD'L PATENTS PENDING

27-76 PA Rev G

**CIRCULATED WATER QUALITY GUIDELINES**

**CIRCULATED WATER QUALITY GUIDELINES**  
For Units Constructed with G210 Galvanized Steel.

- A water treatment program to control biological contamination is recommended for all installations. Additional treatment to control scale and corrosion may be necessary, depending upon site conditions.
- CONCENTRATION OF DISSOLVED SOLIDS **MUST BE CONTROLLED BY BLEEDING A SMALL PORTION OF THE CIRCULATING WATER FROM THE SYSTEM.**
- Maintain pH between 7.0 and 9.0. If the pH is maintained at or above 8.3, periodically passivate the galvanized steel to prevent formation of "white rust" zinc corrosion products.
- Batch-feeding of treatment chemicals is **NOT** recommended.
- Refer to B.A.C. "Operating and Maintenance Instructions" for further details.
- Consult a competent water treatment specialist for specific program recommendations.

270159M5PA Rev. C.





**GE Motors & Industrial Systems**  
**A-C MOTOR**  
**CAT NO: K236**  
**- WARNING -**  
 TERMINAL COVER MUST BE IN PLACE FOR SAFE OPERATION  
 GROUND IN ACCORDANCE WITH LOCAL & NATIONAL ELECTRICAL CODES  
 KEEP FINGERS & OBJECTS AWAY FROM OPENINGS & ROTATING PARTS  
 DISCONNECT POWER SOURCES BEFORE TOUCHING INTERNAL PARTS

<b>MOD 5K49PN2330</b> HP 1.5 V 200-230/460 RPM 1450 4.4-4.2/2.1 SFA 8.0-5.2/2.6 AMP 40 C 2.8 B 50 HZ 1 HP 2850 RPM 190-220/380 VOLT 34-32/1.7 FLA 4.4-4/2.0 SFA 1.4 SF CAT NO K236 RPL221929	<b>HZ 60</b> <b>PH 3</b> <b>CODE L</b> <b>SF 1.30</b> <b>FR56J</b> <b>50 HZ 1 HP 2850 RPM</b> <b>190-220/380 VOLT</b> <b>34-32/1.7 FLA</b> <b>4.4-4/2.0 SFA 1.4 SF</b> <b>CAT NO K236</b>	<b>GREEN GRD. 12 RED 20</b>  <b>LOW VOLTAGE</b> <b>HIGH VOLTAGE</b> TO REVERSE ROTATION, INTERCHANGE EXTERNAL CONNECTION TO ANY TWO LINE LEADS HP 145405AA	<b>PACK: S</b> <b>ACCESSORIES:</b> <b>PERMANENTLY LUBRICATED BALL BEARINGS, RELUBRICATION NOT REQUIRED</b> <b>Made in USA</b>
--	--	---	--

**CATALOG # UJ552AM**      **MODEL # B076B**  
**ENCL TE**  
**FR 184JM**      **TYPE UT-2**  
**PH 3**      **MAX AMP 40**      **C 101 D11-B075B-M**  
**CLASS F**      **DUTY CONT**      **WT**      **BAL**

<b>HZ 60</b> <b>HP 5.0</b> <b>RPM 1745</b> <b>SF 1.25</b> <b>DESIGN B</b> <b>CODE J</b> <b>GUARANTEED EFFICIENCY</b> <b>NEW NEMA NOM EFFICIENCY</b> 85.5 <b>VOLTS</b> 208-230/460 <b>FLAMPS</b> 15.0-13.7/6.85 <b>SF AMPS</b> 16.6/8.3	<b>HZ 50</b> <b>HP 4.7</b> <b>RPM</b> <b>SF</b> <b>DESIGN</b> <b>CODE</b> <b>GUARANTEED EFFICIENCY</b> <b>NEW NEMA NOM EFFICIENCY</b> <b>VOLTS</b> 190/380 <b>FLAMPS</b> 15.3/7.65 <b>SF AMPS</b>
--	---

**USABLE ON 208V 60 HZ**  
**AT 16.2 AMPS MAX**

**MADE IN MEXICO**      **U.S. ELECTRICAL MOTORS**      **EMERSON**  
 DIVISION OF EMERSON ELECTRIC CO.      ST. LOUIS, MO



**CATALOG #**      **MODEL # AD83A**  
**ENCL TE**  
**FR 213T**      **TYPE FUT**  
**PH 3**      **MAX AMP 40**      **C 101 D05-AD83A-M**  
**CLASS F**      **DUTY CONT**      **WT**      **BAL**

<b>HZ 60</b> <b>HP 7.5</b> <b>RPM 1765</b> <b>SF 1.25</b> <b>DESIGN B</b> <b>CODE J</b> <b>GUARANTEED EFFICIENCY</b> <b>NEW NEMA NOM EFFICIENCY</b> 87.5 <b>VOLTS</b> 208-230/460 <b>FLAMPS</b> 20.6-19.2/9.6 <b>SF AMPS</b> 23.6/11.8	<b>HZ 50</b> <b>HP 7.5</b> <b>RPM 1445</b> <b>SF 1.0</b> <b>DESIGN</b> <b>CODE F</b> <b>GUARANTEED EFFICIENCY</b> <b>NEW NEMA NOM EFFICIENCY</b> 84.0 <b>VOLTS</b> 190/380 <b>FLAMPS</b> 23.2/11.6 <b>SF AMPS</b>
--	---

**USABLE ON 208V 60 HZ**  
**AT 26.2 AMPS MAX**

**MADE IN MEXICO**      **U.S. ELECTRICAL MOTORS**      **EMERSON**  
 DIVISION OF EMERSON ELECTRIC CO.      ST. LOUIS, MO