

## 1995 APV Titanium and Monel Paravap Plate Evaporator

**Mfg: APV**

**Model: SR35**

**Stock No: CHNK001**

**Serial No: 30635.1.W.O: 30635-1**

1995 APV Titanium and Monel Paravap Plate Evaporator. Model: SR35. S/N: 30635.1.W.O: 30635-1. Nat'l Bd: 6629. Number of titanium plates: 46. Heat transfer surface area: approx. 192 sq. ft. Number of dividers: 1. MAWP: 150 psig @ 300 °F. MDMT: -20 °F @ 150 psig. Inlets/outlets: (8) 3 in. dia. flanged ports. 1,070 lbs/hr water evaporation per hour. Running at full capacity when shut down in January of 2006.

J.D. Cousins Inc. Monel Vertical Separator- 180 Gallon. Model: BIOPRODUCTS. S/N:695-2.W.O: 30342. Inside straight-wall dimensions: 27 in. dia. x 6 ft. 3 in. H. MAWP: 15 psi and full vacuum. Design temperature: 300° F. Includes (2) Sight glasses and CIP sprayball. Inlets/outlets: (2) 6 in. dia. 150lb ANSI flanged ports (product in/out).

Alfa Laval Plate Heat Exchanger. Model: M10-MFG. S/N: 30104-83055. Number of plates: 32. Heat transfer surface area: approx. 71.02 sq. ft. MAWP: 15 psi @ 300°F. Inlets/outlets: (4) 4 in. dia. 150lb ANSI flanged ports.

APV Crepaco Centrifugal Pump. Model: 6V2. S/N: P-0218-95. U.S. Electrical Motor, 2 hp, 1725 rpm, 208-230/460 V, 6.5-6.2/3.1 amps, 60 Hz, 3 phase. Inlets/outlets: (2) 2 in. dia. flanged ports. Overall dimensions: 1 ft. 8 in. L x 9 in. H. x 9 in. H.

Ingersoll-Dresser Centrifugal Pump. Model: D520. S/N: RA5R. Size: 1.25 x 1 x 4. Impeller diameter: 4 in. Leeson Electric Motor, 2 hp, 3450 rpm, 208-230/460 V, 5.6-2.8 amps, 60 Hz, 3 phase. Inlet: (1) 2 in. dia. FNPT fitting. Outlet: (1) 1-1/2 in. dia. FNPT fitting. Overall dimensions: 1 ft. 3 in. L x 9 in. W x 1 ft. H.

Sihi Close-Coupled Vacuum Pump. Model: LEMA 40 AZ8314B4. S/N: 3443544. Stock No: 906862. Baldor Industrial Motor, 2 and 1.7 hp, 3450/2850 rpm, 208-230/460-190/380 V, 5.7-5.4/2.7-5.6/2.8 amps, 60/50 Hz, 3 phase. Inlets/outlets: (2) 1-1/2 in. dia. FNPT fittings. Overall dimensions: 1ft. 8 in. L x 8 in. W x 9 in. H.

APV Crepaco Centrifugal Pump. Model: 8V2-3-18. S/N: P-1795. U.S. Electrical Motor, 3 hp, 1795 rpm, 208-230/460 V, 8.5-6.0/4.0 amps, 60 Hz, 3 phase. Inlet: (1) 3 in. dia. flanged port. Outlet: (1) 2-1/2 in. dia. flanged port. Overall dimensions: 2 ft. L x 1 ft. W x 1 ft. 3 in. H.

Viking Positive Displacement Pump. Model: KK4127-A. S/N: 10541834. Mobilgear Drive, ratio: 5.90. Inlet: (1) 3 in. dia. flanged port. Outlet: (1) 2-1/2 in. dia. flanged port. Overall dimensions: 2 ft. 11 in. L x 2 ft. 7 in. W x 10 in. H.

Stainless Steel Balance Tank- 40 Gallon. Inside tank dimensions: 24 in. dia. x 20 in. H. Tri-clover filler gauge. Type: 30-102-316. S/N: 224216-004. Inlet: (2) 2 in. dia. flanged ports, (2) 2 in. dia. ports. Outlet: (1) 3-1/2 in. dia. port, (1) 2 in. dia. flanged port.

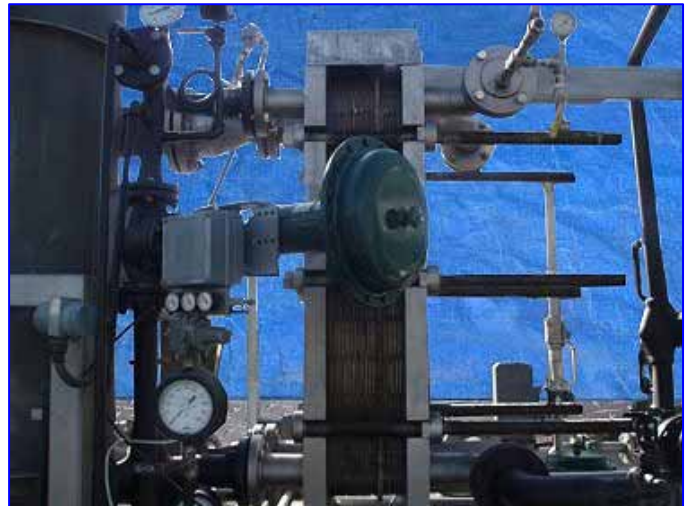
APV Stainless Steel Control Panel. Calnex power supply: 5 V @ 500 mA. Omron Power Supply, input: 100/120-200/240 VAC, 2.5/1.5 amps, output: 24 VDC, 4.2 amps. (5) Honeywell UDC3000 Versa-Pro Process Controllers, power supply: 90-264 VAC, 60 Hz. Acme 1.5 KVA Industrial Control Transformer, Type No. TA-2-81218, power supply: 50/60 Hz.

Foxboro I/A Series Magnetic Flow Transmitter. Model: IMT20-TA10FGZ. S/N: 95F42108-3-1. Power supply: 100 VAC, 50/60 Hz.

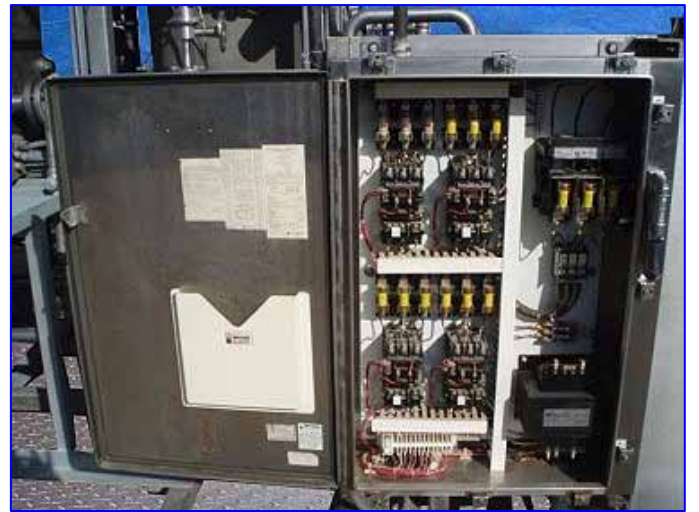
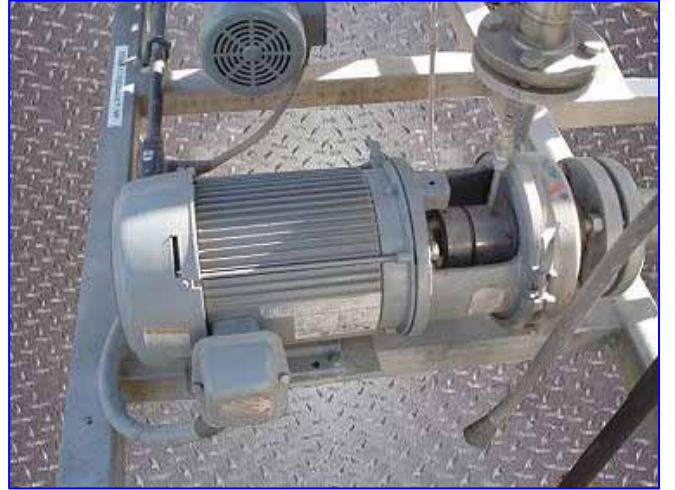
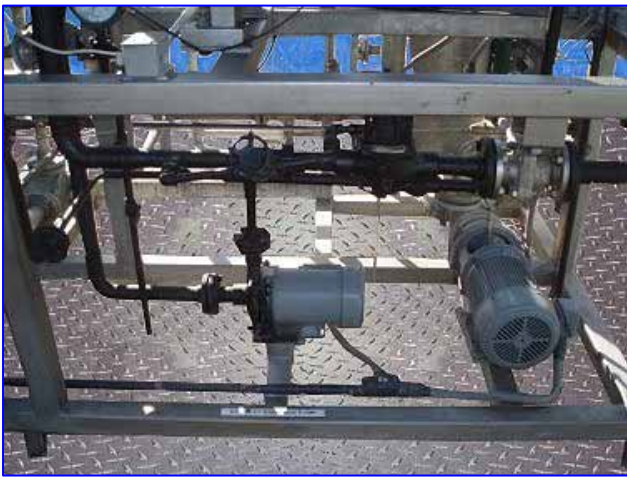
(2) Fisher Pneumatic Actuator Valves. S/N's: 13606343, 13606342. Type: EZ. Body: STL. Range: 3-15.  
Stem: SST. Seat: SST.  
Complete spare set of Titanium Plates.

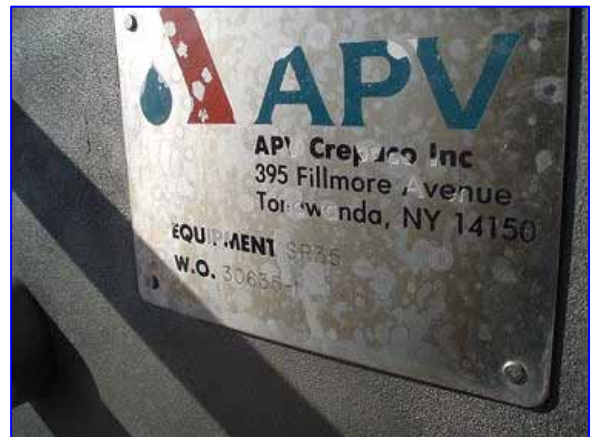
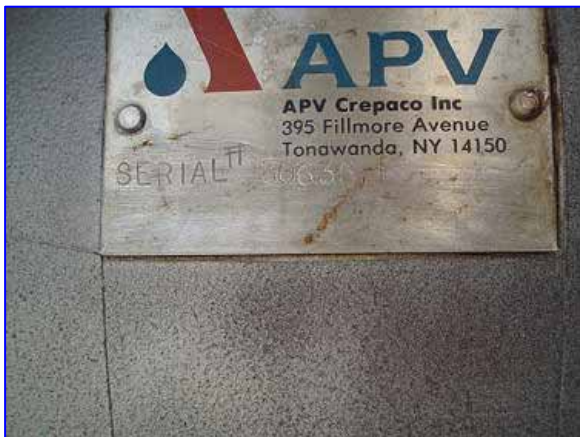
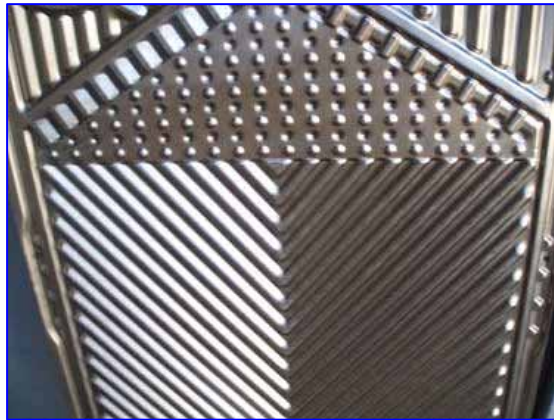
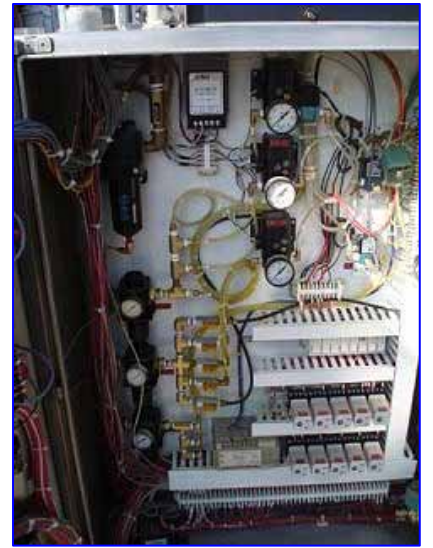
Overall dimensions: 12 ft. L x 7 ft. 1 in. W x 11 ft. H.

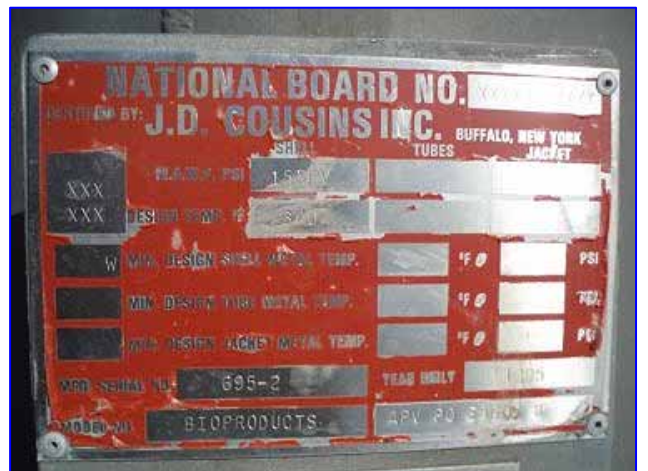
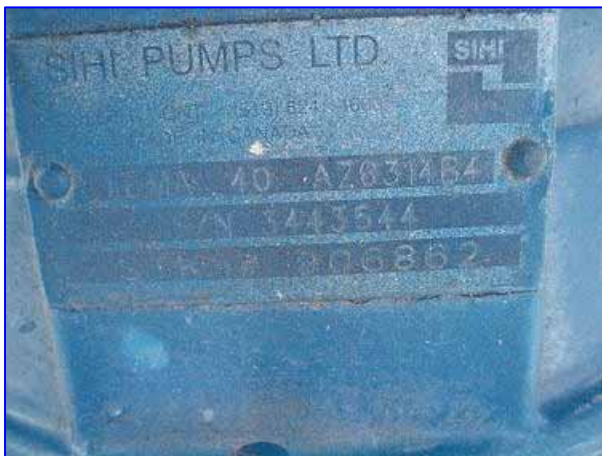
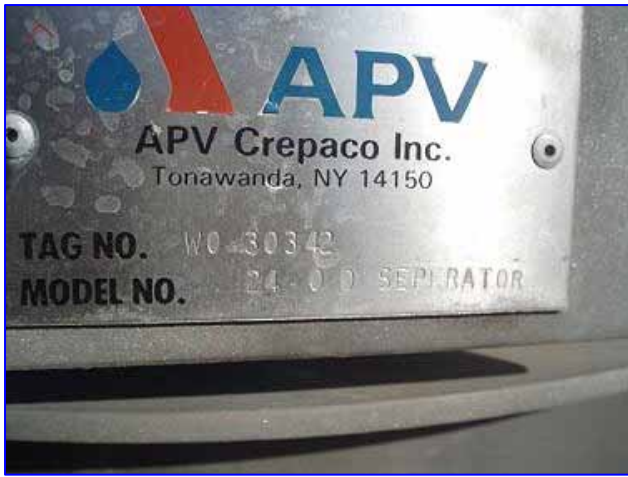












Note: the following pictures show the exact unit prior to removal.





