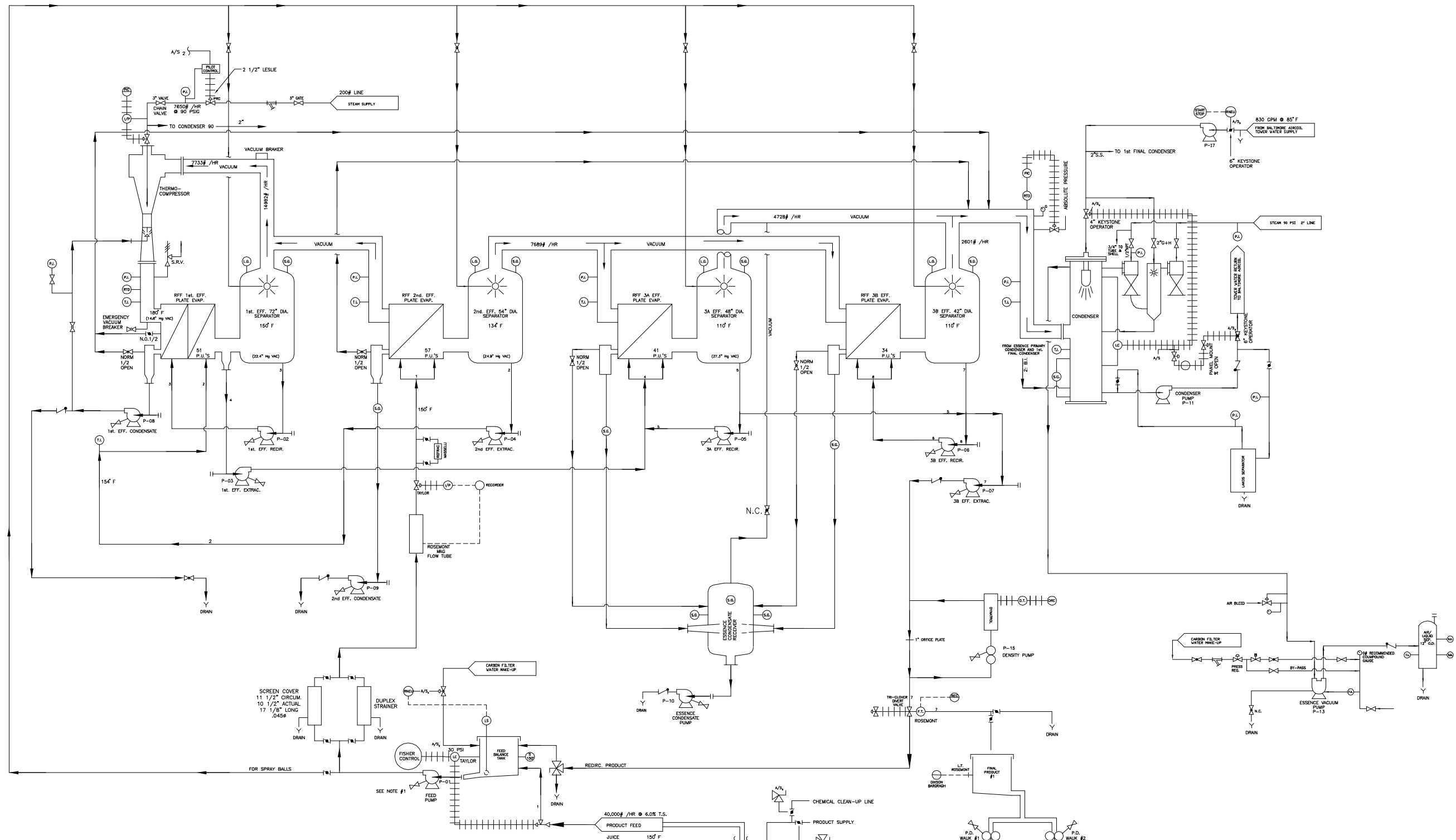


FLOW SCHEMATIC FOR TRIPPLE EFFECT FIVE STAGE EVAPORATOR WITH ESSENCE RECOVERY

- | | | | | | | | | | | | | | | | |
|--|---|--|--|--|--|--|---|---|--|---|---|---|--|--|---|
| P-01
V7 MPH-QWP BAL FEED PUMP
2.5" X 2" MP, 4.96"
ALFA-LAVAL
MODEL LKH10MFG18T | P-02
1# RECIRC. PUMP
2.5" X 2" MP, 4.96"
ALFA-LAVAL
MODEL LKH35MFG18T | P-03
1# EFF. EXTRACT PUMP
2.5" X 2" MP, 4.96"
ALFA-LAVAL
MODEL LKH35MFG18T | P-04
2# EFF. EXTRACT PUMP
2.5" X 2" MP, 4.96"
ALFA-LAVAL
MODEL LKH10MFG18T | P-05
3# EFF. RECIRC. PUMP
2.5" X 2" MP, 4.96"
ALFA-LAVAL
MODEL LKH20MFG18T | P-06
3# EFF. RECIRC. PUMP
2.5" X 2" MP, 4.96"
ALFA-LAVAL
MODEL LKH20MFG18T | P-07
3# EFF. EXTRACT PUMP
2.5" X 2" MP, 4.96"
ALFA-LAVAL
MODEL LKH35MFG18T | P-08
1# EFF. CONDENS. PUMP
2.5" X 2" MP, 4.96"
ALFA-LAVAL
MODEL LKH25MFG18T | P-09
2# EFF. CONDENS. PUMP
2.5" X 2" MP, 4.96"
ALFA-LAVAL
MODEL LKH25MFG18T | P-10
ESS. CONDENS. PUMP
(CENT.) WALKESHA MODEL 2045
1 1/2" HP @3500 RPM
4" MP. | P-11
CONDENSER DISCHARGE PUMP
GOLDS 3194 XLT-X
40- HP @1800 RPM 3647
8 X 6 X 13 13" MP. | P-13
VACUUM PUMP (SH)
3708 51H
7 1/2" HP @1750 RPM | P-15
DENSITY PUMP
WALK POSITIVE DISPLACEMENT
MODEL 30
ON PLATFORM UNDER 3B EFF. | P-17
INFED CONDENSER PUMP
DOLDS 3196
6 X 4 X 10 8.75" MP.
5/8" 7500077.1 | P-18
#1 CHILLER PUMP
WALKESHA MODEL 60
7.5 HP | P-20
#2 CHILLER PUMP
WALKESHA MODEL 60
10 HP |
|--|---|--|--|--|--|--|---|---|--|---|---|---|--|--|---|



- | | |
|--|--|
| <ul style="list-style-type: none"> ===== TOWER WATER ===== CONDENSATE ===== ESSENCE ===== PRODUCT PIPING ===== SERVICE PIPING ===== INSTRUMENT AIR ===== ELECTRICAL SIGNAL ===== FILLED CAPILLARY ===== STEAM ===== WATER MAKE-UP ===== PUMP SEALS ===== CHILLED WATER | <ul style="list-style-type: none"> ⊗ GATE VALVE ⊙ GLOBE VALVE ⊕ BUTTERFLY VALVE ⊖ CHECK VALVE ⊗ SOLENOID VALVE ⊙ CONTROL VALVE ○ REMOTE MOUNTED INSTRUMENT ⊙ INSTRUMENT MOUNTED ON PANEL FACE ⊙ INSTRUMENT MOUNTED BEHIND PANEL ⊙ MAGNETIC FLOW TUBE (ROSEMONT) A/S = (REGULATED) 20 PSIG CLEAN DRY AIR SUPPLY A/S₂ = CLEAN DRY AIR SUPPLY AS NOTED Y = DRAIN ⊠ = STEAM TRAP L.G. = LIGHTED SIGHT GLASS T.I. = TEMP. INDICATOR P.I. = PRESSURE INDICATOR P.I.C. = PRESSURE INDICATOR CONTROL P.T. = PRESSURE TRANSMITTER L.C. = LEVEL CONTROL S.G. = SIGHT GLASS L.T. = LEVEL TRANSMITTER NOTE - SEAL WATER FOR ALL PUMPS EXCEPT P-11 & P-12, P-17 |
|--|--|