



BALTIMORE AIRCOIL
 ONE OF THE
Amsted
 INDUSTRIES

SUBMITTAL DATA FORM

| | | | |
|--|--|--|---|
| C U S T O M E R | CAL-AIR, INC. ATTN: DON SMITH 1555 SOUTH SEVENTH STREET SAN JOSE, CA 95112 | DATE P.O. NO. B.A.C. NO. MODEL NO. | 10/20/2000 5003 U012574801/02/03-MAD (3) FXV-Q641R |
| | PROJECT: ZHONG TECHNOLOGY BUILDING 3 & 4 - OAKLAND, CA ENGINEER: CAL-AIR, INC. - SAN JOSE, CA B.A.C. REP: JOSEPH H. SCHAUF COMPANY, INC - CAMPBELL, CA | | |
| CERTIFIED CAPACITY: 900 USGPM OF WATER FROM 95 F TO 85 F AT 70 F ENTERING WET BULB AND 4.0 PSI FLUID PRESSURE DROP. | | FXV- CLOSED CIRCUIT COOLING TOWER "ALL INFORMATION IS PER UNIT" | |
| FAN MOTOR(S): (1) 30 HP, 1800 RPM, 3 PHASE, 60 HERTZ, 460 VOLTS, INVERTER DUTY, TEAO ENCLOSURE. FAN DRIVES BASED ON 0" ESP. | | | |
| PUMP MOTOR(S): (1) 5 HP, 1800 RPM, 3 PHASE, 60 HERTZ, 230/460 VOLTS, TEFC ENCLOSURE. | | | |
| NOTE: Two speed fan motors and/or Energy Miser Fan Systems require a starter that incorporates a 15 second time delay when switching from high to low speed. Inverter Duty Fan Motors, furnished in accordance with NEMA Standard MG.1Part 31 are required for applications using Variable Frequency Drives for fan motor control. | | | |

10 COPIES OF SUBMITTAL DATA FOR RECORD

| FEATURE | | FEATURE | |
|--|--------------------------|----------------------------------|------------|
| UNIT DIMENSIONS & SUPPORT DATA | BAC-17093A BAC-17153A | RECOMMENDED CONDUIT INSTALLATION | BAC-16526A |
| MECHANICAL SPECIFICATIONS | | | |
| BALTIBOND® CORROSION PROTECTION SYSTEM | | | |
| INTERNAL LADDER & SERVICE PLATFORM | BAC-16522A | | |
| 6" VICTAULIC FLUID CONNECTIONS | | | |

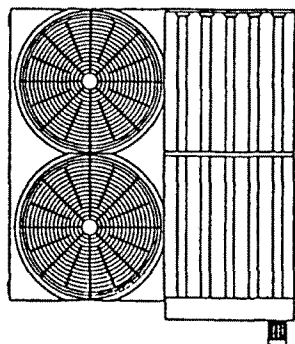
THANK YOU FOR YOUR ORDER ACCEPTED AT THE B.A.C. MADERA PLANT ON: 10/18/2000.

AN APPROVED SUBMITTAL IS NOT REQUIRED. YOUR ORDER IS SCHEDULED TO SHIP FROM OUR FACTORY APPROXIMATELY 11/17/2000. PLEASE BE PREPARED FOR THE ARRIVAL OF THIS EQUIPMENT, AS OUR FACILITIES CANNOT ACCOMMODATE THE STORAGE OF COMPLETED UNITS.

JOSEPH H. SCHAUF COMPANY, INC - FRESNO, CA

P.O. BOX 7322, BALTIMORE, MARYLAND 21227 / TELE: (410) 799-6200 / FAX: 410-799-6416
 P.O. BOX 960, MADERA, CALIFORNIA 93639 / TELE: (559) 673-9231 / FAX: 559-673-5095
 P.O. BOX 317, PAXTON, ILLINOIS 60957 / TELE: (217) 379-2311 / FAX: 217-379-3522
 P O BOX 402, MILFORD, DELAWARE 19963 / TELE: (302) 422-3061 / FAX: 302-422-9269

[V102000]

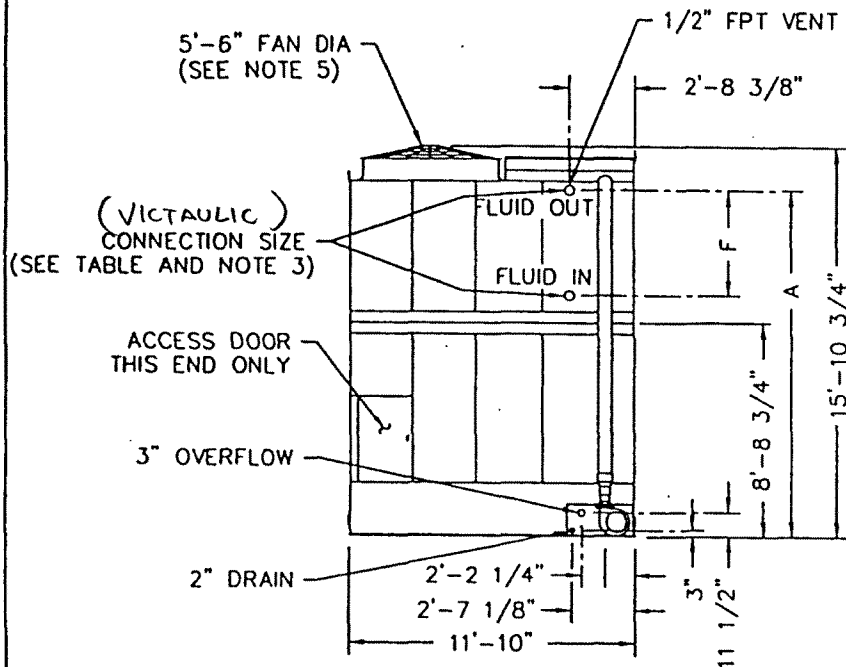


PLAN VIEW

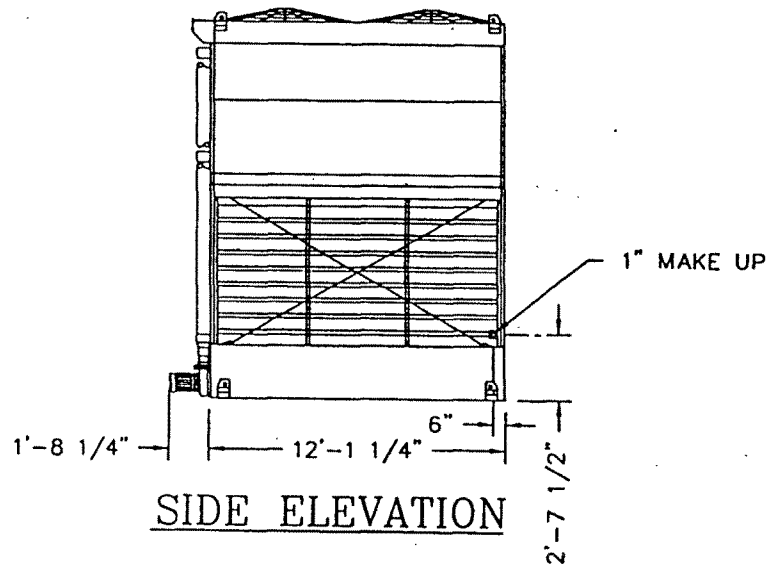
| MODEL NUMBER | SHIPPING WEIGHT | OPERATING WEIGHT | HEAVIEST SECTION (UPPER) | CONNECTION SIZE | A | F |
|----------------------|-------------------|-------------------|--------------------------|-----------------|--------|---------|
| FXV- 641 | 10,890 | 18,560 | 6730 | 4" | 14'-2" | 24" |
| FXV- 642 | 11,930 | 20,050 | 7770 | 4" | 14'-2" | 33 1/4" |
| FXV- 643 | 12,980 | 21,550 | 8820 | 4" | 14'-2" | 42 1/2" |
| FXV- 644 | 14,040 | 23,050 | 9880 | 4" | 14'-2" | 51 3/4" |
| FXV- Q640 | 11,930 | 20,050 | 7770 | 6" | 14'-1" | 31 3/8" |
| FXV- Q641 R | 14,040 | 23,050 | 9880 | (VIC.) 6" | 14'-1" | 49 7/8" |

NOTES:

1. ALL DIMENSIONS ARE IN FEET AND INCHES. WEIGHTS ARE IN POUNDS.
2. DIMENSIONS SHOWING LOCATION OF COIL CONNECTIONS ARE APPROXIMATE AND SHOULD NOT BE USED FOR PREFABRICATION OF CONNECTING PIPING.
3. COIL CONNECTIONS ARE IPS BEVELLED FOR WELDING.
4. CONNECTIONS 3" & SMALLER ARE MPT.
5. THE AREA ABOVE THE DISCHARGE OF THE FAN MUST BE UNOBSTRUCTED.
6. FOR WEIGHT LOADING AND SUPPORT REQUIREMENTS REFER TO THE SUGGESTED STEEL SUPPORT DRAWING.



END ELEVATION



SIDE ELEVATION

(RH UNIT)

B.A.C. ORDER NO: U012574801/02/03-MAD

DATE: 10/20/00



BALTIMORE AIRCOIL COMPANY

SERIES 1500 FLUID COOLER

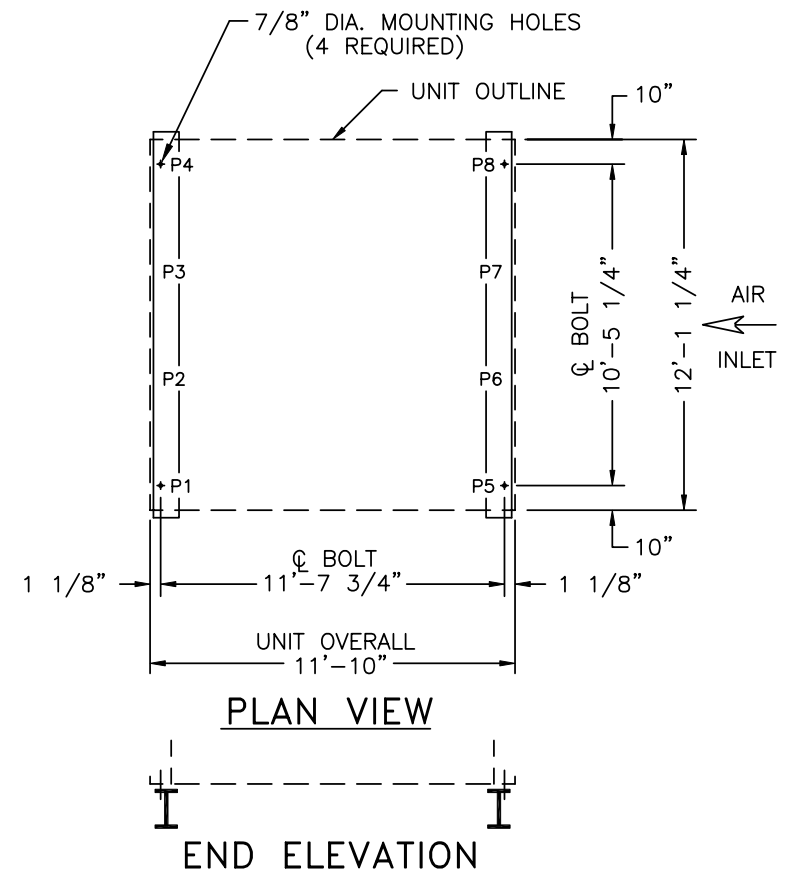
DRAWING NUMBER: BAC-17093A

A

| MODEL NUMBER | SHIPPING WEIGHT | WEIGHT LOADING (LBS.) | | | | | | | | |
|--------------|-----------------|-----------------------|------|------|------|------|------|-----|-----|------|
| | | OPER. WEIGHT | P1 | P2 | P3 | P4 | P5 | P6 | P7 | P8 |
| FXV- 641 | 10,890 | 18,560 | 2158 | 1238 | 1238 | 2158 | 5283 | 601 | 601 | 5283 |
| FXV- 642 | 11,930 | 20,050 | 2370 | 1241 | 1241 | 2370 | 5813 | 601 | 601 | 5813 |
| FXV- 643 | 12,980 | 21,550 | 2584 | 1244 | 1244 | 2584 | 6346 | 601 | 601 | 6346 |
| FXV- 644 | 14,040 | 23,050 | 2798 | 1248 | 1248 | 2798 | 6878 | 601 | 601 | 6878 |
| FXV- Q640 | 11,930 | 20,050 | 2370 | 1241 | 1241 | 2370 | 5813 | 601 | 601 | 5813 |
| FXV- Q641 | 14,040 | 23,050 | 2798 | 1249 | 1248 | 2798 | 6878 | 601 | 601 | 6878 |

NOTES:

1. SUPPORTING STEELWORK AND ANCHOR BOLTS TO BE DESIGNED AND FURNISHED BY OTHERS.
2. ALL SUPPORTING STEEL MUST BE LEVEL AT TOP.
3. BEAMS SHOULD BE SELECTED IN ACCORDANCE WITH ACCEPTED STRUCTURAL PRACTICE, MAXIMUM DEFLECTION OF BEAM UNDER UNIT TO BE 1/360 OF SPAN, NOT TO EXCEED 1/2 INCH.
4. ALTERNATELY THE UNIT MAY BE SUPPORTED ON COLUMNS AT THE FOUR CORNERS OF THE UNIT. CONSULT YOUR BAC REPRESENTATIVE FOR DETAILS.
5. IF VIBRATION ISOLATION RAILS ARE USED BETWEEN UNIT AND SUPPORTING STEEL, BE CERTAIN TO ALLOW FOR THE LENGTH OF THE VIBRATION RAILS WHEN DETERMINING LENGTH OF SUPPORTING STEEL. VIBRATION RAIL LENGTH AND MOUNTING HOLE LOCATIONS MAY DIFFER FROM THOSE OF THE UNIT. REFER TO VIBRATION ISOLATOR DRAWINGS FOR THIS DATA.
6. DO NOT USE THIS DRAWING TO SIZE POINT VIBRATION ISOLATORS. SEE YOUR BAC REPRESENTATIVE FOR DETAILS.



B.A.C.
ORDER NO:
DATE:



BALTIMORE AIRCOIL
COMPANY

SERIES 1500, FLUID COOLER
STANDARD STEEL SUPPORT

DRAWING NUMBER:
BAC-17153A

A