

2001 Carrier 30GXN Air Cooled Chiller - 225 Tons

Mfg: Carrier

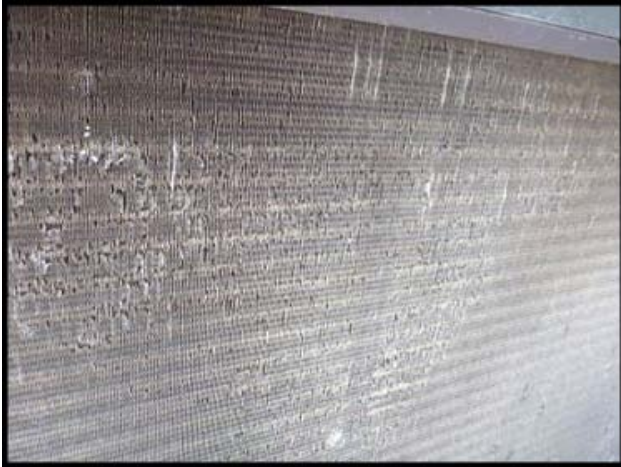
Model: 30GXN225-A-640PT

Stock No: CPEG701.65

Serial No: 1201F71102

2001 Carrier Air Cooled Chiller - 225 Tons. Model: 30GXN225-A-640PT. S/N: 1201F71102. Unit currently has 3 Compressors installed (A1, A2, B1). Compressors A1/B1 are Carlyle model 06NA2250S7EA-A00, Mfg. NCBUHA6001, S/N 1101J09251 and 1001J09127, 460V 185.3 Rla (motors are rated for both 50Hz and 60Hz). Compressor A2 is Carlyle model 06NA2146S7EA-A00, Mfg. NCEQHA6001, S/N: 1001J09251, 460V 103.4 Rla (motors are rated for both 50Hz and 60Hz). Condenser has 10 fan motors, each 1.9 HP, 460 V, 60 Hz, 3.2 Fla, 3-phase. Chiller barrel model 10HX400156, s/n 0901X09340, nat'l bd. 40785, shell side rating: WP 220 PSI at 150 F, MDMT -20 F at 220 PSI, test pressure 242 PSI. (2) Henry Technologies accumulators, year 2001, part S-4618, CRN 5550.7C, MAWP 220 PSI at 650 F, MPMT -20 F at 220 PSI. (2) Henry Technologies horizontal oil separators, part S-5464A, ASME, Carrier model 30GX503661, 2.125 in. ODS, 375 PSig Max WP. Electrical requirement: 460 V, 3-phase, 60 Hz. Min circuit amps 458.3 / max over-current protection device amps 600. Control power requirements: 115 V, 1-phase, 60 Hz, 30 Amps. Overall dimensions: 233 in. L x 89 in. W x 89 in. H.





1945
26
CAN/ULC 609 C22.2 NO. 238

Carrier
A United Technologies Company

366N225-A-614P1
1201F71102

Carrier

MODEL 366N225-A-614P1 SERIAL 1201F71102 FACTORY CHARGED

COMP	QTY	VOLTS AC	PH	HZ	FLA	RLA	DISPLACEMENT (LBS)	DISPLACEMENT (KG)
COMP 1	1	460	3	60	531.3	1175	285	129.1
COMP 2	1	460	3	60	85.7	185	187	84.9

DESIGN / TEST PRESSURE GADE HIGH PSI 350 kPa 241.3 LOW PSI 220 MPa 151.7

FAN MOTORS QTY	VOLTS AC	PH	HZ	FLA	RLA	MIN CIRCUIT AMPS	MAX DISPLACEMENT (LBS)	MAX DISPLACEMENT (KG)
OUTDOOR 5	460	3	60	2.2	1.9			
OUTDOOR 4	460	3	60	3.2	2.9			

OTHER HEATERS

COPY DISPLACEMENT 460 VOLTS 3 PH 60 HZ MIN CIRCUIT AMPS 458.3 MAX DISPLACEMENT (LBS) 600 MAX DISPLACEMENT (KG) 271.8

DESIGN PRESSURE 504 MAX 414 MIN 11.1

CONTROLS Carrier 115 volts 1 line 60 Hz 30 amp 2.7

MADE IN U.S.A. TYP CHANGE SYSTEM PER INDUSTRY STANDARDS

Carlyle MODEL NUMBER MADE IN U.S.A.
06NA2250S7EA-A00

DISPLACE 425 M³/HR
MOTOR RPM 2900/3500

MFG/N NCBUHA6001 MTR (06N) CU23H74

VOLTS	PH	HZ	VOLTS (MIN/MAX)	RLA	LRA (Y/D)	kW
400	3	50	342/456	178.8	387/1226	90
460	3	60	396/528	185.3	371/1175	93

BURST (MPa): HI 17.2 LO 6.8 R134a
PROOF TP/AP (MPa): HI 3.2/2.1 LO 3.2/2.1
MOP/DP (MPa): HI 2.0/2.0 LO 0.45/1.2

S/N 1101J09251

CE

LOCAL 527

Carlyle MODEL NUMBER MADE IN U.S.A.
06NA2250S7EA-A00

DISPLACE 425 M³/HR
MOTOR RPM 2900/3500

MFG/N NCBUHA6001 MTR (06N) CU23H74

VOLTS	PH	HZ	VOLTS (MIN/MAX)	RLA	LRA (Y/D)	kW
400	3	50	342/456	178.8	387/1226	90
460	3	60	396/528	185.3	371/1175	90

BURST (MPa): HI 17.2 LO 6.8 R134a
PROOF TP/AP (MPa): HI 3.2/2.1 LO 3.2/2.1
MOP/DP (MPa): HI 2.0/2.0 LO 0.45/1.2

S/N 1001J09127

CE

LOCAL 527

Carlyle MODEL NUMBER MADE IN U.S.A.
06NA2146S7EA-A00

DISPLACE 248 M³/HR
MOTOR RPM 2900/3500

MFG/N NCEQHA6001 MTR (06N) CQ23H74

VOLTS	PH	HZ	VOLTS (MIN/MAX)	RLA	LRA (Y/D)	kW
400	3	50	342/456	101.7	226/715	63
460	3	60	396/528	103.4	216/685	63

BURST (MPa): HI 17.2 LO 6.8 R134a
PROOF TP/AP (MPa): HI 3.2/2.1 LO 3.2/2.1
MOP/DP (MPa): HI 2.0/2.0 LO 0.45/1.2

S/N 1001J09251

CE

LOCAL 527

S-5464A
ASME Horizontal
Oil Separator
Carrier #30GK503861
2-1/8" ODS
375 PSIG Max. W.P. (2589 kPa)
R1/2 R22, R134a, R404a, R502, R507

CONFORMS TO ANSI B16.207 OR
ASME CODE SECTION VIII

231553 MADE IN USA 0110

SERIAL NO 752734
CERTIFIED BY
HENRY TECHNOLOGIES
C&R COMPONENTS CHATHAM
W RES
MA WBS 220 S AT 220
MDM 20E AT 220
YEAR BUILT 2001
PART NO S-4618
CSN 5550.70

NATIONAL BOARD U-1
CERTIFIED BY
CARRIER
MEXICO

MAX. ALLOWABLE WORKING PRESSURE SHELL SIDE

220 PSI	AT 150 °F
1517 kPa	AT 165.5 °C

MIN. DESIGN METAL TEMP

-20 °F	AT 220 PSI
-29 °C	AT 1517 kPa

YEAR BUILT 2001

MODEL 10HX400156 STATE OR C.R.N.

TUBE SIDE EXEMPT PER U-1 (C)(2)(7)

PNEUMATIC TEST PRESSURE 1660 KPa

MADE IN MEXICO