

## Frick RXB-24 Screw Compressor Package - 75 HP

Mfg: Frick

Model: RXB-24

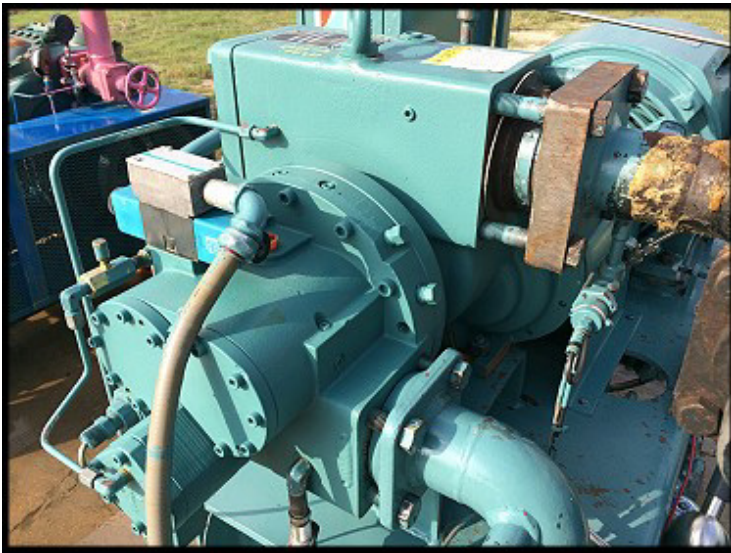
Stock No.: CPMT02

Serial No.: S0175LFMNLHAA3

Frick Rotary Screw Compressor Unit Package. Model: RXB-24. Serial: S0175LFMNLHAA3. Sales order 264133-01. Refrigerant: R717. Compressor model XJS120S. Compressor serial: 10240A92382077. Toshiba motor: 75 HP, 1775 RPM, 208-230/460V, 195-178/89 amps, 60 Hz, 3-phase, 365T frame. Frick oil compressor MAWP 300 PSI, year 1992. Frick RXB Plus micro controller. Run time: 99,269 hrs.







R506, R506B, R600, R600A, R/17, R728, R729, R744, R1150, AMMONIA, NATURAL GAS

**Frick**  
BY JOHNSON CONTROLS

ROTARY SCREW COMPRESSOR

MODEL NO. **AJS120S**

SERIAL NO. **10240A92382077**

MAX. ALLOWABLE PRESSURE - PSIG	MAX. DRIVER SPEED - RPM
<b>400</b>	<b>3600</b>

WAYNESBORO, PA 17268

**Frick**  
ROTARY SCREW COMPRESSOR UNIT

UNIT MODEL NO. **AXS 24**

UNIT SER. NO. **50175LEPNLH13**

FRICK SALES ORD. **26413201**

REFRIGERANT **R717**

MAX. SPEED RPM **1800**

MAX. DESIGN PRESSURE PSIG **300**

kPa

WAYNESBORO, PA 17268

**USE ONLY FRICK OIL TO PREVENT**

**PREMIUM EFFICIENCY MOTOR**  
THREE PHASE INDUCTION MOTOR

MODEL NO. **B0754VLF303H** SMD, DP

TYPE	TKKH	WGT.	230/460	50	
HP	7.5	FORM	V3K1	PPM	1775
POLES	4	FLR	3651	AMP	178/89
INS. CLASS.	F	DUTY	CONT.	SER. NO.	92506536
TEMP. PER.	B	MAX. AMB.	40 °C	INS. CL.	6314
TEMP. CODE	G	NOM. EFF.	95.4	INS. CL.	6313
SP.	1.15	MIN. EFF.	95.0	PF	83.0
		USABLOC 208V REPAIR KIT	195	AMP.	

TOYOTA INDUSTRIAL EQUIPMENT CO. LTD. YOKOHAMA, JAPAN

DATE L. NO. **103351**

FRICK COMPANY

WAYNESBORO, PA 17268

AT 200

WORK PRESSURE

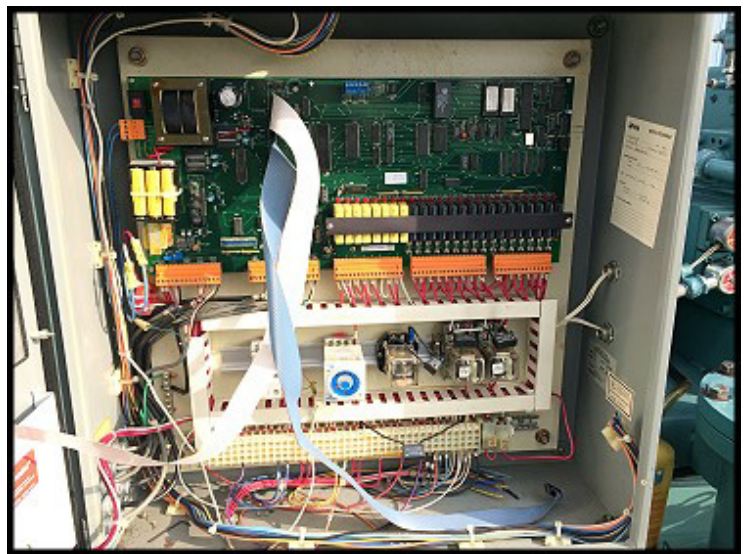
AT 10.2 BAR

MIN. METAL THICKNESS

**103351**

**31214**





**Frick** MICRO PROGRAM

S.O. 264133 ITEM 01  
DATE 9-2-92 REFRIGERANT R717  
PROGRAM I.D. RXB-DP-717

COMPRESSOR MODEL:  
PWR2 \_\_\_\_\_ RDB \_\_\_\_\_ RXB 24 RXF \_\_\_\_\_  
OTHER \_\_\_\_\_

DUTY: HIGH STAGE  BOOSTER \_\_\_\_\_ SWING \_\_\_\_\_

OIL PUMP:  
PFC LIBE \_\_\_\_\_ FULL-TIME \_\_\_\_\_  
CYCLING \_\_\_\_\_ NO PUMP

SPECIAL PROGRAMMING:  
\_\_\_\_\_  
\_\_\_\_\_  
\_\_\_\_\_