

## York Water-Cooled Liquid Chiller

Mfg: York

Model: LCHWC5-25

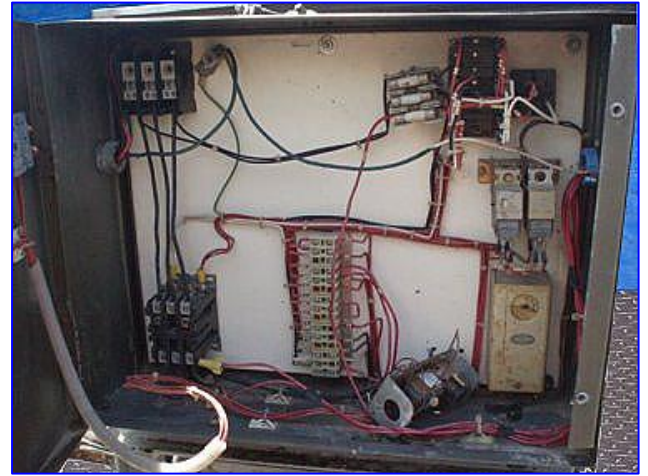
Stock No. 37a.DBHK210.a

Serial No. 110651-032089

York Water-Cooled Liquid Chiller. Model: LCHWC5-25. S/N: 110651-032089. Refrigerant: R-22. Test pressure (hi/lo): 450/300 psig. Power supply: 208/460 V, 3 phase, 60 Hz. Scroll Compressor, S/N: ET89B17727H, power supply: 208/230V, 21.4 RLA, 115 LRA, 60 Hz, 3 phase, min. ckt ampacity: 27 amps, max. dual element fuse: 45 amps. Control power supply: 120 V, 60 Hz, single phase. Oil heater: 120 V, 60 Hz, single phase. York Chiller Barrel, Model: CDR00621A2L, S/N: HBC-3820-10-88, refrigerant: R-12, R-22, R-502, shell side maximum design pressure: 406 psig, tube side maximum design pressure: 300 psig. Inlets/outlets: (4) 1-1/2 in dia. ports. Overall dimensions: 66 in. L x 26 in. W x 38 in. H







**YORK**  
**LIQUID CHILLER MODEL** \_\_\_\_\_  
 REFRIGERANT - 32 FACTORY TEST PRESS. \_\_\_\_\_ PSIG HIGH SIDE \_\_\_\_\_ PSIG LOW SIDE  
 VOLTS-PHASE-HZ \_\_\_\_\_ VOLTAGE LIMITS MIN \_\_\_\_\_ MAX \_\_\_\_\_

SERIAL ORDER NO. \_\_\_\_\_

USE \_\_\_\_\_

	SYSTEM 1			SYSTEM 2					
FACTORY REFRIGERANT CHARGE	NO	RLA	LRA	NO	RLA	LRA			
MIN CIRCUIT AMPACITY									
MAX DUAL ELEMENT FUSE SIZE									
COMPRESSOR	NO	HP	FLA	LRA	NO	HP	FLA	LRA	
CONDENSER FANS									
UNIT CONTROL SUPPLY	VOLTS-PHASE-HZ _____			MIN CIRCUIT AMPACITY _____			CONTROL POWER AMPS _____		
	VOLTS-PHASE-HZ _____			MAX DUAL ELEMENT FUSE SIZE _____			POWER AMPS _____		
LOADS	NO	VOLTS-PHASE-HZ _____		WATTS _____		(440V) _____		WATTS MAX. _____	
OIL HEATER									
COOLER HEATER									
FIELD CHILLER LIQ. LINE HEATER									

52-1204  
 REV. 2

**YORK INTERNATIONAL CORPORATION**  
 YORK, PA. 17405