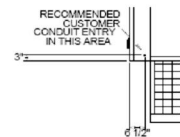
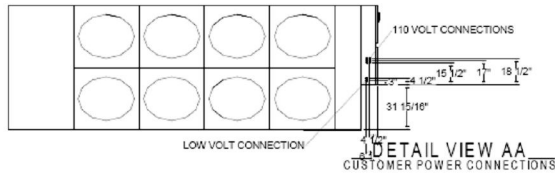
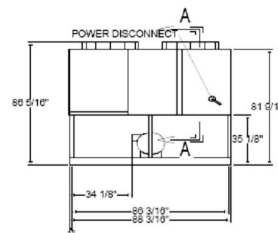
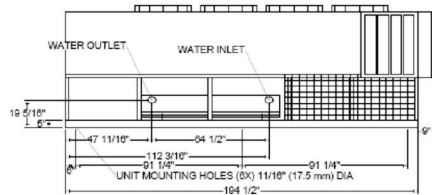


| | |
|--------------------------------|-------|
| WATER CONNECTION PIPE DIAMETER | 4" in |
|--------------------------------|-------|

- NOTES:
1. CUSTOMER WATER CONNECTIONS STD GROOVED PIPE COUPLINGS
 2. ADD 2" (51mm) TO OVERALL WIDTH FOR COIL PROTECTION.



VIEW _____

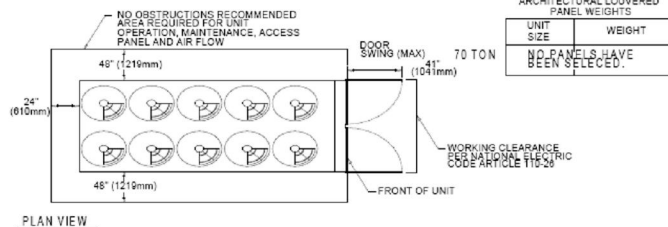


FRONT VIEW

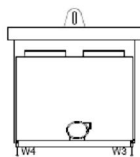
1

| UNIT SIZE | LIFTING WEIGHTS | | | | TOTAL WEIGHTS |
|-----------|-----------------|----------|----|----|---------------|
| | W1 | W2 | W3 | W4 | |
| 1987.0 lb | 1626.0 lb | 580.0 lb | | | |

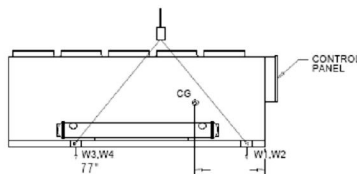
- NOTES:
1. LIFTING CHAINS (CABLES) WILL NOT BE THE SAME LENGTH. ADJUST TO KEEP UNIT LEVEL WHILE LIFTING.
 2. DO NOT FORK LIFT UNIT.
 3. WEIGHTS ARE TYPICAL FOR UNITS WITH R-22 CHARGE.
 4. SEE CHART FOR ARCHITECTURAL LOUVERED PANEL WEIGHTS. DEDUCT THIS AMOUNT FOR UNITS WITH THIS OPTION.



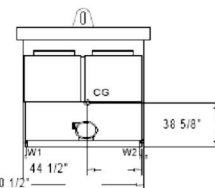
PLAN VIEW



FRONT VIEW



RIGHT END VIEW



Unit Dimensions - Air-Cooled Helical Rotary Water Chillers (Small Tonnage)
Item: A1 Qty: 1

Weight, Clearance & Rigging Diagram - Air-Cooled Helical Rotary Water Chillers (Small Tonnage)
Item: A1 Qty: 1

