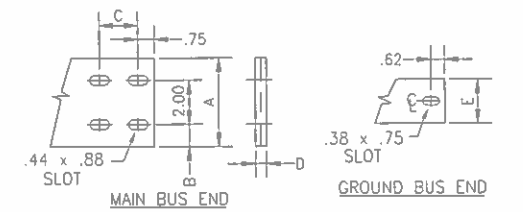
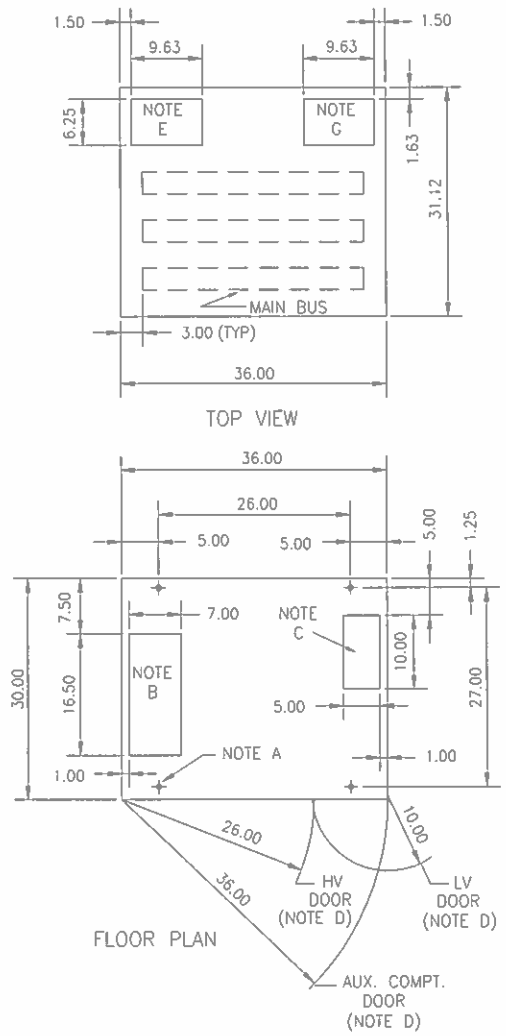
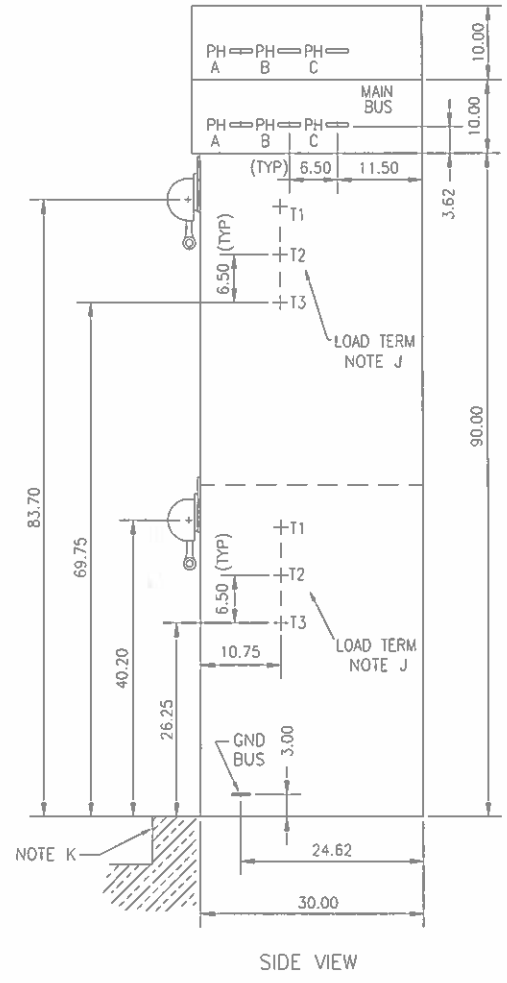
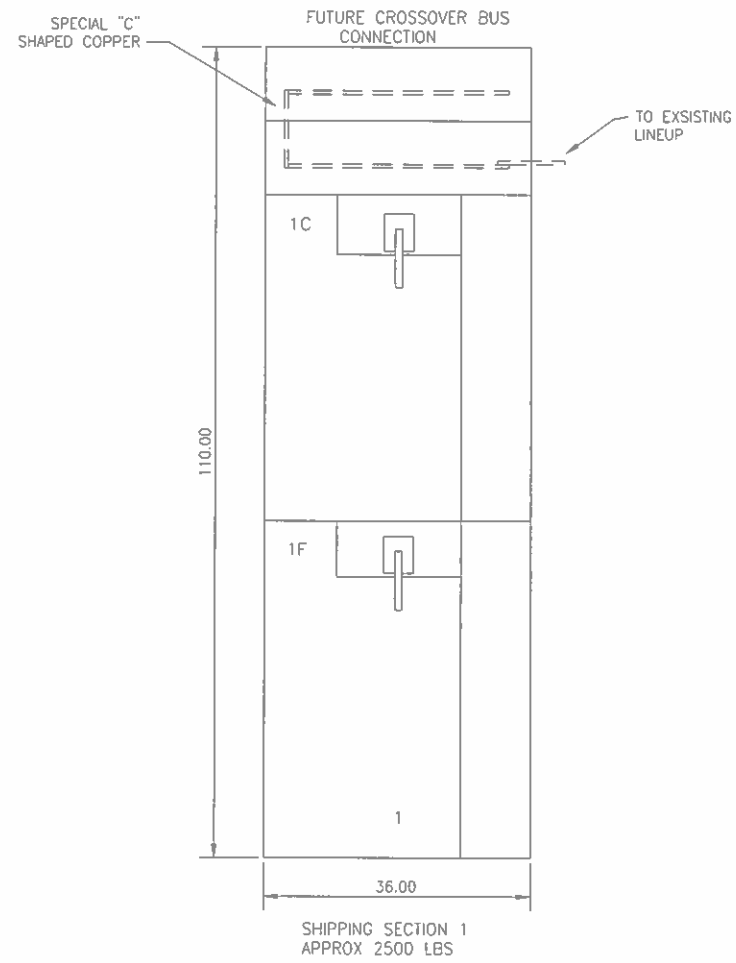


UNIT NP	NPL TEXT	CATALOG NUMBER	HP/KVA S.F.	FLA LRC	MAIN FUSE	CT RATIO	OVRLD	CABLE ENTRY		REFERENCE DRAWINGS
								LINE	LOAD	
1C	FULL VOLTAGE MOTOR STARTER #1	S210SBE	500 1.00	79.9	170-6R	100/5	G3i	BUS	TOP	98-TA488S10 98-TA488W10>W30
1F	FULL VOLTAGE MOTOR STARTER #2	S210SBE	500 1.00	79.9	170-6R	100/5	G3i	BUS	TOP	98-TA488S10 98-TA488W10>W30

STANDARD OUTLINE NOTES:
 1 THIS EQUIPMENT IS BUILT PER NEMA STANDARD ICS 2-324.
 2 **SPECIAL THIRD PARTY LABELING: NONE**
 3 INTERRUPTING RATING: 200MVA @2300V, 400MVA @4600V, 570MVA @6600V
 4 BIL RATING: 60KV
 5 THIS EQUIPMENT DESIGNED FOR FRONT ACCESS, MAY BE PLACED AGAINST WALL OR BACK TO BACK.
 6 **ENCLOSURE TYPE: NEMA 1**
 7 FINISH: ANSI 61 GRAY
 8 **MAIN BUS: 1200 AMPS .25 x 4.00 CU UNPLATED UNINSULATED.**
 9 GROUND BUS: .25 x 1.25 CU UNPLATED.
 10 AFTER INSTALLATION OF EQUIPMENT, AN ADEQUATE GROUND CONNECTION MUST BE MADE TO THE BUILDING GROUND GRID.
 11 HV TERMINALS: NONE
 12 ENGRAVED NP COLOR IS WHITE WITH BLACK LETTERS

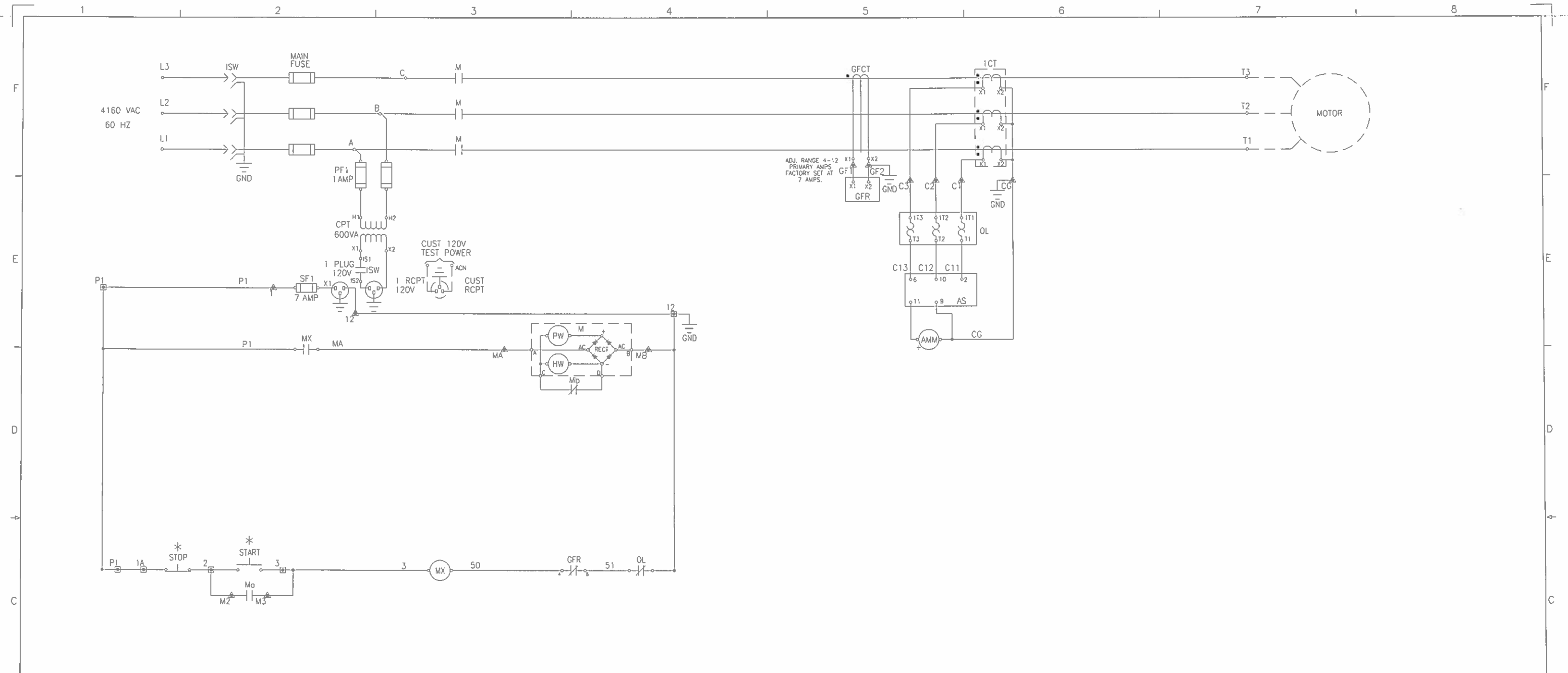
CABLE NOTES:
 1 LOAD CONNECTION IS DESIGNED FOR MAXIMUM OF ONE 350 MCM PER PHASE, WITH PREFABRICATED STRESS CONES (400A STARTER)
 2 LOAD CONNECTION IS DESIGNED FOR MAXIMUM OF ONE 750 MCM PER PHASE, WITH PREFABRICATED STRESS CONES (800A STARTER)
 3 LOAD CONNECTION IS DESIGNED FOR MAXIMUM OF ONE 350 MCM PER PHASE, WITH PREFABRICATED STRESS CONES.
 (ONE HIGH ADM FEEDER SWITCH)

DETAIL NOTES:
 A - .75 DIA. TYP. 4 HOLES.
 MOUNTING STUDS MUST EXTEND A MINIMUM OF 2.50" ABOVE GRADE.
 B - HV CONDUIT SPACE, LINE & LOAD. FOR TWO HIGH STARTERS, UPPER STARTER CABLE SHOULD ENTER IN REAR HALF OF CONDUIT SPACE & LOWER STARTER SHOULD ENTER IN FRONT HALF OF CONDUIT SPACE.(LINE CONNECTION W/O MAIN BUS)
 B1 - HV CONDUIT SPACE, (LINE WITHOUT MAIN BUS.)
 B2 - HV CONDUIT SPACE, (INCOMING LINE CONNECTION)
 C - LV CONDUIT SPACE. FOR TWO HIGH STARTERS CONTROL WIRING FOR UPPER STARTER SHOULD ENTER IN REAR HALF OF CONDUIT SPACE & LOWER STARTER CONTROL WIRING SHOULD ENTER IN FRONT HALF OF CONDUIT SPACE.
 D - DOOR DIM'S TO OPEN DOORS 90°
 AUX. COMPT. DOOR NOT APPLICABLE FOR TWO HIGH STARTERS.
 E - HV CONDUIT SPACE, LOAD.
 F - HV CONDUIT SPACE, LINE ONLY.
 G - LV CONDUIT SPACE ONLY
 H - FOR TOP ENTRY LOAD TERMINALS LOCATED 32.50" FROM BTM OF ENCL. FOR BTM ENTRY LOAD TERM'S LOCATED 18.00" FROM BTM OF ENCL.
 H1- FOR TOP ENTRY LOAD TERM'S LOCATED 76.00" FROM BTM OF ENCL. FOR BTM ENTRY 61.00" FROM BTM OF ENCL.
 H2- FOR TOP ENTRY LOAD TERM'S LOCATED 53.00" FROM BTM OF ENCL. FOR BTM ENTRY LOAD TERM'S LOCATED 40.50" FROM BTM OF ENCL.
 H3- FOR TOP ENTRY LOAD TERM'S LOCATED 62.50" FROM BTM OF ENCL. FOR BTM ENTRY LOAD TERM'S LOCATED 48.00" FROM BTM OF ENCL.
 H4- FOR TOP ENTRY LOAD TERM'S LOCATED 36.50" FROM BTM OF ENCL. FOR BTM ENTRY LOAD TERM'S LOCATED 43.50" FROM BTM OF ENCL.
 J - LOAD TERMINALS LOCATED ON LEFT HAND SIDE OF ENCLOSURE.
 J1 - LOAD TERMINALS LOCATED IN REDUCED VOLTAGE ENCLOSURE ON LH SIDE
 K - MAXIMUM SILL HEIGHT 6.00" & MAXIMUM SILL EXTENSION 3.00". FOR REMOVAL OF CONTACTOR W/O LIFTING DEVICE.
 L - LINE TERMINAL FOR TOP CABLE ENTRY
 M - LINE TERMINAL FOR BOTTOM CABLE ENTRY
 X - STEEL BOTTOM W/REMOVABLE LEAD PLATES
 Y - TOLERANCES -0.0" +.25" PER STRUCTURE
 Z - CONDUITS TO EXTEND A MAXIMUM OF 2" INTO STRUCTURE.

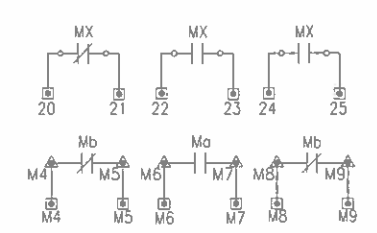


MAIN BUS END				GROUND BUS	
AMP RATING	A	B	C	D	AMP RATING .25 x E
1200 AMP	4.00	1.00	1.75	.25	300 AMP 1.25

THE INFORMATION ON THIS DOCUMENT WAS CREATED BY CUTLER HAMMER. IT WAS DISCLOSED IN CONFIDENCE AND IS ONLY TO BE USED FOR THE PURPOSE IN WHICH IT WAS SUPPLIED.				DFTR TOM FARR		DATE 11/30/98		Cutler-Hammer ASHEVILLE NC	
				REF. DWGS		CONT. FROM		TITLE TROPICANA PRODUCTS INC BRADENTON, FL 34208	
				REF. DWGS		CONT. TO		TYPE AMPGARD MEDIUM VOLTAGE CONTROL OUTLINE	
FEDERAL ID NO. 88725		PRODUCT CODE 0A		CUSTOMER PO S1121910		REVISION 01		DWG SIZE D	
				G.O. HTA88488-001		DWG 98-TA488010		SHEET 01	

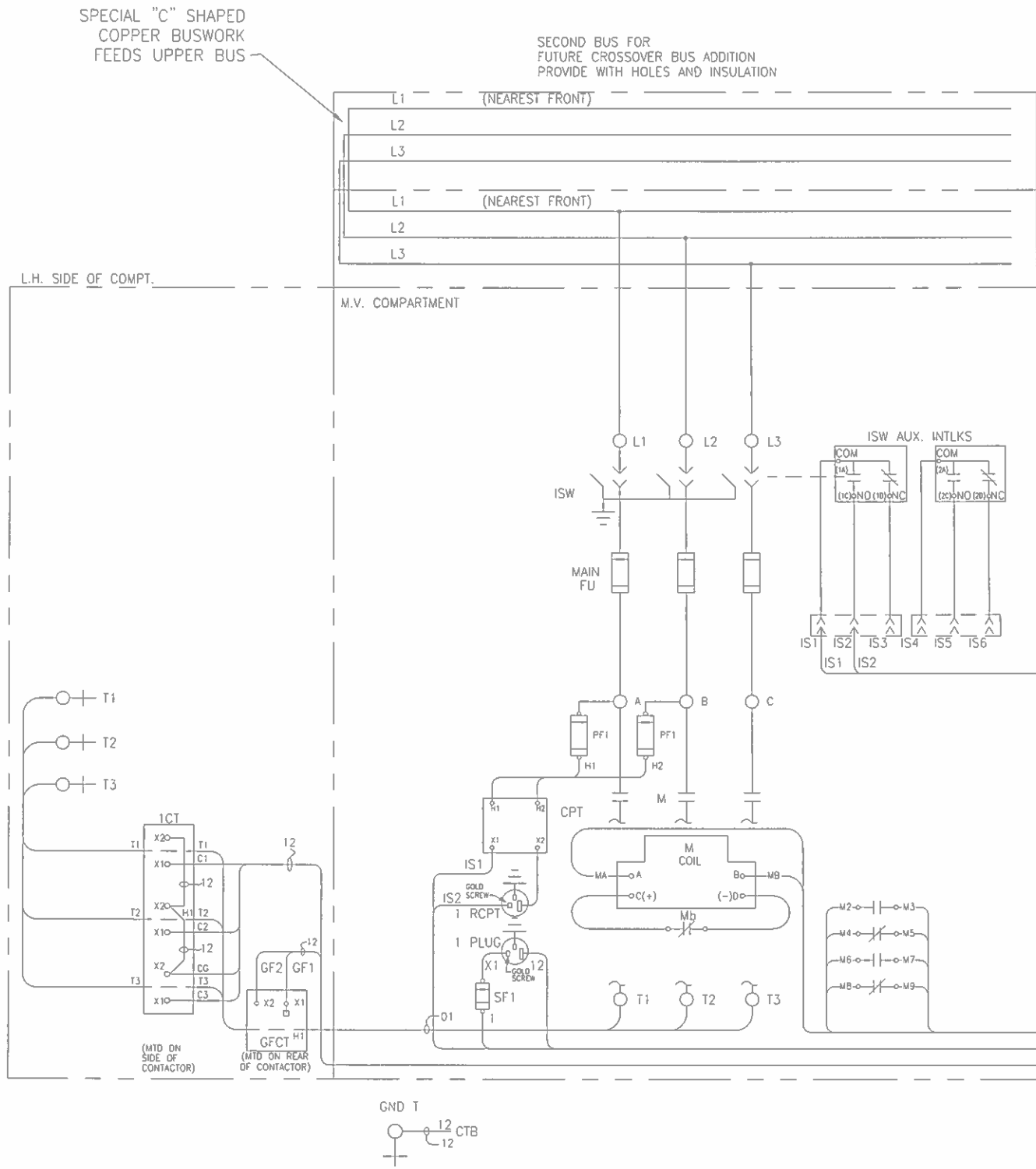


SPARE INTERLOCKS

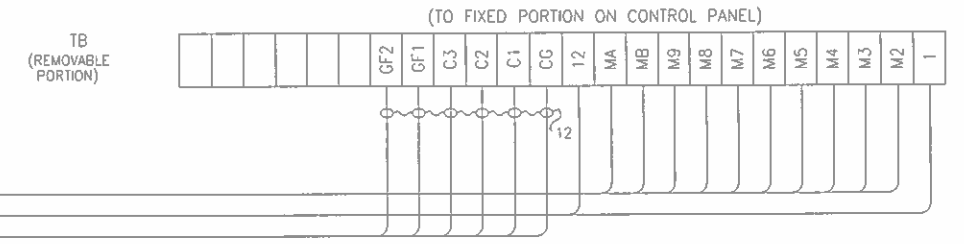


- * = REMOTE DEVICE
- ▲ = INTERNAL TERM. BLK(S)
- ⊗ = TERM. BLK. FOR CUSTOMER CONN.
- ⊗_{TX} = TX TYPE LIGHT

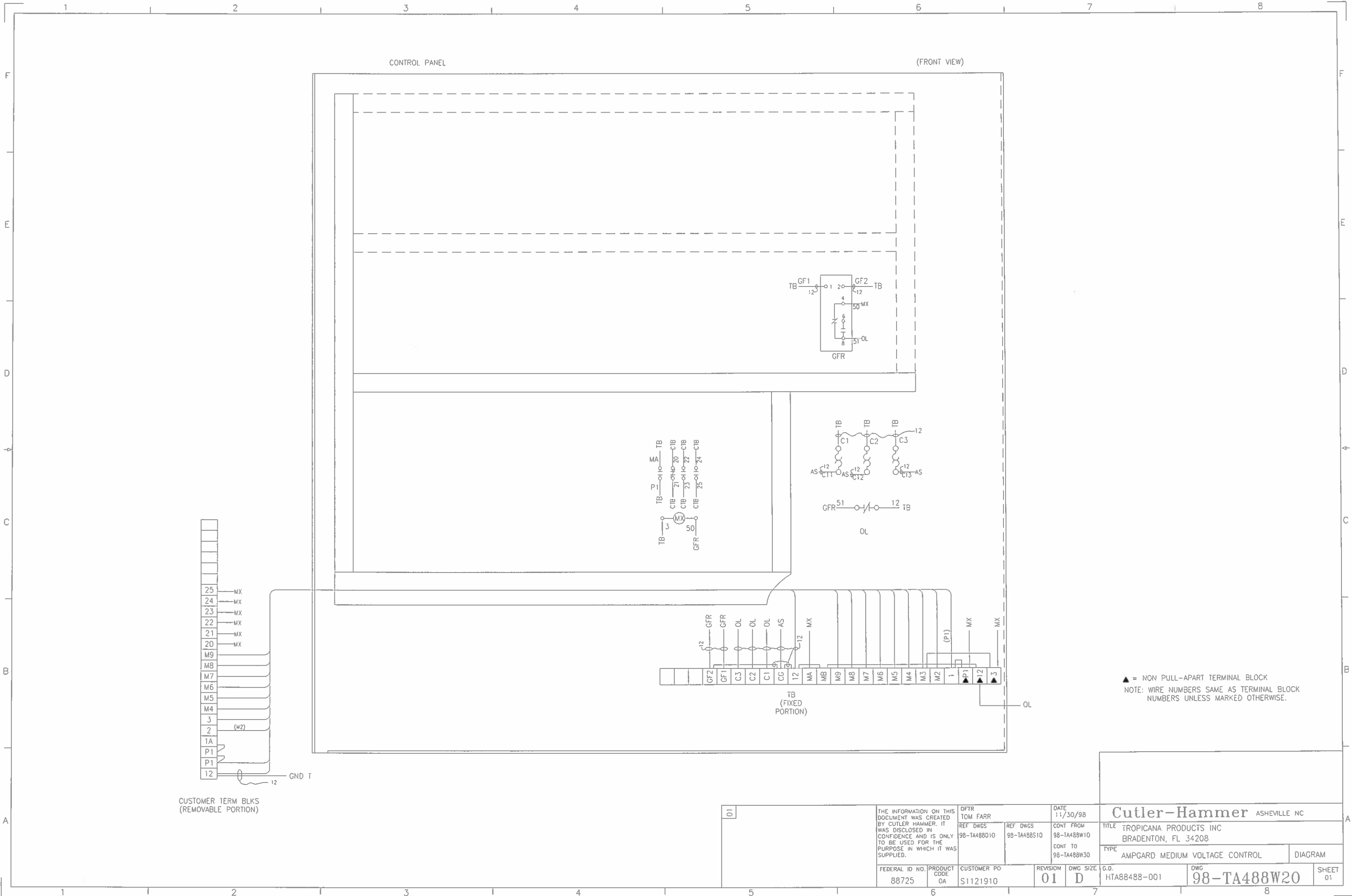
VACUUM TYPE FULL VOLTAGE 400A STARTER				DATE 11/30/98		Cutler-Hammer ASHEVILLE NC			
THE INFORMATION ON THIS DOCUMENT WAS CREATED BY CUTLER HAMMER. IT WAS DISCLOSED IN CONFIDENCE AND IS ONLY TO BE USED FOR THE PURPOSE IN WHICH IT WAS SUPPLIED.		DFTM TOM FARR		REF. DWGS 98-TA488010 98-TA488W10 98-TA488W30		CONT. FROM		TITLE TROPICANA PRODUCTS INC BRADENTON, FL 34208	
FEDERAL ID NO. 88725		PRODUCT CODE 0A		CUSTOMER PO S1121910		REVISION 01		DWG SIZE D	
G.O. HTA88488-001		DWC 98-TA488S10		SHEET 01					



5KV WIRE LIST		
WIRE MARKING UN-MARKED	GROUP	DESCRIPTION/SPECIFICATION
12	~~	#14 AWG: 41-.010 WIRE/62111H139P
	~~	#12 AWG: 65-.010 WIRE/62111H13BK
01	G01	#8 CABLE/62211JW36F (5KV) FLA 1-22
	G02	#4 CABLE/62211JW32B (5KV) FLA 22-81
	G03	1/0 CABLE/62211JW3AR (5KV) FLA 81-164
	G04,G05	4/0 CABLE/62211JW4HE (5KV) FLA 164-360
	G06	500MCM CABLE/62211JW3GL (5KV) FLA 360-720
02	~~	#14 AWG: 19-.0147 WIRE/62111DB4BR (15KV)
03	~~	#8 CABLE: 19-.0295/62211JW (5KV)
04	~~	#2 CABLE: 259-.016/62111JG (600V)
05	~~	3 COND. SHIELDED/62125DU3YS
06	~~	.
07	G01,G02	#8 CABLE/62211JW36F (5KV) FLA 1-81
	G03	#4 CABLE/62211JW32B (5KV) FLA 81-157
	G05	1/0 CABLE/62211JW3AR (5KV) FLA 157-281
	G04,G06	4/0 CABLE/62211JW4HE (5KV) FLA 281-620
08	~~	#8 AWG: 7-.0486 WIRE/62111HT4EZ (600V)
09	~~	2 COND. SHIELDED/2A95705G01
10	~~	#10 AWG: 105-.010 WIRE/62111HT3CP (600V)
13	~~	4 COND. SHIELDED/BELDON #8723
14	~~	#14 2 COND. TWISTED/62121AX3MF (600V)



10		THE INFORMATION ON THIS DOCUMENT WAS CREATED BY CUTLER HAMMER. IT WAS DISCLOSED IN CONFIDENCE AND IS ONLY TO BE USED FOR THE PURPOSE IN WHICH IT WAS SUPPLIED.		DFTR TOM FARR		DATE 11/30/98		Cutler-Hammer ASHEVILLE NC	
FEDERAL ID NO. 88725		PRODUCT CODE OA		CUSTOMER PO S1121910		REVISION 01		DWG SIZE D	
REF DWGS 98-TA488010		REF DWGS 98-TA48810		CONT. FROM		CONT. TO 98-TA488W20		TITLE TROPICANA PRODUCTS INC BRADENTON, FL 34208	
G.O. HTA88488-001		DWC 98-TA488W10		TYPE AMPGARD MEDIUM VOLTAGE CONTROL		DIAGRAM		SHEET 01	



▲ = NON PULL-APART TERMINAL BLOCK
 NOTE: WIRE NUMBERS SAME AS TERMINAL BLOCK NUMBERS UNLESS MARKED OTHERWISE.

01	THE INFORMATION ON THIS DOCUMENT WAS CREATED BY CUTLER HAMMER. IT WAS DISCLOSED IN CONFIDENCE AND IS ONLY TO BE USED FOR THE PURPOSE IN WHICH IT WAS SUPPLIED.			DFTR TOM FARR	DATE 11/30/98	Cutler-Hammer ASHEVILLE NC	
	REF DWGS 98-TA488010	REF DWGS 98-TA488S10	CONT FROM 98-TA488W10	CONT TO 98-TA488W30	TITLE TROPICANA PRODUCTS INC BRADENTON, FL 34208		DIAGRAM
	FEDERAL ID NO. 88725	PRODUCT CODE 0A	CUSTOMER PO S1121910	REVISION 01	DWG SIZE D	G.O. HTA88488-001	DWG 98-TA488W20

FIG. 1

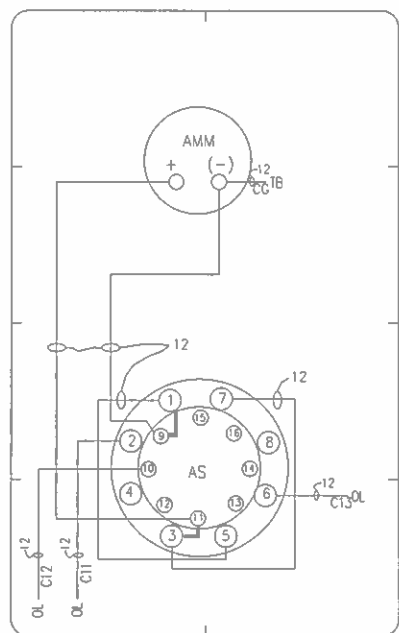


FIG. 2

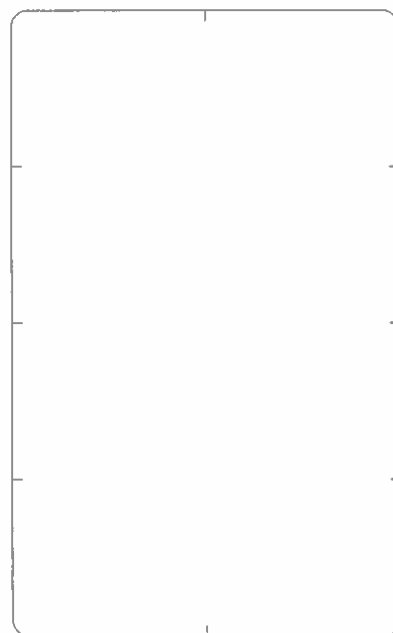
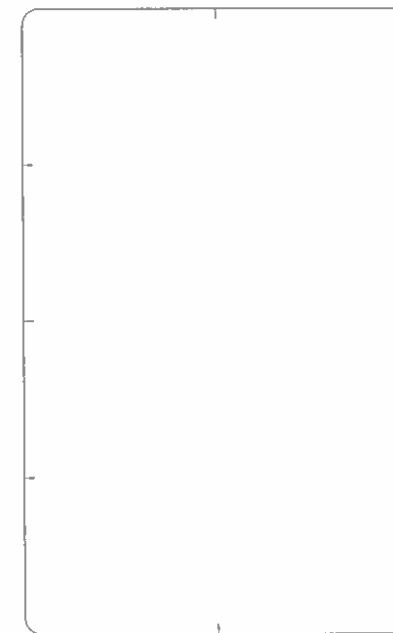
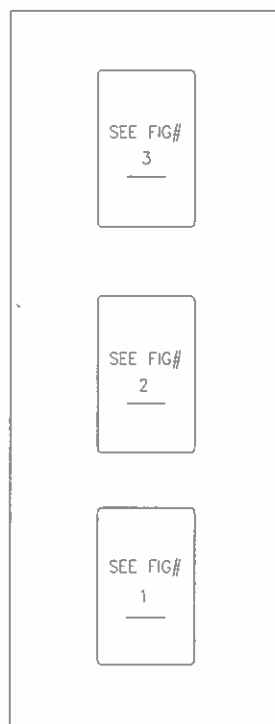


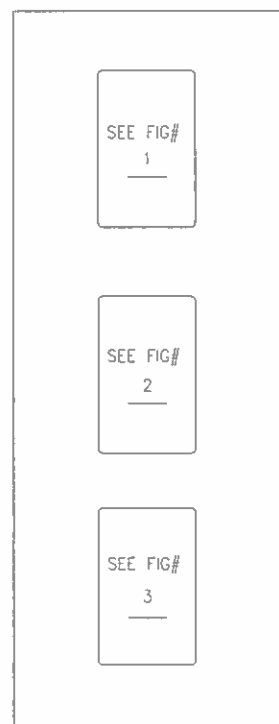
FIG. 3



UPPER COMPARTMENT
LOW VOLTAGE DOOR



LOWER COMPARTMENT
LOW VOLTAGE DOOR



DEVICE PANELS SHOWN REAR VIEW

5	THE INFORMATION ON THIS DOCUMENT WAS CREATED BY CUTLER HAMMER. IT WAS DISCLOSED IN CONFIDENCE AND IS ONLY TO BE USED FOR THE PURPOSE IN WHICH IT WAS SUPPLIED.			DFTR TOM FARR	DATE 11/30/98	Cutler-Hammer ASHEVILLE NC		
	REF DWGS 98-TA488010		REF DWGS 98-TA488S10	CONT FROM 98-TA488W20	TITLE TROPICANA PRODUCTS INC BRADENTON, FL 34208			DIAGRAM
	FEDERAL ID NO. 88725	PRODUCT CODE 0A	CUSTOMER PO S1121910	REVISION 01	DWG SIZE D	G.O. HTA88488-001	DWG 98-TA488W30	SHEET 01