

Westinghouse Ampgard Medium Voltage, 700 HP, 4160v Motor Starter Control Panel

Mfg: Westinghouse

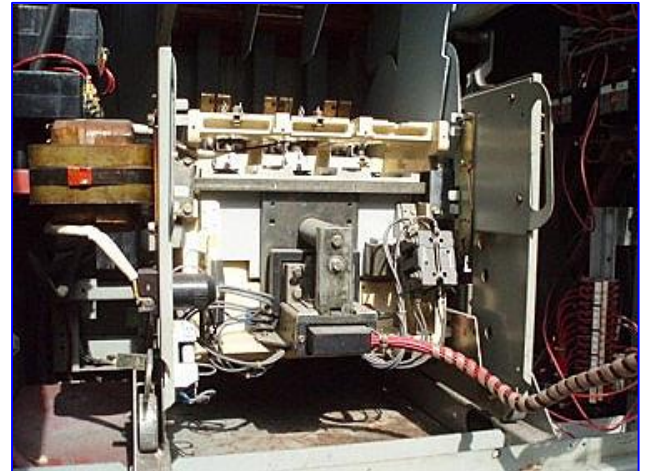
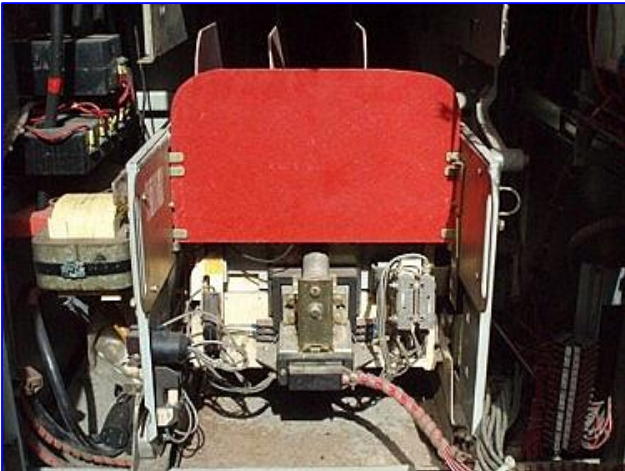
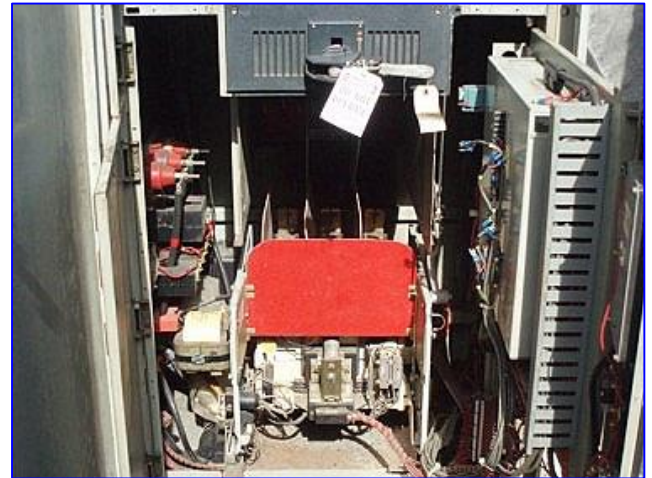
Model:

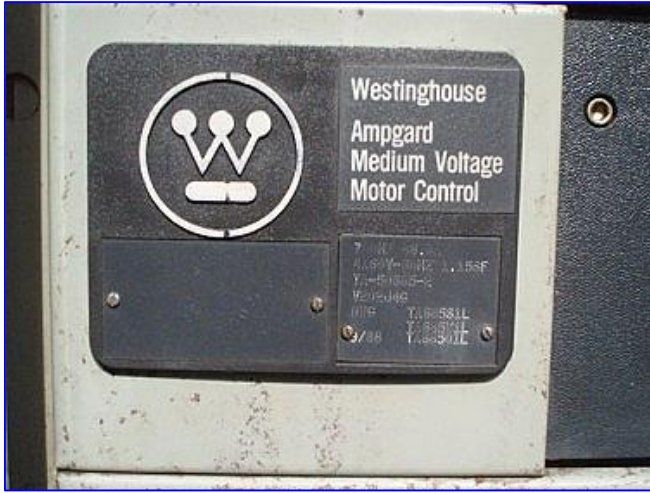
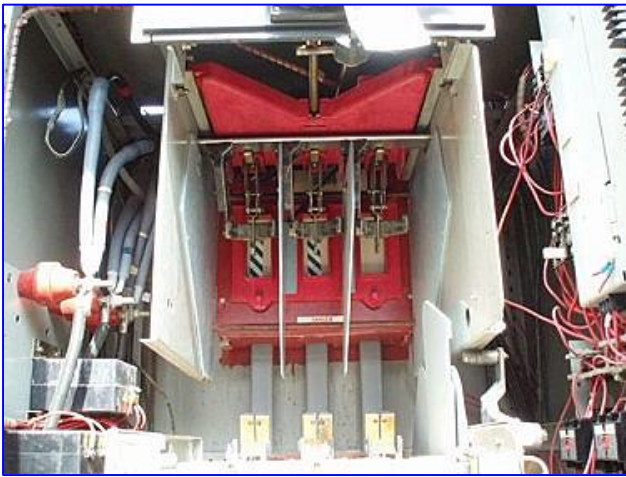
Stock No. DTTC032.

Serial No.:

Westinghouse Ampgard Medium Voltage Motor Starter Control Panel. Ref. No's: TA-50685-2 and V202J4G. Dwg: TA685 S1L, TA685 W1L, TA685 O1L. Power supply: 700 HP, 4160v, 86.3 amps, 60 Hz, 3 phase. Each Ampgard motor starter (controller) consists of one non load-break isolating switch, one or more Type SLS vacuum-break contactors, current-limiting fuses, a set of current transformers, and some form of overload protection. The controller is designed to start, stop and protect a three-phase medium-voltage motor or may also be used to switch transformer windings or other medium voltage loads. These controllers are configured for full-voltage applications. Westinghouse IQ-2000 Variable Frequency Inverter provides complete circuitry protection against abnormal operations such as overload, Inductive type loads, short-circuit, and AC Input Over-Voltage. Overall dimensions: 37 in. L x 37 in. W x 8 ft. 4 in. H.







switch handle is moved to "ON" position. Inset shows how end of double barreled fuse is inserted.

RENEWAL PARTS

Overload relay coils and current transformers are a coordinated protective system specially selected for your motor. To be sure of continuous protection only Westinghouse renewal parts should be used.

FOR THIS STARTER NO. TA-50315-2 (3F) USE ONLY THESE PARTS

DESCRIPTION	PART NO.	REQUIRED
MAIN CONTACTS (AIRBREAK)	2147A47G03	3 / CONTACTOR
BOTTLE SUB-ASSY. (VACUUM)	7866A20H03	3 / CONTACTOR
MAIN CONTACT SPRINGS		
MAIN COIL (120 V CONTROL)	2147A48G11	3 / CONTACTOR
CONTROL TRANSFORMER	6406D14G02	1 / STARTER
CONTROL PRIMARY FUSES	317B487H04	2 / STARTER

Positive interference type mechanical interlocks are used exclusively on this starter. They protect you by causing the mechanism to lock in the "OFF" position if an attempt is made to operate the starter while the motor is running. Refer to the instruction book before making changes or applying force. If this instruction sheet becomes soiled, refer to the instruction book for a replacement sheet. Do not force the mechanism to operate if it is not in the "OFF" position. Do not force the mechanism to operate if it is not in the "OFF" position.

ABRIDGED LIST OF RENEWAL PARTS

This motor starter provides improved motor protection. The main fuses, overload relay coils and current transformers are a coordinated protective system specially selected for your motor. To be sure of continuous protection only Westinghouse renewal parts should be used.

FOR THIS STARTER NO. TA-50315-2 (3F) USE ONLY THESE PARTS

DESCRIPTION	PART NO.	REQUIRED	DESCRIPTION
MAIN FUSES 1700ER AMP	3470597G06	3 / STARTER	MAIN CONTACTS (AIRBREAK)
OVERLOAD RELAY HEATERS	506578029	3 / STARTER	BOTTLE SUB-ASSY. (VACUUM)
CURRENT TRANSFORMERS	1917043H02	3 / STARTER	MAIN CONTACT SPRINGS
CURRENT TRANSFORMER RATIO	150/5		MAIN COIL (120 V CONTROL)
			CONTROL TRANSFORMER
			CONTROL PRIMARY FUSES

CONTROL DIVISION
WESTINGHOUSE ELECTRIC CORPORATION
PITTSBURGH, PA. 15224-0001

PROTECTIVE INTERLOCKING

Positive interference type mechanical interlocks are used exclusively on this starter. They protect you by causing the mechanism to lock in the "OFF" position if an attempt is made to operate the starter while the motor is running. Refer to the instruction book before making changes or applying force. If this instruction sheet becomes soiled, refer to the instruction book for a replacement sheet. Do not force the mechanism to operate if it is not in the "OFF" position. Do not force the mechanism to operate if it is not in the "OFF" position.

CAUTION ---- INSTALL 3 ARC BOXES AND 4 PHASE BARRIERS BEFORE OPERATING AIRBREAK CONTACTOR UNDER LOAD.

CAUTION ---- INSTALL 4 PHASE BARRIERS BEFORE OPERATING VACUUM CONTACTOR UNDER LOAD.