



BALTIMORE AIRCOIL COMPANY

POST OFFICE BOX 7322
BALTIMORE, MARYLAND 21227

OK

V SERIES INSPECTION RECORD

CUSTOMER THE STELLAR Group
SCHEDULE DATE 7-25-95
INSPECTED BY ACU
DATE 7-28-95
SERIAL NO. 95101034
GLV/AH/BBD GLV
MODEL V02-1504
SIZE 12X36 R.H.
TESTED YES NO
RELEASE NO. 30
PAN 30
CASING -
COIL 30
WELDER UNKNOWN
FAN MOTORS MFR. (4) U.S. TEFC w/wweep Holes
PHASE 3
RPM 1765
HZ 60

Table with columns: SERIAL NO., AMPS., HP, FRAME, VOLTS, AGE. Rows include motor serial numbers and specifications.

Table with columns: PUMPS, MODEL NO., SERIAL NO., MANUFACTURER, SIZE, IMP. DIA. Rows include pump models like 300.563 and 300.563.

PUMP MTRS MFG. U.S. TEFC
DRIP COVERS -
HP 5
VOLTS 208-230/460
PHASE 3
HZ 60
RPM 1745
FRAME 1845M
SERIAL NOS. X12X255R300F
AND X11X252R202M

FLOAT SIZE AND ASSY. 2-2"
MFR. GADREN'S
FLOAT BALL 2-8" PLASTIC
SHEAVES: MFR. ELECTRON
DRIVER 2-3502XSD150"
DRIVEN 4-28184 X SK 1 1/2"
2-30184 X SK 1 1/2"

BELTS TYPE AND SIZE 2-2B150
4-3B150
BRG TYPE AND NO. YELLOW BLOCK (12)
BEARING MFR. VAX-PAPAIN
BLEEDLINE SIZE 2-1 1/4" CLEAR
MAKE UP CONN SIZE/TYP 3" UMP
SUCTION SIZE/TYP 2-6" CONNS.

PROP. MFR. (12) BAILS CO.
6L (6) BAILS
SERIAL NO. 25-230
25-231
PROP/VANE CLEARANCE 1/4"
STRAINER LENGTH 4-58" w/HOOPS
CASING NO. SURF. NO. SPRAY 2 w/6" CONNS
PLENUMS 2-ON PAN
CASING HEIGHT 72 1/4"
NOZZLE TYPE AND SIZE 360° PLASTIC (160)
SURFACE TYPE -
HEADER MATERIAL PVC

(2) COILS GAGE "D"
ROWS 12
VENT -
IN CONN. SIZE 4-4" IPS BEV
OUT CONN. SIZE 4-4" IPS BEV
HEATERS SERIAL NO. KW VOLTS PHASE T'STAT MODEL # BULB WELL LO-LEVEL CUTOUT MODEL NO.

FAN DAMPERS ACTUATOR MODEL NO. XFORMER VOLTS/AMPS TEMP/PRESS CONTROLLER MODEL NO. PROBE
ELEC WATER LEVEL MODEL NO. SERIAL NO. SOLENOID SIZE

INTAKE ATTEN. DISCHARGE ATTEN. DISCHARGE HOOD POS. CLSR. DAMPERS ACTUATOR MODEL NO.
LADDER SAFETY CAGE RAILING SOLID BTM BTM SCREENS EXT. LUBE LINE

ITEMS NOT INSTALLED:
1- BOX OF SLIP ON FITTINGS LOOSE w/ UNIT
2- 6" HOSES w/ CLAMPS LOOSE w/ UNIT

MECH: PAN CAS COILS HOOD INTAKE ATTEN. DISCHARGE ATTEN. CONNECTION TESTER

REMARKS: INSTALLED Toe-Boards + Railing Brackets on COILS
INSTALLED PARTITIONS between PAN, Plenum + COILS
FINAL INSPECTION
SHORT PARTS; REWORK
INSPECTOR VERIFIED

SHIPPING METHOD CODE
DESIGNATOR DESCRIPTION
A. FULLY ASSEMBLED
B. MOTOR(S) WITH PAN(S), CASING(S) OFF WITH PLENUM(S) UNDER CASING
C. SURFACE ON PAN, ELIMINATOR(S) IN PKGS.
OTHER
MOTOR(S) IN PLACE 4-OK
MOTOR(S) AS SEPARATE PKGS.
ISOLATION RAILS YES NO
EXPORT CREAT. YES NO
NOTE: REFER TO RIGGING INSTRUCTIONS ON PAN DOOR FOR LOCATION OF LOOSE ITEMS.
PKGS. 3 TAGS 3 DATE 7/31/95

**BALTIMORE AIR OIL**One of the
Amsted Industries**SUBMITTAL DATA FORM**

C U S T O M E R	THE STELLAR GROUP 2900 HARTLEY ROAD JACKSONVILLE, FL 32257	DATE P.O. NO. B.A.C. NO. MODEL NO.	7/11/95 98932401 95101034 VC2-1504
--------------------------------------	--	---	---

PROJECT:	TROPICANA PRODUCTS - BRANDENTON, FL
ENGINEER:	THE STELLAR GROUP - JACKSONVILLE, FL
B.A.C. REP:	SHAVER SALES & SERVICE, INC. - JACKSONVILLE, FL

EVAPORATIVE CONDENSER

CERTIFIED CAPACITY: 13732 MBH, R-707 REFRIGERANT, AT 95 F CONDENSING TEMPERATURE AND 80 F ENTERING WET BULB.

FAN MOTOR(S): (2) 15 & (2) 25 HP, 1800 RPM, 3 PHASE, 60 HERTZ, 230/460 SUIT 480 VOLTS, STANDARD TEFC ENCLOSURE. FAN DRIVES BASED ON 0 " ESP.

PUMP MOTOR(S): (2) 5 HP, 1750 RPM, 3 PHASE, 60 HERTZ, 230/460 SUIT 480 VOLTS, TEFC ENCLOSURE.

NOTE: Two speed fan motors and Energy Miser Fan Systems require a starter that incorporates a 15 second time delay when switching from high to low speed.

10 COPIES OF SUBMITTAL DATA FOR RECORD

FEATURE	FEATURE
EXTENDED LUBRICATION LINES	
GALVANIZED STEEL ELIMINATORS	
DUAL FLOAT VALVES	
HANDRAIL	

THANK YOU FOR YOUR ORDER ACCEPTED AT THE B.A.C. BALTIMORE, MD PLANT ON: JUNE 9, 1995.

AN APPROVED SUBMITTAL IS NOT REQUIRED. YOUR ORDER IS SCHEDULED TO SHIP FROM OUR FACTORY APPROXIMATELY 7/28/95. PLEASE BE PREPARED FOR THE ARRIVAL OF THIS EQUIPMENT, AS OUR FACILITIES CANNOT ACCOMMODATE THE STORAGE OF COMPLETED UNITS.

CC: T. J. GREENE COMPANY, INC. - CLEARWATER, FL

MECHANICAL SPECIFICATIONS

BALTIMORE AIRCOIL SERIES V EVAPORATIVE CONDENSERS

VC2 MULTI-STAGE AXIAL FAN MODELS

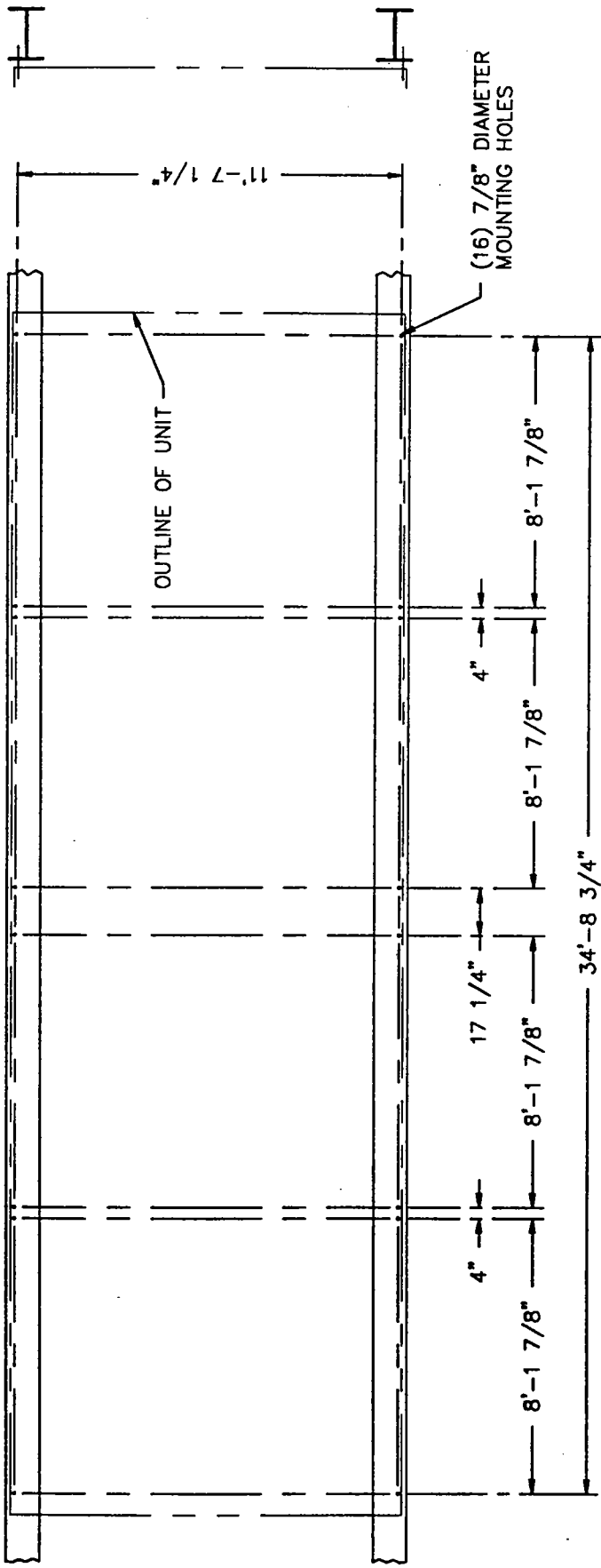
G210 Hot-Dip Galvanized Steel Construction

PROJECT: Tropicana Products - Bradenton, FL
CUSTOMER: The Stellar Group
CUSTOMER P.O. NUMBER: 98932401
B.A.C. SERIAL NUMBER: 9510134
ENGINEER: The Stellar Group

UNIT TYPE	Factory-assembled, counterflow, blow-through design evaporative condenser. All steel panels and structural members are constructed from G210 hot-dip galvanized steel. Edges are given a protective coat of zinc-rich compound. A low VOC acrylic latex finish is applied to the exterior of the unit after assembly.
PAN/FAN SECTION CONSTRUCTION	Heavy gauge panel construction of G210 hot-dip galvanized steel. Multi-stage, axial flow fans and motors are located in the dry entering airstream.
ACCESS	Circular access doors of hot-dip galvanized steel are held in place with phenolic knob screws.
MAKE-UP FLOAT ASSEMBLY	Bronze make-up valve with unsinkable polystyrene filled plastic float arranged for easy adjustment. The make-up valve is suitable for city water supply pressures between 15 and 50 psig.
BLEED-OFF	Waste water bleed line with adjustable valve provided.
PUMP	Close-coupled centrifugal pump with mechanical seal, fitted with a drain plug to allow complete drainage. T.E.F.C. motor suitable for outdoor operation provided with protective canopy.
STRAINER	Large area, lift out, hot-dip galvanized steel strainer screens have perforated openings sized smaller than the water distribution nozzle orifices. Strainer includes anti-vortexing baffle to prevent air entrainment.
FANS	Multi-stage, axial flow fans are heavy duty, fixed pitch, cast aluminum and are statically balanced.
FAN CYLINDERS	Fan cylinders, constructed from hot-dip galvanized steel, are designed for streamlined air entry and include intermediate guide vanes between the fans to maximize fan efficiency. The cylinders extend inside the pan to prevent water from splashing into the fans.
FAN SHAFT AND BEARINGS	Solid shaft of ground and polished steel. Exposed surface is coated with a rust preventative. Self-aligning, heavy-duty, grease-lubricated ball bearings with eccentric locking collars are provided on each end of the fan shaft.

MOTOR	T.E.F.C. ball bearing type with 1.15 service factor, suitable for outdoor service, is mounted on an adjustable motor base. Motor base is sheltered from the weather by either the location within the unit or a protective motor housing.
DRIVE	One-piece, multi-groove, banded belts with drives selected for 150% motor nameplate horsepower. Mounted and aligned at the factory.
FAN GUARD SCREENS	Hot-dip galvanized steel screens are provided.
HEAT TRANSFER SECTION CONSTRUCTION	Heavy gauge panel construction of G210 hot-dip galvanized steel. Heat transfer section is separable from pan/fan section.
CONDENSING COIL	Continuous 1.05" O.D. all prime surface steel encased in steel framework with entire assembly hot-dip galvanized after fabrication. Tubes sloped for liquid drainage. Tested to 350 psig air under water.
WATER DISTRIBUTION SYSTEM	Schedule 40 PVC spray header and branches. Removable branches and 360° spray pattern plastic nozzles are held in place with snap-in rubber grommets.
ELIMINATORS	Eliminators are constructed of G210 hot-dip galvanized steel and are removable in easily handled sections. They impart three distinct changes in air direction to effectively strip entrained moisture from the leaving airstream with minimum air resistance, and to direct discharge air away from fans.


[C2:9/91]

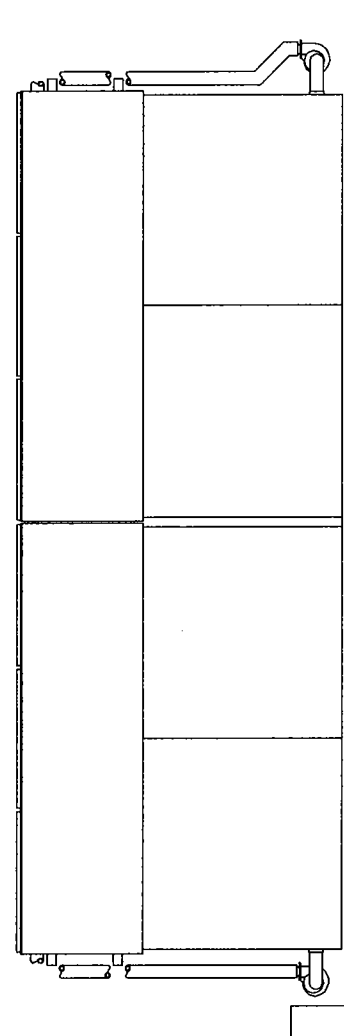
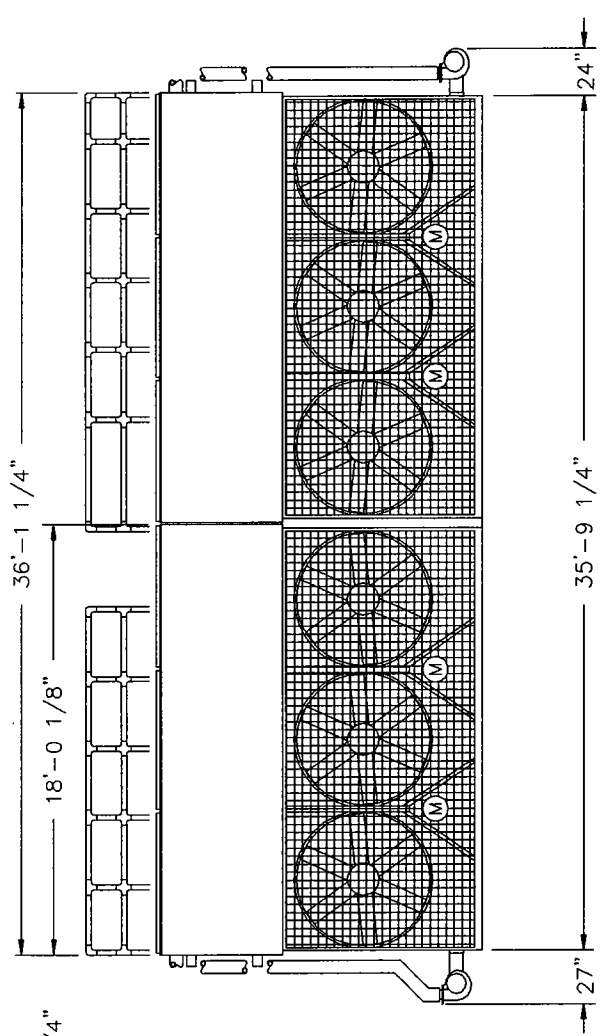
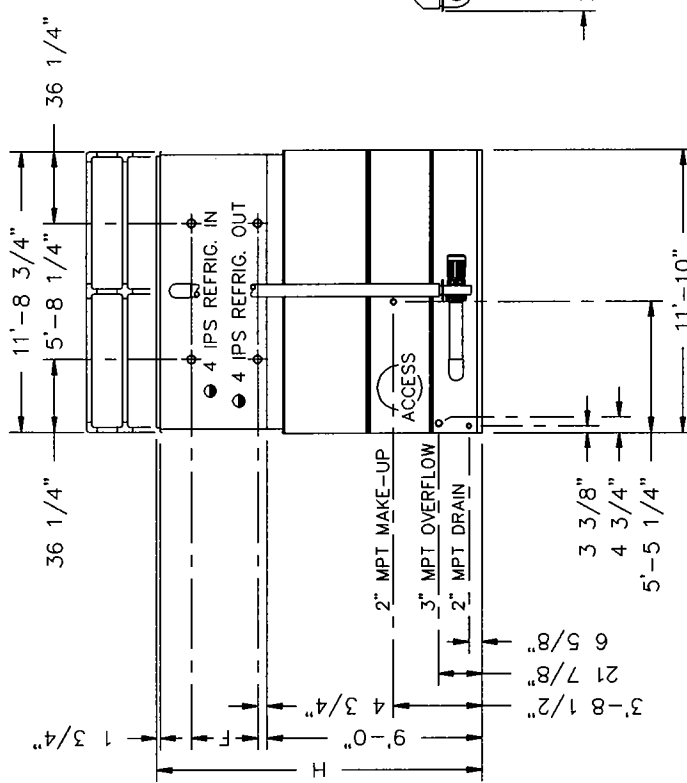


NOTES:

1. THE RECOMMENDED SUPPORT ARRANGEMENT FOR VC2 UNITS CONSISTS OF TWO PARALLEL I-BEAMS EXTENDING THE FULL LENGTH OF THE UNIT. SUPPORTS AND ANCHOR BOLTS ARE TO BE DESIGNED AND FURNISHED BY OTHERS.
2. ALL SUPPORTING BEAMS ARE TO BE FLUSH AND LEVEL AT TOP AND MUST BE ORIENTED RELATIVE TO GAGE LINE AS SHOWN.
3. RECOMMENDED DESIGN LOADS FOR EACH BEAM SHOULD BE 70% OF THE TOTAL UNIT OPERATING WEIGHT APPLIED AS A UNIFORM LOAD TO EACH BEAM. BEAMS SHOULD BE IN ACCORDANCE WITH STANDARD STRUCTURAL PRACTICE. THE MAXIMUM ALLOWABLE DEFLECTION OF BEAMS UNDER THE UNIT SHALL BE 1/2 OF AN INCH.
4. ALL MOUNTING HOLES ARE 7/8 INCH DIAMETER AT THE LOCATIONS SHOWN.
5. IF VIBRATION ISOLATORS ARE USED, A RAIL OR CHANNEL MUST BE PROVIDED BETWEEN THE UNIT AND THE ISOLATORS TO PROVIDE CONTINUOUS UNIT SUPPORT. ADDITIONALLY, THE SUPPORT BEAMS MUST BE DESIGNED TO ACCOMMODATE THE OVERALL LENGTH AND MOUNTING HOLE LOCATION OF THE ISOLATORS WHICH MAY DIFFER FROM THOSE OF THE UNIT. REFER TO VIBRATION ISOLATOR DRAWINGS FOR THIS DATA.

MODEL NO.
VC2-1052
VC2-1162
VC2-1246
VC2-1284
VC2-1376
VC2-1422
VC2-1504

 <p>BALTIMORE AIRCOIL COMPANY</p>	<p>B.A.C. ORDER NO: 95101034</p> <p>DATE: 7/11/95</p>	<p>SUGGESTED STEEL SUPPORT EVAPORATIVE CONDENSER</p> <p>DRAWING NUMBER: BAC-9932 A</p>
--	---	---




- IPS BEVELED FOR WELDING.
- (M) FAN MOTOR LOCATION.

NOTES:

1. ALL DIMENSIONS ARE IN FEET AND INCHES. WEIGHTS ARE IN POUNDS.
2. UNLESS OTHERWISE INDICATED, ALL CONNECTIONS 6 INCHES AND SMALLER ARE MPT AND CONNECTIONS 8 INCHES AND LARGER ARE BEVELED FOR WELDING.
3. DIMENSIONS SHOWING LOCATION OF COIL CONNECTIONS ARE APPROXIMATE AND SHOULD NOT BE USED FOR PREFABRICATION OF CONNECTING PIPING.
4. SPRAY WATER, OVERFLOW AND COIL CONNECTIONS ARE PROVIDED ON BOTH ENDS OF THE UNIT. ONLY ONE MAKE-UP CONNECTION IS FURNISHED, ON THE END INDICATED.
5. FOR SUPPORT REQUIREMENTS, REFER TO THE SUGGESTED STEEL SUPPORT DRAWING.

MODEL NO.	APPROX. SHIPPING WEIGHT	APPROX. OPERATING WEIGHT	HEAVIEST SECTION (COIL)	F	H
VC2-1052	44420	73170	15170	33 1/4"	13'-7 1/2"
VC2-1162	44640	73390	15170	33 1/4"	13'-7 1/2"
VC2-1246	44680	73430	15170	33 1/4"	13'-7 1/2"
VC2-1284	50880	80290	18290	42 1/2"	14'-4 3/4"
VC2-1376	50920	80330	18290	42 1/2"	14'-4 3/4"
VC2-1422	57140	87210	21400	51 3/4"	15'-2"
VC2-1504	57340	87410	21400	51 3/4"	15'-2"

 BALTIMORE AIRCOIL COMPANY	B.A.C. ORDER NO: 95101034 DATE: July 11, 1995	EVAPORATIVE CONDENSER RH UNIT DRAWING NUMBER: BAC-9858 AXHRLD
--	---	---