

Evapco Condenser-1060 Ton

Mfg: Evapco

Model: PMCA-1060

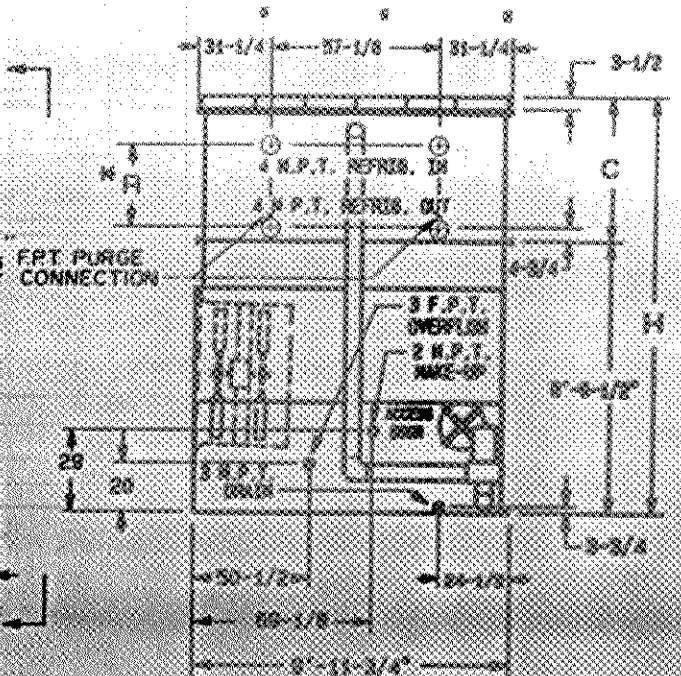
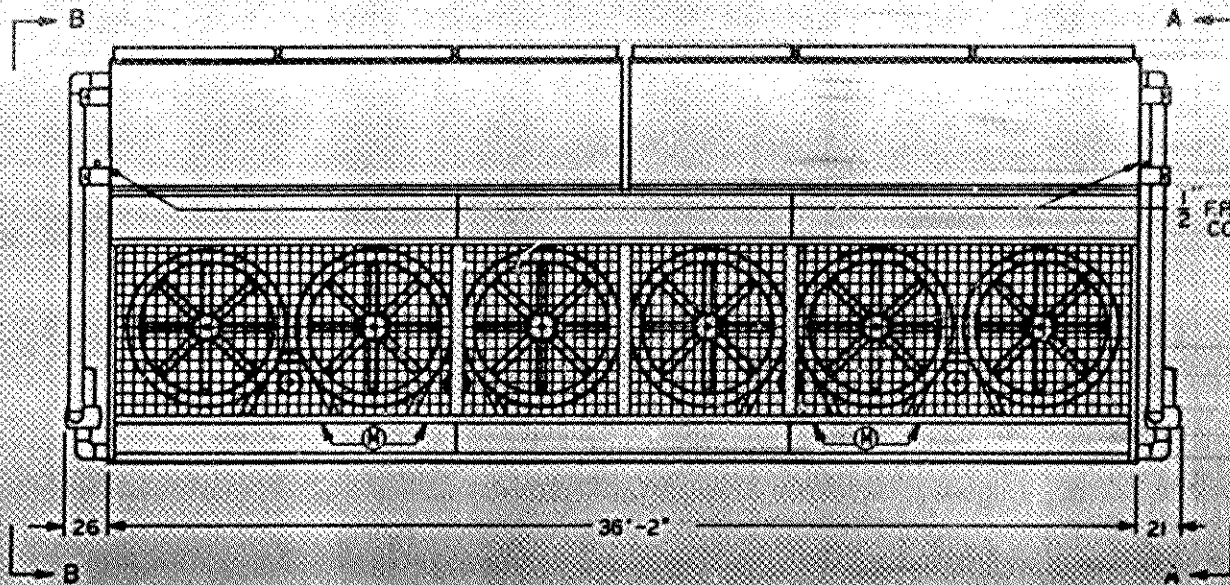
Stock No. DTTC853.

Serial No. 881632LH

Evapco Condenser-1060 Ton. Model PMCA-1060. S/N 881632LH. 6 fans w/4 motors. Stainless eliminators. (SR150).







MODEL	WEIGHTS			DIMENSIONS		
	SHIPPING	OPER.	HEAVIEST SECTION	H	C	R
PMCA 990	37800	54220	12380	12'-6-1/4"	3'-11-3/4"	22-1/4"
PMCA 1060	44070	61190	15500	13'-2-3/4"	4'-8-1/4"	30-3/4"
PMCA 1170	44470	61590	15500	13'-2-3/4"	4'-8-1/4"	30-3/4"
PMCA 1250	44760	61900	15500	13'-2-3/4"	4'-8-1/4"	30-3/4"
PMCA 1290	50860	68700	18860	13'-11-1/4"	5'-4-3/4"	39-1/4"
PMCA 1370	50990	68810	18860	13'-11-1/4"	5'-4-3/4"	39-1/4"
PMCA 1430	57600	76130	21870	14'-7-3/4"	6'-1-1/4"	47-3/4"
PMCA 1510	58140	76640	21870	14'-7-3/4"	6'-1-1/4"	47-3/4"

NOTES:

1. (M) - FAN MOTOR LOCATION
2. MAKE-UP WATER PRESSURE 20 PSI MIN. 50 PSI MAX.
3. 3/4" DIA. MOUNTING HOLES. REFER TO RECOMMENDED STEEL SUPPORT DWG. NO SPINDS
4. # - APPROXIMATE DIMENSION. DO NOT USE FOR PREFABRICATION OF CONNECTING PIPING
5. VIEW B-B SAME AS VIEW A-A LESS MAKE-UP AND DRAIN CONNECTIONS, AND OPPOSITE HAND



evaporative condenser

CERTIFIED FOR The Stellar Group (Job: Tropicana Products)
 CUSTOMERS ORDER NO. 5269-1 EVAPCO NO. 881632
 CAPACITY 10,319 MBH R-717 REFRIG 96.3° COND ----- SUCT 80° WB
 FAN MOTOR (2) 10 & (2) 5 HP ELEC SPEC 230-460/60/3
 PUMP MOTOR (2) 7 1/2 HP ELEC SPEC 230-460/60/3
 REMARKS To include 1/2" P.P.T. purge connection. Drives sized for 0" ESP.
Left hand unit.

REV.
DATE: 7-25-88

ket