

ADCO Boxformer

Mfg: ADCO

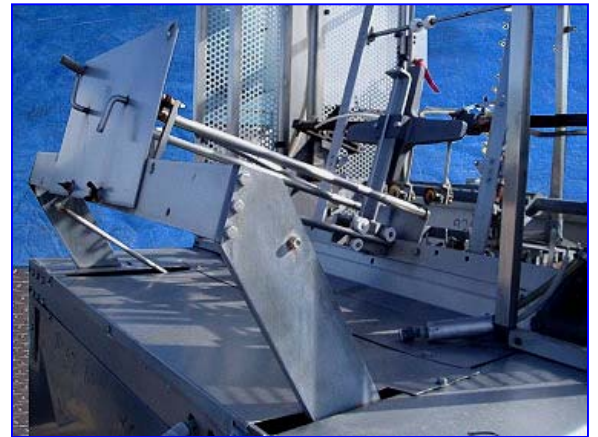
Model: AFH-60-1-SS

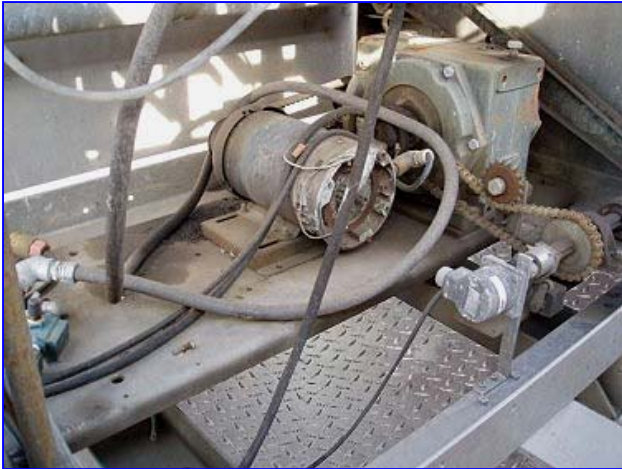
Stock No. EKTF8667.1a

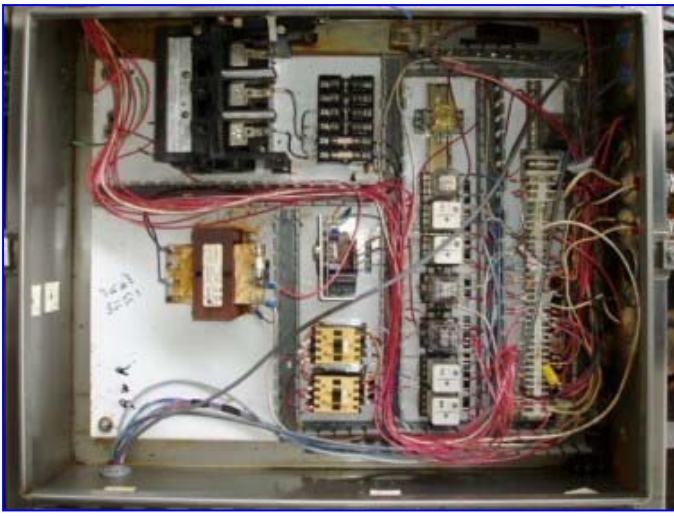
Serial No. 3419TK

ADCO Boxformer. Model: AFH-60-1-SS. S/N: 3419TK. Maximum aperture/clearance: 32 in. L x 28 in. W x 22 in. H. Boxformer features suction cups and a runner platform. Electrical requirements: 230 V, 10 amps, 3 phase. Baldor Motor, 2 hp, 1,725 rpm, 208-230/460 V, 60 Hz, 6.5-6.2/3 amps, 3 phase. Series 2000 Motor Drive, 25 ratio, 69 rpm (final). Overall dimensions: 56 in. L x 58 in. W x 91 in. H.

Stainless steel construction. Industrial Encoder Division Sensor, Model: H250-33-1000-ABZC, velocity sensor, start/stop switch. MAC vacuum sensor, Model: 55B-11-PI-111AA, working pressure: 150 psi. Control Panel with Contrex M-Track Controllers. M-Track is a configurable, microprocessor-based digital controller. M-Track's capabilities include: providing synchronized control in applications requiring one part of a process to follow or be paced by another part of a process, isolated analog interface to any AC or DC drive, pre-programmed, operator interface for setup & monitoring, full registration & synchronization, and learn mode for Set-Up. Control panel also features a Jefferson transformer, Cat No: 636-1161, 250 VA, 50/60 Hz. (5) Electrical female connections: (2) 15 amps-250V, (1) 15 amps-125V, (2) 20 amps-250V. Overall dimensions of control panel: 37 in. L x 12 in. W x 68 in. H.







Line terminal guard; cat No: 1494V-DS30 A

Standart Ratings					
3 phae AC		1 phase AC		DC 3 pole	
115V	3 HP	115 V	1/2 HP	125V	2 HP
200-230V	3 HP	230 V	11/2HP	250V	5 HP
460V	5 HP				
575V	71/2HP				
Maximum Ratings					
3 phase AC		1 phase AC		DC 3 pole	
115V	3 HP	115 V	2HP	125V	2 HP
200-230V	71/2HP	220 V	3HP	250V	5 HP
460V	15 HP				
575V	20 HP				

The M-Track control is housed in a 1/2 DIN vertical instrument enclosure with embedded operator interface. The integrated display and keypad panel gains access to numerous control and monitor parameters. Individual application requirements are met by simply accessing the relevant code parameter and then entering the appropriate numerical value. Because the M-Track control is pre-programmed, applications can be commissioned in a matter of minutes once the control has been installed. A full compliment of monitor parameters are available to verify operation and assist with diagnostics.

The M-Track control has a serial port for RS422/485 communication. Contrex Host software, when loaded on a Windows® PC or laptop, allows you to initiate commands, change parameters, load/save setup values, and monitor more than 50 values on one or up to 32 channels of M-Series controllers.