

## GCI Refrigeration Technologies Chiller – 60 Tons

**Mfg: GCI Refrigeration Technologies**

**Model: 660ACTLTOD**

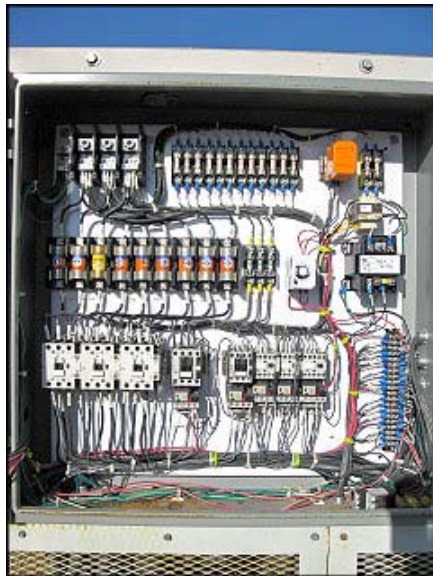
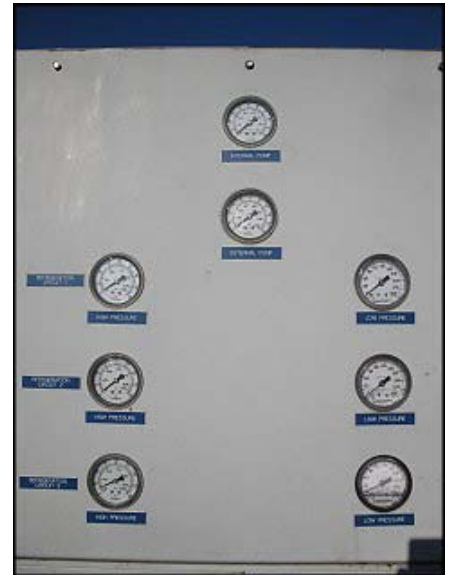
**Stock No: FGNW01.35**

**Serial No: ACTLT6600611083**

GCI Refrigeration Technologies. Model: 660ACTLTOD. S/N: ACTLT6600611083. Refrigerant: R-404a, (174 lbs. for three systems, 58 lbs. each). Tank capacity: 200 gallons. Rated at 159,600 BTU/hr @ -20°F. Respective minimum and maximum design pressures are: 5 psi and 395 psi. Maximum ambient temperature: 95°F. Main power: 460V, 60 Hz, 3 phase. FLA 135(NRA 115.2). Max fuse 60. (3) 22 HP Copeland compressors: model 4DT3F76KE-TSK-200. (3) 1-1/2 HP Fans. Features include: internal and external circulating pumps regulated by two flow switches for optimal flow, electrical phase monitor sensing, “on demand” temperature control provided by a TecnoLogic S.P.A. TLK 31C microprocessor-based digital electronic multistep controller, auxiliary contacts capable of actuating pneumatic valves, and by employing extra insulation, a compressor fitted suction accumulator and crankcase heater, this unit is equipped for better control of heat gained from the environment and optimized use at low temperatures(+10°F to -30°F). Inlet/outlet: (2) 4 in. Listed shipping weight: 5000 lbs. Overall dimensions: 13 ft. L x 7 ft. 2 in. W x 6 ft. 8 in. H.







**GCI REFRIGERATION TECHNOLOGIES**

MODEL  SERIAL

VOLTS  PH  HZ  FLA

CAPACITY  BTU / HR AT  °F COOLANT

REFRIGERANT  AMOUNT  lb *58 lbs/ea*

DESIGN PRESSURE HI  psi LOW  psi

MAXIMUM AMBIENT TEMP  MAXIMUM FUSE

GCI REFRIGERATION TECHNOLOGIES, INC.  
 6 DOCKVIEW DRIVE, SUITE 900 TEL (302) 655-9600  
 NEW CASTLE, DE 19720 FAX (302) 655-5500