

## Flaked Ice Making System – 4 Tons / Day with Freon Refrigeration Package

**Mfg: North Star Ice**

**Model: M-10**

**Stock No: GEN9001**

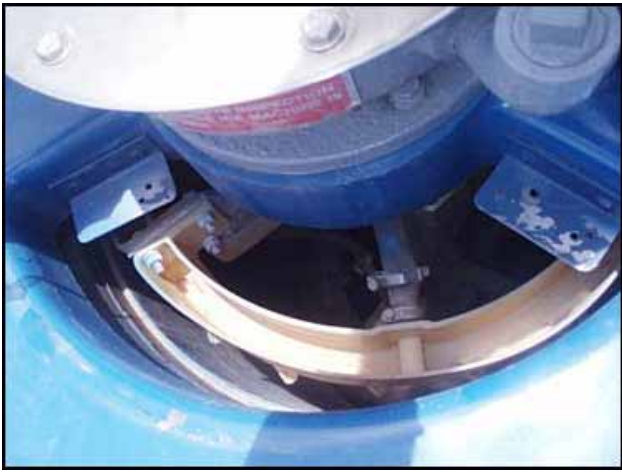
**Serial No: 4941**

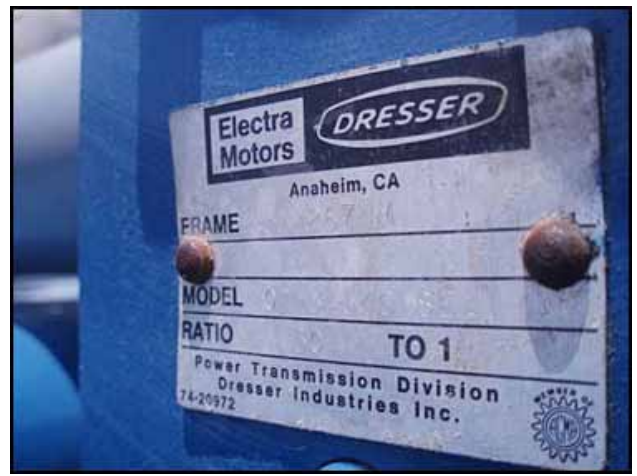
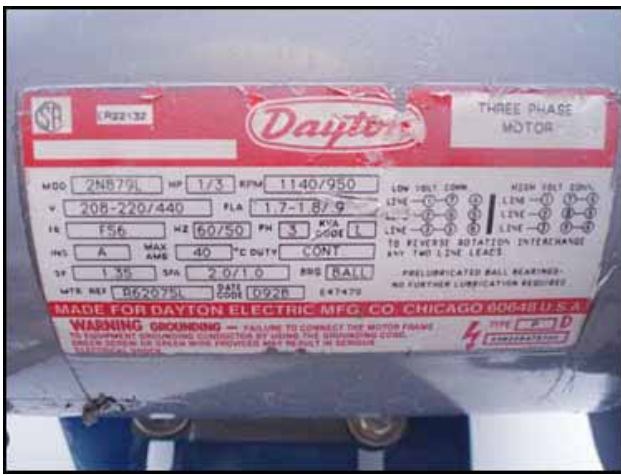
System consists of a North Star Model 10 Ice Flaker with Screw Auger Discharge, 4-Cylinder Carrier / Carlyle R-22 compressor, and Russell VAC-55 Air Cooled Condenser. System should output an approximate maximum of 8,000 lbs (4 tons) of flaked ice per day.



North Star Ice M10 Flake Ice Maker. Model: M1080S4. S/N: 4941. Nat'l Bd: 2665. Stainless steel construction. Capacity: 4.0 tons/day at -25 °F evaporator temperature and 60 °F water supply temperature. Refrigerant: Freon. MAWP @ 300 °F: 150 psi. Head thickness: 0.625 in. Dayton Motor, 1/3 hp, 1140/950 rpm, 208-230/460 V, 1.7-1.8/0.8 amps, 60/50 Hz, 3 phase. Electra Dresser Motor Drive, 50 ratio, 22.8/19 rpm (final). Makes ice from fresh water, seawater or other liquids. Stainless steel water path components make the unit approved for use in USDA-inspected meat and poultry plants and for other food processing applications. Inlets: (1) 1/2 in. dia. pipe (water), (1) 1 in. dia. pipe (media). Outlets: (1) 1/2 in. dia. pipe (media), (1) 2-1/2 in. dia. pipe (waste water), (1) 18 in. dia. discharge. Overall dimensions: 48 in. L x 38 in. W x 48 in. H.



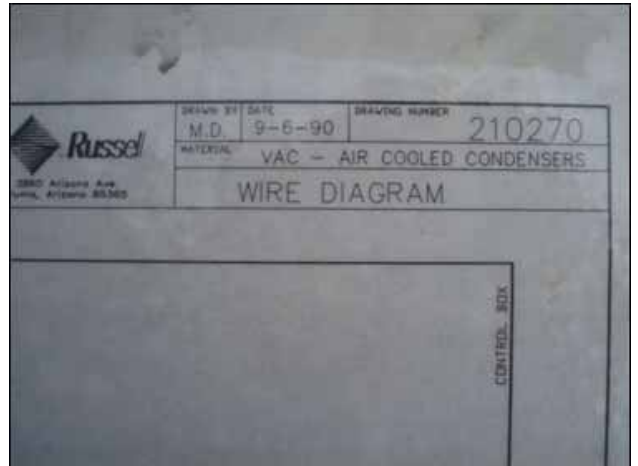
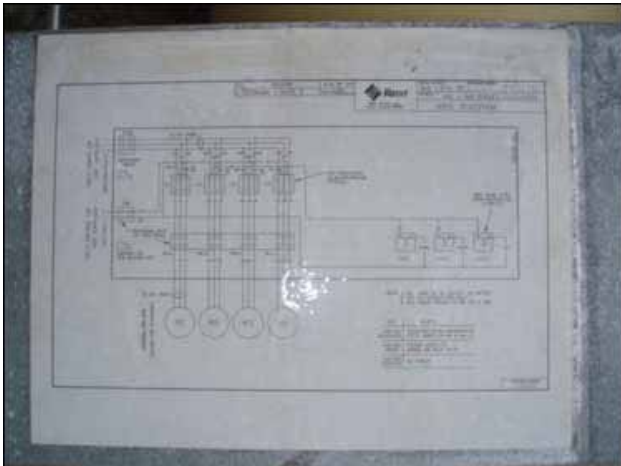
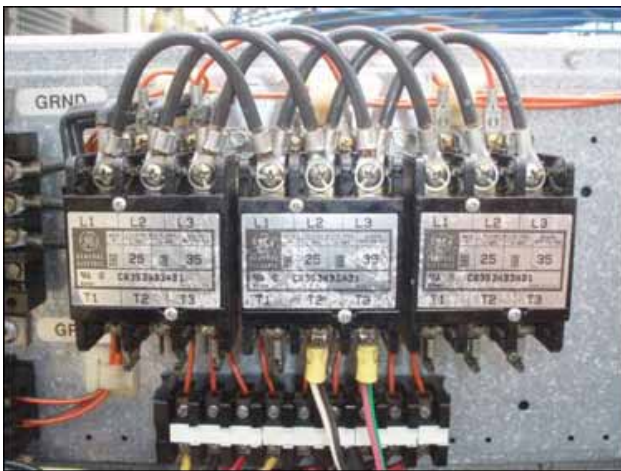




Russell Air Cooled Condenser. Model: VAC-55. S/N: H936C0011. Refrigerant: R22, water, glycol.  
 Approximate Capacity: 40 tons. Design pressure: 380 psig. Number of fans: 3. Fan diameter: 2 ft. 5 in. dia. Airflow: 31000 cfm. (3) Marathon Electric Motors, 1-1/2 hp, 1140 rpm, 208-230/460 V, 5.45-5.4/2.7 amps, 60 Hz, 3 phase. Inlets: (1) 2 in. dia. port. Outlets: (1) 1 in. dia. port. Overall dimensions: 13 ft. 9 in. L x 4 ft. W x 3 ft. 8 in. H.







Carlyle Open-Drive Reciprocating Compressor. Model 5F40-149. S/N 2698J01090. Cylinders: 4. Nominal hp: 20. Output: 39.8 cfm @ 1750 rpm. Slightly used. Complete with water cooled heads, external unloaders, auxiliary external oil pump, service valves and mounting frame.

