

1995 Frick Screw Compressor Package-125 HP

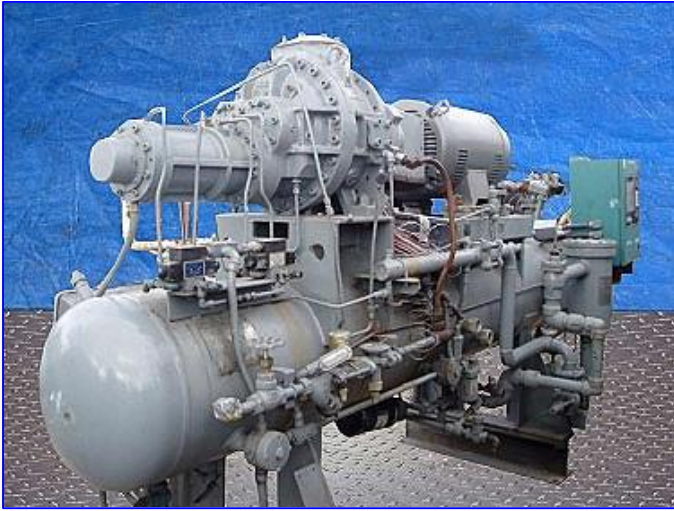
Mfg: Frick

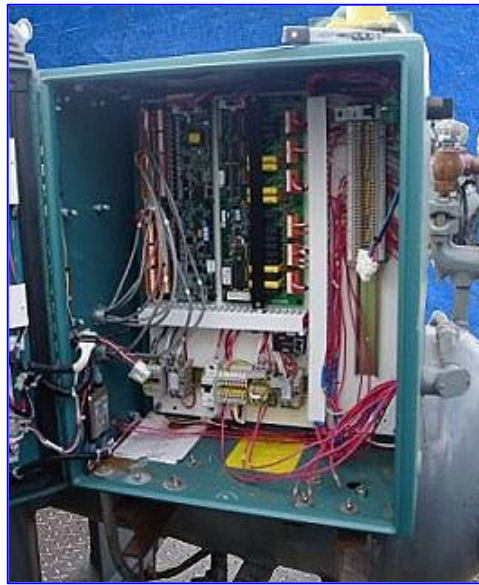
Model: RWB II 60H

Stock No. GHBE001.

Serial No. 50014C1MPLHAC3

1995 Frick Screw Compressor Package-125 HP. Model: RWB II 60H. S/N: 50014C1MPLHAC3. S.O: 206432-02. Rotary Screw Compressor. Model/Serial No: TDSH163S1276AR. Refrigerant: NH3/R22. Volume Ratio: 2.2 : 5.0. Maximum speed: 4500 rpm. Maximum design pressure: 362 psig. Oil Separator, MAWP: 300 psig @ -20 to + 200. Matl SA: 53-S-TB. T.S. 6000. Quantum Control Panel installed 2005. New motor installed 2005. Baldor Motor, 125 hp, 3550 rpm, 460 V, 140 amps, 60 Hz, 3 phase. Inlets: (1) 6 in. dia. flanged suction port. Outlets: (1) 3 in. dia. discharge port. Overall dimensions: 11 ft. 7 in. L x 51 in. W x 75 in. H.







**RWB II 60
R717 Single Stage**

CoolWare v6.20.002 Registered To: Frick - Jacksonville Sales Office - John Garner

Customer Name: The Stellar Group

Ref #:

Date: 08/19/05

End User Name:

Item: Screw Package Refrig (3)

Run: 1

Project: Tampa, FL

SYSTEM PERFORMANCE SUMMARY

Evaporator Load	58.8 TR	Coeff. of Performance	3.226
Compressor Power	144.4 Hp	Performance Factor	1.46 Hp/TR

COMPRESSOR - TDSH 163S

Shaft Power	144.4 Hp	Eff Model	R717 (Ammonia)	Suction Valve	Standard
Speed	3560 rpm	Volumetric Eff	85.9 %	Suct Valve dP	0.2 psi
Loading	100.0 %	Adiabatic Eff	74.7 %	Discharge Valve	Standard
Compression Ratio	4.95	Discharge Port	Standard	Disc Valve dP	0.3 psi
Volume Ratio	3.33	Liquid Inj Valve	EZ Cool		
Ideal Volume Ratio	3.33	Liquid Inj Port	Low VI		
		Liquid Inj Flow	7.1 lbm/min		

	Temperature (°F)	Pressure (psia)	Mass Flow Rate (lbm/min)	Volume Flow Rate (cfm)
Suction	21.6	39.8	42.3	307.1
Discharge	160.0	197.4	39.4	89.2

OIL SYSTEM

Oil Cooling	Liquid Injection	Oil Pump	None	Oil Flow	21.5 gpm
Oil Type	Frick #3	Main Inj Valve Pos	50.0 %	Main Inj Flow	6.9 gpm
Oil Cooler Heat Rej.	224.8 kBtu/hr			Bearing Flow	14.6 gpm
Oil Injection Temp	160.0 °F			Oil Manifold	185.4 psia

EVAPORATOR

Temperature	11.7 °F	Pressure	40.0 psia	Superheat	0.0 °F
Suction Line Superheat	10.0 °F	Suction Line Pressure Drop	0.0 psi		
Heat Load	58.8 TR				

CONDENSER

Temperature	94.8 °F	Pressure	195.1 psia	Subcooling	0.0 °F
Desuperheat	0.0 °F	Disc Line Pressure Drop	0.0 psi	External Subcooling	0.0 °F
Heat Rejection	1567.8 kBtu/hr				

ERRORS AND WARNINGS

No compressor errors reported.

Disclaimer: The information contained in this program is subject to change without notice. Frick reserves the right to final verification of all rating results.

#2

2