

Vogt Ice Turbo Stainless Steel Clad Ice Maker – 40 Ton

Mfg: Vogt Ice

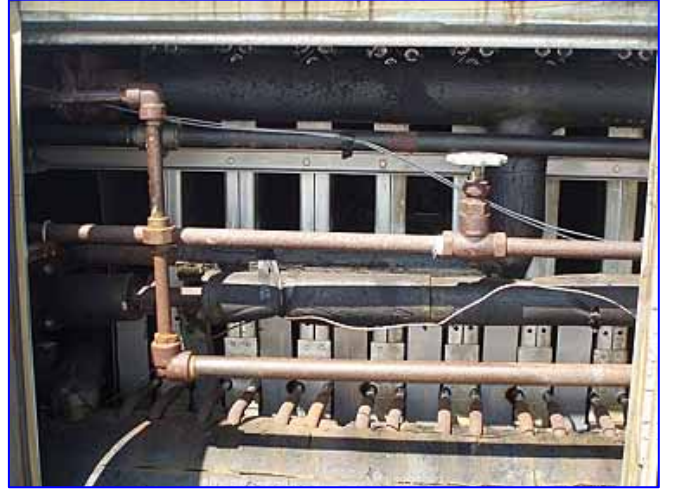
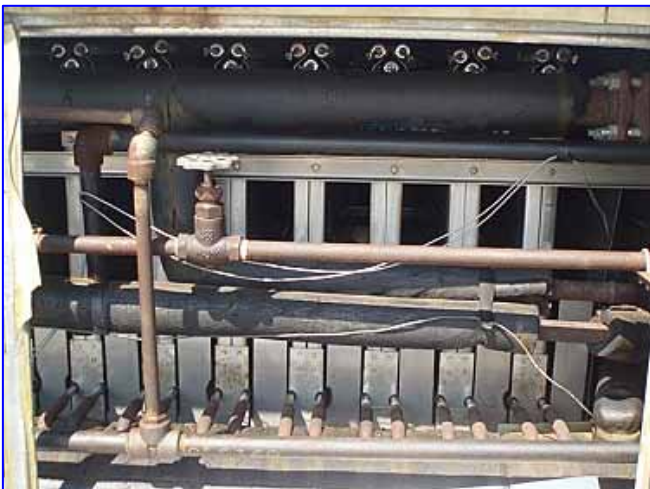
Model: Turbo CAR80LR

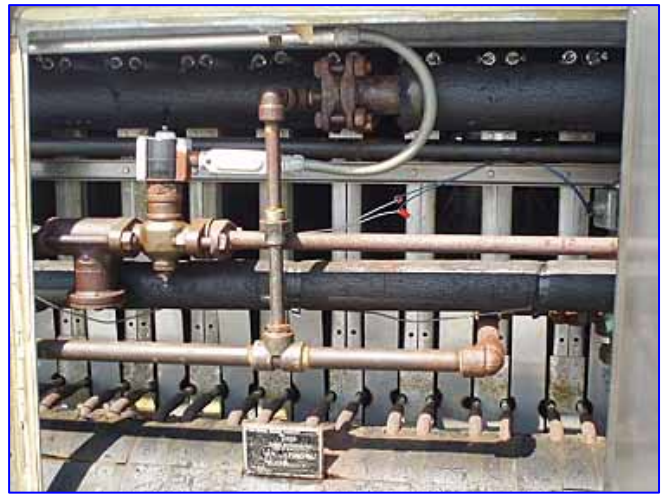
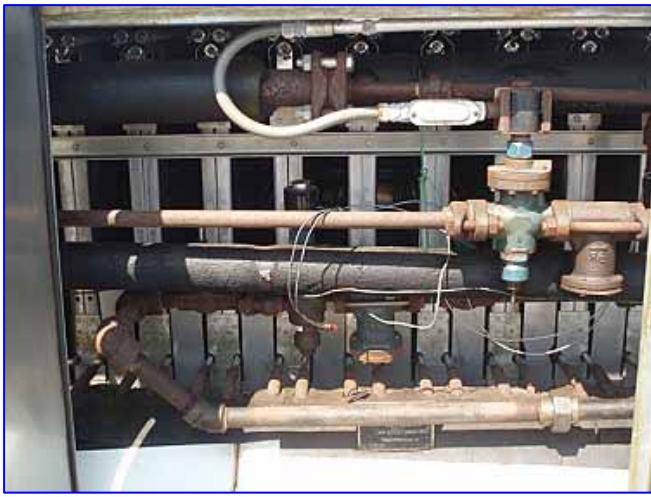
Stock No: HDCF238

Serial No: 8303700

Vogt Ice Turbo Refrigeration Stainless Steel Clad Ice Maker- 40 Ton. Model: CAR80LR. S/N: 8303700. Refrigerant: ammonia. Power supply: 480 V, 18 FLA, 60 Hz, 3 phase. Control power supply: 115 v, 60 Hz, single phase. Turbo Refrigeration Ammonia Oil Separator Tank, S/N: 83-002, MAWP: 150 psi @ -20 to 150 °F. (4) American Stainless Centrifugal Pumps. Model: SSPC, S/N's: 00G3492, 00G3495, 00H4164, 00G3496, Cat. No: KC25454B_V1, size: 1.5x2.0. (4) Baldor Industrial Motors, 1 hp, 1725 rpm, 230/460 V, 3.4/1.7 amps, 60 Hz, 3 phase. (2) Viking Rotary Pumps, Model: K-4925, S/N's: 1985762 and 1949879. (2) Dayton Motors, 1-1/2 hp, 1150/950 rpm, 208-220/440 V, 5.5-5.2/2.6 amps, 60/50 Hz, 3 phase. (2) U.S. Electric Ice Crusher Motor Drives, 2 hp, 1725 rpm, 115 rpm (final), ratio: 11.25, 208-230/460 V, 6.5-6.2/3.1 amps, 60 Hz, 3 phase. Screw Auger Conveyor, screw auger dimensions: 9 in. dia. x 23 ft. 2 in. L, pitch: 6 in., infeed dimensions: 21 ft. 7 in. L x 10 in. W, discharge dimensions: 10 in. L x 10 in. W. Screw Auger Motor, 2 hp, 1740 rpm, 208-230/460 V, 6.6-6.4 amps, 60 Hz, 3 phase. Morris Gear Drive, 10 ratio, 174 rpm (final). Inlets/outlets: (2) 3/4 in. dia. refrigerant discharge port, (2) 1/2 in. dia. drain valve, (2) 1-1/2 in. dia. drain port, (1) 2 in. dia. copper tube feedwater port, (1) 2 in. dia. drain port, (2) 2-1/2 in. dia. flanged refrigerant suction port, (4) 3 in. dia. PVC overflow pipe, (1) 3 in. dia. PVC drain port. Screw auger overall dimensions: 25 ft. 8 in. L x 18 in. W x 28 in. H. Overall dimensions: 22 ft. 8 in. L x 8 ft. 2 in. W x 12 ft. 2 in. H. (2) Stainless Steel Ice Chutes, infeed dimensions: 9ft. 7in. L x 10 in. W, discharge dimensions: 9ft. 7 in. L x 12-1/2 in. W. Ice chute overall dimensions (ea): 9ft. 7in. L x 3ft. 3 in. W x 1ft. 6 in. H.







NATIONAL BOARD NUMBER
TURBO
 TURBO REFRIGERATING
 NAME OF MANUFACTURER
 150 PSI at 20-250 °F
 (MAX. ALLOWABLE WORKING PRESS.)
 83-002
 MANUFACTURER SERIAL NO.
 1083
 YEAR BUILT

