

Reco / Frick RWB-399 Ammonia Screw Booster Compressor Package - 300 HP

Mfg: Reco/Frick

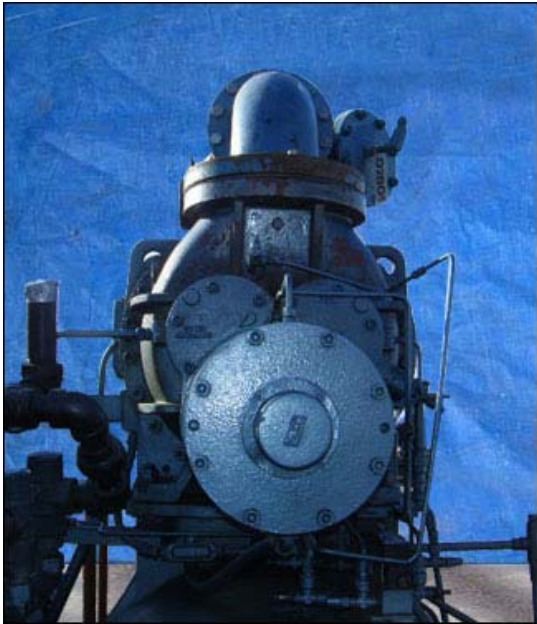
Model: GDS283L0020V / RWB-399

Stock No: KWBF173

Serial No: GDS283L0020V

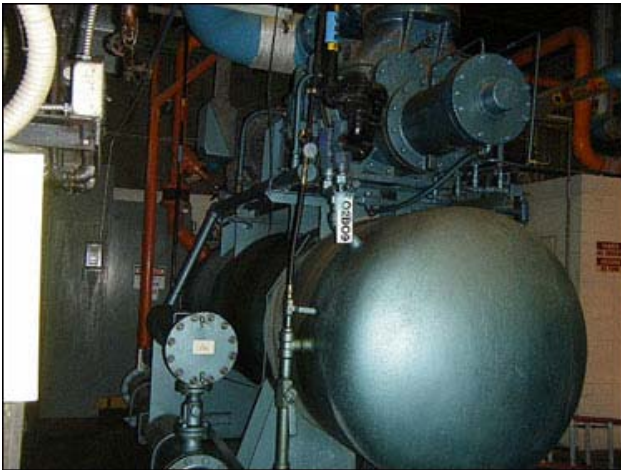
Reco / Frick RWB-399 Ammonia Screw Booster Compressor Package. Same machine as FRICK RWB-399. Frick rotary screw compressor, Model / S/N: GDS283L0020V. Refrigerant: last used with R-717 (Ammonia). Variable Vi setting: 2.2 – 5.0. Displacement: 2,349 cfm. Maximum speed: 3600 rpm. Max design pressure: 362. Reco oil separator, Nat'l bd: 8304, S/N: M857230-A, MAWP: 150 psi @ 300°F, MDMT: -20°F @ 150 psi, radius: 2:1 elliptical ends. Reco oil cooler, Nat'l bd: 8283, S/N: M906060-F, shell side MAWP: 350 psi @ 300°F, shell side MDMT: -20°F @ 250 psi, tube side MAWP: 250 psi @ 300°F, tube side MDMT: -20 @ 250 psi. Reco filter housing, S/N: M904840N, MAWP: 350 psi @ 300°F. Toshiba World Energy Series drive motor. Model: B3002VLG3BD ODP. S/N: 6Y00151. 300 hp, 3540 rpm, 460 V, 330 amps, 60 Hz. 3 phase. Frame: 447TSS. M & M Refrigeration control panel, Model: IQC932VLP717. S/N: M857-240A. Power supply: 120 V, 1 phase, 60 Hz. Toshiba pump motor, 5 hp, 1160 rpm, 230/460 V, 14.0/7.0 amps, 60 Hz, 3 phase. Frame: 215T. Overall dimensions: 15 ft. L x 5 ft. 11 in. W x 11 ft. 2 in. H.(ACN1548-87).

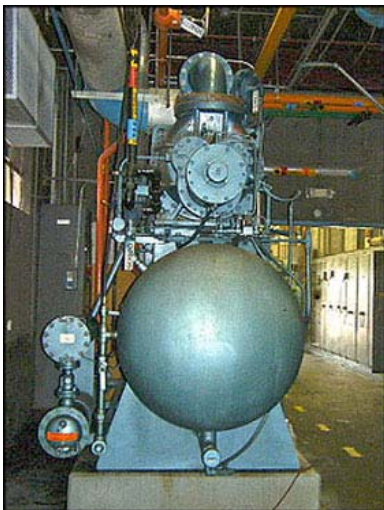






The following are pictures of the unit installed:





MODEL 1QC952VLP717 HP 300
 BOOSTER
 SERIAL MB57-2404 MFG DATE 1987
 REFRIGERANT R-717 AMMONIA
 MOTOR
 VOLTAGE 480 PHASE 3 HERTZ 60
 CONTROL
 VOLTAGE 120 PHASE 1 HERTZ 60
 REFRIGERATION ENGINEERING CORP.
 SAN ANTONIO TEXAS 78217

ROTARY SCREW COMPRESSOR
 MODEL/SERIAL NO. G1S231012V
 MAXIMUM SPEED-RPM 3600
 MAX. DESIGN PRESS. PSIG 362
 COMPRESSOR MFGD. UNDER PATENTS LICENSED FROM SVENSKA ROTOR MASKINER AKTIEBOLAG, SWEDEN

WORLD ENERGY SERIES
 3-PHASE INDUCTION MOTOR
 MODEL NO. B3002VLG3ED 300P
 VOLTS 480 AMP. 330
 TYPE TIKK FRAME 447155
 FORM VCK1 SERVICE FACTOR 1.15
 HP 300 RPM 3540 BRG. L.S. 6313C3
 POLES 2 MAX. AMB. 140 °C NO. O.S. 6313C3
 CLASS INS. F TIME RATING CONT. SER. # 6Y00151
 DESIGN B CODE F Hz 60