

## Unused North Star Flake Ice Maker, Model M10SS00

Mfg: North Star

Model: M10SS00

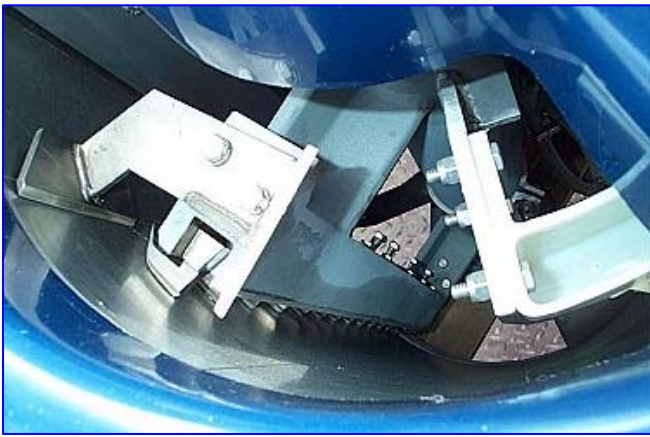
Stock No. LYNT003.

Serial No. 1064

Unused North Star Flake Ice Maker. Model: M10SS00. S/N: 1064. Nat'l Bd: 1366. Stainless steel construction. Capacity: 4.7 tons/day at -25 °F evaporator temperature and 60 °F water supply temperature. Refrigerant: Freon 22. MAWP @ 300 °F: 150 psi. MDMT @ 150 psi: -20 °F. Head thickness: 0.75 in. Shell thickness: 0.25 in. Coastline Refrigerant Receiver Tank, MAWP @ 650 °F: 150 psi, MDMT @ 150 psi: -20 °F. Leeson Motor, 1/3 hp, 1140 rpm, 208-230/460 V, 0.8 amps, 60 Hz, 3 phase. Electra Dresser Motor Drive, 50 ratio, 22.8 rpm (final). Makes ice from fresh water, seawater or other liquids. Stainless steel water path components make the unit approved for use in USDA-inspected meat and poultry plants and for other food processing applications. Inlets: (1) 1/2 in. dia. pipe (water), (1) 1-1/2 in. dia. Pipe (media). Outlets: (1) 3/4 in. dia. pipe (media), (1) 2-1/2 in. dia. Pipe (waste water), (1) 18 in. dia. discharge. Overall dimensions: 48 in. L x 38 in. W x 48 in. H.

Produces more ice per ton of refrigeration than any other ice maker using an equally rated compressor. Makes sub-cooled ice with better cooling power than any other ice maker. Harvests ice continuously with no defrost cycles. Reduces refrigeration losses with insulated fiberglass enclosure. Converts all make-up water to ice eliminating waste. Saves space with compact design. Installs with standard construction equipment and requires minimal maintenance. Designed with only one major moving part and no refrigerant seals.

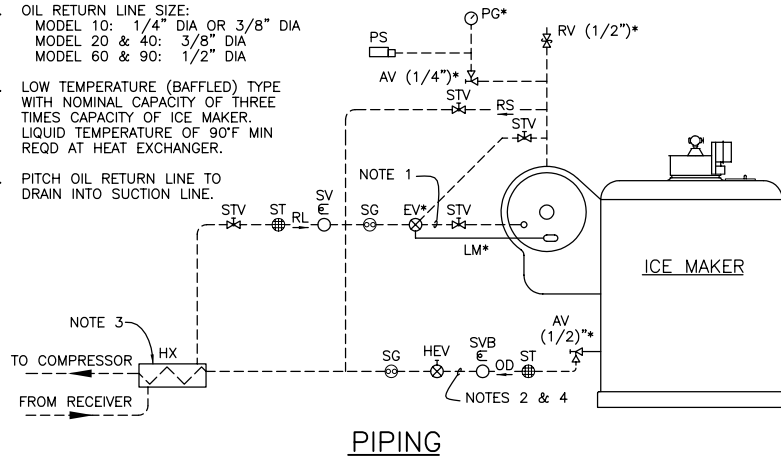




## HALOCARBON REFRIGERANT

### NOTES:

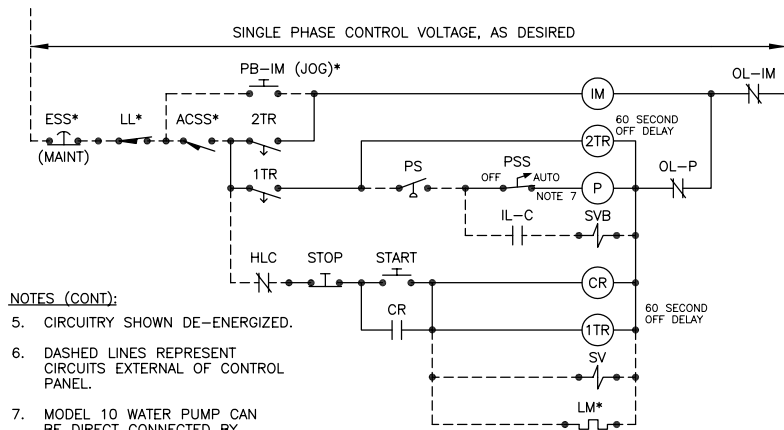
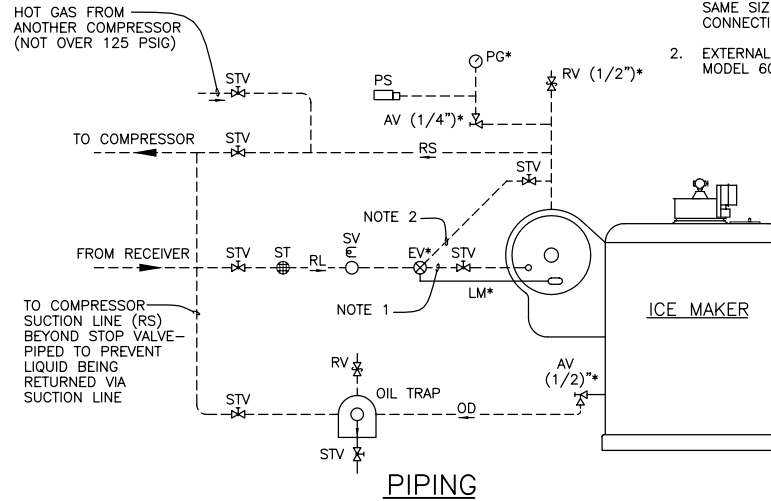
- ENLARGE PIPE BEYOND (EV) TO SAME SIZE AS ACCUMULATOR CONNECTION.
- OIL RETURN LINE SIZE:  
MODEL 10: 1/4" DIA OR 3/8" DIA  
MODEL 20 & 40: 3/8" DIA  
MODEL 60 & 90: 1/2" DIA
- LOW TEMPERATURE (BAFFLED) TYPE WITH NOMINAL CAPACITY OF THREE TIMES CAPACITY OF ICE MAKER. LIQUID TEMPERATURE OF 90°F MIN REQD AT HEAT EXCHANGER.
- PITCH OIL RETURN LINE TO DRAIN INTO SUCTION LINE.



## AMMONIA

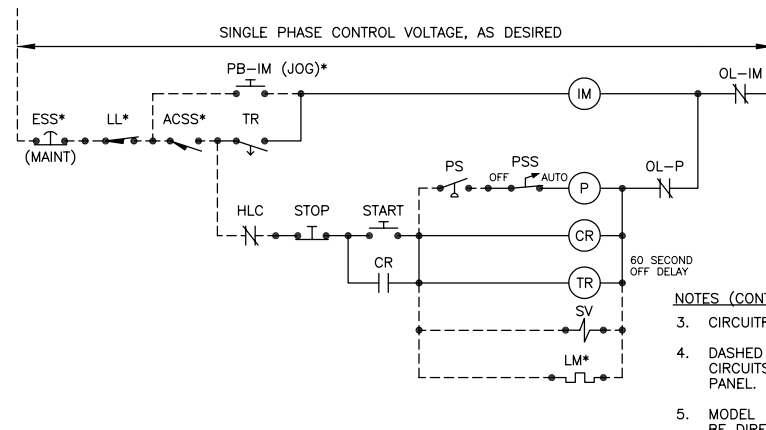
### NOTES:

- ENLARGE PIPE BEYOND (EV) TO SAME SIZE AS ACCUMULATOR CONNECTION.
- EXTERNAL EQUALIZING LINE FOR MODEL 60 & 90 MACHINES ONLY.



### NOTES (CONT):

- CIRCUITRY SHOWN DE-ENERGIZED.
- DASHED LINES REPRESENT CIRCUITS EXTERNAL OF CONTROL PANEL.
- MODEL 10 WATER PUMP CAN BE DIRECT CONNECTED BY ADDING A 3-AMP FUSE IN LINE.
- REMOTE ITEMS MARKED WITH ASTERISK (\*) ARE SUPPLIED STANDARD WITH ICE MAKER.



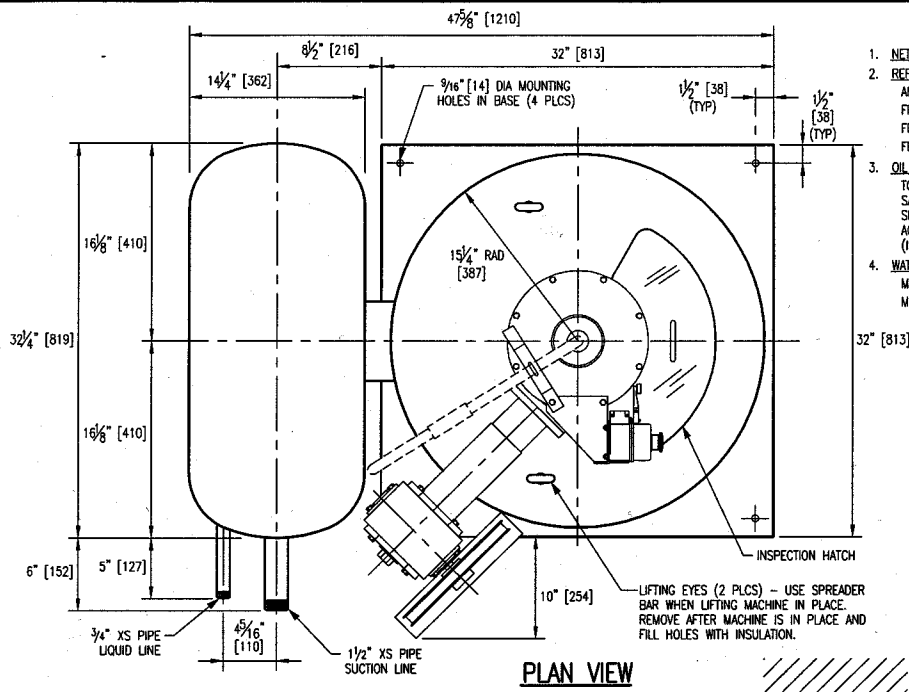
### NOTES (CONT):

- CIRCUITRY SHOWN DE-ENERGIZED.
- DASHED LINES REPRESENT CIRCUITS EXTERNAL OF CONTROL PANEL.
- MODEL 10 WATER PUMP CAN BE DIRECT CONNECTED BY ADDING A 3-AMP FUSE IN LINE.
- REMOTE ITEMS MARKED WITH ASTERISK (\*) ARE SUPPLIED STANDARD WITH ICE MAKER.

## LEGEND

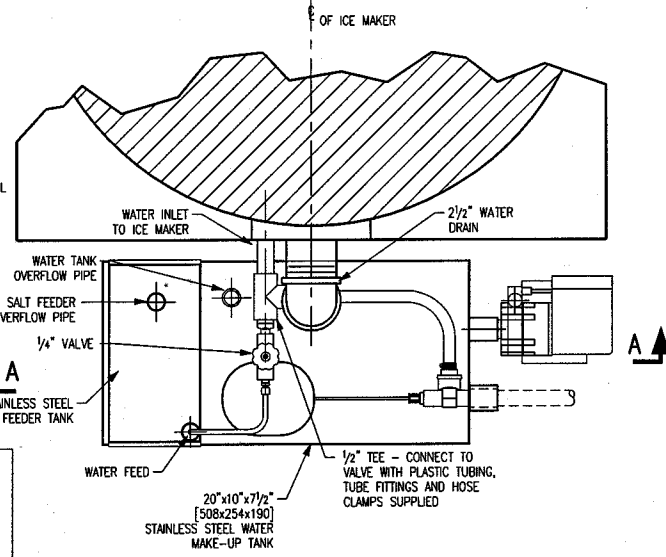
ACSS — ACCESS COVER SAFETY SWITCH	P — WATER PUMP STARTER COIL
AV — ANGLE VALVE	PB-IM — PUSH BUTTON - ICE MAKER
CR — CONTROL RELAY	PG — PRESSURE GAUGE
ESS — EMERGENCY STOP SWITCH	PS — PRESSURE SWITCH (CLOSES ON PRESSURE DROP)
EV — EXPANSION VALVE (LEVELMASTER CONTROL)	PSS — PUMP SELECTOR SWITCH
HEV — HAND EXPANSION VALVE	RL — REFRIGERANT LIQUID LINE
HLC — HIGH LIMIT CONTROL (ICE BIN FULL)	RS — REFRIGERANT SUCTION LINE
HX — HEAT EXCHANGER	RV — RELIEF VALVE
IL-C — INTERLOCK CONTACT - COMPRESSOR STARTER	SG — SIGHT GLASS
IM — ICE MAKER DRIVE STARTER COIL	ST — STRAINER
LL — LOAD LIMIT SWITCH	STV — STOP VALVE
LM — LEVELMASTER HEATER ELEMENT	SV — SOLENOID VALVE IN REFRIGERANT LIQUID FEED LINE
OD — OIL DRAIN LINE	SVB — SOLENOID VALVE IN OIL BLEED RETURN LINE
OL — OVERLOAD CONTACT, AS INDICATED	TR — TIME DELAY RELAY, AS INDICATED

Title REFRIGERANT PIPING AND ELECTRICAL WIRING DIAGRAM FOR M-10, 20, 40, 60 AND 90 ICE MAKER WITH LMC CONTROL		6-26-02	ADDED 3/8" DIA CALLOUT TO M10 OIL RETURN LINE SIZE
		5-6-98	CORRECTED PIPING DIAGRAMS
		6/7/95	REDRAWN AND UPDATED
Drawn TD-STOREY	Checked	Approved	Reference
Date 6/7/95			Drawing No. 10PW-0 LMC
Scale NONE			



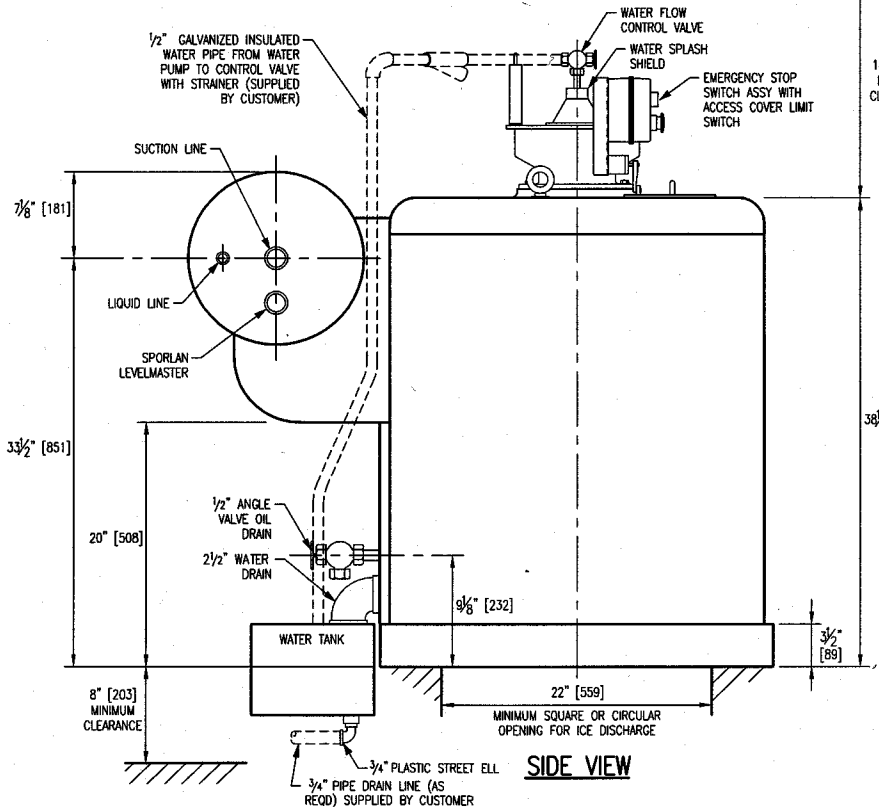
**PLAN VIEW**

- DATA**
- NET WEIGHT - 930 lbs. (422 kg.)
  - REFRIGERANT CAPACITY - 68 cu. ft. (0.2 cu. mtr.)
    - AMMONIA - 26 lbs. AT 70°F (11.8 kg, AT 21°C)
    - FREON 12 - 56 lbs. AT 70°F (25.4 kg, AT 21°C)
    - FREON 22 - 51 lbs. AT 70°F (23.1 kg, AT 21°C)
    - FREON 502 - 53 lbs. AT 70°F (24.0 kg, AT 21°C)
  - OIL REQUIREMENTS (MACHINE SHIPPED WITHOUT OIL)
    - TOP GEAR HOUSING - 5 pints (2.4 liter)
    - SAE 80W OR 90W (ISO 100 OR 150) TRUCK DUTY GEAR OIL
    - SPEED REDUCER - 4 pints (1.9 liter)
    - AGMA NO 7 OR 8 COMPOUND WORM GEAR OIL (ISO 460 OR 680)
  - WATER REQUIREMENTS
    - MINIMUM TEMPERATURE - 40°F TO 45°F (4.4°C TO 7.2°C)
    - MINIMUM PRESSURE - 20 psig (1.4 kg./sq. cm.)

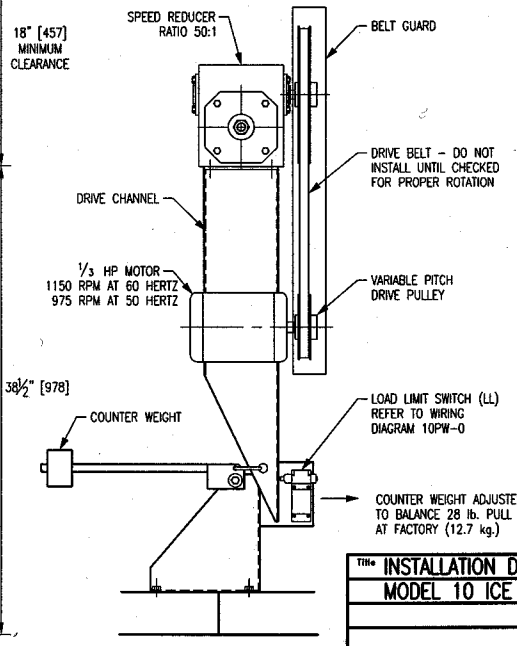


**PLAN VIEW OF WATER TANK**

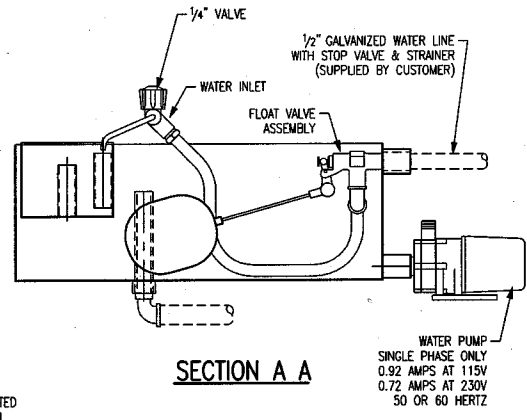
- NOTES:**
- DIMENSIONS IN BRACKETS ARE METRIC EQUIVALENTS IN [MILLIMETERS].
  - SEAL BASE ALL FOUR SIDES WITH SILICONE SEALANT OR EQUIVALENT.
  - INSTALL ICE MAKER IN WEATHER PROTECTED AREA MAINTAINED ABOVE FREEZING.
  - OIL LEVELS SHOWN ARE APPROXIMATE. FILL ALL GEAR REDUCERS TO CORRECT LEVEL INDICATED ON GEAR HOUSING.
  - SUPPORT ICE MAKER BASE UNDER ALL FOUR SIDES ON LEVEL SURFACE.



**SIDE VIEW**



**DRIVE ASSEMBLY**



**SECTION A A**

Title		CORRECTED LOCATION OF MOUNTING HOLES	
INSTALLATION DATA FOR		8/22/01	UPDATED
MODEL 10 ICE MAKER		2/15/01	NET WT. WAS 1300 LB.
		6/15/99	
Rev.	Date	Description of Revision	
Drawn	Checked	Approved	Reference
Date			Drawing No.
15 JUNE, 1999			1010-0
Scale			
NONE			

**North Star**  
**ICE EQUIPMENT CORPORATION**  
 8151 Occidental Ave. So. Seattle, WA 98108