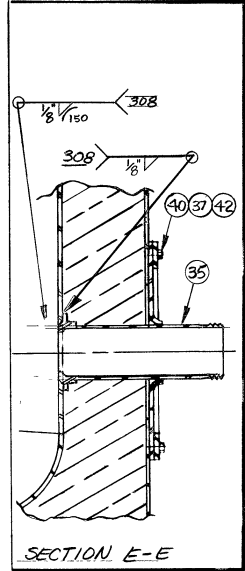
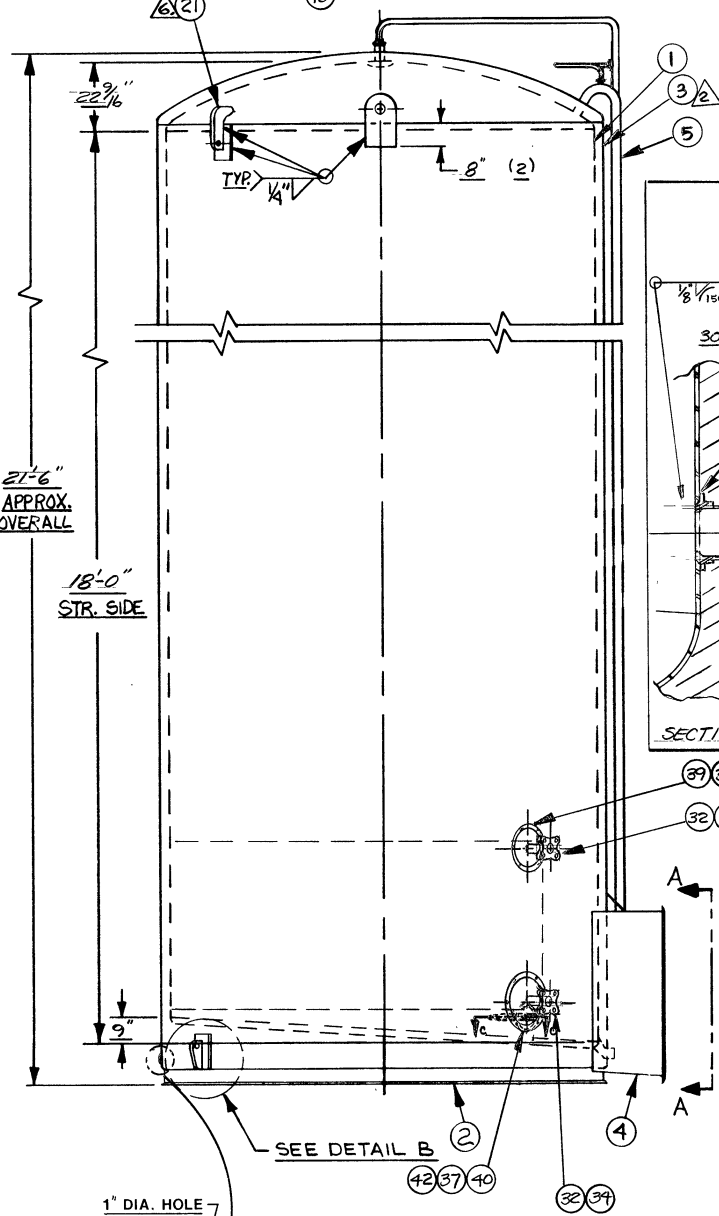
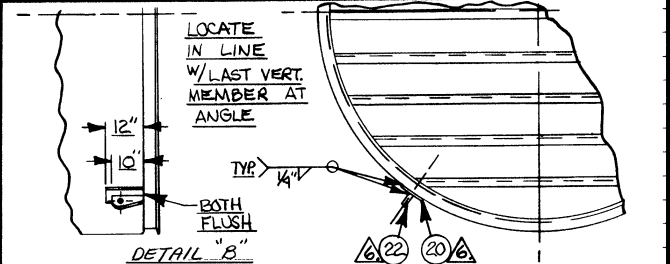


VIEW A-A, SCALE 1"=1'

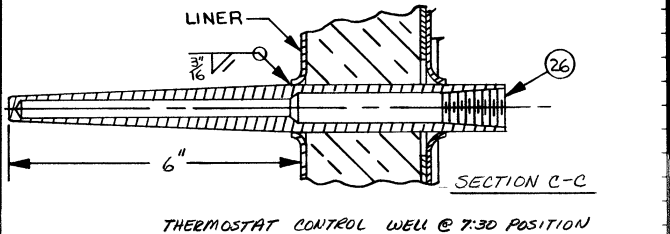
NOTE: HOLE SIZE IN WALL IS 63" WIDE X 63" HIGH FOR STD. 59 1/4" X 59 1/4" ALCOVE.



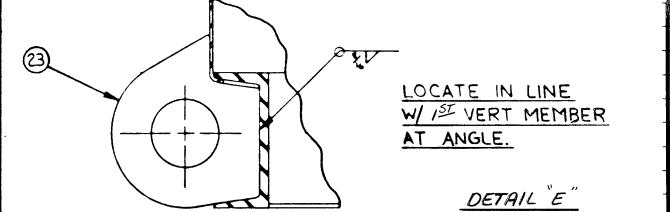
SECTION E-E



DETAIL "B"

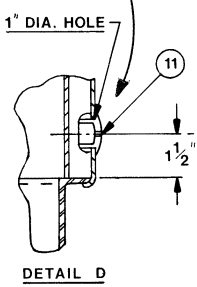


SECTION C-C
THERMOSTAT CONTROL WELL @ 7:30 POSITION

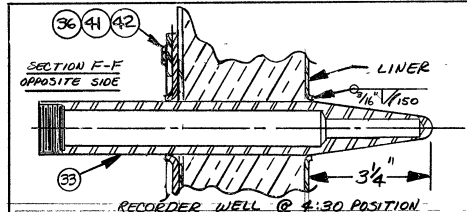


DETAIL "E"

- NOTE:
- 1. FINISH: INSIDE 150, WELDS GRD. & POL. WITH 150 GRIT.
 - 2. OUTSIDE PRIME PAINTED.
 - 3. OUTSIDE WRAP MIN. CIRC. - 473 5/8" (37' 5 5/8") AT ANY POINT AFTER LAP WELDING.
 - 4. EST. EMPTY WGT. - 14,900 LBS.
 - 5. SEE D-22438 DRWG. FOR LOCATION OF SADDLES.
 - 6. ITEMS * 20, 21, 22 ARE USED FOR RAIL SHIPMENT.
 - 7. ALL ISOLATION SEALS TO BE SEALED W/ LATEX CAULK, SILICONIZED ACRYLIC.
 - 8. DIMPLE JACKET 125 SQ. FT., TYPE R.F. (FFNH₂) WORKING PRESSURE 150 P.S.I.G. @ 100° F.



DETAIL D



SECTION F-F
OPPOSITE SIDE

RECORDER WELL @ 4:30 POSITION

ITEM NO.	PART NO.	DESCRIPTION	MATERIAL SPEC.	NO. REQD.
ORDER NO. 86-D-33261-B		FINAL, ASS'Y., SILO, 15,000 GAL., 144" I.D., 18'-0" STR.		
NO. REQD. 1				
REV.	DATE	DO NOT SCALE DRAWING		
A		TOLERANCE UNLESS SPECIFIED		
B		FRACTION - ± 1/16		
C		DECIMAL - ± .005		
D		ANGULAR -		
E		SCALE NONE		



DRWN. <i>MH</i>	CHECKED	APR.
DATE 10-17-85	DATE	DATE
016	C 102470	REV.