

Frick Screw Compressor Package – 200 HP

Mfg: Frick

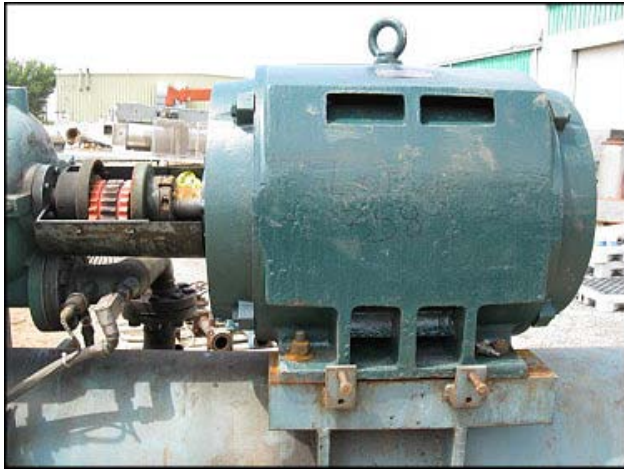
Model: RWB40

Stock No: MDPK358

Serial No: 1615DHR 4V0DX2965

Frick Screw Compressor Package. Model: RWB40. Serial No: 1615DHR 4V0DX2965. Refrigerant: last used with ammonia(R-717) producing 140 tons at 161.5 bhp with a 20°F suction temperature, 95°F condensing temperature, and 10°F liquid subcooling. Compressor model: RWB40, serial no: 1615DHR4V0DX2965, Vi:2.4, max. inlet pressure: 120 psig, max outlet pressure: 300 psig, Max inlet temperature: 100°F, max outlet temp. Toshiba World Energy Series Induction Motor: model: B2002VGG3U3, serial no. 80730647. Type: TIKK, 230/460V, 3540 rpm, 470/235 amp, service factor: 1.15, 60 Hz, 3-phase. Frick separator: shell / Head .375 in., MAWP: 300 PSIG at -20°F to 200°F. MAWT: -50°F. Material of construction: SA53-S-B. M&M Refrigeration control panel. Model: retrofit idr. Serial no. 00M-179-0230H, 120 V, 50/60 Hz. Hoffman Enclosures, Inc. Industrial issue No: A-1178, cat. No. C-SD30248/SPL. Enclosure 4,12. Overall dimensions: 11 ft. 7 in. L x 3 ft. 7 in. W x 6 ft. ½ in. H.









M & M REFRIGERATION

MODEL
RETROFIT IDR

SERIAL #
00M-179-0230H

VOLTAGE/FREQ.
120/1/ 50,60

MAX. FLA
36

Underwriters Laboratories Inc.® c

ENCLOSED INDUSTRIAL CONTROL PANEL
No. AN- 2887 13

- Type 1 Enclosure
- Wire w/copper stranded wire insulation
- I/O terminal tightening torque 6-14#/in

Hoffman Enclosures Inc.
2100 Hoffman Way
Archie, Mo 63801-1141
(781) 432-2211 Tel.
www.hoffmanenc.com

CATALOG NO. C-SD38248/SPL

UL LISTED

INDUSTRIAL CONTROL PANEL ENCLOSURE
ISSUE NO. A-1178

Enclosure Type 4-12 88273

To maintain the environmental rating of this enclosure, install in any openings only UL listed or recognized conduit tubes or approved devices with the same environmental rating as the enclosure. In compliance with the installation instructions of the device.

CONCEPT

FOR USE WITH INDUSTRIAL CONTROL EQUIPMENT ONLY
C.S.A. ENCLOSURE TYPE 4-12

Super-E

INDUSTRIAL MOTOR

CAT NO.	51635051			CONNECTION	
SPEC.	375614X637			LOW VOLTAGE	
FRAME	218T	H.P.	3 DP	6 5 4	
SER.	F594			9 8 7	
VOLTS	230/460			3 2 1	
AMP	9.2/4.6			LINE	
HP	1160			HIGH VOLTAGE	
PH	00	PH	3 CLASS B	6 5 4	
SER.	15	DES	E CODE J	9 8 7	
NEMA HP	20.2			3 2 1	
PARTS	WB-COMT			LINE	
FR. BR.	8209				

BALDOR
BALDOR ELECTRIC CO. SMITH AR

Erick Company

SHIELD	217	HEAD	15	FLAT
MAX. W.P.	20	IC	4	200
53-S-E 60000				
GOIL OR INNER CHAMBER				
SHIELD	RADIUS			
MAX. W.P.	R.C.M. (P.N.D.S)			
AT				
MIN. W.P.	WORK. TEMP.		P.S.D.	
MAX. W.P.	AT MIN. TEMP.			
MAT'L. SA.			F.S.	
A.S.M.E. UW 12-C YEAR BUILT 1979				
CANADIAN REG. NO.				

SERIAL NO. MC-79008