



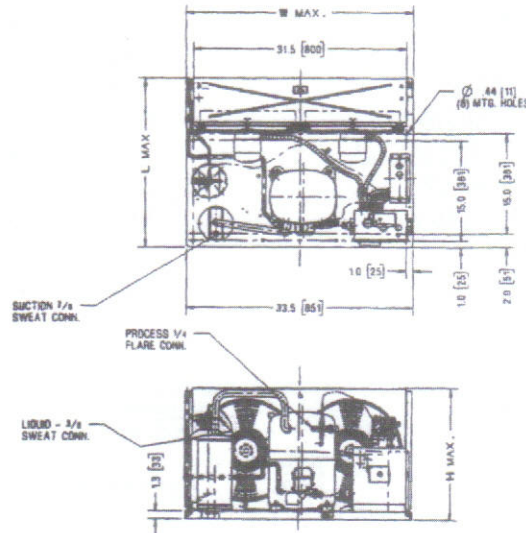
TECUMSEH HERMETIC CONDENSING UNITS

AVA4540EXNXM

April 1, 1997

Revision 2003

MODEL AVA4540EXNXM (B/M 2B3127-9) R22 3 HP AIR COOLED



NOTE: DIMENSIONING = INCHES (MILLIMETERS)

MO

Model	Dimensions				*Line Connections		Pumpdown 90°F 90% full	AIR (cfm)	Oil Charge (oz.)	Gross Wt. (lbs.)
	L	W	H	CH	Suction	Liquid				
AVA4540EXNXM	25.0	33.6	19.5	N/A	7/8 S	3/8 S	13.8#	1630	55	221

*F=Flare, S=Solder, RF or RS = Rotolock with Flare or Solder Connections

Factory Charge: 20 psig nitrogen - MUST BE EVACUATED

60 Hertz Performance

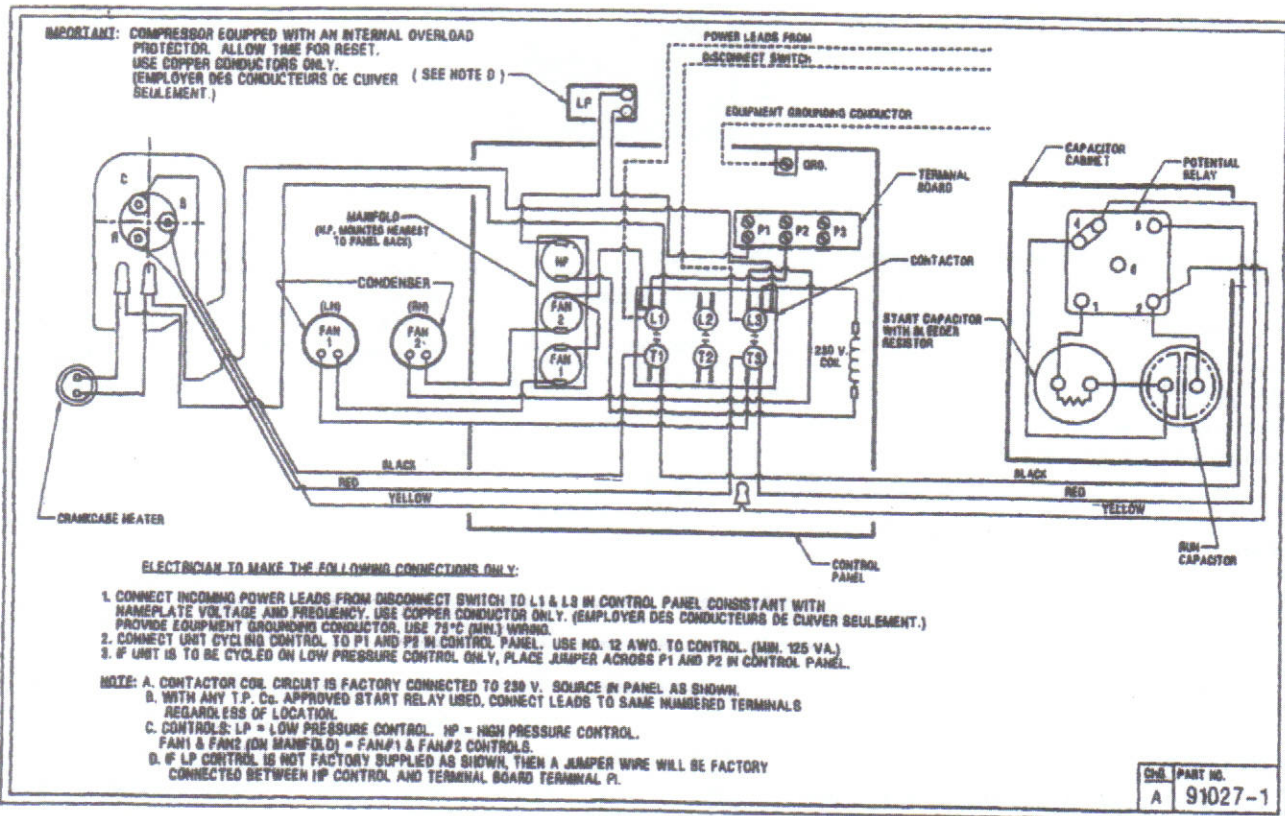
Approved Evap. Range		Ambient											
		80°F			90°F			100°F			110°F		
		°F	PSIG	BTUH	Watts	Head	BTUH	Watts	Head	BTUH	Watts	Head	BTUH
10	32.8	21403	2978	198	19641	3064	225	17328	3095	257	15487	3131	290
15	37.7	24192	3159	207	22233	3257	235	19833	3314	266	17919	3365	300
20	43.0	27028	3441	214	24548	3543	243	22376	3636	274	20218	3724	309
25	48.7	30086	3635	224	27485	3756	253	25079	3860	284	22710	3972	320
30	54.8	33213	3841	234	30479	3981	263	27830	4098	296	25248	4230	331
35	61.4	36408	4059	246	33531	4216	275	30628	4350	307	27830	4496	343
40	68.5	39673	4290	258	36641	4463	287	33473	4616	320	30458	4772	356
45	76.0	43006	4533	271	39809	4721	300	36366	4895	334	33131	5058	369
50	84.0	46408	4788	285	43035	4991	314	39306	5188	348	35849	5352	383
55	92.6	49879	5055	299	46319	5271	328	42294	5495	363	38613	5656	397

Based on 65°F Return Gas, 5°F Subcooling

SPECIFICATIONS AVA4540EXNXM

Nominal Voltage	<u>230/208-1</u>
Unit B/M	<u>2B3127-9</u>
Voltage Range	<u>253 to 197</u>
Min. Circuit Ampacity	<u>29.3</u>
Max. Fuse Size (Amps)	<u>50</u>
Compressor Model	<u>AVA5542EXN</u>
Comp. Bill of Material	<u>AV144ET-001</u>
RLA/LRA	<u>21.2/108.0</u>
ESP Overload	<u>Internal</u>
ESP Relay	<u>P82966</u>
Capacitor Cabinet	<u>AE1397-003</u>
Control Panel	<u>AC1390-2</u>
Start Capacitor	<u>85PS330D16</u>
Rating	<u>130-156MFD/330V</u>
Run Capacitor	<u>85PR440F28</u>
Rating	<u>40MFD/440V</u>
Fan Switch (s)	<u>84096-1</u>
	<u>84096-2</u>
High Pressure Switch	<u>84095-1</u>

Control	<u>84026-5 (LP)</u>
Contactor	<u>91014 (30AMP-3PH,230V)</u>
Fan Motor (OEM)	<u>810S050A99</u>
Fan RLA	<u>1.30 RLA</u>
Replacement Motor	<u>TFM502</u>
Fan Motor Bracket	<u>Grd. Mnt.</u>
Fan Blade	<u>51568-1 (2 req)</u>
Shroud	<u>70648-2</u>
Condenser	<u>K42-17</u>
Fan Guard	<u>70831 (2 req)</u>
Receiver Tank	<u>51081-1</u>
Receiver Tank Valve	<u>31581-1 (3/8" S) RL</u>
O' Ring Gasket	<u>30334</u>
Process Valve	<u>31583-1 (1/4" F PV)</u>
Optional Outdoor Enclosure	<u>TP-241D</u>
Crankcase Heater (If Inc)	<u>K31-9 Opt</u>
Accumulator	<u>TK00042000</u>
Unit Drawing	<u>SU1920</u>
Schematic or Elect. Drawing	<u>91027-1</u>



Unit Model	AVA4540EXNXM	Oil Charge (oz)	55
Unit Bill Of Material	2B3127-9	Oil Type	MO
Application	High +20 TO +45	Weight (lbs)	221
BTUH @ Rating Unit	View	Horse Power	3 HP
Pressure Low	N/A	Pressure High	N/A
Liquid Line Size	3/8S	Pump Down Capacity	13.8#
Suction Line Size	7/8S	Refrigerant	R-22
Air Flow	1630		
Voltage (60 Hz)	230/208-60-1	Voltage Range (60 Hz)	253 TO 197
Maximum Fuse Size	50	RLA/LRA	21.2/108
Start Capacitor Mfd/Volt	310-156MFD/330V	Run Capacitor Mfd/Volt	40MFD/440V
Fan RLA	1.3	Minimum Circuit Ampacity	29.3
Compressor Model	AVA5542EXN	Compressor Bill of Material	AV144ET-001
ESP Relay	P82966	Relay or Integral Relay Box	N/A
Fan 1	84096-1	Fan 2	84096-2
HP Switch	N/A	Pressure Control	HIGH 84095-1, LOW
Contactors	91014(30 AMP, 3PH/230V COIL)	Suction Valve	N/A
Receiver	51081-1	Receiver Valve	31581-1(3/8"S)
Condenser	K42-17	Base Valve	N/A
Fan Motor	TFM502	Fan Bracket	N/A
Blade	51568	Shroud	70648-2
Guard	70831	Teflon Gasket	30334
Accumulators	TK00042000	Start Capacitor	85PS330D16
Run Capacitor	85PR440F28	ESP Over Load	Internal
OEM Motor	N/A	Electrical Box	N/A
OEM Relay	N/A	OEM OverLoad	N/A
Capacitor Cabinet	AE1397-003	Control Panel	AC1390-2
Crank Case Heater	K31-9	Power Cord	N/A
Liquid Valve	N/A	Process Valve	31583-1(1/4")
Check Valve	N/A	Shut Off Valve	N/A
Fan Switch	N/A	Electrical Assy.	N/A
Rep. Fan Motor	TFM502		
Optional Enclosure	TP-241D	Crank Case Heater	K31-9
Unit Drawing	SU1920	Electrical Drawing	91027-1

Approved Evap. Range		Ambient Temperatures											
°F	PSIG	80°F			90°F			100°F			110°F		
		BTUH	Watts	Head	BTUH	Watts	Head	BTUH	Watts	Head	BTUH	Watts	Head
10	32.8	21403	2978	198	19641	3064	225	17328	3095	257	15487	3131	290
15	37.7	24192	3159	207	22233	3257	235	19833	3314	266	17919	3365	300
20	43	27028	3441	214	24548	3543	243	22376	3636	274	20218	3724	309
25	48.7	30086	3635	224	27485	3756	253	25079	3860	284	22710	3972	320
30	54.8	33213	3841	234	30479	3981	263	27830	4098	296	25248	4230	331
35	61.4	36408	4059	246	33531	4216	275	30628	4350	307	27830	4496	343
40	68.5	39673	4290	258	36641	4463	287	33473	4616	320	30458	4772	356
45	76	43006	4533	271	39809	4721	300	36366	4895	334	33131	5058	369
50	84	46408	4788	285	43035	4991	314	39306	5188	348	35849	5352	383
55	92.6	49879	5055	299	46319	5271	328	42294	5495	363	38613	5656	397

Based on 65°F Return gas, 5°F subcooling

Dimensions (In Inches)				*Line Connection	
Length	Width	Height	CH	Suction	Liquid
25	33.6	19.5		7/8S	3/8S

*F=Flare, S=Solder, RF or RS=Rotolock with Flare Or Solder Connections Factory charge:20 psig nitrogen-MUST BE EVACUATED 60 HZ Performance