

Frick Screw Compressor Package – 50 HP

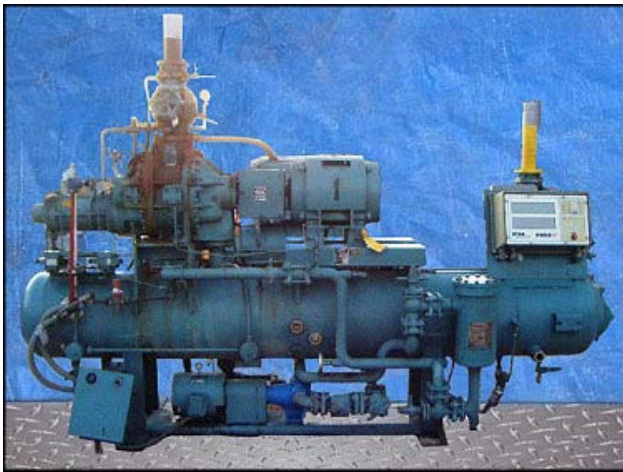
Mfg: Frick

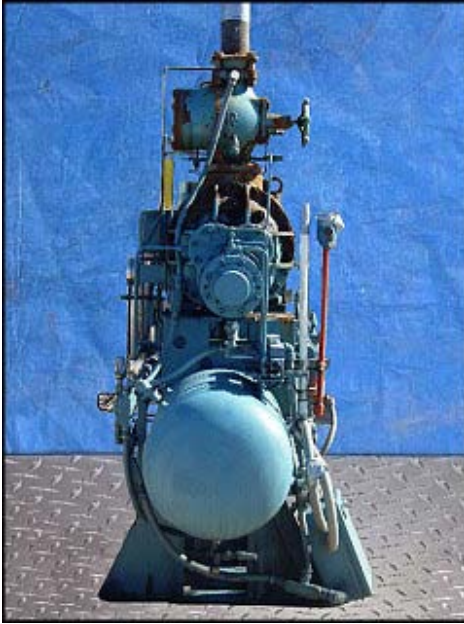
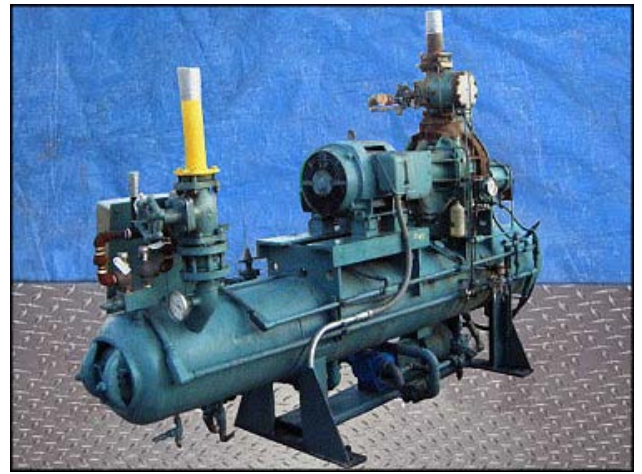
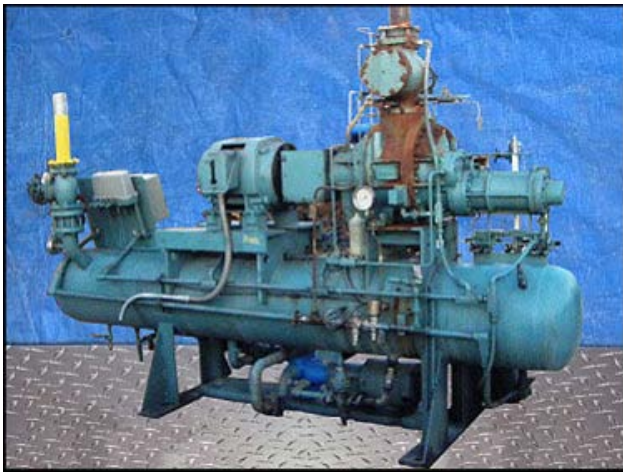
Model: RWB II 60

Stock No: PCNY01

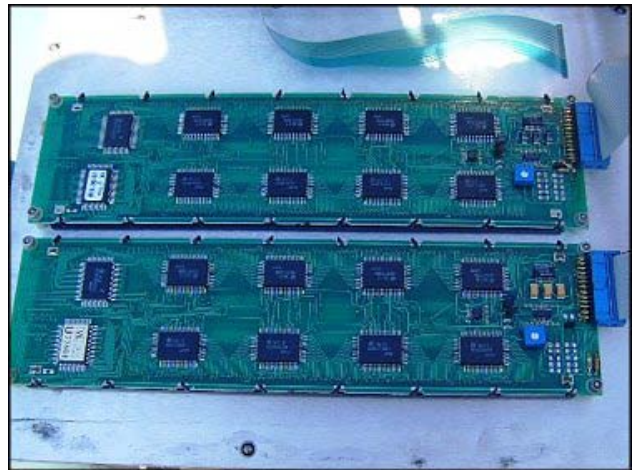
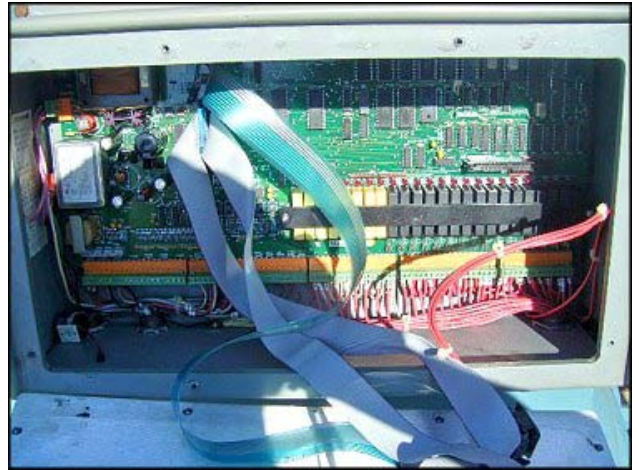
Serial No: S0141FFMFLHAA3

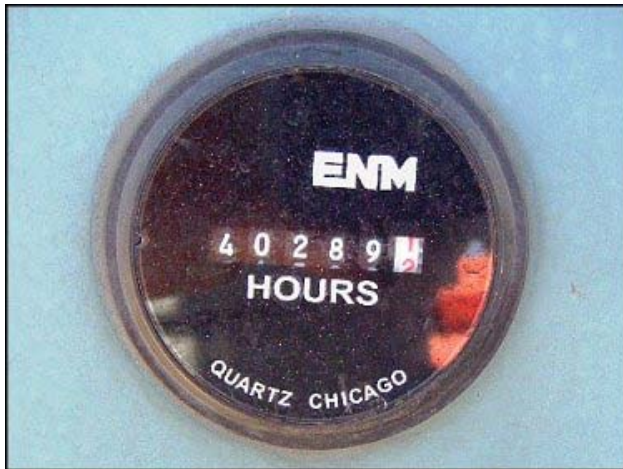
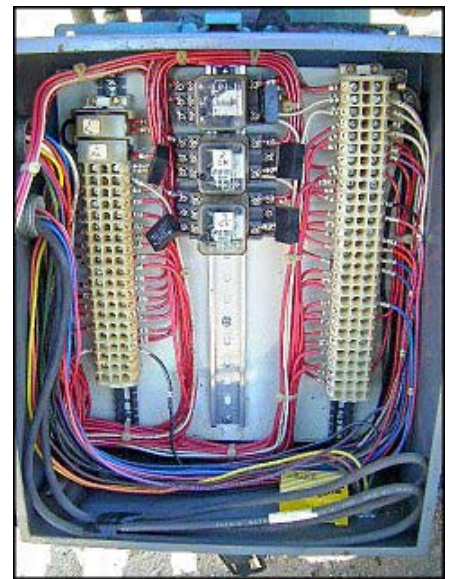
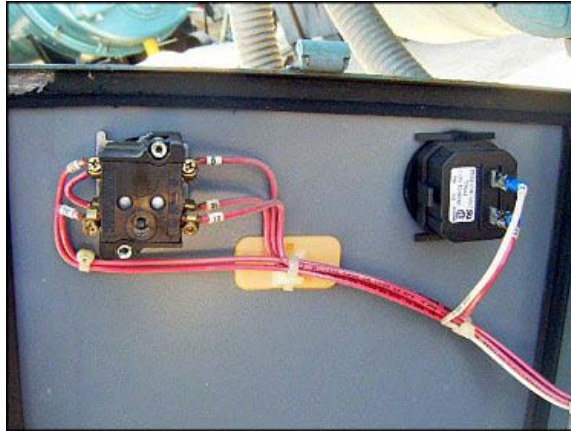
Frick RWB II 60 Screw Compressor Package. Model: RWB II 60. S/N: S0141FFMFLHAA3. Refrigerant: Last used with R-717 (Ammonia). Maximum speed: 3600 rpm. Frame: 324TS. Max design pressure: 300 psig. Vessel: Nat'l: 76098. Shell side MAWP: 300 psig @ -20 to 200° F. Toshiba high efficiency drive motor, Model: B0502 VLG3UD. S/N: 7600081, 50 hp, 3515 rpm, 230/460 V, 122/61 amps, 60 Hz. 3 phase. Oil separator: MAWP: 300 psig @ -20 to + 200° F. Viking oil pump model: AS4195, S/N: 11984750. Oil pump motor, 3 hp, 1160 rpm, 230/460 V, 9.7/4.8 amps, 60 Hz, 3 phase. Frick RWB II plus control panel, S.O: 262214. Inlet: (1) 4 in. dia. pipe. Outlet: (1) 3 in. dia. pipe. Inlets/Outlets have been capped. Overall dimensions: 11 ft. 10 in. L x 3 ft. 7 in. W x 8 ft. H. Compressor run time: 40289.1 hours. (ACN513).











FRICK MICRO PROGRAM

S.O. 262214 ITEM 27
 PROGRAM I.D. D DATE 12-01-87
 COMPRESSOR MODEL RWB II 60 N41
 REFRIG. R717 DUTY Boosted

PRE-LUBE OIL PUMP OR:
 FULL-TIME OIL PUMP OR:
 FULL CAPACITY, CYCLING OIL PUMP

MOTOR: 5.0 HP, 3/4 VOLTS, 50 5 CT

| Default Setpoints | CC PSIA | LPA PSIA | UPCD PSIA | LPA PSIG | UPCD PSIG | W/O % | W/O % |
|-------------------|---------|----------|-----------|----------|-----------|-------|-------|
| R717 H.S. | 40 | 20 | 16 | 215 | 225 | 100 | 100 |
| R82 H.S. | 40 | 20 | 16 | 200 | 210 | 100 | 100 |
| R717-22 RSTR | 20 | 5 | 3 | 110 | 102 | 100 | 100 |
| OTHER | | | | | | | |

BATTERY BACKUP P.C. DATA CODE
 AUTO CYCLE DUAL LID. INI
 REMOTE ALARM SPECIALS

AUX. 1 --- ALARM CR. CO NO. O.L. NC
 AUX. 2 --- ALARM OR. CO NO. O.L. NC

FRICK™
 ROTARY SCREW COMPRESSOR UNIT

UNIT MODEL NO. RWB II 60
 UNIT SER. NO. S0141FFMFLHAA31
 FRICK SALES ORD. 262214-07

REFRIGERANT R717
 MAX. SPEED RPM 3600
 MAX. DESIGN PRESSURE PSIG 300
 kPa

WAYNESBORO, PA. 17268

ROTARY SCREW COMPRESSOR
 MODEL / SERIAL NO. FDSH163S1159A

REFRIGERANT R717
 VOL. RATIO 2 2-5 0
 MAX. SPEED RPM 4500
 MAX. DESIGN PRESSURE PSIG 362
 kPa 2500

COMPRESSOR MFGD. IN SWEDEN
 PATENTS LICENSED FROM
 SWEDISH MOTOR MASKINER
 AB, TROVÖ, SWEDEN.

ATL. BOARD SERIAL NO. _____
 FRICK COMPANY WAYNESBORO, PENNA.

SHELL CHAMBER

MAX. ALLOW. WORK. PRESS. 300 PSIG
 AT - 20 TO + 200 °F
 MIN. ALLOW. WORK. TEMP. _____ PSIG
 MAWP AT MIN. TEMP. _____

TUBE, COIL OR INNER CHAMBER

MAX. ALLOW. WORK. PRESS. _____ PSIG
 AT _____ °F
 MIN. ALLOW. WORK. TEMP. _____ PSIG
 MAWP AT MIN. TEMP. _____

S0141FFMFLHAA31
 12-01-87
 YEAR BUILT

