

2002 Frick RWF 480 E Screw Compressor Package – 1,167 HP

Mfg: Frick

Model: RWF 480 E

Stock No: RBFM850

Serial No: 0010VFMCTIAC03

2002 Frick Screw Compressor Package. Model: RWF 480 E. S/N: 0010VFMCTIAC03. Sales order: 21367303000. Nominal capacity with ammonia, R-717: 1,042 tons at 1,114 bhp with a 20°F suction temperature, 95°F condensing temperature, 10°F liquid subcooling and 10°F suction superheat. Adjustable Vi setting: 2.2 – 5.0. Displacement: 2,864 cfm. 2006 Frick rotary screw compressor, Model/Serial: SGC28210100. Motor: 1167 hp, 2300/4000/4160 V, 3 ph. Frick oil separator, MAWP: 300 psi at 250°F, MDMT: -20°F at 300 psi. Frick economizer system. Frick Quantum control panel. Previously installed at Bryan Foods in 2002 and removed from service in April 2007. Hours run 20,776. Overall dimensions: 17 ft. L x 8 ft. 6 in. W x 9 ft. 1 in. H.

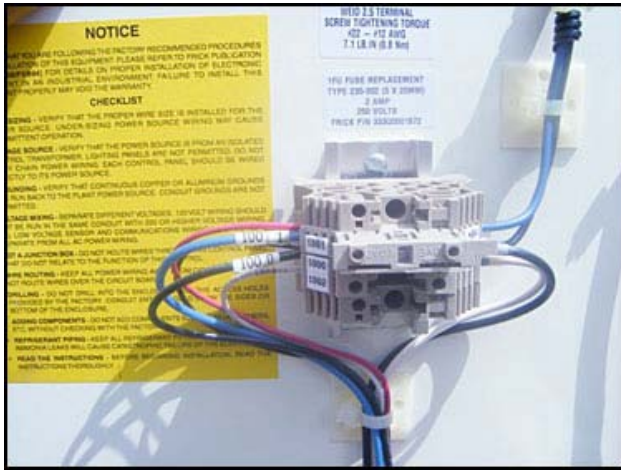
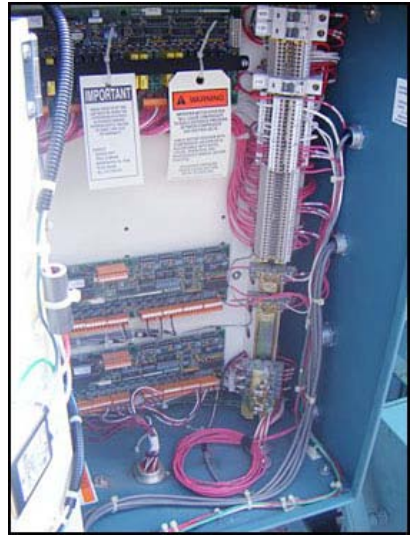
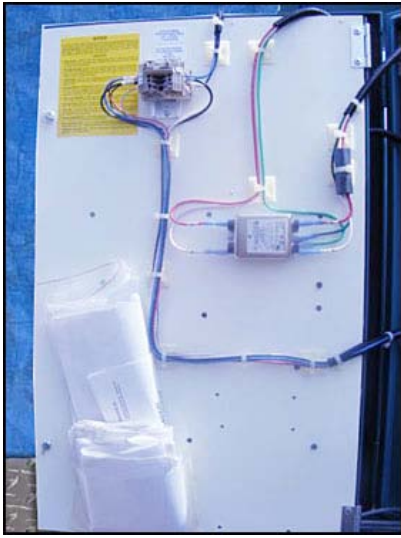
Square D ISO-FLEX® controller information:

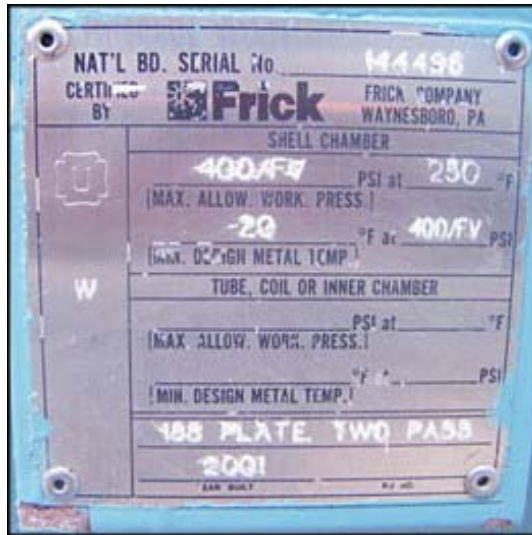
2002 Square D ISO-FLEX® Medium Voltage Controller. Model: 4. Class E2, Factory Order No. 17-15018462-004, Category no. AG44D, 3 phase. Nominal system voltage: 4000 / 4160 V, rated maximum voltage 5kv, continuous current 360 amps, control voltage 120 vac volts. Impulse withstand: 60 kV, Horizontal bus rating: 1200A. Power supply: Control voltage: 120 VAC, 60 Hz, 3 phase. Features include: front and rear access, and a NEMA 1 indoor, painted and gasketed enclosure. Inside enclosure dimensions: 5 ft. 11 in. L. x 2 ft. 7 in. W. x 8 ft. 3 in. H. Overall dimensions: 6 ft. L x 3 ft. W x 8 ft. 8 in. H. Run Hours: 10838.0

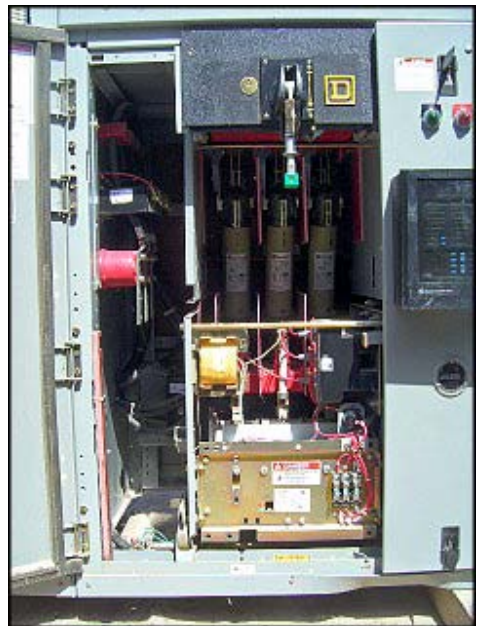


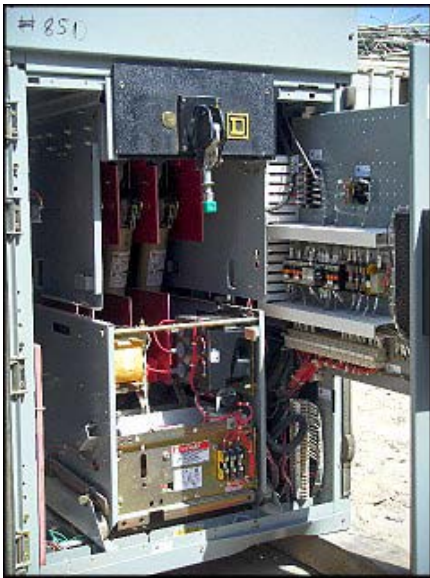












ISO-flex[®] MODEL 4
MEDIUM VOLTAGE
CONTROLLER CLASS E2

FACTORY ORDER NO.	17-15018462-004
CATALOG NO.	AG44D
MANUFACTURE DATE	2/02
RATED MAXIMUM VOLTAGE	KV 3
IMPULSE WITHSTAND (BIL)	KV 80
FREQUENCY	HZ 60
NUMBER OF PHASES	3
CONTINUOUS CURRENT	A 360
INTERRUPTING RATING	KA SYM 50
HORIZONTAL BUS RATING	A 1200
POWER FUSE SIZE	HRT
CONTROL VOLTAGE	V 240VAC

SQUARE D COMPANY
 MAYRINA, TN, USA
 48330-021-01

Cutler-Hammer

CLS MOTOR CIRCUIT
 CURRENT 1.1 (1) AMP
 HIGH VOLTAGE FUSE

5ACLS-0R

5.08 MAX KV
 200(SR) AMP
 50160 HZ 151D9336D1
 MAX INT 50 KA SYM
 MIN INT 740 AMP 67M

For Replacement Call 1-800-400-0000
Cutler-Hammer Inc.
 Pittsburgh, PA 15109
 www.ccs.square-hammer.com

SQUARE D

TYPE SL50W430 MODEL C AC CONTACTOR

MAX COVT. UNITS	400	PHASES	3	BIL	60KV	CONTROL VA INRUSH 600 SEAL 30
TRIP CAPACITY	8500 A	CONTROL CIRCUIT VOLTS	120	AT HZ 60		
SYSTEM VOLTS	4160	DROPOUT TIME	130 mSEC	ALTYITUDE - 1000m to +2000m		
G.D. GS20348-01	COMPT.	4F				

MADE IN U.S.A. H.P. 787640H01

If it has been damaged.

4A35975H01

SQUARE D



TYPE SL50W430 MODEL C AC CONTACTOR

MAX CONT. AMPS	400	PHASES	3	BIL	60KV	CONTROL VA INFLUSH 600 SEAL 30
MAX INTAKE CAPACITY	8500	A		CONTROL CIRCUIT VOLTS	120	AT H2 60
SYSTEM VOLTS	4160	DROPOUT TIME	250	ALTITUDE	- 1000m to + 2000m	
U.S. GS20348-02		COMPT.	5B			

MADE IN U.S.A.

N.P.7875440H01

- DO NOT modify or disassemble this device
- Use only factory authorized replacement parts.
- DO NOT install or energize this device if it has been damaged.

4A35975H01

SQUARE D



TYPE SL50W230 MODEL C AC CONTACTOR

MAX CONT. AMPS	200	PHASES	3	BIL	60KV	CONTROL VA INFLUSH 600 SEAL 30
MAX INTAKE CAPACITY	8500	A		CONTROL CIRCUIT VOLTS	120	AT H2 60
SYSTEM VOLTS	4160	DROPOUT TIME	250	ALTITUDE	- 1000m to + 2000m	
U.S. GS20348-02		COMPT.	30			

MADE IN U.S.A.

N.P.7875440H01