

North Star Flake Ice Machine

Mfg: North Star Ice

Model: M40-89-C

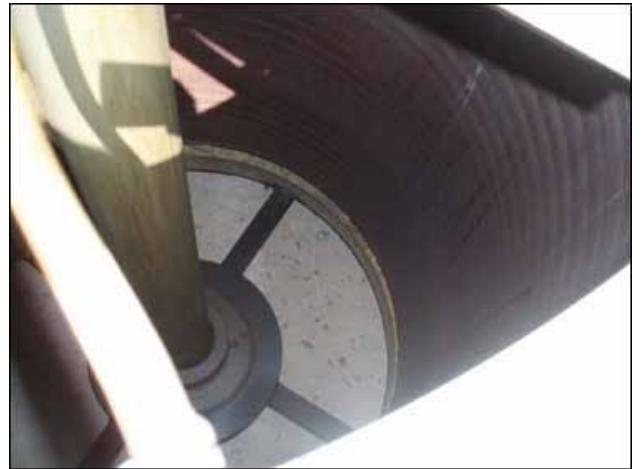
Stock No.: RBFM974B.5

Serial No.: 5781

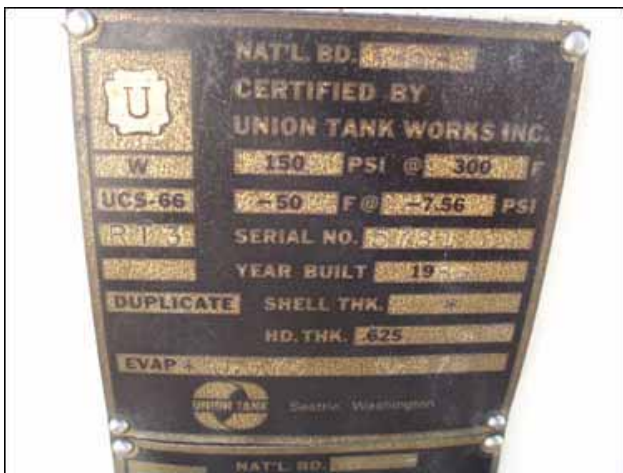
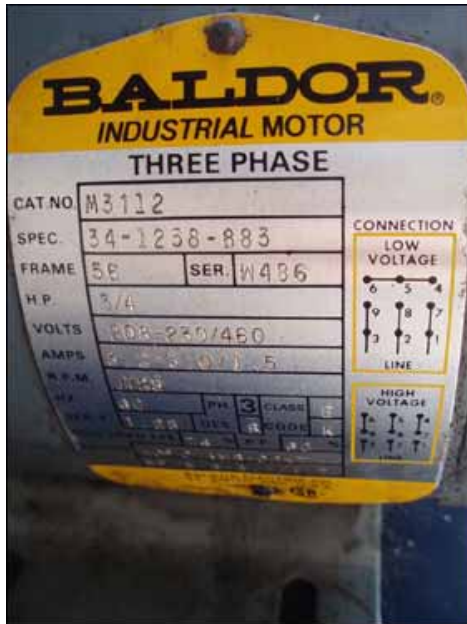
North Star Flake Ice Machine. Model: M40-89-C. S/N: 5781. Approximate capacity: 22.8 tons per day. Carbon steel freezing surface area: 40 sq. ft. Evaporator, MAWP: 150 psig @ 300°F, MDMT: 50°F @ -7.55 psi, head thickness: 0.625/0.750 in., shell thickness: 0.375/0.375 in. Union Tank Works Inc. evaporator. S/N: 5781. Nat'l Bd: 3668. MAWP: 150 psi @ 300°F. MDMT: -50°F @ -7.56 psi. Head thickness: 0.625 in. Shell thickness: 0.375 in. Union Tank Works Inc. accumulator. S/N: 5781A. MAWP: 150 psi @ 650°F. MDMT: -50° @ -7.56 psi. Head thickness: 0.187. Shell thickness: 0.250. Electra Dresser speed reducer, Model: 6E 372337 YG, ratio: 60, rpm out: 28.75 (final). Baldor Motor, 3/4 hp, 1725 rpm, 230/460V, 2.2/1.1 amps, 60 Hz, 3 phase. Surge tank: Inside straight wall dimensions: 17 in. dia. x 3 ft. 1 in. L. The model M-40 makes ice from fresh water, seawater or other liquids, and offers continuous harvesting with no defrost cycles. Inlets: (1) 1-1/2 in. dia. water infeed, (1) 1 in. dia. liquid refrigerant feed line, (1) 3/4 in. dia. liquid refrigerant feed line. Outlets: (1) 3 ft. 2 in. dia. ice discharge, (1) 4 in. dia. waste water discharge port, (1) 3/4 in. dia. FNPT drain port, (1) 3 in. dia. liquid refrigerant suction port. Overall dimensions: 7 ft. 8 in. L x 5 ft. 2 in. W x 6 ft. 9 in. H.(ACN453-89).

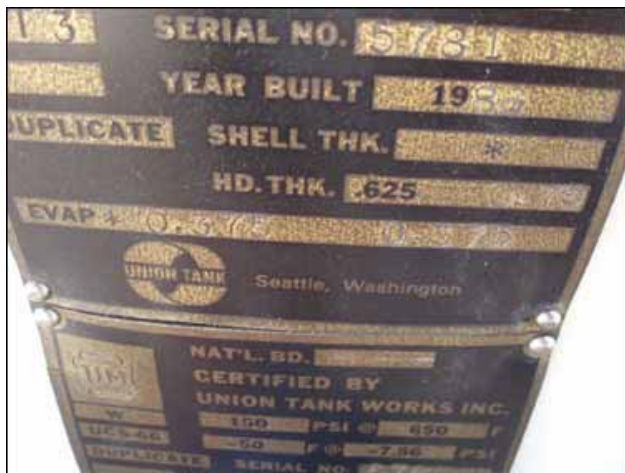
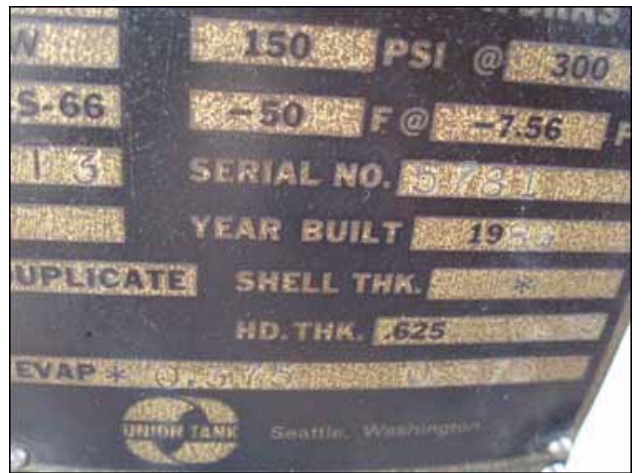
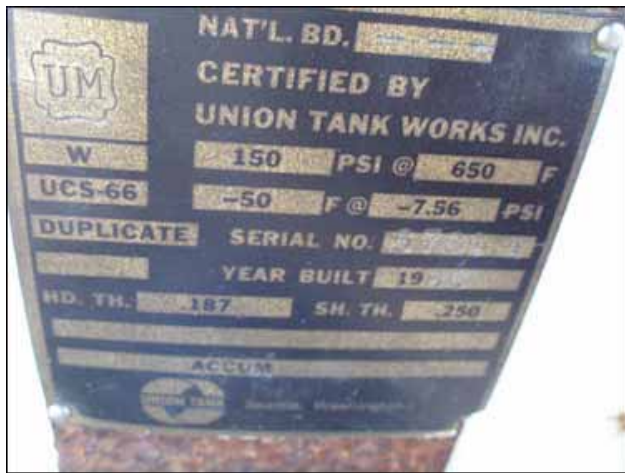






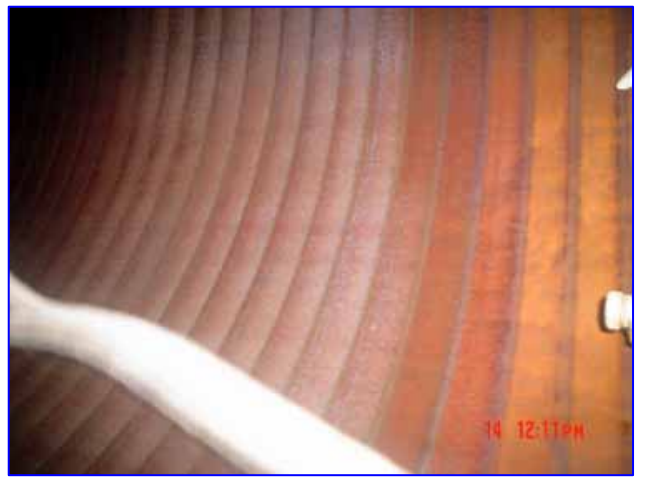
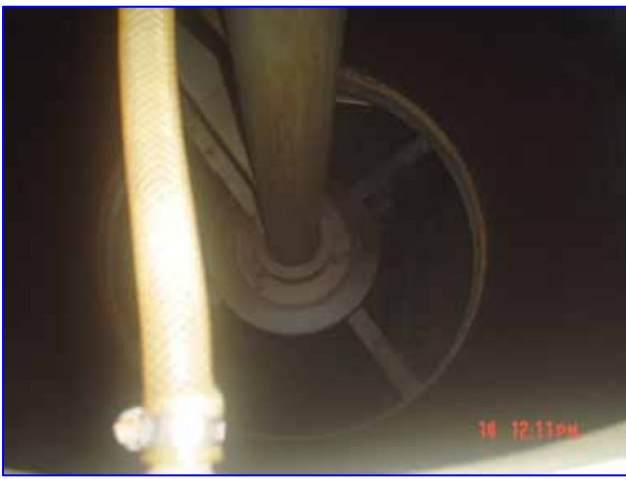












North Star flake ice is the most effective and economical choice for your cooling needs:

Faster cooling: North Star flake ice has more than 17,000 square feet of surface area per ton of ice, providing greater cooling efficiency than any other ice. Other types of ice, such as tube, plate, shell or crushed, offer only 4,250 to 13,500 square feet of cooling surface area per ton of ice.

Thorough product mixing: North Star flake ice melts rapidly to dissipate heat and add moisture to mixtures, aiding the blending process, and will not damage blending equipment.

Better product coverage: Flake ice is formed in flat flakes which flow more freely and provide greater contact area than any other type of ice.

Greater product protection: North Star flake ice remains dry, packs well and cushions products against damage. Its flat shape will not create indentations in perishable products.

Easier storage and distribution: North Star flake ice is completely dry, so it will not rapidly fuse together in a low-temperature storage bin or clog screw conveyors or pneumatic delivery systems.

Cost-effective production: Flake ice is the most economical ice to produce, requiring only 1.3 tons of refrigeration per ton of ice from 60°F (16° C) water.

Cooling Surface Area Per Ton of Ice

