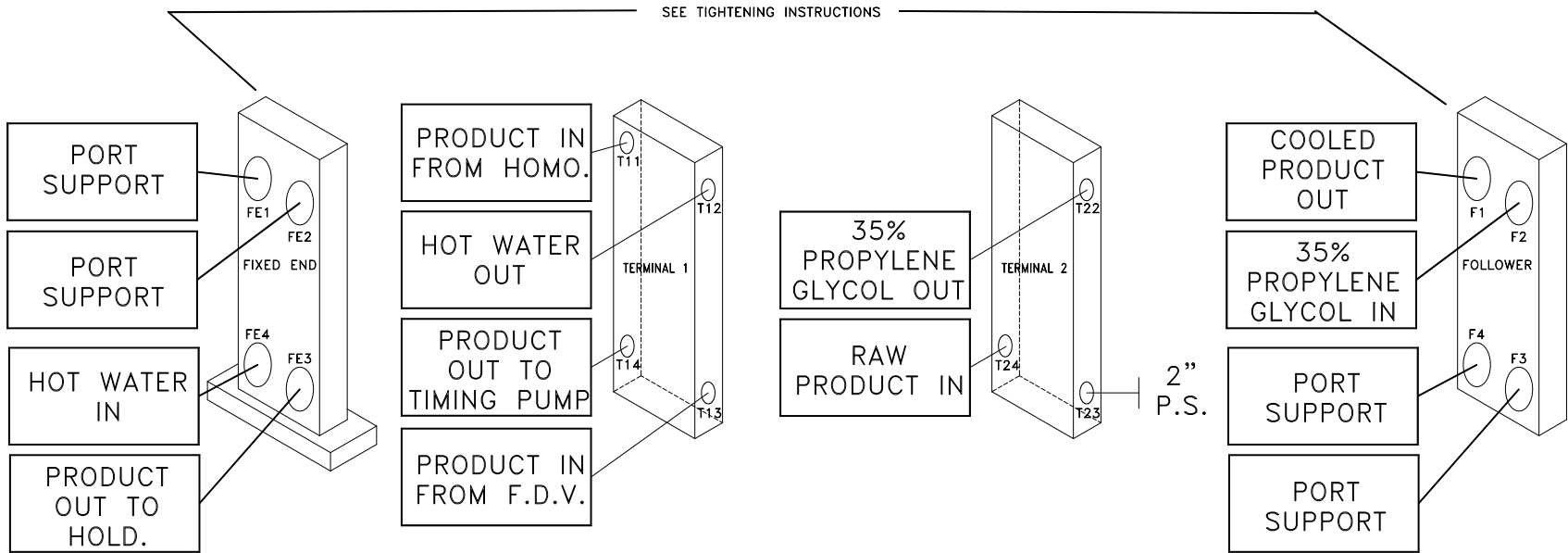


MODEL: APV CR5 (108" RAILS), W/ PRO5 PLATES & HYDRAULIC TAKE-UP, PLATE HEAT EXCHANGER



SEE TIGHTENING INSTRUCTIONS

DUTY			
FLUID	FLOW	TEMP.	PRES. DROP
40% SWEET CREAM	3000 GPH	40°-157°F	18 PSI
		157°-178°F	10 PSI
		178°-61°F	18 PSI
		61°-35°F	15 PSI
*85% REGENERATION			
SOUR CREAM	3000 GPH	40°-188°-35°F	N/A
HOT WATER	110 GPM		12 PSI
35% PROPYLENE GLYCOL	140 GPM	N/A	10 PSI
-CIP FLOW RECOMMENDED 110 GPM @ 78 PSI DROP-			

TIGHTENING INSTRUCTIONS

THIS MODEL HEAT EXCHANGER IS DESIGNED TO OPERATE WITH METAL TO METAL CONTACT BETWEEN PLATES. THIS MACHINE MUST ALWAYS BE TIGHTENED TO A "DEAD HARD" CONDITION BEFORE OPERATION. THE PLATE DIMENSION SHOWN IS NOMINAL ONLY. TOLERANCES IN PLATES CAN VARY ±0.005" PER PLATE. PIPING TO FOLLOWER AND TERMINAL PORTS MUST ALLOW FOR FREE MOVEMENT WHEN FRAME IS OPENED.

TIGHTEN UNIT TO -- START 63" -- MINIMUM 61 7/8" -- OVERALL AS MEASURED FROM THE INSIDE OF THE FIXED END TO THE INSIDE OF THE FOLLOWER.

GASKETS ON PLATES FACE THE: FIXED END

PRO5 PLATES	
316 SS, 0.9MM THICK W/ NITRILE	
KL32-1	R12-8
KL33-2	R13-6
L13-1	R21-2
L21-5	R21D-4
L22-3	R31-7
L31-1	R-87
L33-5	
L-99	
"D" DENOTES 1/8" DRAIN HOLE	
L/R = L11/R11	
TOTAL = 231 PLATES	

CONNECTIONS
FIXED END & FOLLOWER: 4" BEVEL SEAT
TERMINALS: 3" BEVEL-SEAT
PRESSURE SWITCH: 2" BEVEL-SEAT

HOLD UP
PRODUCT: 128 US GAL
HOT WATER: 13 US GAL
35% PROPYLENE GLYCOL: 24 US GAL

CAUTION

THIS UNIT MUST BE COOLED BELOW 90°F AND RELIEVED OF PRESSURE PRIOR TO OPENING.

AGC ENGINEERING

WESTERN FACTORY EASTERN FACTORY
8969 SE 58TH AVENUE 8509 QUARRY ROAD
PORTLAND, OR 97206 MANASSAS, VA 20110
800.715.8820 703.257.1660
503.774.7342 800.825.8820
FAX 503.774.2550 FAX 703.330.7940

DATE: 11/25/98

ENGINEER: BOHN

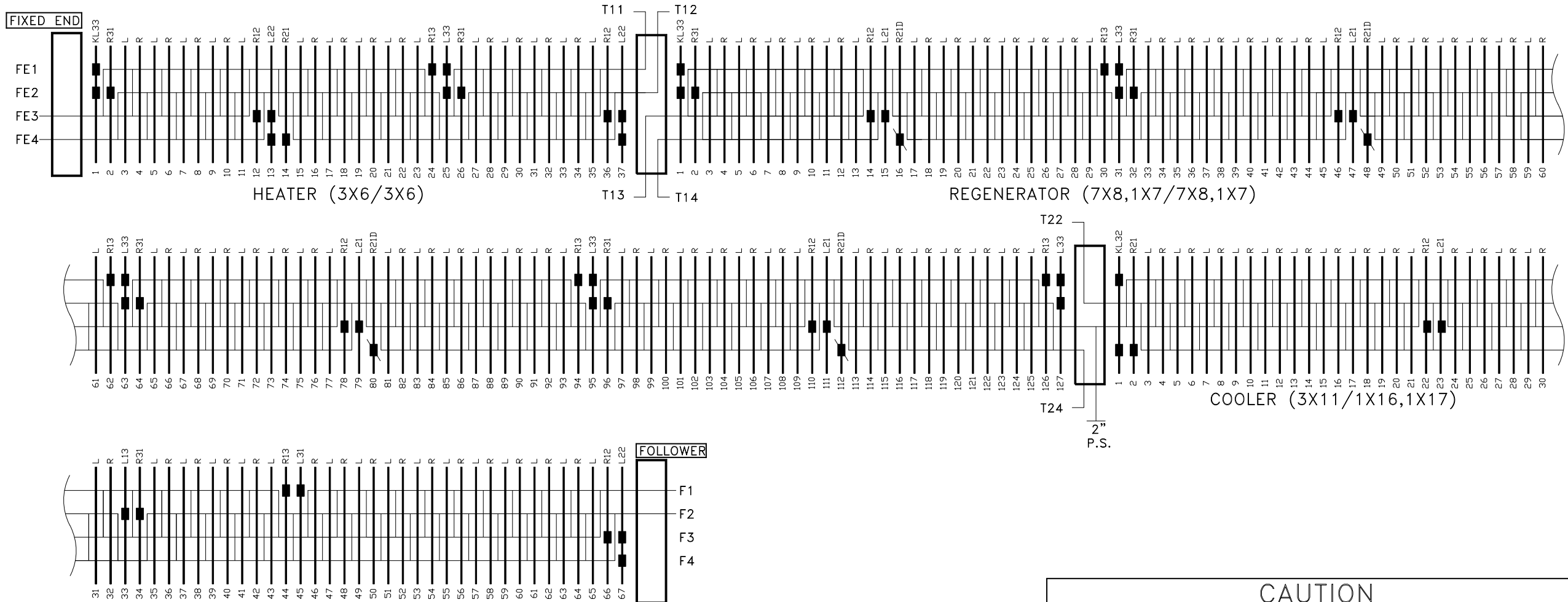
CHECKED BY: SMITH

SERIAL NO.: D-1498

REV.	DATE	DESCRIPTION
A	06/24/99	REVISED STREAMING IN HEATER AND REGENERATOR

DRAWING NUMBER: **AGC-D-1498-A**
SHEET 1 OF 3

MODEL: APV CR5 (108" RAILS), W/ PR05 PLATES & HYDRAULIC TAKE-UP, PLATE HEAT EXCHANGER



CAUTION

THIS UNIT MUST BE COOLED BELOW 90°F AND RELIEVED OF PRESSURE PRIOR TO OPENING.

AGC ENGINEERING

WESTERN FACTORY EASTERN FACTORY
8969 SE 58TH AVENUE 8509 QUARRY ROAD
PORTLAND, OR 97206 MANASSAS, VA 20110
800.715.8820 703.257.1660
503.774.7342 800.825.8820
FAX 503.774.2550 FAX 703.330.7940

DATE:
11/25/98

ENGINEER:
BOHN

CHECKED BY:
SMITH

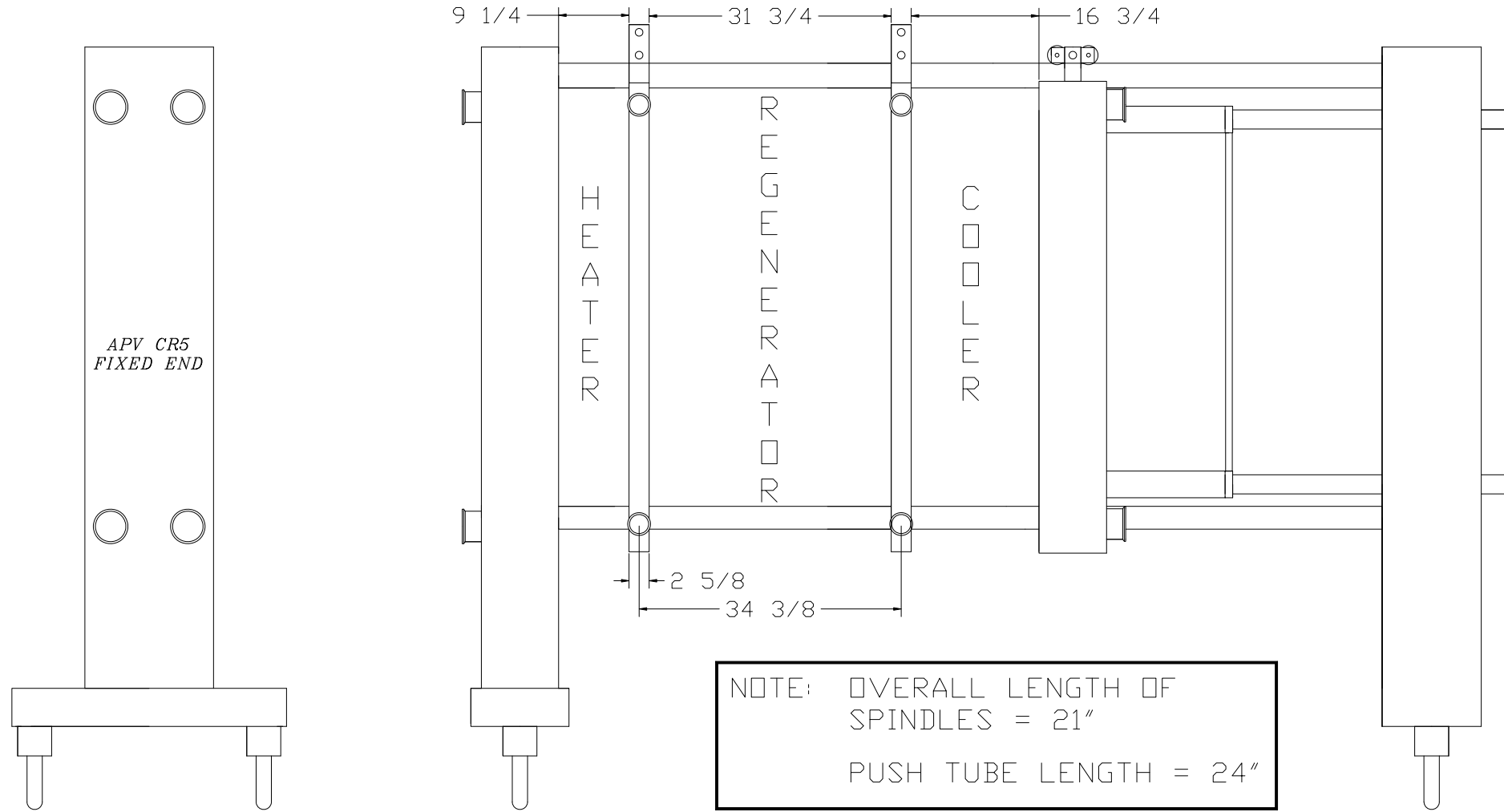
SERIAL NO.:
D-1498

REV.	DATE	DESCRIPTION
A	06/24/99	REVISED STREAMING IN HEATER AND REGENERATOR

DRAWING NUMBER:
AGC-D-1498-A

SHEET 2 OF 3


MODEL: APV CR5 (108" RAILS), W/ PR05 PLATES & HYDRAULIC TAKE-UP, PLATE HEAT EXCHANGER



NOTE: OVERALL LENGTH OF SPINDLES = 21"
 PUSH TUBE LENGTH = 24"

CAUTION
 THIS UNIT MUST BE COOLED BELOW 90°F AND RELIEVED OF PRESSURE PRIOR TO OPENING.

REV.	DATE	DESCRIPTION
A	06/24/99	REVISED STREAMING IN HEATER AND REGENERATOR



AGC ENGINEERING

WESTERN FACTORY 8969 SE 58TH AVENUE
 PORTLAND, OR 97206 800.715.8820
 503.774.7342 FAX 503.774.2550

EASTERN FACTORY 8509 QUARRY ROAD
 MANASSAS, VA 20110 703.257.1660
 800.825.8820 FAX 703.330.7940

DATE: 11/25/98

ENGINEER: BOHN

CHECKED BY: SMITH

SERIAL NO.: D-1498

DRAWING NUMBER:
AGC-D-1498-A
 SHEET 3 OF 3