

## 1997 Evapco PMCB Evaporative Condenser - 250 ton

Mfg: Evapco

Model: PMCB250

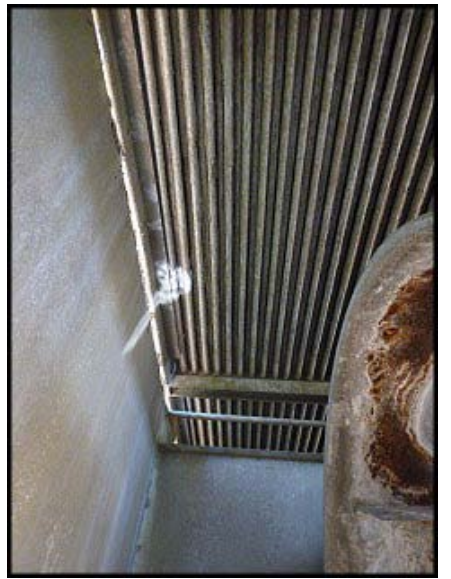
Stock No: SPMA01.20

Serial No: 977753W

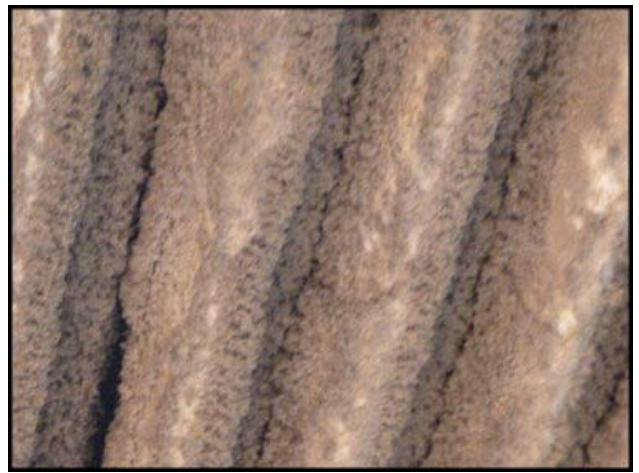
1997 Evapco Evaporative Condenser. Model: PMCB250. S/N: 977753W. Nominal capacity: 250 tons using R-22 at 40°F suction, 105°F condensing and 78° wet bulb. Rated at 180 tons using R-717 at 20°F suction, 96.3°F condensing and 78°F wet bulb. (1) 10 hp fan motor, (1) 5 hp fan motor, and (1) 3 hp pump motor. Electrical requirements: 208-230/460V, 60 Hz, 3 phase. Shipping weight: 10480 lbs. Overall dimensions: 18 ft. 9 in. L x 6 ft. 4 in. W x 11 ft. 2 in. H.











**evapco**

**EVAPCO WEST, INC.**  
 1900 ALMOND AVE. MADERA, CA. 93637  
 (209) 673-2207

MFG. UNDER ONE OR MORE OF THE FOLLOWING U.S. PATENTS:  
 4500330, 4379694, 4755331, 5124007 MADE IN U.S.A.

MODEL NO.	PMCB250	SERIAL NO.	377753M
BELT NO.	B116	COIL TEST PRESSURE	P.S.I.G.

FOR EVAPCO AUTHORIZED PARTS AND SERVICE, CONTACT MR. GOODTOWER\*  
 CLIMATEC, INC.  
 10802 N. 23rd Ave.  
 Phoenix, AZ 85029  
 Phone: (602) 944-3330

Mr. Goodtower\*

