

1994 Imeco Cooling Tower – 197 Tons

Mfg: Imeco

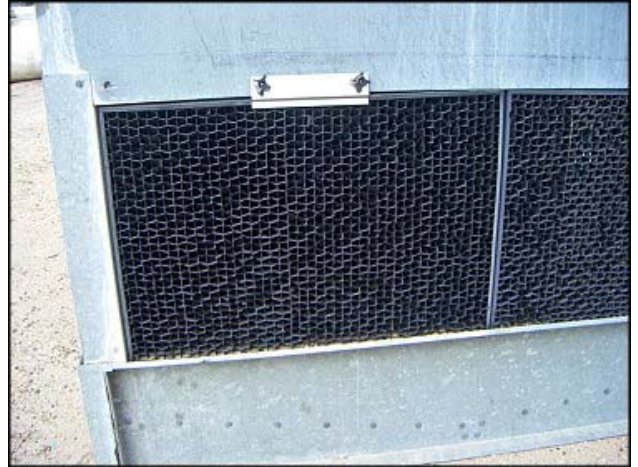
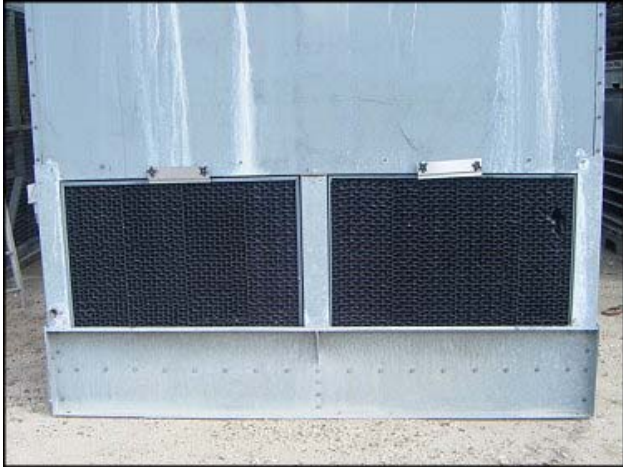
Model: IMC 809-190-1-15

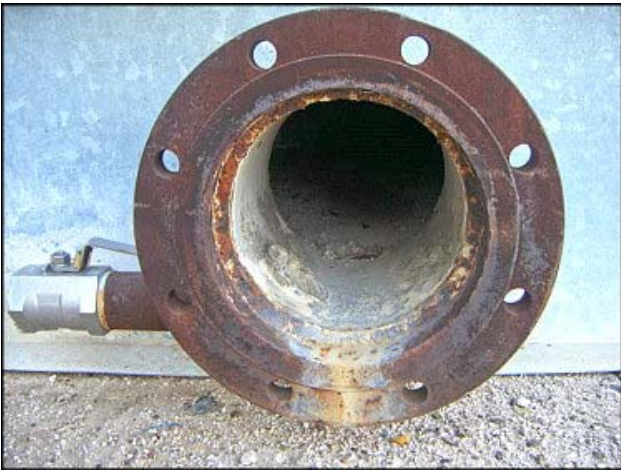
Stock No: TACJ0508.10

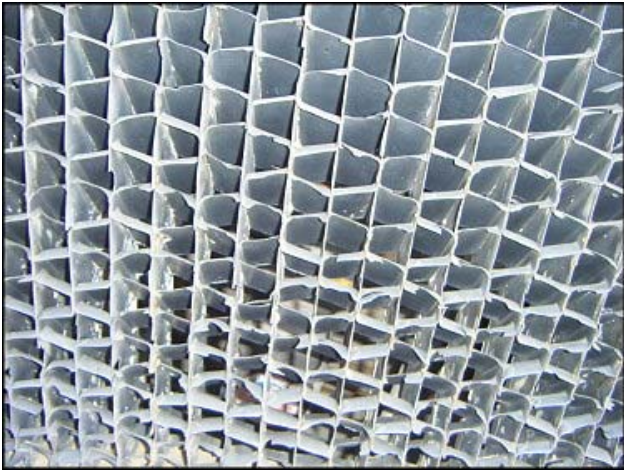
Serial No: 5579-1

1994 Imeco Cooling Tower. Model: IMC 809-190-1-15. S/N: 5579-1. Nominal capacity: 197 tons or 589 gpm at 95°F in and 85°F out with a 78°F degree wet bulb with a pressure drop of 2.4 PSI at the water inlet. Fan motor: (1) 15 HP 3 phase 60 Hz 230/460 V 38/19 A 1760 rpm. Inlet port: 8 in. Outlet port: 8 in. flange with a 2 in. female NPT valve. (1) 3-1/2 in. NPT male outlet.. Overall dimensions: 8 ft. 2 in. L x 9 ft. 10 in. W x 9 ft. 11in. H.









Imeco®
 3820 Highway 26 South
 Polo, Illinois 61064
 PH: (815) 946-2351
 FAX: (815) 946-3409

MODEL			SERIAL		
IMC 809-190-1-15			5579-1		
QTY.	MTR. HP	VOLTAGE	FLA	DATE MANUFACTURED	
1	15	460-3-60	19	9-22-94	
QTY.	MTR. HP	VOLTAGE	FLA	PLANT LOCATION	
				POLO IL	
QTY.	MTR. HP	VOLTAGE	FLA		
MAX. PRESS.		REFRIGERANT		BELT SIZE	
10PSI		WATER		3GBB158	

BALDOR®
 INDUSTRIAL MOTOR

THREE PHASE

CAT. NO.	M2333T			CONNECTION	
SPEC.	07H203W269			LOW VOLTAGE	
FRAME	254T	SER.	F894	6 5 4	
H.P.	15	TE		9 8 7	
VOLTS	230/460			3 2 1	
AMPS	38/19			LINE	
R.P.M.	1760			HIGH VOLTAGE	
HZ	60	PH	3	CLASS	F
SER. F.	1.15	DES	B	CODE	H
NEMA NOM. EFF.	90.2 %		P.F.	82 %	
RATING	40C AMB-CONT			LINE	

BALDOR ELECTRIC CO.
 FT. SMITH, ARK.
 MFD. IN U.S.A.

INDUSTRIAL MOTOR

THREE PHASE

CAT. NO.	M2333T			CONNECT	
SPEC.	07H203W269			LOW VOLTAGE	
FRAME	254T	SER.	F894	6 5	
H.P.	15	TE		9 8	
VOLTS	230/460			3 2	
AMPS	38/19			LINE	
	1760			HIGH VOLTAGE	

230/460			LINE	
38/19				
1760			HIGH VOLTAGE	
60	PH	3	CLASS	F
1.15	DES	B	CODE	H
NOM. EFF.	90.2 %		P.F.	82 %
40C AMB-CONT			LINE	