

1999 Tower Tech Modular Cooling Towers – 680 Tons

Mfg: Tower Tech

Model: EF288 319

Stock No. TTHS001.

Serial No. 1102430102 and 1102430202

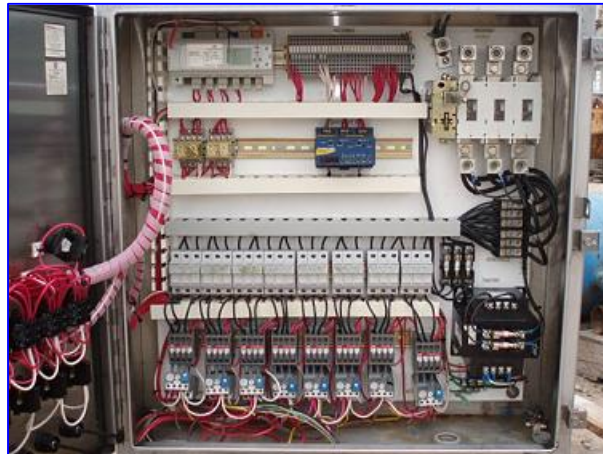
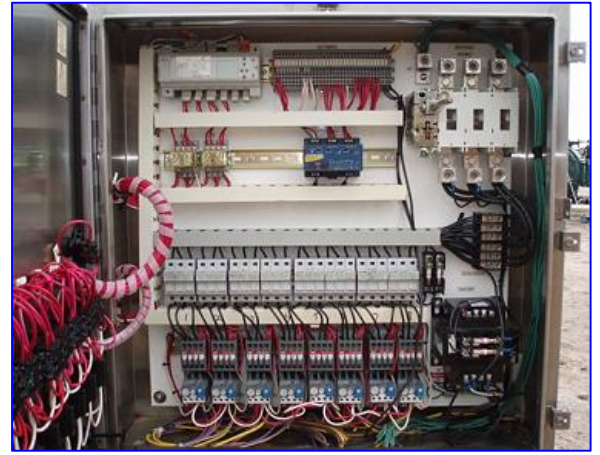
(2) 1999 Tower Tech Modular Cooling Towers . 680 tons. Model: EF288 319. S/Ns: 1102430102 and 1102430202. Material of construction: fiber-reinforced plastic. Variable-flow rotary spray nozzles. Patented water collection system. Flow-thru basin. Bottom mounted fans. (8) Electric Motors, 7.5 hp, 460 V, 14 amps, 60 Hz, 3 phase. (2) 1999 Tower Tech Control Panels, Model: TTMT288319, Job No: 981102, total amps (including fans): 124.5. Inlets: (2) 8 in. dia. flanged port. Outlets: (1) 13 in. dia. flanged port, (1) 21 in. W x 1 ft. 2 in. H. Overall dimensions (control panel): 2 ft. 6 in. L x 1 ft. W x 2 ft. 7 in. H. Overall dimensions: 24 ft. L x 11 ft. 9 in. W x 11 ft. 2 in. H (without legs).

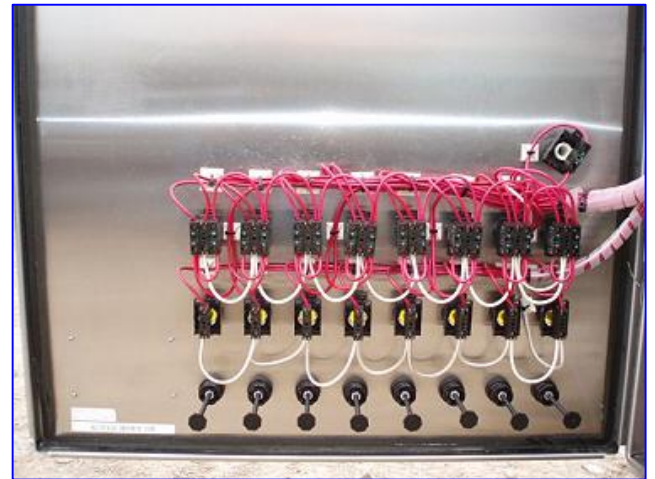
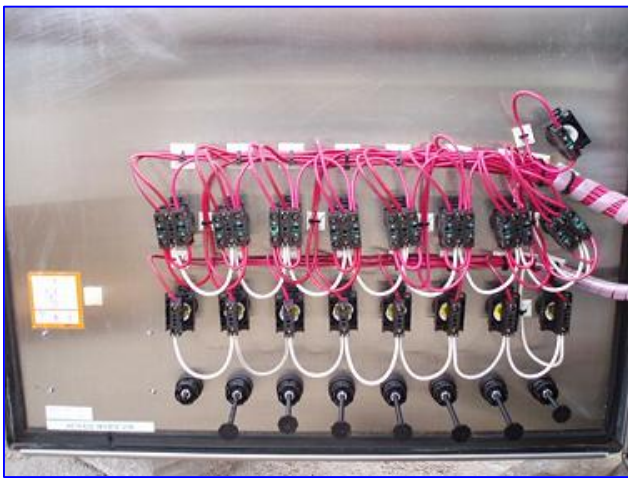













 **Tower Tech, Inc.**
The Technology Company


Model No. TTM1288319 Date Mfg 3/11/99
 Total Amps 124.5 Volts 460 Phase 3 Job No. 86102
 No. of motors 2 H.P. Each 7.5 Amps Each 14

CAUTION
 Disconnect all sources of supply
 before working on this equipment
 Tower Tech, Inc. Service Dept. 405-222-2876

 **Tower Tech, Inc.**
The Technology Company

MODEL EF-288-319 PROD. NO. 55-0061
 SERIAL NO. 1102-43-02-02
 NO. CELLS 02 DATE: 03-08-99

MANUFACTURED UNDER U.S. PATENTS
 5,227,095 5,143,657 5,152,458
 OTHER U.S. AND INTERNATIONAL PATENTS PENDING
 P.O. BOX 1838, CHICKASHA, OK 73018 PHONE (405) 222-2876

 **Tower Te**
The Technolog

MODEL EF-288-319
 SERIAL NO. 1102-43-02-02
 NO. CELLS 02 DATE: 03-08

MANUFACTURED UNDER U.S. P
 5,227,095 5,143,657 5,152,458

The Technology Company

EF-288-319 PROD. NO. 55-0061
1102-43-02-02
2 DATE: 03-08-99

MANUFACTURED UNDER U.S. PATENTS
 5,227,095 5,143,657 5,152,458
 AND INTERNATIONAL PATENTS PENDING
 1838, CHICKASHA, OK 73018 PHONE (405) 222-2876



TOWER TECH, Inc.
The Technology Company

Model No.

TTMT288319

Total Amps

124.5

Volts

460

PH

No. of motors

8

H.P. Each

7.5

CAUTION

Disconnect all sources
before working on this equipment
Tower Tech, Inc. Service Dept.

TOWER TECH, Inc.
The Technology Company

319

Date Mfg

3/11/99

Volts

460

Phase

3

Job No.

98102

H.P. Each

7.5

Amps Each

14

CAUTION

Disconnect all sources of supply
before working on this equipment
Service Dept. 405-222-2876