

1992 J.C. Pardo and Son Tumble Cook / Cool Tank

Mfg: J.C. Pardo and Sons

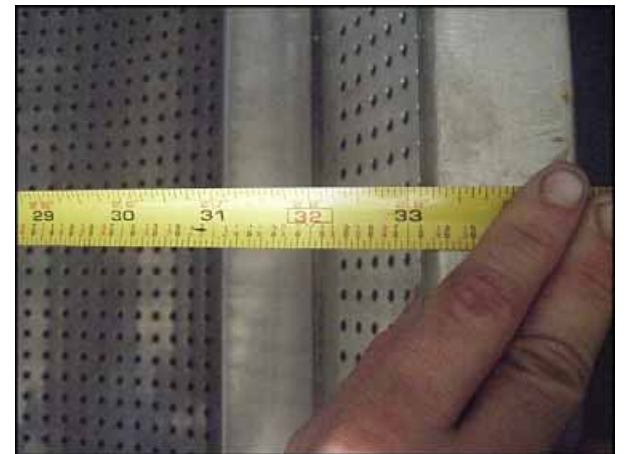
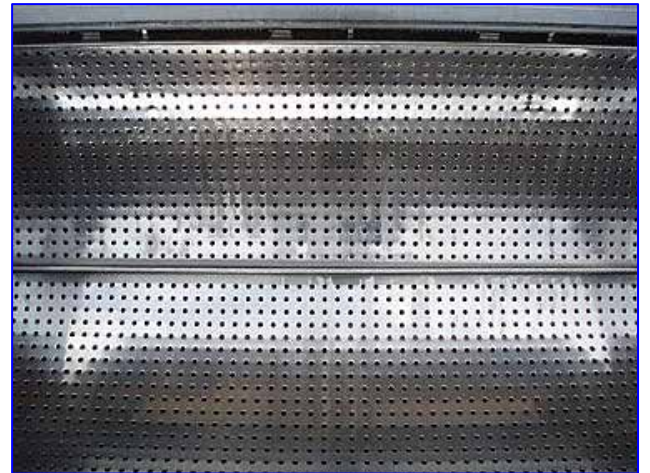
Model: P-TC-CT-100 / TCCT-100-CC

Stock No.: UMCT002

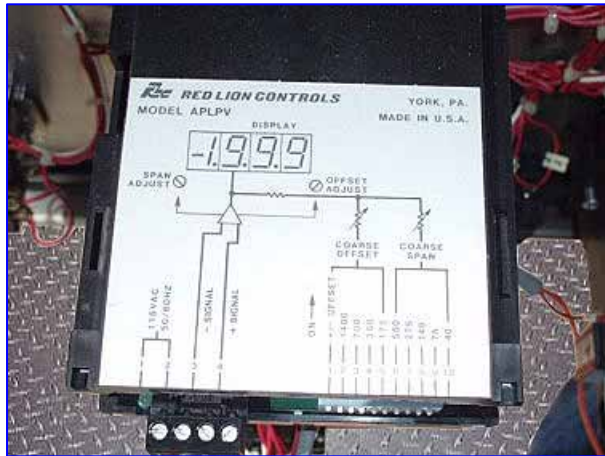
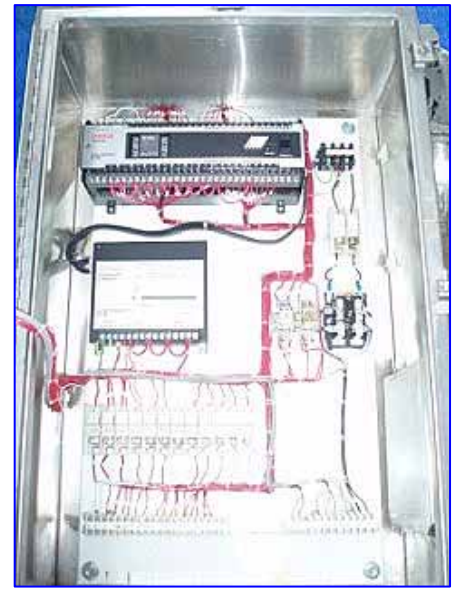
Serial No.: 5824

1992 J.C. Pardo and Son Tumble Cook / Cool Tank. Models: P-TC-CT-100 / TCCT-100-CC. S/N: 5824. Capacity: 100 gallons. Bottom jacketed. MAWP: 50 psi @ 298 °F. MDMT: -20 °F @ 50 psi. Power supply: 208 V, 60 Hz, 3 phase. Control power supply: 120 V, 60 Hz, single phase. Sew-Eurodrive motor, 1.5 hp, 1180 rpm, 230/460 V, 5.8/2.9 amps, 60 Hz, 3 phase. Sew-Eurodrive speed reducer, 165.28 ratio, final speed: 7 rpm. Partlow ARC 4100 Series process recorder, Model: 413413411711AV-028. S/N: 91H38042, 24-hour rotation, range: 30/230 °F, input: RTD, power supply: 115 Vac, 60 Hz. Overall dimensions: 8 ft. 11 in. L x 4 ft. 8 in. W x 5 ft. 2-1/2 in. H.(ACN556).









ARC 4100 SERIES				THE PARTLOW CO	
PROCESS CONTROL EQUIPMENT				NEW HARTFORD, NE	
MODEL				413413411711AV-028	
SERIAL NO.				91H38042	
115	VAC	60	HZ	24	HOUR ROTATION
INPUT	RTD		RANGE		30/230F
INPUT			RANGE		
				RELAY OUTPUT 115VAC 5.0A R 230VAC 2.5A F 230 VAC 1/2 HP 115/230VAC 2S	
				MAXIMUM AMBIE C23465	
				MADE IN U	