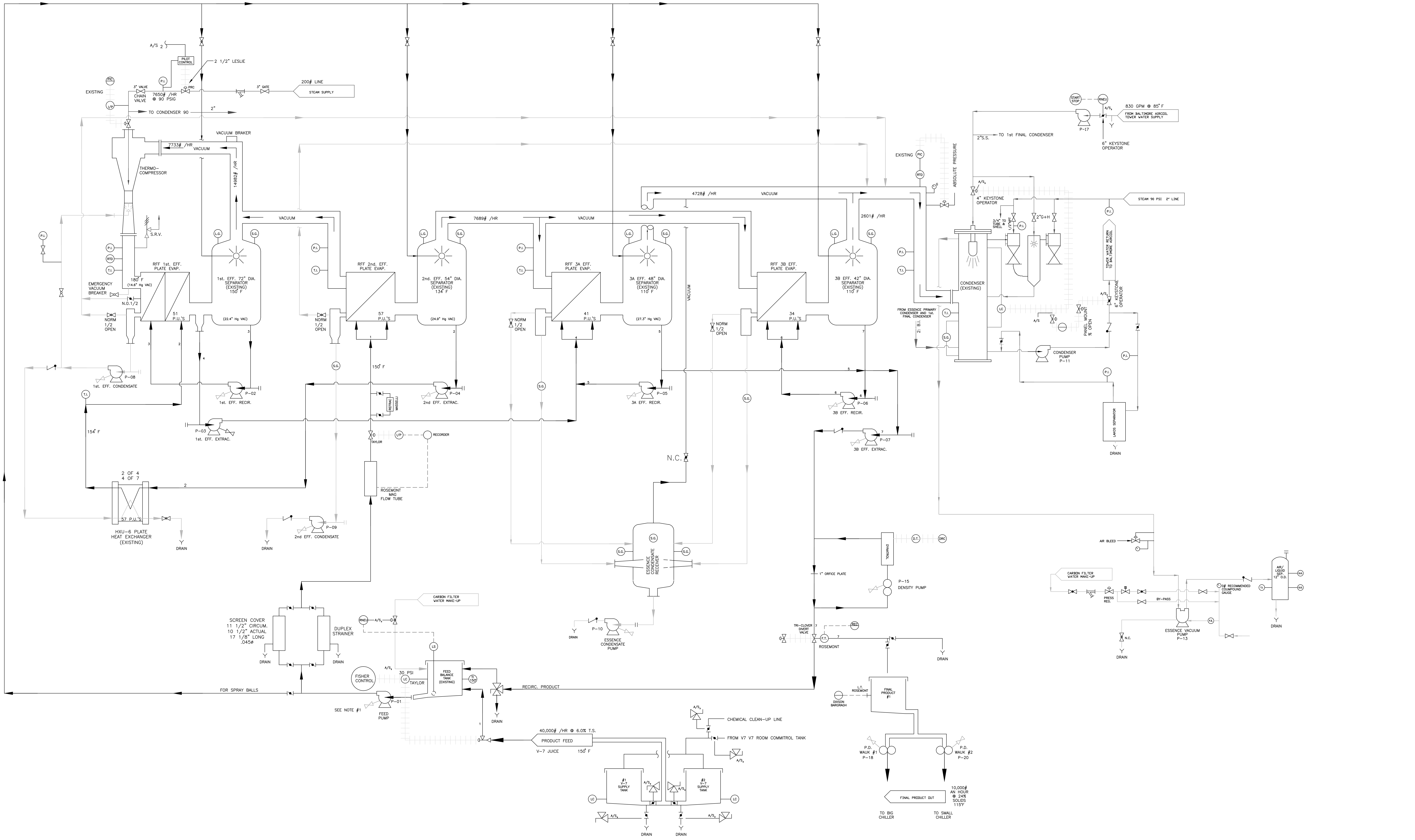


P-01 V7 APV-EVAP. BAL. FEED PUMP 2.5" X 2" IMP. 4.96" ALFA-LAWL MODEL LKH10MFG18T	P-02 1A RECIRC. PUMP 2.5" X 2" IMP. 4.96" ALFA-LAWL MODEL LKH35MFG18T	P-03 1st EFF. EXTRACT. PUMP 2.5" X 2" IMP. 4.96" ALFA-LAWL MODEL LKH35MFG18T	P-04 2nd EFF. EXTRACT. PUMP 2.5" X 2" IMP. 4.96" ALFA-LAWL MODEL LKH35MFG18T	P-05 3A EFF. RECIRC. PUMP 2.5" X 2" IMP. 4.96" ALFA-LAWL MODEL LKH35MFG18T	P-06 3B EFF. RECIRC. PUMP 2.5" X 2" IMP. 4.96" ALFA-LAWL MODEL LKH35MFG18T	P-07 3B EFF. EXTRACT. PUMP 2.5" X 2" IMP. 4.96" ALFA-LAWL MODEL LKH35MFG18T	P-08 1st EFF. CONDENS. PUMP 2.5" X 2" IMP. 4.96" ALFA-LAWL MODEL LKH25MFG18T	P-09 2nd EFF. CONDENS. PUMP 2.5" X 2" IMP. 4.96" ALFA-LAWL MODEL LKH25MFG18T	P-10 ESS. CONDENS. PUMP (CENT.) WALKERSHA MODEL 2045 1 1/2" HP @3500 RPM 4" IMP.	P-11 CONDENSER DISCHARGE PUMP GOULDS 3196 XL1-X 40- HP @1800 RPM 364T 8 X 6 X 13 13/16" IMP.	P-13 VACUUM PUMP (SHH) 3709 51H 7 1/2" HP @1750 RPM	P-15 DENSITY PUMP WALK POSITIVE DISPLACEMENT MODEL 30 ON PLATFORM UNDER 3B EFF.	P-17 INFEEED CONDENSER PUMP GOULDS 3196 6 X 4 X 10 8.75" IMP. S/N 7500577.1	P-18 #1 CHILLER PUMP WALKERSHA MODEL 60 7.5 HP	P-20 #2 CHILLER PUMP WALKERSHA MODEL 60 10 HP
---	---	--	--	--	--	---	--	--	--	--	--	---	---	---	--



- | | | | | |
|---|---|--|--|--|
| <p>TOWER WATER</p> <p>CONDENSATE</p> <p>ESSENCE</p> <p>PRODUCT PIPING</p> <p>SERVICE PIPING</p> <p>INSTRUMENT AIR</p> <p>ELECTRICAL SIGNAL</p> <p>FILLED CAPILLARY</p> <p>STEAM</p> <p>WATER MAKE-UP</p> <p>PUMP SEALS</p> <p>CHILLED WATER</p> | <p>GATE VALVE</p> <p>GLOBE VALVE</p> <p>BUTTERFLY VALVE</p> <p>CHECK VALVE</p> <p>SOLENOID VALVE</p> <p>CONTROL VALVE</p> | <p>REMOTE MOUNTED INSTRUMENT</p> <p>INSTRUMENT MOUNTED ON PANEL FACE</p> <p>INSTRUMENT MOUNTED BEHIND PANEL</p> <p>MAGNETIC FLOW TUBE (ROSEMONT)</p> | <p>A/S = (REGULATED) 20 PSIG CLEAN DRY AIR SUPPLY</p> <p>A/S₂ = CLEAN DRY AIR SUPPLY AS NOTED</p> <p>Y = DRAIN</p> <p>ST = STEAM TRAP</p> | <p>L.G. = LIGHTED SIGHT GLASS</p> <p>T.I. = TEMP. INDICATOR</p> <p>P.I. = PRESSURE INDICATOR</p> <p>P.I.C. = PRESSURE INDICATOR CONTROL</p> <p>P.T. = PRESSURE TRANSMITTER</p> <p>L.C. = LEVEL CONTROL</p> <p>S.G. = SIGHT GLASS</p> <p>L.T. = LEVEL TRANSMITTER</p> <p>NOTE - SEAL WATER FOR ALL PUMPS EXCEPT P-11 & P-12, P-17</p> |
|---|---|--|--|--|

THIS DOCUMENT CONTAINS PROPRIETARY INFORMATION AND IS TO BE RETURNED TO THE COMPANY UPON REQUEST. THE COMPANY MAY NOT BE COPIED, REPRODUCED, OR TRANSMITTED IN ANY FORM OR BY ANY MEANS WITHOUT THE EXPRESS PERMISSION OF THE COMPANY.

REV	DESCRIPTION	ASSIGNMENT/PROJECT NO.	REV	DESCRIPTION	ASSIGNMENT/PROJECT NO.	REV	DESCRIPTION	ASSIGNMENT/PROJECT NO.	REV	DESCRIPTION	ASSIGNMENT/PROJECT NO.
A	REVISED AS PER MARKED PRINT		B	REVISED AS PER MARKED PRINT FROM MAINT.		A	REVISED AS PER MARKED PRINT				
ISSUE DATE	BY	CHECKED	ENGR APVD	ENGR MGR APVD	DFT MGR APVD	ISSUE DATE	BY	CHECKED	ENGR APVD	ENGR MGR APVD	DFT MGR APVD
08-31-98	T.P.G.					07-26-04	T.P.G.				

SCALE: 1" = 10'	PERMANENTLY MARK PART NO. OR SERIAL NO. CHECKED BY	MATERIAL FINISH	DRAWN BY: B. SALYER	DATE: 06-28-96
TOLERANCE UNLESS OTHERWISE SPECIFIED	ENGR APVD: CUL	ENGR MGR APVD:	CAMPBELL SOUP COMPANY ENGINEERING NAPOLEON, OH	
BASIC DIM: ±.04	PROJECT NO./ASSIGNMENT NO. REDRAWN FROM APV DWG. P4-E16802-A-00	DFT MGR APVD:	FLOW SCHEMATIC FOR TRIPPLE EFFECT FIVE STAGE EVAPORATOR WITH ESSENCE RECOVERY BEVERAGE PLANT	
UP TO 6: ±.04	USER OR GOVT APPROVAL NO.	DATE: 06-28-96	DRAWING NO. 004P E004370	
6 TO 24: ±.06	ISO 9001		DWG FILE: CADDWG2\87\00437001.DWG	
24 UP TO 48: ±.08			1 of 1	
48 TO 96: ±.10			DATE: 11-23-31-Aug-98 / PLOT: 11-24-31-Aug-98	
96 TO 192: ±.12				
192 TO 384: ±.15				
384 TO 768: ±.20				
768 TO 1536: ±.25				
1536 TO 3072: ±.30				
3072 TO 6144: ±.40				
6144 TO 12288: ±.50				