

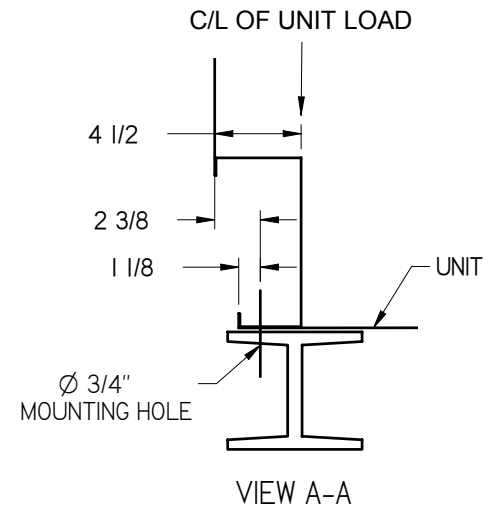
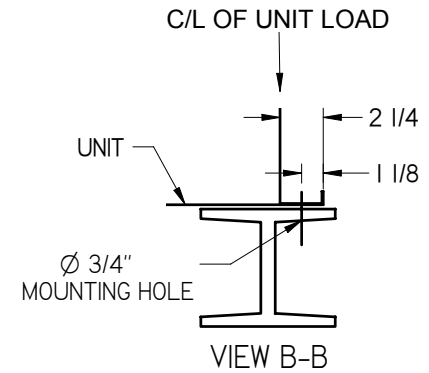
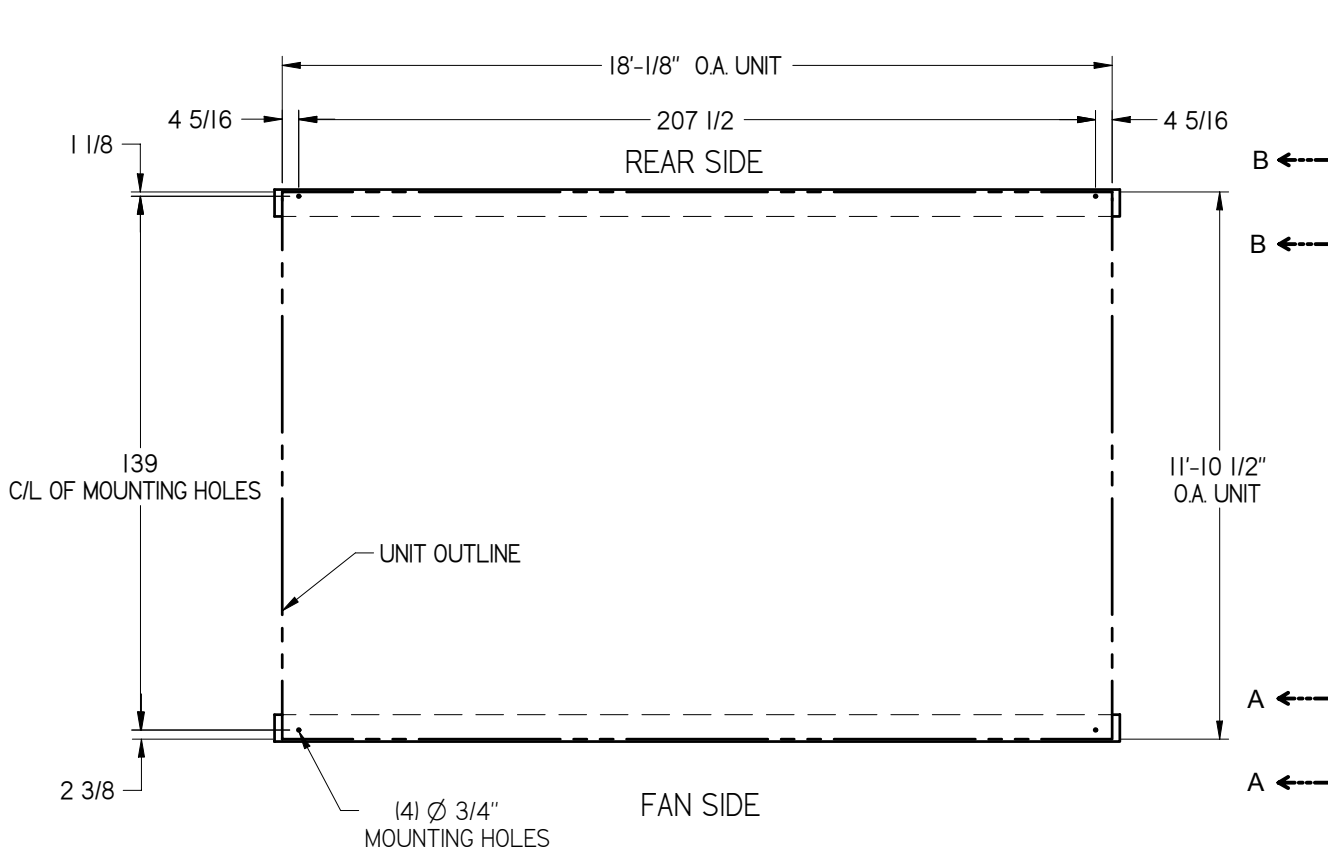
CONFIDENTIAL

This document is the property of Evapco, Inc. It should not be copied or disclosed without prior written authorization.

EVAPCO, INC.



UNIT	STEEL SUPPORT CONFIGURATION	MODEL #	12x18 PROP UNITS	SCALE	1:50	DWG. #	CPI218ERD-SL	SERIAL #	
------	-----------------------------	---------	------------------	-------	------	--------	--------------	----------	--



NOTES:

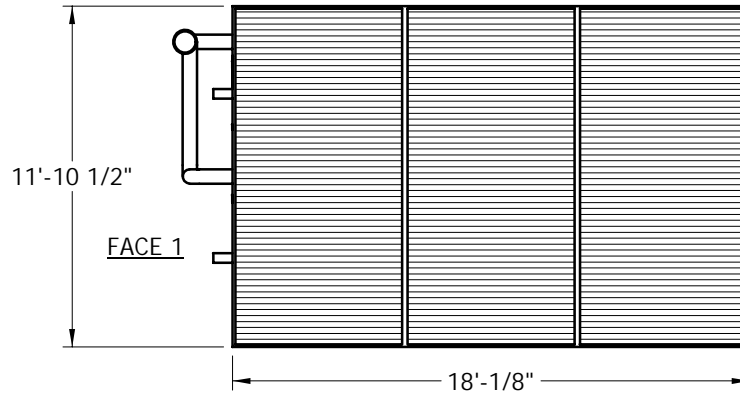
1. BEAMS SHOULD BE SIZED IN ACCORDANCE WITH ACCEPTED STRUCTURAL PRACTICES. MAXIMUM DEFLECTION OF BEAM UNDER UNIT TO BE 1/360 OF UNIT LENGTH NOT TO EXCEED 1/2".
2. DEFLECTION MAY BE CALCULATED BY USING 55% OF THE OPERATING WEIGHT AS A UNIFORM LOAD ON EACH BEAM. SEE CERTIFIED PRINT FOR OPERATING WEIGHT.
3. SUPPORT BEAMS AND ANCHOR HARDWARE ARE TO BE FURNISHED BY OTHERS. ANCHOR HARDWARE TO BE 5/8".
4. BEAMS MUST BE LOCATED UNDER THE FULL LENGTH OF THE PAN SECTION.
5. SUPPORTING BEAM SURFACE MUST BE LEVEL. DO NOT LEVEL THE UNIT BY PLACING SHIMS BETWEEN THE UNIT MOUNTING FLANGE AND THE SUPPORTING BEAM.
6. ANCHORING ARRANGEMENT SHOWN HAS A MAXIMUM WIND RATING OF 30 PSF ON CASED VERTICAL SURFACES.
7. THE FACTORY RECOMMENDED STEEL SUPPORT CONFIGURATION IS SHOWN. CONSULT THE FACTORY FOR ALTERNATE SUPPORT CONFIGURATIONS.
8. UNIT SHOULD BE POSITIONED ON STEEL SUCH THAT THE ANCHORING HARDWARE FULLY PENETRATES THE BEAM'S FLANGE AND CLEARS THE BEAM'S WEB.

EVAPCO, INC.

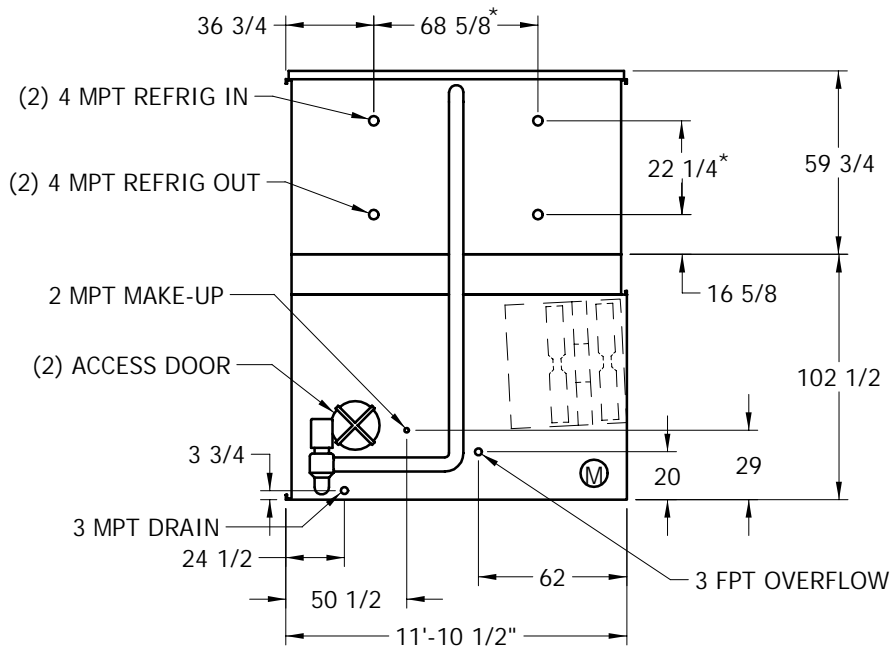


UNIT	EVAPORATIVE CONDENSER	MODEL #		SCALE	NTS	DWG. #	CP121806-ERD-ST	REV.		DATE		SERIAL #	
------	-----------------------	---------	--	-------	-----	--------	-----------------	------	--	------	--	----------	--

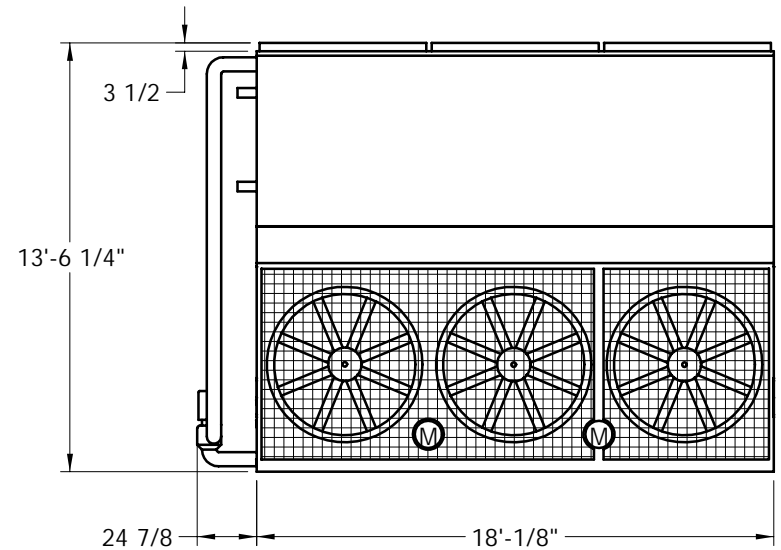
- NOTES:
1. (M) - FAN MOTOR LOCATION
 2. HEAVIEST SECTION IS UPPER SECTION
 3. MPT DENOTES MALE PIPE THREAD
FPT DENOTES FEMALE PIPE THREAD
BFW DENOTES BEVELED FOR WELDING
 4. + UNIT WEIGHT DOES NOT INCLUDE ACCESSORIES (SEE SEPARATE DRAWINGS FOR ACCESSORIES)
 5. 3/4" DIA. MOUNTING HOLES. REFER TO RECOMMENDED STEEL SUPPORT DRAWING
 6. MAKE-UP WATER PRESSURE-20 psi MIN, 50 psi MAX
 7. * - APPROXIMATE DIMENSIONS DO NOT USE FOR PRE-FABRICATION OF CONNECTING PIPING.



FACE 2
PLAN VIEW



FACE 1



FACE 2

SHIPPING WEIGHT	22700	lbs. +	OPERATING WEIGHT	31520	lbs.	HEAVIEST SECTION WEIGHT	15180	lbs.	NO. OF SHIPPING SECTIONS	2
-----------------	-------	--------	------------------	-------	------	-------------------------	-------	------	--------------------------	---



Engineering Dimensions & Data *Axial Fan Models PMCB 435 to 1770*

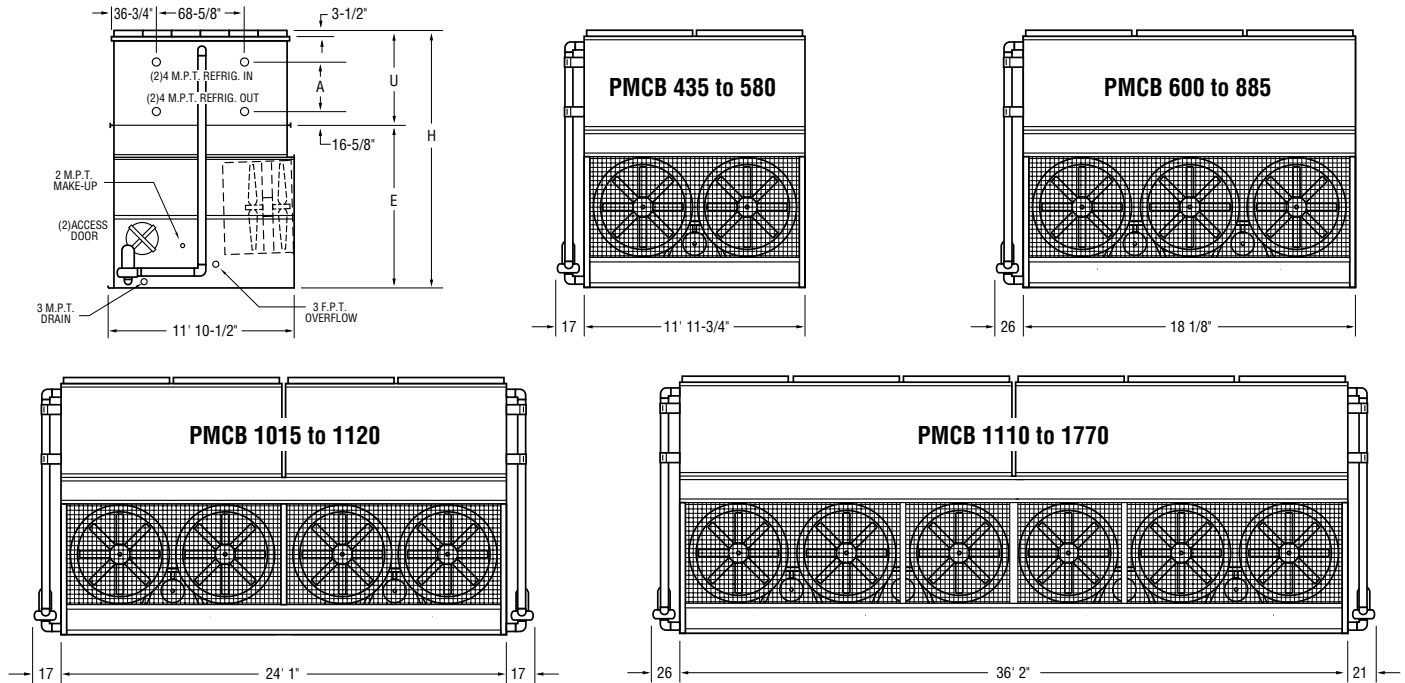


Table 19 Engineering Data

PMCB Model No.*	R-717 Tons*	Fans		Weights			Refrigerant Charge lbs.***	Coil Volume ft ³	Spray Pump		Remote Pump		Dimensions				
		HP	CFM	Shipping	Operating	Heaviest Section†			HP	GPM	Gallons Req'd**	Conn. Size	Operating Weight	Height H	Upper U	Lower E	Coil A
435	309	15	74,100	17,160	23,270	12,310	395	54	5	800	500	10"	20,270	14' 2-3/4"	5' 8-1/4"	8' 6-1/2"	30-3/4"
475	337	15	73,900	19,600	25,900	14,740	490	67	5	800	500	10"	22,900	14' 11-1/4"	6' 4-3/4"	8' 6-1/2"	39-1/4"
495	351	25	87,200	17,420	23,530	12,310	395	54	5	800	500	10"	20,530	14' 2-3/4"	5' 8-1/4"	8' 6-1/2"	30-3/4"
510	362	30	89,900	17,580	23,690	12,310	395	54	5	800	500	10"	20,690	14' 2-3/4"	5' 8-1/4"	8' 6-1/2"	30-3/4"
535	379	25	85,000	19,860	26,160	14,740	490	67	5	800	500	10"	23,160	14' 11-1/4"	6' 4-3/4"	8' 6-1/2"	39-1/4"
540	383	20	79,400	22,070	28,530	17,180	580	79	5	800	500	10"	25,530	15' 7-3/4"	7' 1-1/4"	8' 6-1/2"	47-3/4"
560	397	25	84,000	22,210	28,670	17,180	580	79	5	800	500	10"	25,670	15' 7-3/4"	7' 1-1/4"	8' 6-1/2"	47-3/4"
580	411	30	86,900	22,370	28,830	17,180	580	79	5	800	500	10"	25,830	15' 7-3/4"	7' 1-1/4"	8' 6-1/2"	47-3/4"
600	426	20 & 10	129,000	21,750	30,230	14,230	445	61	7-1/2	1,200	730	12"	25,730	13' 6-1/4"	4' 11-3/4"	8' 6-1/2"	22-1/4"
660	468	15 & 7-1/2	118,000	25,280	34,150	17,650	580	80	7-1/2	1,200	730	12"	29,650	14' 2-3/4"	5' 8-1/4"	8' 6-1/2"	30-3/4"
705	500	20 & 10	125,500	25,440	34,310	17,650	580	80	7-1/2	1,200	730	12"	29,810	14' 2-3/4"	5' 8-1/4"	8' 6-1/2"	30-3/4"
770	546	20 & 10	121,900	29,120	38,360	21,150	730	99	7-1/2	1,200	730	12"	33,860	14' 11-1/4"	6' 4-3/4"	8' 6-1/2"	39-1/4"
805	571	20 & 10	120,800	32,440	42,070	24,650	870	119	7-1/2	1,200	730	12"	37,570	15' 7-3/4"	7' 1-1/4"	8' 6-1/2"	47-3/4"
815	578	25 & 15	128,800	29,660	38,900	21,150	730	99	7-1/2	1,200	730	12"	34,400	14' 11-1/4"	6' 4-3/4"	8' 6-1/2"	39-1/4"
855	606	30 & 15	135,000	29,820	39,060	21,150	730	99	7-1/2	1,200	730	12"	34,560	14' 11-1/4"	6' 4-3/4"	8' 6-1/2"	39-1/4"
885	628	30 & 15	132,800	33,520	43,150	24,650	870	119	7-1/2	1,200	730	12"	38,650	15' 7-3/4"	7' 1-1/4"	8' 6-1/2"	47-3/4"
1015	720	(2)20	160,000	38,860	51,730	13,660	975	133	(2)5	1,600	1,000	14"	45,730	14' 11-1/4"	6' 4-3/4"	8' 6-1/2"	39-1/4"
1080	766	(2)20	158,800	43,560	56,770	15,890	1,165	159	(2)5	1,600	1,000	14"	50,770	15' 7-3/4"	7' 1-1/4"	8' 6-1/2"	47-3/4"
1120	794	(2)25	168,000	43,840	57,050	15,890	1,165	159	(2)5	1,600	1,000	14"	51,050	15' 7-3/4"	7' 1-1/4"	8' 6-1/2"	47-3/4"
1110	787	(2)15 & (2) 7-1/2	238,000	42,640	59,880	13,270	890	121	(2)7-1/2	2,400	1,460	16"	50,880	13' 6-1/4"	4' 11-3/4"	8' 6-1/2"	22-1/4"
1320	936	(2)15 & (2) 7-1/2	236,000	50,010	68,020	16,380	1,170	160	(2)7-1/2	2,400	1,460	16"	59,020	14' 2-3/4"	5' 8-1/4"	8' 6-1/2"	30-3/4"
1410	1000	(2)20 & (2)10	251,000	50,330	68,340	16,380	1,170	160	(2)7-1/2	2,400	1,460	16"	59,340	14' 2-3/4"	5' 8-1/4"	8' 6-1/2"	30-3/4"
1485	1053	(2)25 & (2)15	264,000	51,410	69,420	16,380	1,170	160	(2)7-1/2	2,400	1,460	16"	60,420	14' 2-3/4"	5' 8-1/4"	8' 6-1/2"	30-3/4"
1540	1092	(2)30 & (2)15	274,000	51,730	69,740	16,380	1,170	160	(2)7-1/2	2,400	1,460	16"	60,740	14' 2-3/4"	5' 8-1/4"	8' 6-1/2"	30-3/4"
1630	1156	(2)25 & (2)15	257,600	58,770	77,520	19,560	1,455	199	(2)7-1/2	2,400	1,460	16"	68,520	14' 11-1/4"	6' 4-3/4"	8' 6-1/2"	39-1/4"
1710	1213	(2)30 & (2)15	270,000	59,090	77,840	19,560	1,455	199	(2)7-1/2	2,400	1,460	16"	68,840	14' 11-1/4"	6' 4-3/4"	8' 6-1/2"	39-1/4"
1770	1255	(2)30 & (2)15	265,600	66,500	86,030	22,750	1,740	237	(2)7-1/2	2,400	1,460	16"	77,030	15' 7-3/4"	7' 1-1/4"	8' 6-1/2"	47-3/4"

* Tons at standard conditions: HCFC-22 and HFC-134a. 105°F condensing, 40°F suction and 78°F W.B.; ammonia 96.3°F condensing, 20°F suction and 78°F W.B.

** Gallons shown is water in suspension in unit and piping. Allow for additional water in bottom of remote sump to cover pump suction and strainer during operation. (12" would normally be sufficient.)

† Heaviest section is the coil section.

*** Refrigerant charge is shown for R-717. Multiply by 1.93 for R-22 and 1.98 for R-134a.

Dimensions are subject to change. Do not use for pre-fabrication.