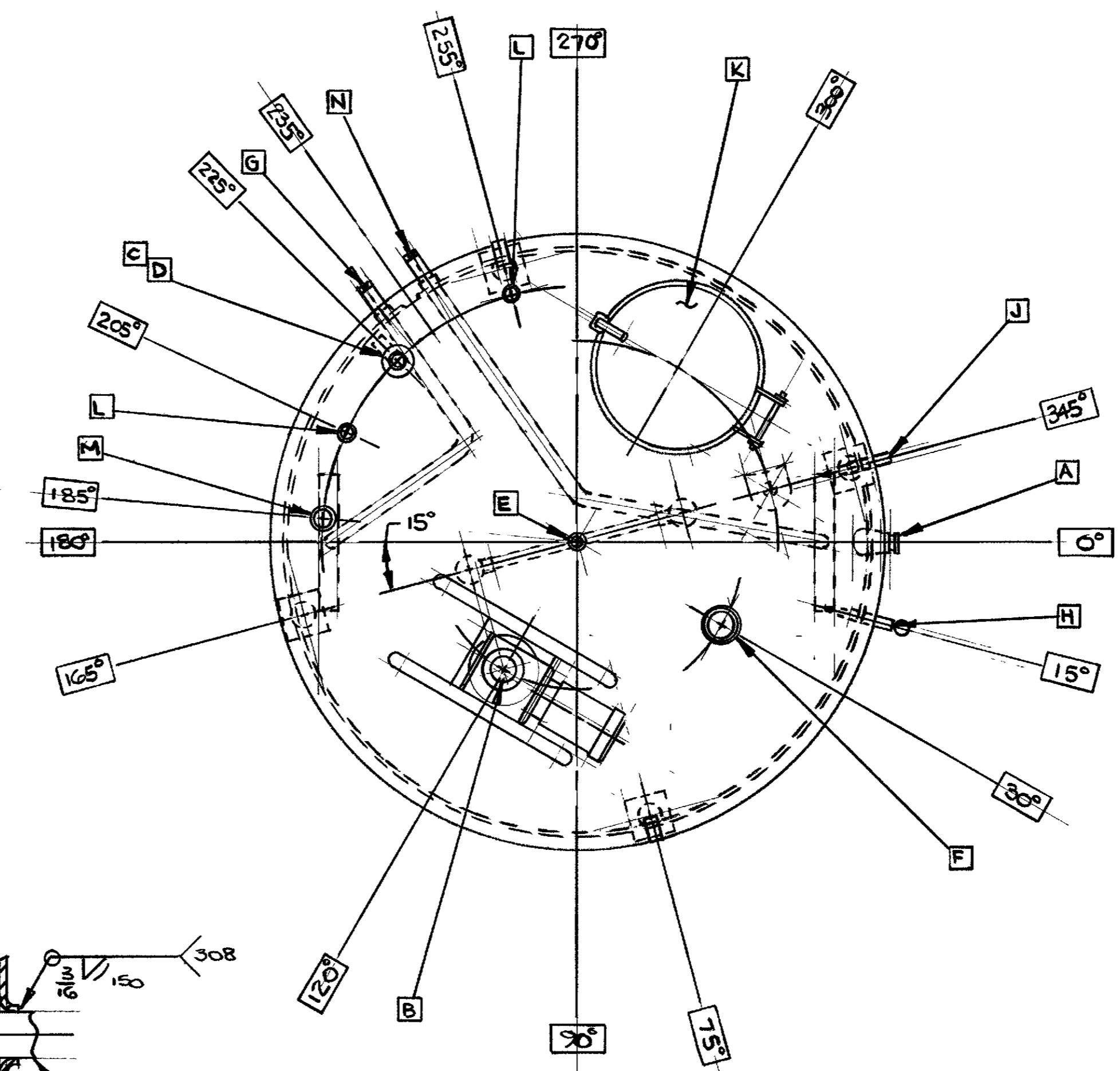
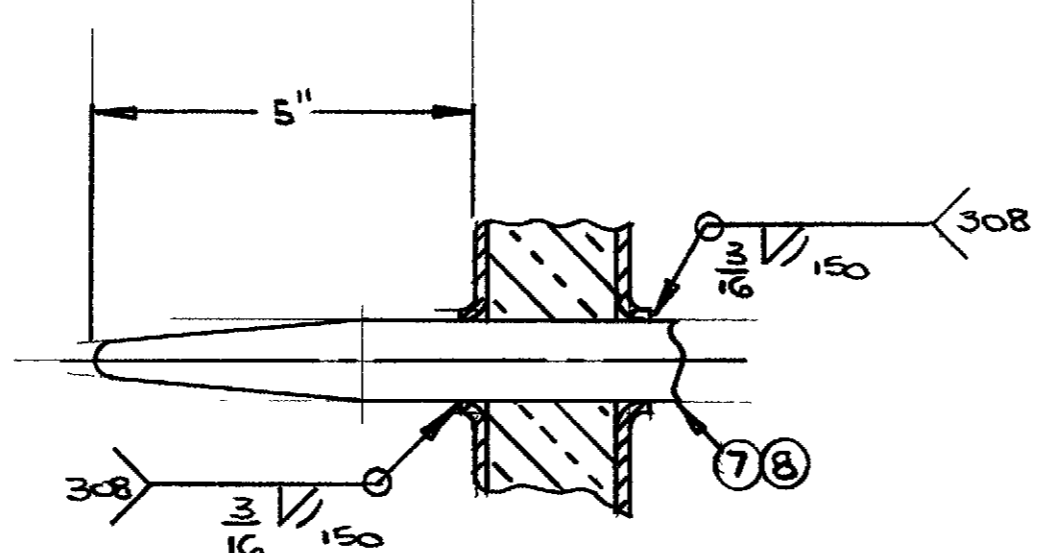


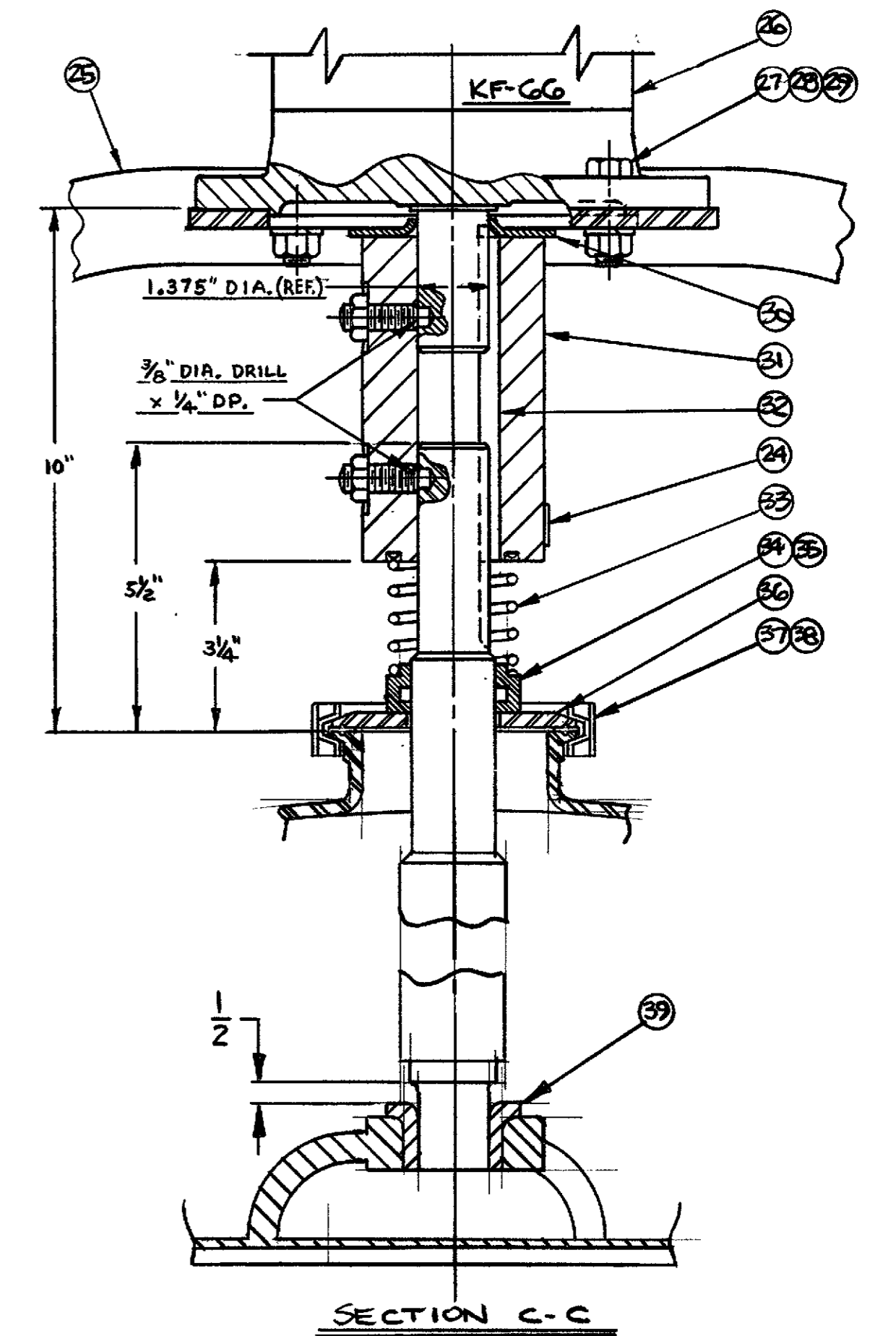
TOP VIEW
TANK #1
88-F-36351-A



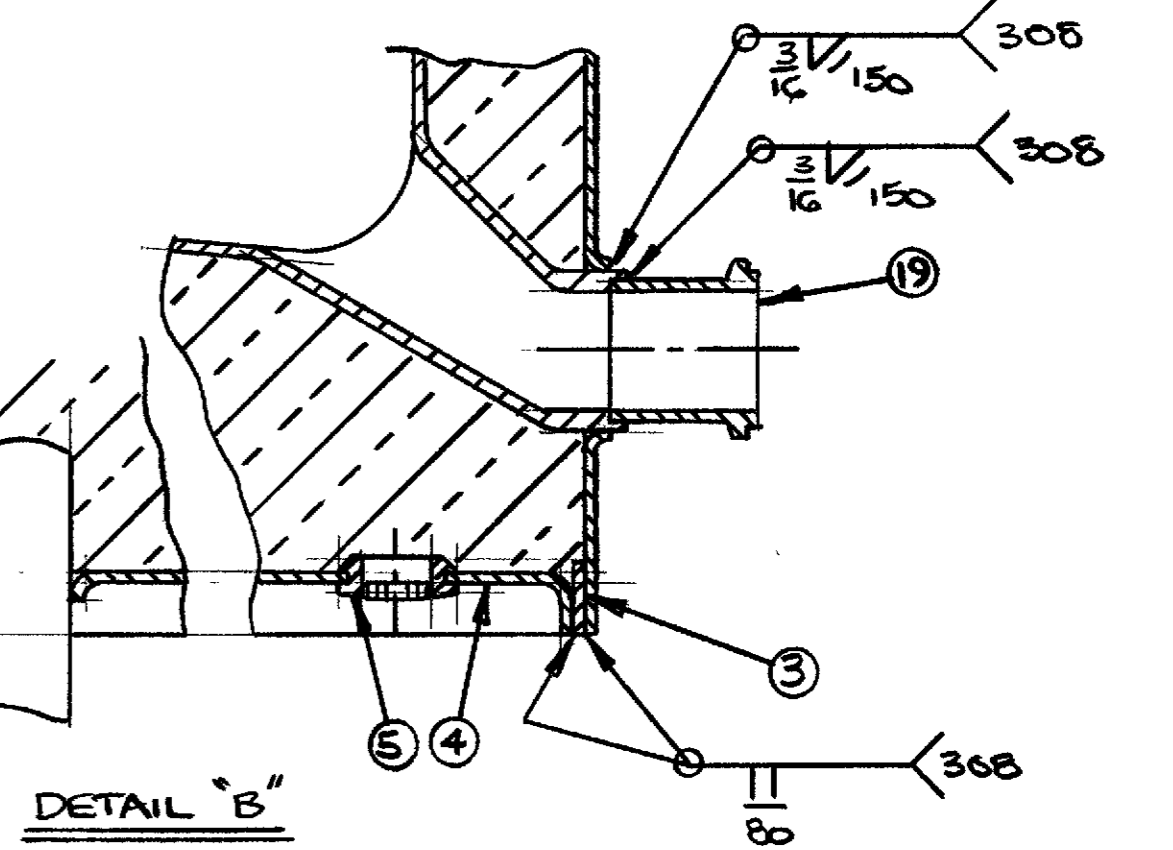
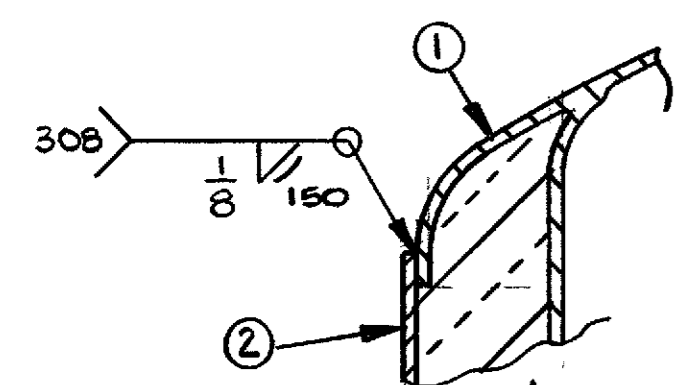
TOP VIEW
TANK #2
88-F-36351-B
(DIMENSIONS IDENTICAL TO TANK #1)



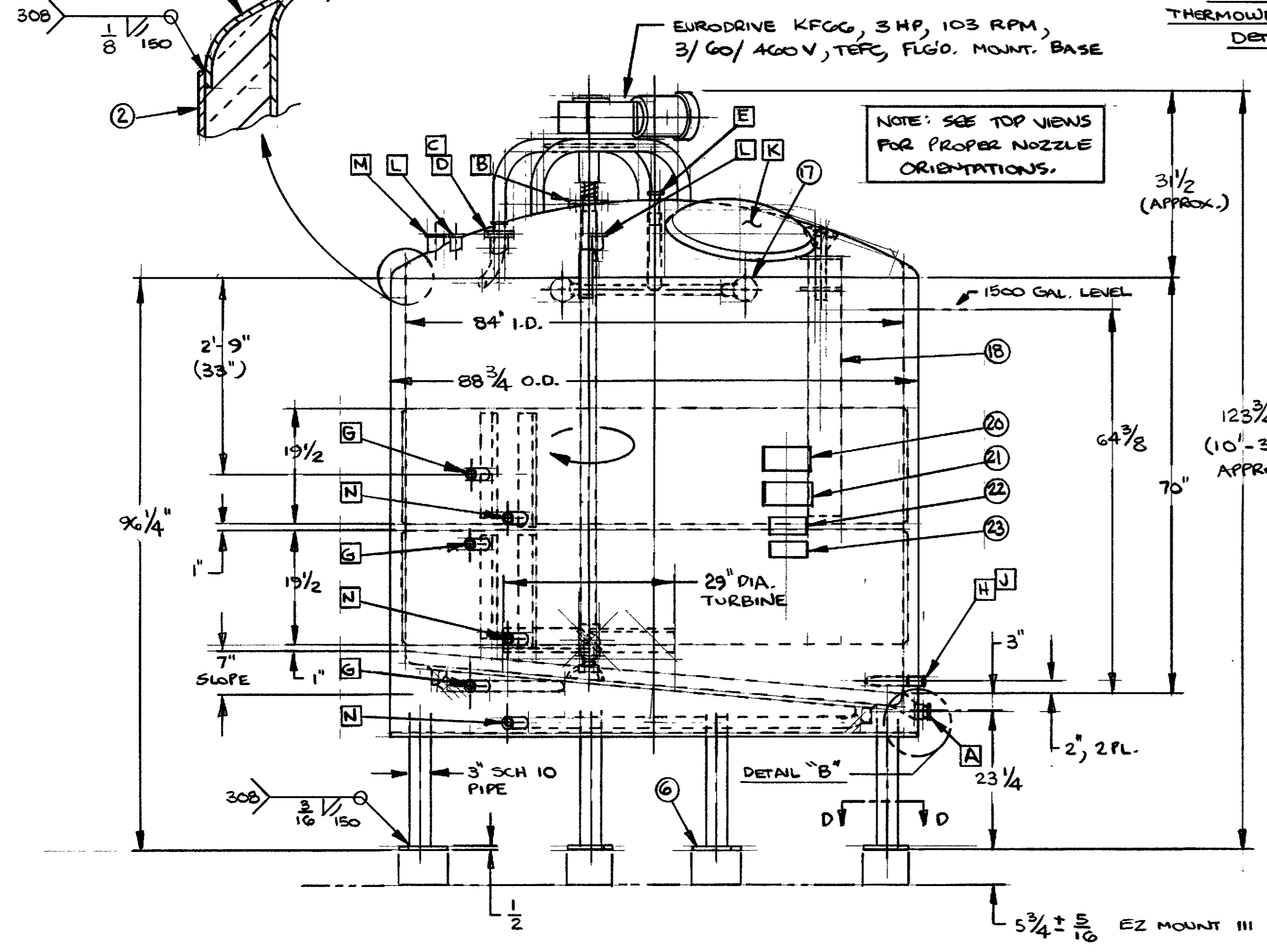
DETAIL "A"
THERMOWELL INSTALLATION
DETAIL TYP.



SECTION C-C

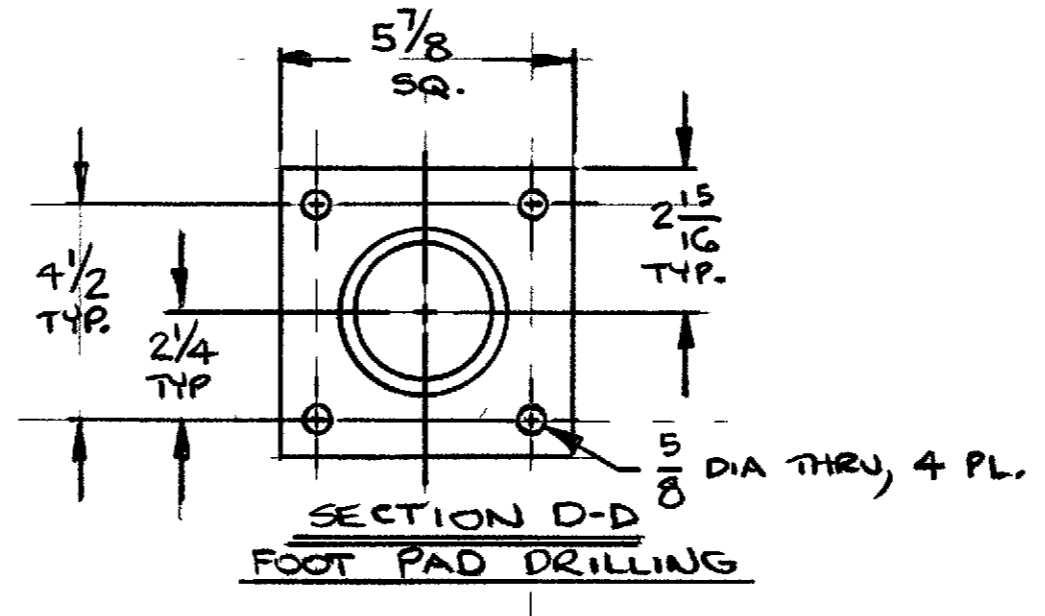


DETAIL "B"



NOTE: SEE TOP VIEWS FOR PROPER NOZZLE ORIENTATIONS.

- NOTES:
- MATERIAL:
TOP HD. SIDEWALL, BOT. HD - 10 GA SA240-304
OUTER JKT. SIDEWALL - 12 GA SA 240-304
OUTER BOT. - 13 GA SA240-304
THERMALOX - 5 MIL COAT ON ALL INSULATED SURFACES
INSULATION - 2" CERAWOOL SIDEWALL AND BOT. HD.
ALL OTHER PRODUCT CONTACT SURFACES - 304
 - FINISHES:
ALL SURFACES (EXCEPT OUTER BOTTOM) - 150 GRIT W/
WELDS G/P TO 150 GRIT.
OUTER BOTTOM - 2B FINISH W/ WELDS G/P TO 80 GRIT.
 - VESSEL DESIGN PRESSURE: ATMOSPHERIC
 - DIMPLED JACKET DATA: APPROX. 105 TOTAL SF (2 ZONES
SIDEWALL 35 1/2 SF EA., 1 ZONE BOT. 34 SF) OF 16 GA
SA 240-304 TYPE AF DIMPLE JACKET, ASME CODE
STAMPED FOR 90 PSIG AT AT 382° F. TEST AT 225 PSIG.
 - CIP DATA: DCI T-BALL SPRAYBALL SET-UP, 40 GPM AT
20 PSIG ENCH BALL, SPRAYBALLS AND CIP TUBE REMOVABLE
 - AGITATION HP BASED ON PRODUCT DATA OF 500 CPS AND MAX.
SPEC. GRAVITY OF 1.1.
 - ESTIMATED EMPTY WEIGHT - 4500 POUNDS
 - WI FERRULES ARE CHERRY-BURRELL MALE END FERRULES.



SECTION D-D
FOOT PAD DRILLING

MK	DESCRIPTION	SERVICE	QTY.
N	1/2 NPT	CONDENSATE OUTLET/ H2O INLET	3
M	3" 14 WI FERRULE	SPARE	1
L	2" 14 WI FERRULE	OIL/ SPARE	2
K	24" MANWAY	TANK ACCESS	1
J	1/2 NPT T'WELL	RTD THERM. BURNS #12148-1	1
H	1/4-18 NF T'WELL	TAYLOR 26P397 W/ AND. J9RG THERM.	1
G	1/2 NPT	STEAM INLET/ H2O OUTLET	3
F	4" O.D. TUBE	VENT MOUNT	1
E	2" 14 WI FERRULE	CIP CONN.	1
D	2" 14 WI FERRULE	NO-FAM INLET TUBE (MILK/ H2O)	1
C	3" TRI-CLAMP	NO-FOAM TUBE MOUNT	1
B	4" TRI-CLAMP	AGITATOR ACCESS	1
A	2" 14 WI FERRULE	OUTLET	1

NOZZLE SCHEDULE

This drawing is the property of DCI, Inc. and is transmitted in confidence. The reproduction, use, or disclosure, in whole or part, of the design contained herein is prohibited without the written consent of DCI, Inc.

ORDER NO. 88-F-36351-A/B
NO RECD. 2

1500 GALLON PUMP PROCESSOR, 84" I.D.

REV	DATE	DO NOT SCALE DRAWING	DRWN SH	CHECKED	APR
A	9/5/87	DIMENSIONS IN INCHES UNLESS SPECIFIED	GARTNER		
B	9/21/87	TOLERANCE UNLESS SPECIFIED			
C	9/25/87				
D					
E					

SCALE 1/16" = 1"

ST. CLOUD, MN 56301

PREFIX DWG. NO. REV.
010 D111524 C

If this equipment is used in contact with corrosive materials (salts, free chlorides, or other corrosives) DCI, Inc. will not be responsible for the corrosion resistance, or the resulting damage, without written acceptance of such corrosive conditions by DCI, Inc. based upon a specific intended use and/or service.

5 3/4 ± 5/16 EZ MOUNT III (5K-10K) LOAD CELL (BY OTHERS)