

## York Water Cooled Chiller 90 Tons

Mfg: York

Model: YCWJ45PR-46

Stock No. 200.ACEU853

Serial No. SECM-329720

York Water Cooled Chiller 90 Ton. Model: YCWJ45PR-46, S/N: SECM-329720, Refrigerant: R-22, Cooling Capacity: 90 tons. Electrical Requirements: 460 V, 3 phase, 60 Hz. Unit control electrical requirements: 115 V, 3 phase, 60 Hz. Min circuit ampacity: 20 amps, Max dual element fuse size: 20, Max circuit breaker size: 20.

(2) 45 ton York Compressors:

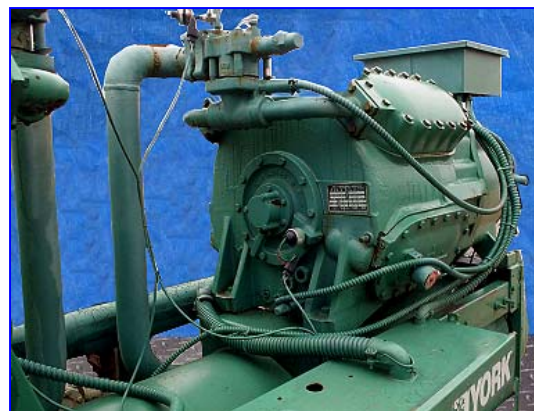
- Compressor 1: Mfg: York, Model: JS43F-M46/50S, S/N: 82009811, 460 V, 3 phase, 60 Hz, FWLRA: 397, RWLRA: 318, Volt Range: 414-506, Factory test pressure: 450 psig high, 330 psig low.
- Compressor 2: Mfg: York, Model: JS44F-M46/50S, S/N: 77310305, 460 V, 3 phase, 60 Hz, FWLRA: 397, RWLRA: 318, Volt Range: 414-506, Factory test pressure: 450 psig high, 330 psig low.

(2) Chiller Barrels:

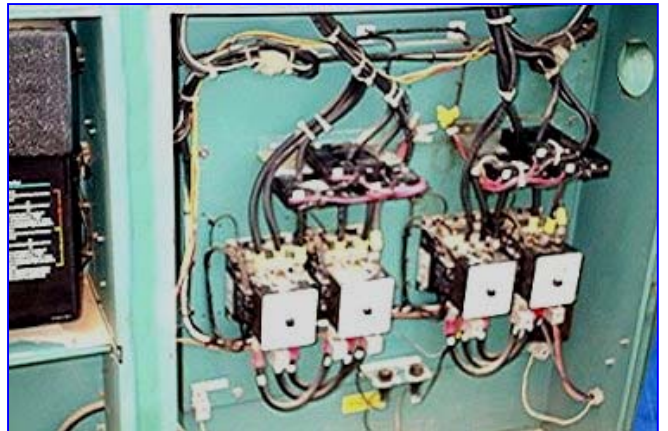
- Chiller Barrel 1: National Board No: 322, S/N: PVC-080, Yr: 1991, Shell Chamber: MAWP: 350 psi @ -20 to 250 deg F, MDMT: -20 deg F at 350 psi. Tube Chamber: MDMT: Exempt U-1 C-1.
- Chiller Barrel 2: No nameplate.

Overall dimensions: 120 in. L x 35 in. W x 73 in. H.











**YORK LIQUID CHILLER** MODEL \_\_\_\_\_ SERIAL ORDER NO. \_\_\_\_\_

REFRIGERANT: TO FACTORY TEST PRESS. \_\_\_\_\_ PSIG HIGH SIDE \_\_\_\_\_ PSIG LOW SIDE \_\_\_\_\_  
 VOLTS PHASE-HZ \_\_\_\_\_ VOLTAGE LIMITS MIN: \_\_\_\_\_ MAX: \_\_\_\_\_

USE \_\_\_\_\_ SYSTEM 1 \_\_\_\_\_ SYSTEM 2 \_\_\_\_\_ UNIT \_\_\_\_\_

FACTORY REFRIGERANT CHARGE LBS. \_\_\_\_\_ AMPS \_\_\_\_\_  
 MIN. CIRCUIT AMPACITY \_\_\_\_\_  
 MAX. DUAL ELEMENT FUSE SIZE \_\_\_\_\_ AMPS \_\_\_\_\_  
 MAX. CIRCUIT BREAKER SIZE \_\_\_\_\_

COMPRESSOR VOLTS-PHASE-HZ \_\_\_\_\_ NO. \_\_\_\_\_ RLA \_\_\_\_\_ LRA \_\_\_\_\_  
 CONDENSER FANS VOLTS-PHASE-HZ \_\_\_\_\_ NO. \_\_\_\_\_ HP \_\_\_\_\_ FLA \_\_\_\_\_ LRA \_\_\_\_\_

UNIT CONTROL SUPPLY VOLTS-PHASE-HZ \_\_\_\_\_

LOADS NO. \_\_\_\_\_ VOLTS-PHASE-HZ \_\_\_\_\_ WATTS \_\_\_\_\_ (total) \_\_\_\_\_ WATTS MAX. \_\_\_\_\_  
 FIELD CHILLER LIO. LINE HEATER \_\_\_\_\_

**YORK INTERNATIONAL CORPORATION**  
 YORK, PA. 17405

**YORK INTERNATIONAL CORPORATION**  
 YORK, PA. 17405

MODEL **JS43F-M46/50S** SERIAL NO. **82009811**

PART NO. **364-47596-024** DATE CODE **92010428**

VOLTAGE **460** PH **3** HZ **60** FLA **397** FWLRA **318** PVLRA **414-508**

VOLTAGE **380/415** PH **3** HZ **50** FLA **392** FWLRA **290** PVLRA **342-440**

THERMALLY PROTECTED  FACTORY TEST PRESSURES: PRIG **450** L.S. **330**



**LIQUID CHILLER OPTIONS**

SALES ORDER NO. 94152136-01-8

BAS INTERFACE \_\_\_\_\_

LOW AMBIENT \_\_\_\_\_

HOT GAS BY-PASS \_\_\_\_\_

CONTROL TRANSFORMER yes

SINGLE POINT WIRING \_\_\_\_\_

HEAT RECOVERY \_\_\_\_\_

LWT CONTROL \_\_\_\_\_

OPTIONAL LOADING STEPS \_\_\_\_\_

VIBRATION ISOLATORS \_\_\_\_\_

TAMPER PROTECTION \_\_\_\_\_

FLANGE KIT \_\_\_\_\_

SEQUENCE KIT \_\_\_\_\_

SUN SHIELD \_\_\_\_\_

FLOW SWITCH yes

POWER DISCONNECT \_\_\_\_\_

ANNUNCIATION ALARM \_\_\_\_\_

HIGH AMBIENT KIT \_\_\_\_\_

NOTES:  
 1. FOR SOFTWARE VERSION, SEE TEST DATA SHEET.  
 2. SOME OPTIONS ARE NOT AVAILABLE ON ALL UNITS.

DESIGN CONDITIONS  
 TR \_\_\_\_\_ GPM EVAP 275 EWT56.3 LWT45.0 AMB \_\_\_\_\_  
 COND333 EWT85 LWT94.3

**YORK INTERNATIONAL CORPORATION**