

Cleaver Brooks CB-Packaged Firetube Boiler- 60 HP

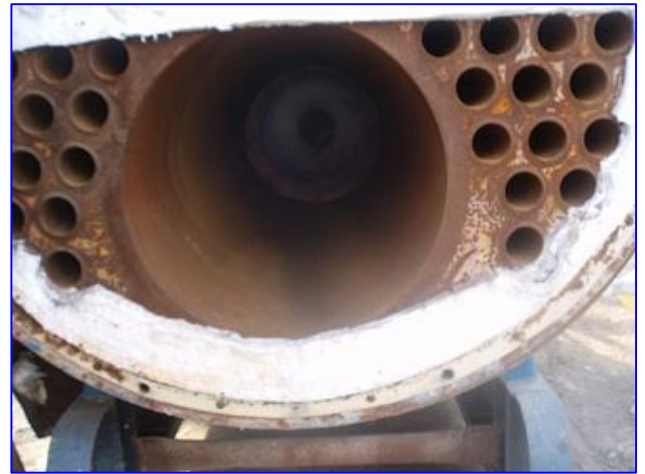
Mfg: Cleaver Brooks

Model: CB-700-60

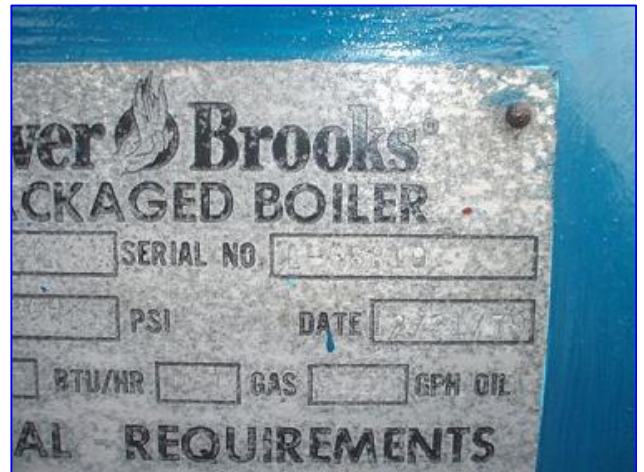
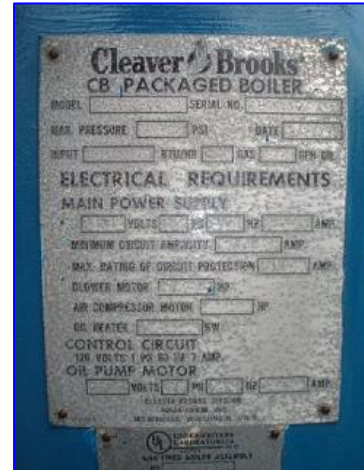
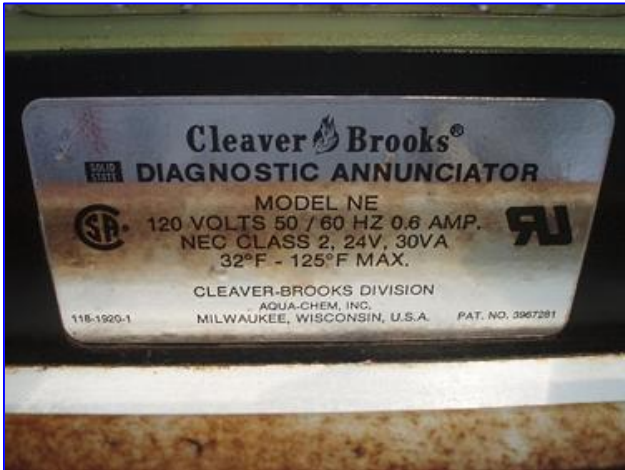
Stock No. 250.170

Serial No. L-68819

Cleaver Brooks CB-Packaged Firetube Boiler- 60 HP. Model: CB-700-60. S/N: L-68819. Input: 2,511,000 BTU/HR. Burner: natural gas. Max. pressure: 30 HW psi. Tube material: carbon steel. Number of tubes: 62. Tube dimensions: 2-1/2 in. dia. x 7 ft. 8 in. L. Heat transfer surface area: approx. 310.94 sq. ft. Tube volume: 120 gal. Power supply: 480 V, 3.5 amps, 60 Hz, 3 phase. Minimum circuit capacity: 4.5 amps. Maximum rating circuit: 14 amps. Electrical blower motor- 2 hp. A Firetube boiler is a cylindrical vessel, with the flame in the furnace and the combustion gases inside the tubes. The furnace and tubes are within a larger vessel containing the water which is converted to steam or hot water for process applications or hydronic comfort heating. Hot water is commonly used in heating applications with the boiler supplying water to the system at 180 °F to 220 °F. The operating pressure for hot water heating systems usually is 30 psig to 125 psig. Inlets: (2) 5 in. dia. flanged ports. Outlets: (1) 10 in. dia. flanged port, (1) 2 in. dia. NPT fitting (relief valve), (1) 1 in. dia. low water cut off port, (1) 2 in. dia. drain port. Overall dimensions: 10 ft. 10 in. L x 5 ft. W x 6 ft. 9 in. H.








CB PACKAGED
MODEL SERIAL N
MAX. PRESSURE PSI
INPUT BTU/HR
ELECTRICAL - REQU
MAIN POWER SUPPLY
 VOLTS PH

PACKAGED BOILER
SERIAL NO
PSI DATE
BTU/HR GAS GPH OIL
REQUIREMENTS
SUPPLY
 PH HZ AMP

ELECTRICAL - REQUIREMENTS
MAIN POWER SUPPLY
 VOLTS PH HZ A
MINIMUM CIRCUIT AMPACITY AMP
MAX. RATING OF CIRCUIT PROTECTION AMP
BLOWER MOTOR HP
AIR COMPRESSOR MOTOR HP
OIL HEATER KW
CONTROL CIRCUIT
120 VOLTS 1 PH 60 HZ 7 AMP
OIL PUMP MOTOR
 VOLTS PH HZ AMP

AIR COMPRESSOR MOTOR HP
OIL HEATER KW
CONTROL CIRCUIT
120 VOLTS 1 PH 60 HZ 7 AMP
OIL PUMP MOTOR
 VOLTS PH HZ AMP
CLEAVER BROOKS DIVISION
AQUA-CHEM, INC.
MILWAUKEE, WISCONSIN, U.S.A.
 UNDERWRITERS
LABORATORIES
INC. O
LISTED
GAS FIRED BOILER ASSEMBLY
NO.
FOR USE WITH INTEGRAL GROUP
 PRIMARY SAFETY CONTROLS

AQUA-CHEM, INC.
MILWAUKEE, WISCONSIN, U.S.A.
 UNDERWRITERS
LABORATORIES
INC. O
LISTED
GAS FIRED BOILER ASSEMBLY
NO.
FOR USE WITH INTEGRAL GROUP
 PRIMARY SAFETY CONTROLS
Cleaver Brooks
THIS APPARATUS IS COVERED BY
ONE OR MORE OF THE FOLLOWING