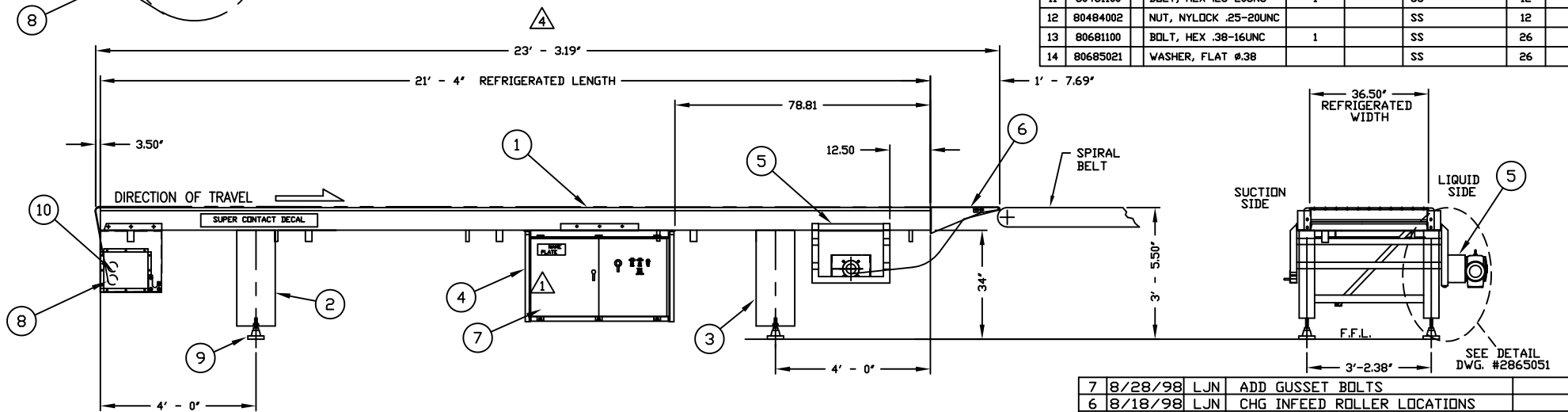


PIPE AND INSULATION SUGGESTIONS
 ATTACH 90° SHORT RADIUS ELBOW
 2 INCHES BELOW FREEZER PLATE &
 RUN PIPE OUT TO 16 INCHES AND
 ELBOW TOWARDS OUTSIDE OF FREEZER.
 USE 1 INCH THICKNESS INSULATION
 FROM FREEZER PLATE TO 15 INCHES
 FROM FIRST ELBOW. THIS WILL ALLOW
 ADEQUATE SPACE FOR CHANGING ROLLS
 OF FILM.



| PARTS LIST | | | | | | | | |
|------------|-----------|-----|-----------------------|--------|--------|-------------|-----|-----|
| ITEM NO. | PART # | VAR | DESCRIPTION | LENGTH | WIDTH | REMARKS | QTY | CAT |
| 1 | 2865046 | | CONTACT FREEZER | | | | 1 | |
| 2 | 2865054 | | INFEED LEGS | | | | 1 | |
| 3 | 2865060 | | TAKE-UP LEGS | | | | 1 | |
| 4 | 2865047 | | CONTROL ASSY. | | | | 1 | |
| 5 | 2865003 | | DRIVE ASSY. | | | | 1 | |
| 6 | 2865058 | | NOSE SECTION ASSY. | | | | 1 | |
| 7 | 422410ASS | | NBMA 4X ENCLOSURE | | | DELTA | 1 | |
| 8 | 2865081 | | ASSY., INFEED | | | | 1 | |
| 9 | | | LEVELER W/ANCHOR HOLE | 7.75 | .75-10 | | 4 | |
| | | | VG-511-02-S34-L7 | | | VALUE GUIDE | | |
| 10 | 999920098 | | WELD'T INFEED GUARD | | | | 1 | |
| 11 | 80481100 | | BOLT, HEX .25-20UNC | 1 | | SS | 12 | |
| 12 | 80484002 | | NUT, NYLOCK .25-20UNC | | | SS | 12 | |
| 13 | 80681100 | | BOLT, HEX .38-16UNC | 1 | | SS | 26 | |
| 14 | 80685021 | | WASHER, FLAT #.38 | | | SS | 26 | |

NOTE: CENTER SUPER CONTACT DECAL OVER INFEED LEG

APPROVAL

AS SUBMITTED

WITH NOTED CHANGES

RESUBMIT WITH NOTED CHANGES

| | | | | | | | | |
|---|---------|-----|------------------------------|--|--|--|--|--|
| 7 | 8/28/98 | LJN | ADD GUSSET BOLTS | | | | | |
| 6 | 8/18/98 | LJN | CHG INFEED ROLLER LOCATIONS | | | | | |
| 5 | 8/3/98 | LJN | ADD INFEED GUARD | | | | | |
| 4 | 7/22/98 | RMA | CHG 23'-3 3/16" TO 23'-4.88" | | | | | |
| 3 | 7/17/98 | LJN | DELETE ITEM #9 | | | | | |
| 2 | 7/15/98 | LJN | DELETE ITEM #7 | | | | | |
| 1 | 1/8/98 | LJN | CHG ENCL FRAME | | | | | |

northfield Freezing Systems
YORK INTERNATIONAL
 1719 CANNON ROAD * P.O. BOX 98 * NORTHFIELD, MN. 55057

OCEAN BEAUTY SEAFOODS
SEATTLE, WA
ASSEMBLY, SUPER CONTACT - MARK III

| | | | |
|------------------|-------------------|-----------------|--------------|
| DRAWN BY: LJN | DATE: 11/11/97 | JOB NO: 2865 | DRAWING NO.: |
| CHECKED BY: | DATE: | SCALE: NTS | 052 |