

Waukesha U-30 Positive Displacement Pump

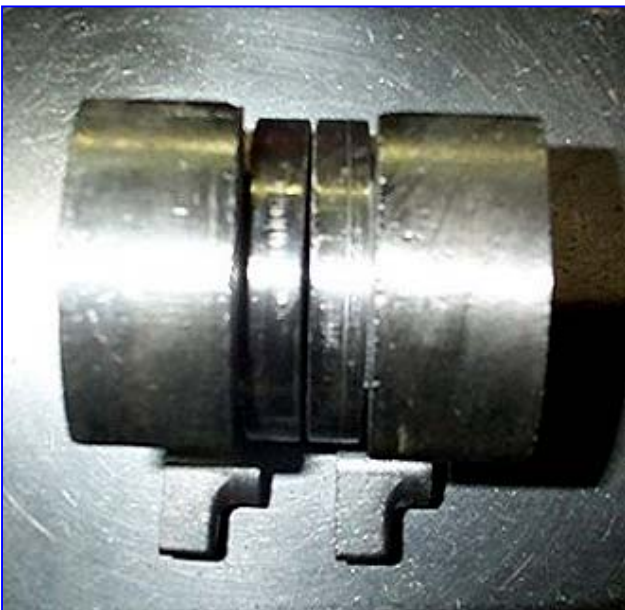
Mfg: Waukesha

Model: U-30

Stock No. 29.275

Serial No. DO 86559 SS

Waukesha U-30 Positive Displacement Pump. S/N DO 86559 SS. Displacement per revolution: 0.060 gallons. Nominal capacity: 36 gpm. Pressure range: 200 psi. Maximum rpm: 600. A-3 sanitary rated. Single o-ring seals. 316 stainless steel body, cover and shafts. Components can be easily disassembled for COP cleaning. Ideal for the following industries: bakery, beverage, canning, confectionary, cosmetics, dairy, meat packing, pharmaceutical and aseptic. Inlets/outlets: (2) 1-1/2 in. dia. threaded male pipe. Overall dimensions: 15 in. L x 9 in. W x 10-1/2 in. H.



Universal I Series Specifications

Universal I Models

MODEL	DISPLACEMENT PER REVOLUTION	NOMINAL CAPACITY* TO	INLET/OUTLET	OPTIONAL INLET/OUTLET	PRESSURE RANGE UP TO**	MAXIMUM RPM	TEMP RANGE**
006-U1	.0082 GAL. (.031 LITER)	6 GPM (1.3 m ³ /hr.)	1"	1½"	200 PSI (13.8 bar)	800	(-)40°F /C to 300°F (149°C)
015-U1	.0142 GAL. (.054 LITER)	9 GPM (2.0 m ³ /hr.)	1½"	—	200 PSI (13.8 bar)	700	
018-U1	.029 GAL. (.110 LITER)	17 GPM (3.8 m ³ /hr.)	1½"	2"	200 PSI (13.8 bar)	600	
030-U1	.060 GAL. (.227 LITER)	36 GPM (8.2 m ³ /hr.)	1½"	2"	200 PSI (13.8 bar)	600	
060-U1	.153 GAL. (.579 LITER)	90 GPM (20.4 m ³ /hr.)	2½"	3"	200 PSI (13.8 bar)	600	
130-U1	.254 GAL. (.961 LITER)	150 GPM (34.1 m ³ /hr.)	3"	—	200 PSI (13.8 bar)	600	
220-U1	.522 GAL. (1.976 LITER)	310 GPM (70.4 m ³ /hr.)	4"	—	200 PSI (13.8 bar)	600	
320-U1	.754 GAL. (2.854 LITER)	450 GPM (102 m ³ /hr.)	6"	—	200 PSI (13.8 bar)	600	

Rectangular Flange Models

MODEL	DISPLACEMENT PER REVOLUTION	NOMINAL CAPACITY TO	INLET W x L INCHES	OUTLET	PRESSURE RANGE UP TO**	MAXIMUM RPM	TEMP RANGE**
014-U1	.0142 GAL. (.054 LITER)	5 GPM (1.1 m ³ /hr.)	1.5 x 4.75	1½"	200 PSI (13.8 bar)	400	(-)40°F /C to 300°F (149°C)
024-U1	.029 GAL. (.110 LITER)	11 GPM (2.5 m ³ /hr.)	1.31 x 4.93	1½" (2")	200 PSI (13.8 bar)	400	
034-U1	.060 GAL. (.227 LITER)	24 GPM (5.4 m ³ /hr.)	1.75 x 6.75	2"	200 PSI (13.8 bar)	400	
064-U1	.153 GAL. (.579 LITER)	60 GPM (13.6 m ³ /hr.)	2.24 x 8.82	2½" (3")	200 PSI (13.8 bar)	400	
134-U1	.254 GAL. (.961 LITER)	100 GPM (22.7 m ³ /hr.)	2.97 x 9.25	3"	200 PSI (13.8 bar)	400	
224-U1	.522 GAL. (1.976 LITER)	200 GPM (45.4 m ³ /hr.)	3.87 x 11	4"	200 PSI (13.8 bar)	400	
324-U1	.754 GAL. (2.854 LITER)	300 GPM (68.1 m ³ /hr.)	5 x 17.38	6"	200 PSI (13.8 bar)	400	

Aseptic Models

MODEL	DISPLACEMENT PER REVOLUTION	NOMINAL CAPACITY* TO	INLET/OUTLET	PRESSURE RANGE UP TO	MAXIMUM RPM	TEMP RANGE**
033A	.051 GAL. (.193 LITER)	30 GPM (6.8 m ³ /hr.)	1½"	225 PSI (15.5 bar)	600	(-)40°F /C to 300°F (149°C)
133A	.205 GAL. (.776 LITER)	120 GPM (27.3 m ³ /hr.)	3"	225 PSI (15.5 bar)	600	
223A	.440 GAL. (1.666 LITER)	260 GPM (59.1 m ³ /hr.)	4"	225 PSI (15.5 bar)	600	
323A	.616 GAL. (2.332 LITER)	360 GPM (81.8 m ³ /hr.)	6"	225 PSI (15.5 bar)	600	

*For capacities above 450 to 935 GPM, see bulletin FH-1725 on 420/520 UHC (ECP Rotors) and FH-1733 on 420/520 UHCL (Lobe Rotors).

**Contact application engineering for higher pressure or higher temperature applications.

Note: Universal II (Bulletin FH-1723) and Universal Lobe (Bulletin FH-1733) models are available for CIP installations, applications up to 500 psi, and extended run services not needing frequent teardown for cleaning.