

Waukesha Model 130 Positive Displacement Pump

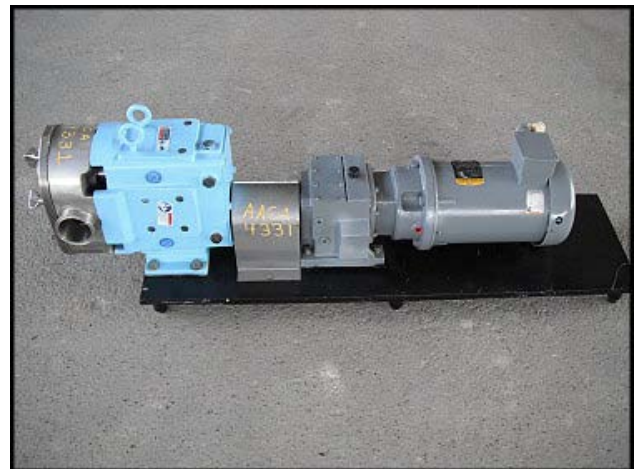
Mfg: Waukesha

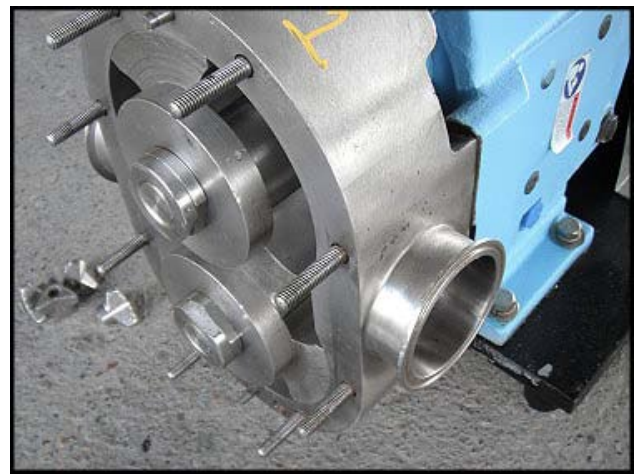
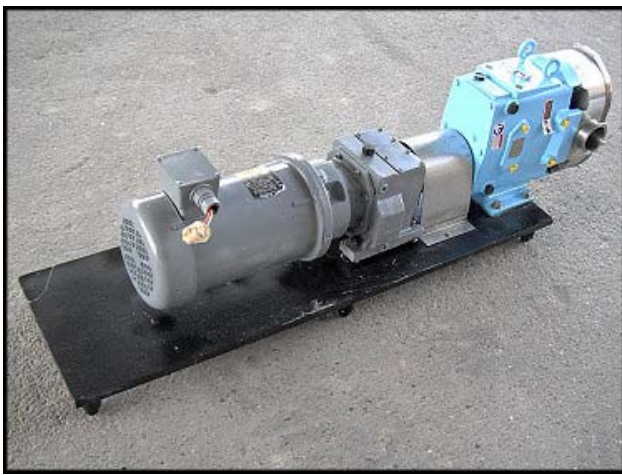
Model: 130 08

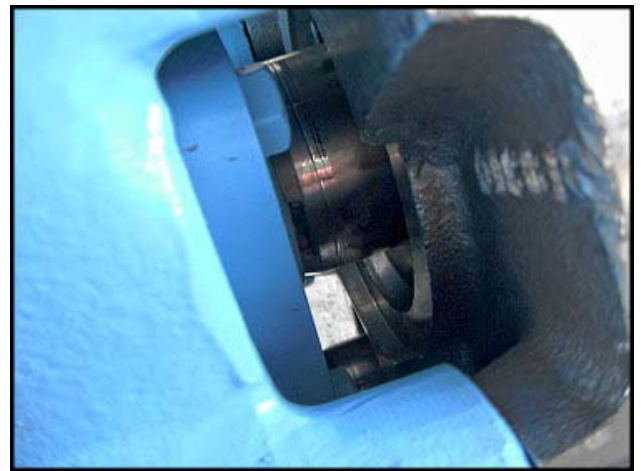
Stock No: AAC4331.31

Serial No: 1000002114303

Waukesha Model 130 Positive Displacement Pump. Model: 130 08. S/N: 1000002114303. Flow rate for a new pump is 140 gpm at max rpm of 600. Discuss with salesperson your process and product to determine if this pump should handle your specific duty. Pump currently has O-ring seals. Drive and pump seals can be changed to suit your application. Baldor Motor, 5 hp, 208-230/460 V, 15-13.2/6.6 amps, 1725 rpm, 184TC, 60 Hz, 3 phase. Inlet/outlet: 2 ½ in. S-line fittings. Overall dimensions: 4 ft. 8 in. L x 1 ft. 3 in. W x 1 ft. 6 in. H.







BALDOR • RELIANCE
INDUSTRIAL MOTOR

CAT. NO.	VM3615T		
SPEC.	36A03W415		
HP	5		
VOLTS	208-230/460		
AMPS	15-13.2/6.6		
R.P.M.	1725		
FRAME	184TC	HZ 60	PH 3
SER. F.	1.15	CODE J	DES B CLASS F
NEMA NOM. EFF.	85.5 %	P.F.	80 %
RATING	40C AMB-CONT		
	USABLE AT 208V 15 A		
BEARINGS	DE 6206	ODE 6205	
ENCL.	TEFC	SN	F1003241930

BALDOR ELECTRIC CO. • SMITH, AR. MFG. IN U.S.A.
Pat. 1,224,666