

1997 Carrier Air Cooled Chiller - 100 Tons

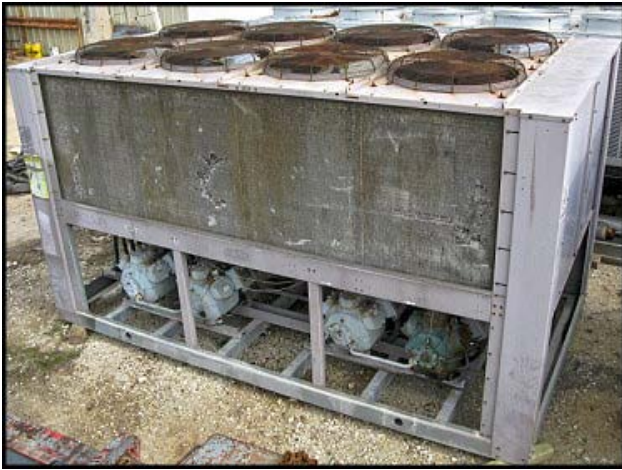
Mfg: Carrier

Model: 30GT100 610KA

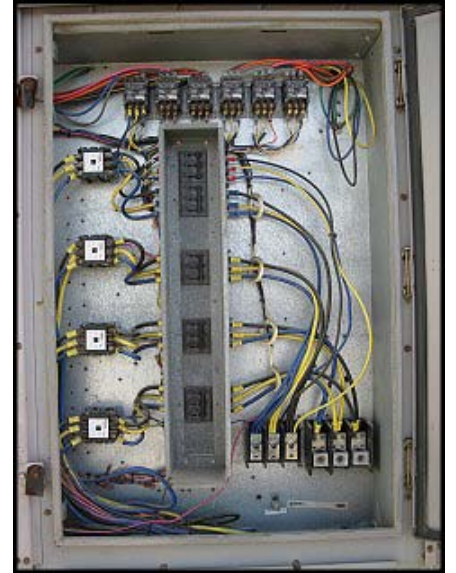
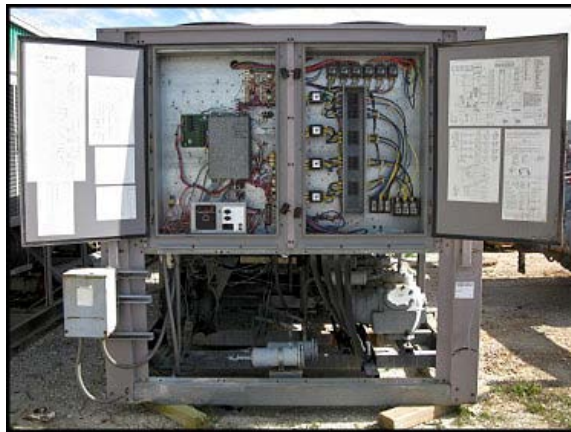
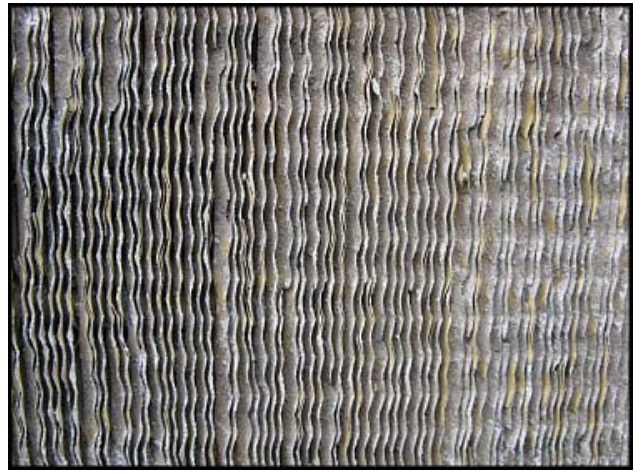
Stock No: ABCC203.50

Serial No: 1897F70945

1997 Carrier Air Cooled Chiller. Model: 30GT100 610KA. Serial No: 1897F70945. Rated nominal cooling capacity: 100 tons. Refrigerant: R-22. Respective high and low design/test pressures: 450/278 psi. (3) Carlyle compressors. Model: 06EF275310: 208/230-460V, 60 Hz, 3 phase, or 400V, 50 Hz, 3 phase. (1) Carlyle compressor. Model: 06E6265310: 230/460V, 60 Hz, 3 phase. (8) fans, 6 blades, 30 in. diameter, 1.0 hp, 460V, 60 Hz, 3 phase. Overall dimensions: 15 ft. 2 in. L x 8 ft. 2 in. W x 8 ft. 2 in. H.









Carrier 30GT-100---610KA
1897F70945

MODEL 30GT-100---610KA SERIAL 1897F70945 FACTORY CHARGED

QTY	VOLTS AC	PH	HZ	RLA	LRA	REFRIG. SYSTEM	REFRIG. SYSTEM
COMP 2	460	3	60	43.6	223	70	11.9 kg
COMP 2	460	3	60	46.8	253	105	17.7 kg

DESIGN / TEST PRESSURE GAGE HIGH PSI 450 kPo 3103 LOW PSI 276 kPo 1917

FAN MOTORS	QTY	VOLTS AC	PH	HZ	FLA	HP	kw OUT
OUTDOOR	6	460	3	60	3.3	1	.746
OUTDOOR	2	460	3	60	2.8	1	.746

OTHER: HEATERS: TOTAL: ONLY SUITABLE FOR OUTDOOR USE

POWER SUPPLY: 460 VOLTS 3 PH 60 HZ EXT. MIN. CIRCUIT AMPS: 217.9 MAX. OVERCURRENT PROTECTION: 250 AMP

PERMISSIBLE VOLTAGE FLUCTUATION: 50% MAX 414 MIN 1 CONTROL POWER SUPPLY: 115 VOLTS 1 PH 60 HZ 30 AMPS 2 FUSE OR HACR TYPE CIRCUIT BREAKER

MADE IN U.S.A. CHARGE SYSTEM PER INSTALLATION INSTRUCTIONS 99NA504514

UL 57R9 LISTED
LIQUID CHILLER
SELF-CONTAINED
UNIT

Carlyle MODEL NUMBER 06EF275310

6EACCC1C2H30 NTR C490394

VOLTS	PH	HZ	VOLTS (MIN/MAX)	RLA	LRA
208/230	3	60	187/264		506.0
460	3	60	414/528		253.0
480	3	50	342/457		253.0

MADE IN U.S.A.

1597J02323 6E2XXX

MODEL NO. 06E6265310

SERIAL NO. 10090840F

VOLTS PHASE CYC. R.L.A.MPS.

230/460 3 60

R.A.MPS. SYN.R.P.M. REFRIGERANT ONLY

RE-MFD.