

AGS 160CM through AGS 180CM, Standard Efficiency (Remote Evaporator)

| Data | AGS model number | | | | | |
|------------------------------------------------------------------------------|----------------------------------------|------------|----------------------------------------|------------|----------------------------------------|------------|
| | 160CM | | 170CM | | 180CM | |
| | Circuit 1 | Circuit 2 | Circuit 1 | Circuit 2 | Circuit 1 | Circuit 2 |
| Basic data | | | | | | |
| Unit operating charge lb (kg)* | 131 (59) | 131 (59) | 159 (72) | 159 (72) | 171 (78) | 171 (78) |
| Cabinet dimensions L x W x H, in (mm) | 187 x 89 x 101 (4750 x 2261 x 2565) | | 225 x 89 x 101 (5715 x 2261 x 2565) | | 225 x 89 x 101 (5715 x 2261 x 2565) | |
| Unit operating weight, lb (kg) | 8100 (3677) | | 8952 (4064) | | 8952 (4064) | |
| Unit shipping weight, lb (kg) | 8100 (3677) | | 8952 (4064) | | 8952 (4064) | |
| Economizer | 1276 (579) | | 1596 (725) | | 1596 (725) | |
| Compressors, screw, semi-hermetic | | | | | | |
| Nominal capacity, tons (kW)** | 70 (246) | 85 (299) | 85 (299) | 85 (299) | 95 (334) | 95 (334) |
| Condensers, high efficiency fin and tube type with integral subcooler | | | | | | |
| Pumpdown capacity, lb (kg) | 358 (163) | 358 (163) | 399 (181) | 399 (181) | 399 (181) | 399 (181) |
| Condenser fans, direct drive propeller type | | | | | | |
| No. of fans/circuit—fan dia., in (mm) | 8—30 (762) | | 10—30 (762) | | 10—30 (762) | |
| No. of motors—hp (kW) | 8—2 (1.5) | | 8—2 (1.5) | | 8—2 (1.5) | |
| Fan and motor rpm, 60 Hz | 1140 | | 1140 | | 1140 | |
| 60 Hz fan tip speed, fpm (m/s) | 8950 (4224) | | 8950 (4224) | | 8950 (4224) | |
| 60 Hz total unit airflow, cfm (L/s) | 86,900 (41,020) | | 108,630 (51,280) | | 108,630 (51,280) | |
| Evaporator, direct expansion shell and tube | | | | | | |
| Shell dia. tube length, in (mm) | 19.4 x 82.4 (493 x 2093) | | 19.4 x 105.1 (493 x 2670) | | 19.4 x 105.1 (493 x 2670) | |
| Unit operating weight, lb (kg) | 1916 (870) | | 2283 (1037) | | 2283 (1037) | |
| Unit shipping weight, lb (kg) | 1224 (556) | | 1400 (636) | | 1400 (636) | |
| Evaporator R-134a charge lb (kg) | 2.53 (1.1) | 2.53 (1.1) | 3.16 (1.4) | 3.16 (1.4) | 3.16 (1.4) | 3.16 (1.4) |
| Water volume, gallons (L) | 83 (314) | | 106 (401) | | 106 (401) | |
| Max. water pressure, psi (kPa) | 152 (1048) | | 152 (1048) | | 152 (1048) | |
| Max. refrigerant press., psi (kPa) | 352 (2427) | | 352 (2427) | | 352 (2427) | |

AGS 190CM through AGS 210CM, Standard Efficiency (Remote Evaporator)

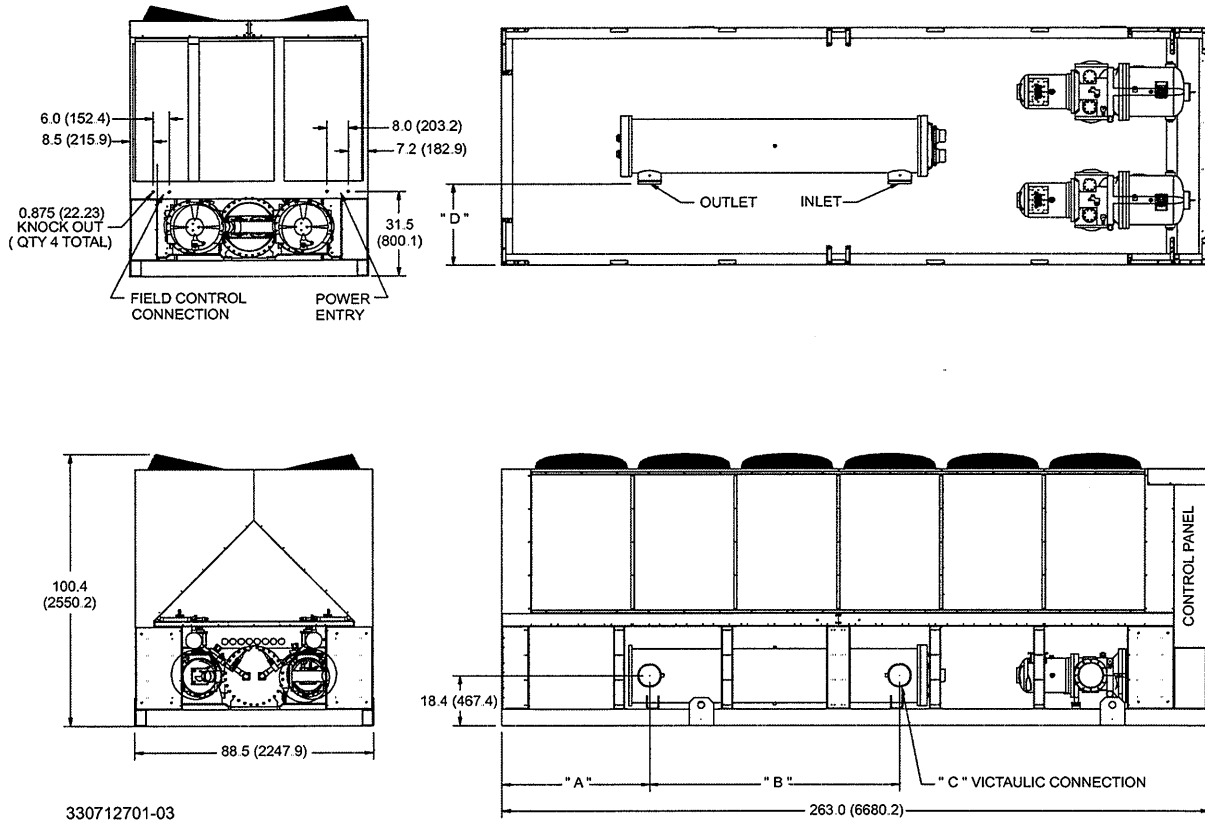
| Data | AGS model number | | | |
|------------------------------------------------------------------------------|-------------------------------------|------------|-------------------------------------|------------|
| | 190CM | | 210CM | |
| | Circuit 1 | Circuit 2 | Circuit 1 | Circuit 2 |
| Basic data | | | | |
| Unit operating charge, lb (kg)* | 172 (78) | 172 (78) | 201 (91) | 201 (91) |
| Cabinet dimensions L x W x H, in (mm) | 225 x 89 x 101 (5715 x 2261 x 2565) | | 263 x 89 x 101 (6680 x 2261 x 2565) | |
| Unit operating weight, lb (kg) | 8952 (4064) | | 9571 (4345) | |
| Unit shipping weight, lb (kg) | 8952 (4064) | | 9571 (4345) | |
| Add for copper fins, lb (kg) | 1596 (725) | | 1916 (870) | |
| Economizer | Yes | | Yes | |
| Compressors, screw, semi-hermetic | | | | |
| Nominal capacity, tons (kW)** | 95 (334) | 95 (334) | 95 (334) | 95 (334) |
| Condensers, high efficiency fin and tube type with integral subcooler | | | | |
| Pumpdown capacity, lb (kg) | 399 (181) | 399 (181) | 438 (199) | 438 (199) |
| Condenser fans, direct drive propeller type | | | | |
| No. of fans/circuit—fan dia., in (mm) | 10—30 (762) | | 12—30 (762) | |
| No. of motors—hp (kW) | 10—2 (1.5) | | 12—2.5 (1.9) | |
| Fan and motor rpm, 60 Hz | 1140 | | 1140 | |
| 60 Hz fan tip speed, fpm (m/s) | 8950 (4224) | | 8950 (4224) | |
| 60 Hz total unit airflow, cfm (L/s) | 108,630 (51,280) | | 130,360 (61,530) | |
| Evaporator, flooded shell and tube | | | | |
| Shell dia. tube length, in (mm) | 19.4 x 105.1 (493 x 2670) | | 19.4 x 105.1 (493 x 2670) | |
| Unit operating weight, lb (kg) | 2281 (1036) | | 2281 (1036) | |
| Unit shipping weight, lb (kg) | 1437 (652) | | 1437 (652) | |
| Evaporator R-134a charge lb (kg) | 3.63 (1.6) | 3.63 (1.6) | 3.63 (1.6) | 3.63 (1.6) |
| Water volume, gallons (L) | 106 (401) | | 104 (392) | |
| Max. water pressure, psi (kPa) | 152 (1048) | | 152 (1048) | |
| Max. refrigerant press., psi (kPa) | 352 (2427) | | 352 (2427) | |

* Charge quantity does not include field piping.

** Nominal capacity based on 95°F ambient air temperature and 54°F/44°F water range.

| | | |
|--------------------------|-------------------------------|----------------------------|
| Certified Drawing | | CD: AGS120-210CS-CH |
| Job Name: | Group: Chiller | |
| | Type: AGS 120-210CS/CH | |
| | Date: June 2005 | |
| Tag / Item No.: | Supersedes: April 2005 | |

Dimensions: AGS 165C –210C Packaged Chiller

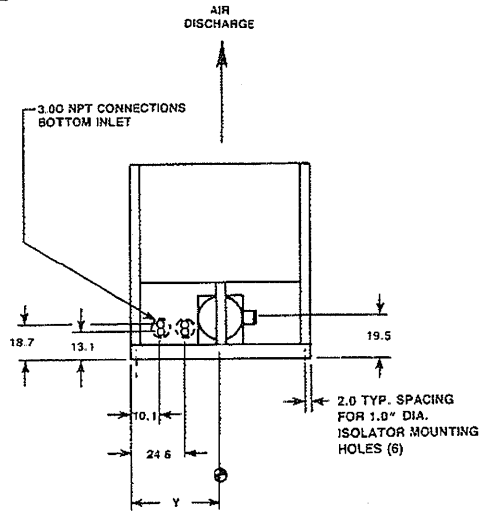
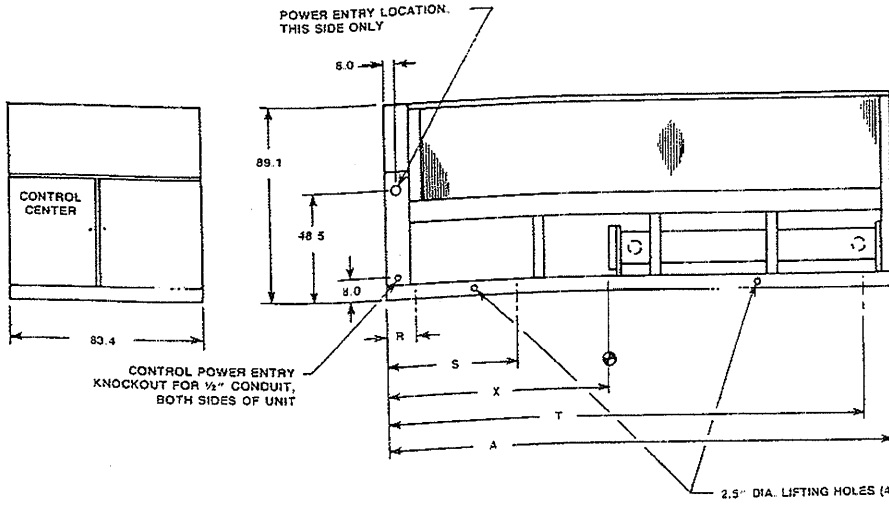
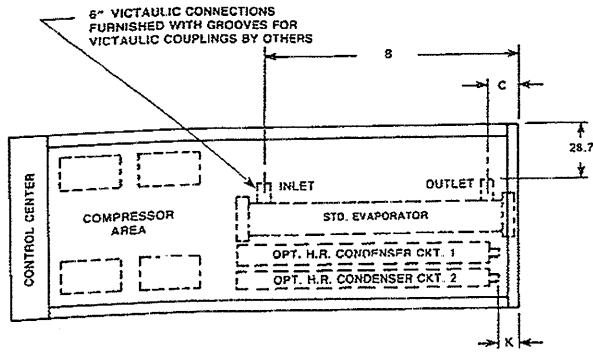


| UNIT SIZE | Dimensions In (mm) | | | |
|----------------|--------------------|---------------|-----------|--------------|
| | "A" | "B" | "C" | "D" |
| AGS165C | 54.9 (1394.5) | 92.9 (2359.7) | 8 (203.2) | 30.1 (764.5) |
| AGS175C | 54.9 (1394.5) | 92.9 (2359.7) | 8 (203.2) | 30.1 (764.5) |
| AGS195C | 54.9 (1394.5) | 92.9 (2359.7) | 8 (203.2) | 30.1 (764.5) |
| AGS210C | 54.9 (1394.5) | 92.9 (2359.7) | 8 (203.2) | 30.1 (764.5) |

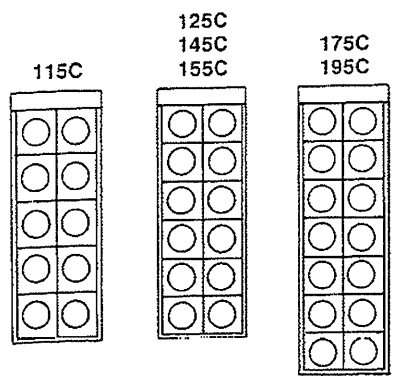


ALR-115C thru 195C

All Dimensions in Inches



FAN ARRANGEMENTS



| ALR MODEL | LENGTH A | EVAPORATOR WATER CONN. (1) | | K | CENTER OF GRAVITY | | | | ISOLATOR LOCATIONS | | |
|-----------|----------|----------------------------|------|------|-------------------|------|---------------------------------|------|--------------------|------|-------|
| | | B | C | | STD. UNIT | | OPT. H ₂ O COND. (2) | | R | S | T |
| | | | | | X | Y | X | Y | | | |
| 115C | 228.7 | 117.6 | 13.8 | 0.0 | 109.5 | 41.7 | 118.2 | 37.4 | 13.0 | 58.0 | 215.0 |
| 125C | 228.7 | 117.6 | 13.8 | 0.0 | 104.3 | 41.7 | 116.4 | 37.5 | 13.0 | 58.0 | 215.0 |
| 145C | 228.7 | 117.6 | 13.8 | 0.0 | 104.9 | 41.7 | 117.1 | 37.4 | 13.0 | 58.0 | 215.0 |
| 155C | 228.7 | 118.5 | 12.9 | 0.0 | 105.2 | 41.7 | 117.7 | 37.5 | 13.0 | 58.0 | 215.0 |
| 175C | 263.4 | 153.2 | 47.6 | 32.4 | 114.2 | 41.7 | 123.9 | 37.8 | 13.0 | 95.0 | 249.7 |
| 195C | 263.4 | 153.2 | 47.6 | 32.4 | 113.1 | 41.7 | 122.8 | 37.9 | 13.0 | 95.0 | 249.7 |

(1) EVAPORATOR CONNECTIONS: All connections NPS steel pipe. Connections are furnished with grooves for victaulic couplings by others.
 (2) Includes both circuits.