

1994 Baltimore Aircoil Company Cooling Tower – 130 Tons

Mfg: Baltimore Aircoil Company

Model: 3130

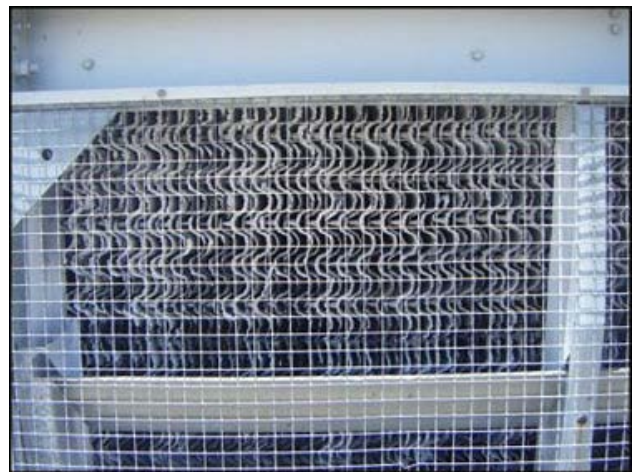
Stock No: ADSP301.15

Serial No: 94600442

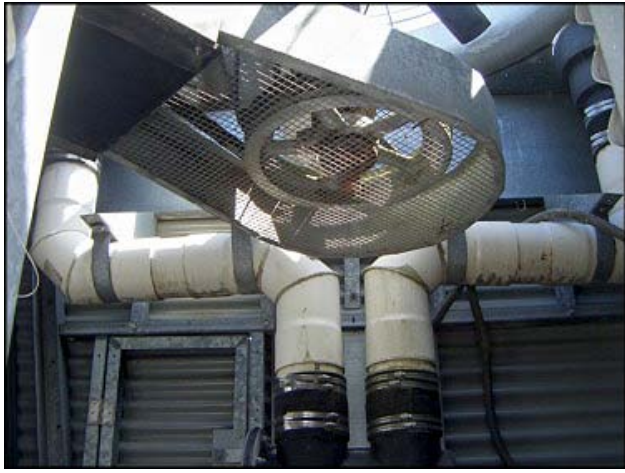
1994 Baltimore Aircoil Company Cooling Tower. Model: 3130. S/N: 94600442. Rated capacity: 130 nominal tons for respective entering and leaving water temperatures of 95°F and 85°F at a 78°F wet bulb with 390 gpm flow. (1) 5 ft. dia fan. Fan belt: 2B-79. US electric fan motor, 5 hp, 1735 rpm, 230/460 V, 13.8/6.9 amps, 60 Hz, 3 phase. Driver pulley dia: 5 in. Driven pulley dia. 16 in. Ratio 3.2. Final rpm: 542. (1) 1 ft. 5 in. W x 2 ft. 10 in. H. access door. (1) 1 ft. 5 in. W x 1 ft. 6 in. H access door. Inlets: (1) 4 in. dia. port, (1) 1 in. dia. MNPT water make up port. Outlet: (1) 4 in. dia. port, (1) 3 ½ in. dia. FNPT overflow port. Listed shipping weight: 4140 lbs. Overall dimensions: 17 ft. 6 in. L x 7 ft. 2 in W x 9 ft. H.(BE).



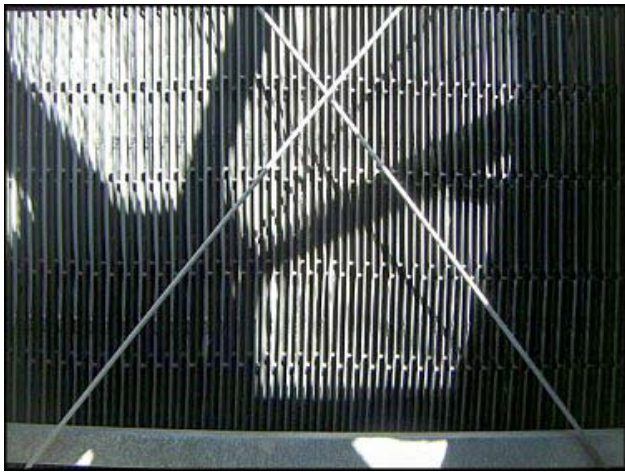


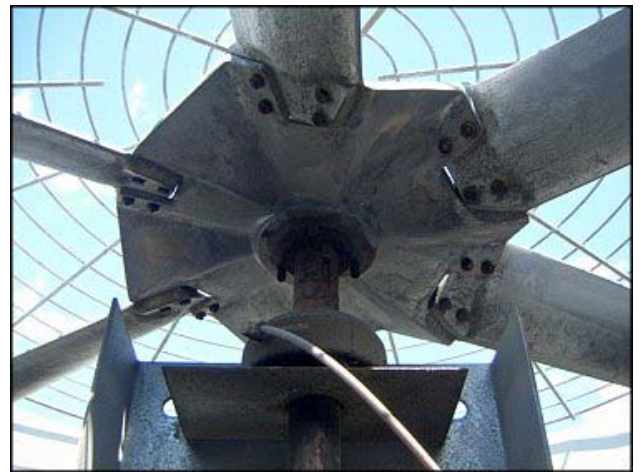
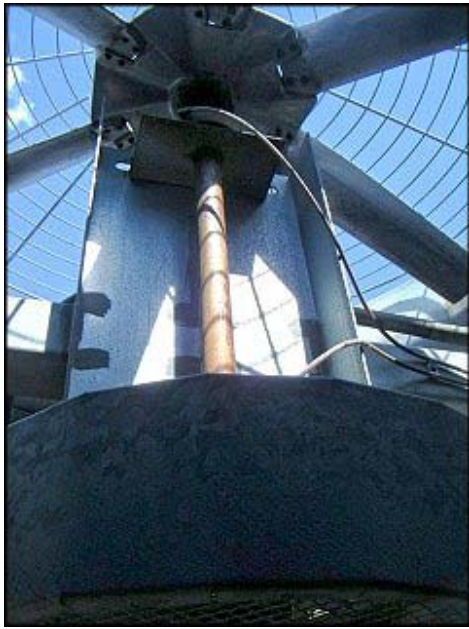


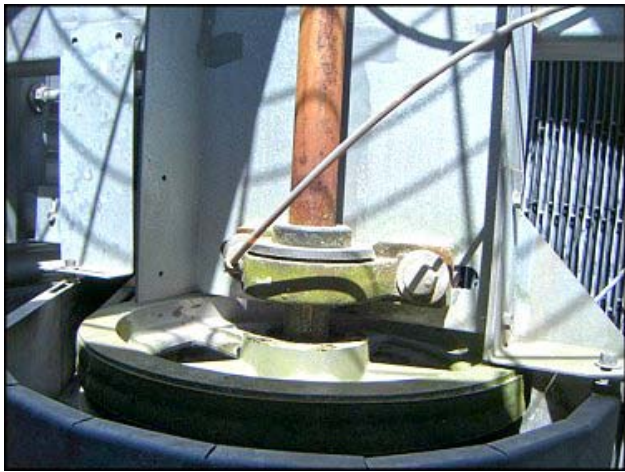












Baltimore Aircoil Company P.O. BOX 317
PANTON, D. 09057
(217) 378-2911

BAC MODEL NO. 3130
SERIAL NO. 94600442
BELT NO. 2B 79

MANUFACTURED UNDER ONE OR MORE OF THE FOLLOWING U.S. PATENT NUMBERS:

3,922,153	4,490,312	4,691,769	4,964,279
3,963,464	4,518,544	4,699,211	4,966,007
4,129,627	4,530,804	4,737,321	4,976,895
4,181,691	4,540,637	4,749,307	5,028,357
4,196,157	4,543,218	4,831,831	5,038,574
4,265,645	4,568,022	4,873,028	5,150,581
4,361,426	4,592,878	4,891,169	5,155,961
4,382,046	4,601,684	4,913,710	
4,422,983	4,637,903	4,951,739	
4,481,155	4,683,101	4,957,276	

PLUS OTHER PATENTS PENDING

2707797A REV. C



BACross
The standard polypropylene heat transfer deck surface is designed for maximum heat transfer, must not erode, and has excellent cooling efficiency.

Baltimore Aircoil Company P.O. BOX 317
PANTON, D. 09057
(217) 378-2911

BAC MODEL NO. 3130
SERIAL NO. 94600442
BELT NO. 2B 79

MANUFACTURED UNDER ONE OR MORE OF THE FOLLOWING U.S. PATENT NUMBERS:

2707797A REV. C

MANUFACTURER'S PUBLISHED THERMAL PERFORMANCE IS CERTIFIED BY THE COOLING TOWER INSTITUTE UNDER THE PROVISIONS OF STD-201 (91).

CERTIFICATION VALIDATION NUMBER: 10304011-1000000

BACross WET DECK SURFACE (PATENTED)

The standard polypropylene BACross wet deck surface is designed for maximum heat transfer. With built-in proper sealants, the entering water temperature must not exceed 120°F or damage to the wet deck material may occur, resulting in lost cooling efficiency.

2706729A

MANUFACTURED UNDER ONE OR MORE OF THE FOLLOWING U.S. PATENT NUMBERS:

3,922,153	4,490,312	4,691,769	4,964,279
3,963,464	4,518,544	4,699,211	4,966,007
4,129,627	4,530,804	4,737,321	4,976,895
4,181,691	4,540,637	4,749,307	5,028,357
4,196,157	4,543,218	4,831,831	5,038,574
4,265,645	4,568,022	4,873,028	5,150,581
4,361,426	4,592,878	4,891,169	5,155,961
4,382,046	4,601,684	4,913,710	
4,422,983	4,637,903	4,951,739	
4,481,155	4,683,101	4,957,276	

PLUS OTHER PATENTS PENDING

2706729A

BACross WET DECK SURFACE (PATENTED)

The standard polypropylene BACross wet deck surface is designed for maximum heat transfer. With built-in proper sealants, the entering water temperature must not exceed 120°F or damage to the wet deck material may occur, resulting in lost cooling efficiency.

2706729A

CHLORINATED WATER QUALITY GUIDELINES
For units constructed with GFR Reinforced Resin Deck Panels:
- A water treatment program to control biological contamination is required for all installations. Additional treatment is required for units and systems that are continuously operating under the conditions:
- Concentration of total dissolved solids must be controlled, per the following table. A sample portion of the circulating water must be analyzed.
- pH must be maintained between 7.0 and 8.0.
- Total water treatment should not be used and the following:
- Bleach (sodium hypochlorite) is not recommended.
- Do not use "shock" and "bleach" treatments for water quality.
- Install a permanent water treatment system for specific program requirements.

2706729A

CAUTION
TO SAFEGUARD AGAINST EQUIPMENT INJURY AND PERSONNEL INJURY, INSTALLATION MUST BE ACCORDING TO THE LOCATION AND INSTALLATION INSTRUCTIONS. DO NOT REMOVE.

MADE WITH PRIDE IN AMERICA BY PEOPLE WHO CARE

BALL BEARING LUBRICATING INSTRUCTIONS

CAUTION

TO SAFEGUARD THE PUBLIC FROM POSSIBLE INJURY AND TO PREVENT VANDALISM, THIS EQUIPMENT AND THE PREMISES ON WHICH IT IS INSTALLED MUST BE PROTECTED AND SECURED AGAINST ACCESS BY UNAUTHORIZED PERSONNEL AS APPROPRIATE FOR ELECTRICAL/MECHANICAL EQUIPMENT AND THE PHYSICAL LOCATION THEREOF.

DO NOT REMOVE OR DEFACE THIS LABEL 270938 P6 REV A

DANGER

FANS ROTATING OVERHEAD

FANS MAY START AUTOMATICALLY

LOCK FAN MOTOR DISCONNECT SWITCH IN OFF POSITION BEFORE SERVICING

DO NOT REMOVE OR DEFACE THIS LABEL 270990PA

DO NOT CHANGE THE SPEED OF THIS FAN WITHOUT FIRST CONSULTING BALTIMORE AIRCOIL COMPANY.

A CHANGE IN FAN ROTATIONAL SPEED FROM THE FACTORY SETTING MAY CAUSE OPERATION OF THE FAN AT A "CRITICAL SPEED" WHICH COULD RESULT IN A FAN FAILURE WITH POSSIBLE SERIOUS PERSONAL INJURY.

TO PREVENT FREEZING OF WATER IN INTERNAL PIPING (SEE FIG. 1 BELOW) DURING COLD WEATHER (TEMPERATURE MAY FALL BELOW 32°F/0°C), ONE OF THE FOLLOWING STEPS IS RECOMMENDED IF THE SYSTEM PIPING CONTAINS A CHECK VALVE WHICH PREVENTS FREE DRAINING OF THE INTERNAL PIPING.

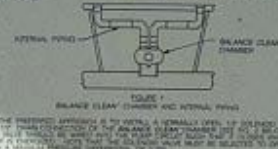


FIGURE 1
BALANCE CLEAN CHAMBER AND INTERNAL PIPING

FIGURE 2
FAN MOTOR DISCONNECT SWITCH

DANGER

FANS ROTATING OVERHEAD

FANS MAY START AUTOMATICALLY

LOCK FAN MOTOR DISCONNECT SWITCH IN OFF POSITION BEFORE SERVICING

DO NOT REMOVE OR DEFACE THIS LABEL 270590PA

DO NOT CHANGE THE SPEED OF THIS FAN WITHOUT FIRST CONSULTING BALTIMORE AIRCOIL COMPANY.

A CHANGE IN FAN ROTATIONAL SPEED FROM THE FACTORY SETTING MAY CAUSE OPERATION OF THE FAN AT A "CRITICAL SPEED" WHICH COULD RESULT IN A FAN FAILURE WITH POSSIBLE SERIOUS PERSONAL INJURY.

MODEL A838 HP 5.0 PH 3 HZ 60 RPM 1735 DES B

FRAME 184T TYPEUTN ENCL TE SF 1.15 CODE H NEMA NOM EFFICIENCY 84.0

VOLTS 230/460 ID X02X013R182F INSUL CLASS F

FL AMPS 13.8/6.9 SHAFT END BRG 6206-2RS MAX AMB 40°C

PART NO. 220317 1054 AIR VELOCITY RATED DUTY:CONT

SELF-LUBRICATED FOR NORMAL BEARING LIFE

U.S. ELECTRICAL MOTORS DIVISION OF EMERSON ELECTRIC CO. ST. LOUIS, MO MADE IN U.S.A. 391841-132

HI VOLT LO VOLT

DANGER

DO NOT CHANGE THE SPEED OF THIS FAN WITHOUT FIRST CONSULTING BALTIMORE AIRCOIL COMPANY

A CHANGE IN FAN ROTATIONAL SPEED FROM THE FACTORY SETTING MAY CAUSE OPERATION OF THE FAN AT A "CRITICAL SPEED" WHICH COULD RESULT IN A FAN FAILURE WITH POSSIBLE SERIOUS PERSONAL INJURY.

DO NOT REMOVE OR DEFACE THIS LABEL