

1993 Frick Rotary Screw Compressor Package- 250 HP

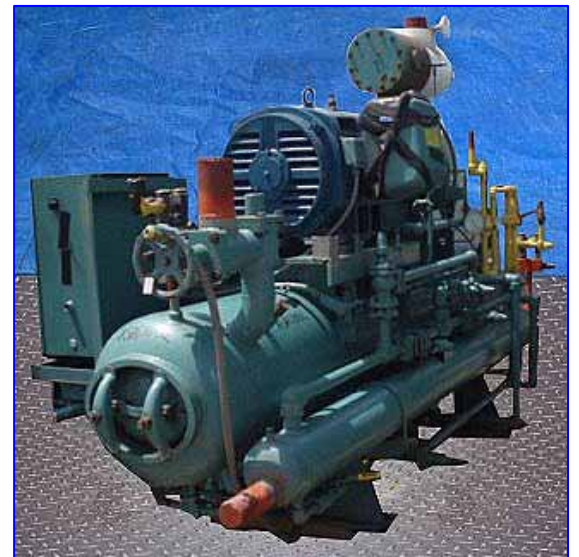
Mfg: Frick

Model: RWB II 100

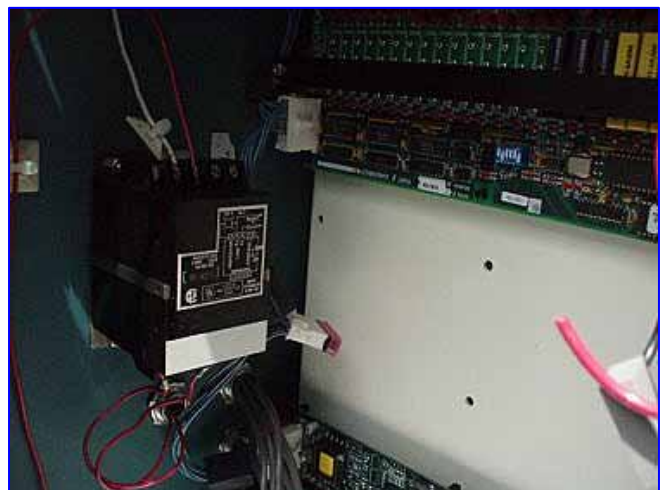
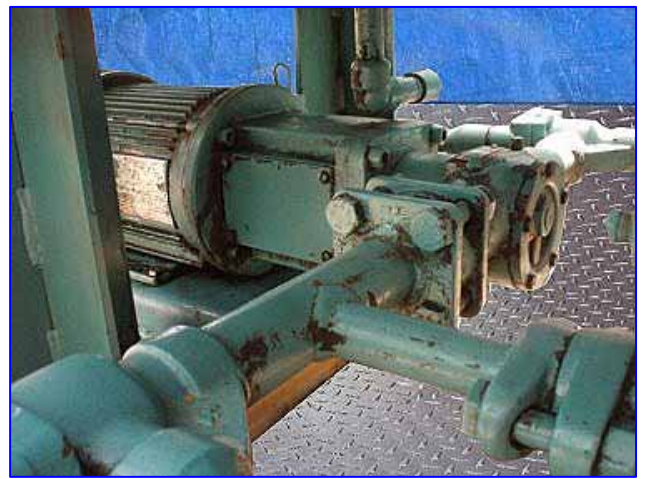
Stock No.: ASAC002

Serial No.: S0650MFMCTHAA3

1993 Frick Rotary Screw Compressor Package- 250 HP. Model: RWB II 100. S/N: S0650MFMCTHAA3. Frick Rotary Screw Compressor, Model and S/N: TDSH193S1873C, refrigerant: NH3/R-22, volume ratio: 22-50, maximum speed: 4500, maximum design pressure: 362 psig. Frick Oil Separator, S/N: 112866, MAWP: 300 psi @ 200 °F, MDMT: -20 °F @ 10.2 psi. Frick Oil Cooler, S/N: 112834, MAWP shell side: 300 psi @ 200 °F, MDMT shell side: -20 °F @ 3.6 psi, MAWP tube side: 300 psi @ 200 °F, MDMT tube side: -20 °F @ 3.6 psi. Ram Premium Efficiency Motor, 250 hp, 3570 rpm, 230/460 V, 560/280 amps, 60 Hz, 3 phase. Frick Quantum control panel. Viking Rotary Pump, Model: HV2953, S/N: 10366374. U.S. Motor, 3 hp, 1750 rpm, 60 Hz, 3 phase. Inlets: (1) 5 in. dia. suction port. Outlets: (1) 4 in. dia. discharge port. Overall dimensions: 12 ft. 5 in. L x 4 ft. 8 in. W x 8 ft. 2 in. H. Compressor run time: 75,012 hrs.(ACN699a).











| FRICK "DBS" IN-LINE SOLID STATE COMPRESSOR STARTER | | | |
|--|--------------------------|--------------------------|-----------------------|
| CUSTOMER: FRICK | CUSTOMER CODE FRIC01 | | |
| JOB.# 099892 | P.O.# P250455 | CUSTOMER'S SALES ORDER # | |
| QTY. 1 | RAM ASSEMBLY # FK42BL3.0 | | |
| SCHEMATIC DRAWING # 208082 | | REV. A | LAYOUT DRAWING # 2065 |
| STARTER SPECIFICATIONS | | | |
| INCOMING POWER | | | |
| VOLTS: | 460 | | |
| HZ: | 60 | | |
| COMPRESSOR MOTOR DATA | | | |
| H.P.: | 250 | STALL TIME: | 13 |
| FLA: | 279 | LRA: | 2100 |
| | | LRC: | 752.7 % |

| | | | | |
|--|---------|------------|-----------|-----------|
| YORK INTERNATIONAL | SS# | 099892 | WB# | 239145 |
| | OW# | 206082 | BJ# | 205 |
| | DOM# | FK42BL3.0 | | |
| | PART # | FK42BL3.0 | | |
| | TYPE | DBR/INLINE | VOLTS | 460 |
| | | | HZ | 60 |
| | | | PH | 3 |
| | LARGEST | IP | 250 FLA | 279 |
| | TOTAL | IP | 279 FLA | 2100 |
| | | | WITHSTAND | ESKA |
| INSTALL THIS EQUIPMENT IN ACCORDANCE WITH NEC REQUIREMENTS. CHECK ALL TERMINATIONS FOR TIGHTNESS PRIOR TO ENERGIZING THIS EQUIPMENT. FIELD INSTALLED CONDUCTORS SHALL BE AT LEAST 1/2" MINIMUM ON CIRCUITS SUPPLYING 100 AMPS OR LARGER. 40-20172 IN 4" W/ AND 100 AMP. USE COPPER CONDUCTORS ONLY. | | | | |
| WARNING | | | | |
| THE OPENING OF THE BRANCH CIRCUIT PROTECTIVE DEVICE MAY INDICATE THAT A FAULT CURRENT HAS BEEN INTERRUPTED. TO REDUCE THE RISK OF FIRE OR ELECTRICAL SHOCK, COMPONENTS SHOULD BE EXAMINED AND REPLACED IF DAMAGED. IF BURNOUT OF THE CURRENT ELEMENT OCCURS, THE COMPLETE OVERLOAD RELAY MUST BE REPLACED. | | | | |
| E78083 | | | | LA 287384 |
| RECOMMENDED TIGHTENING TORQUE | | | | |
| <small>Unless Otherwise Noted on Individual Devices</small> Slotted Head No. 10 and Larger Hex Head or | | | | |