

Baltimore Aircoil Company Evaporative Condenser-1800 Tons

Mfg: Baltimore Aircoil Company

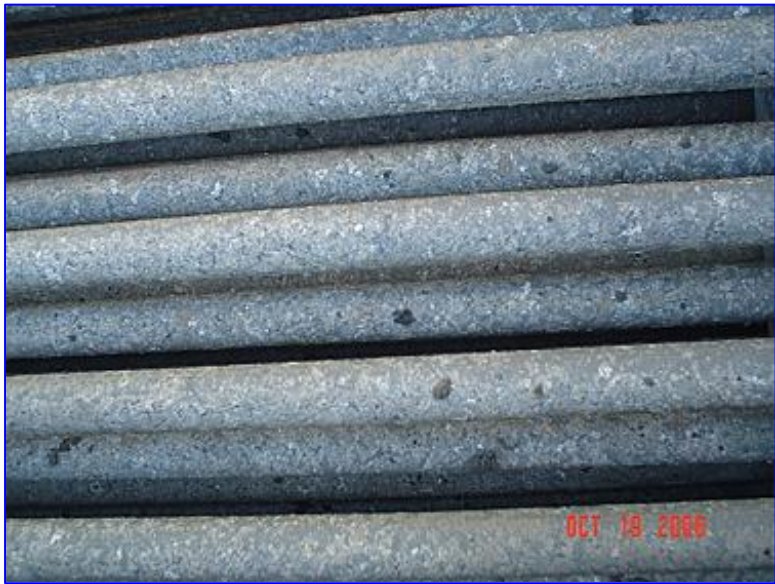
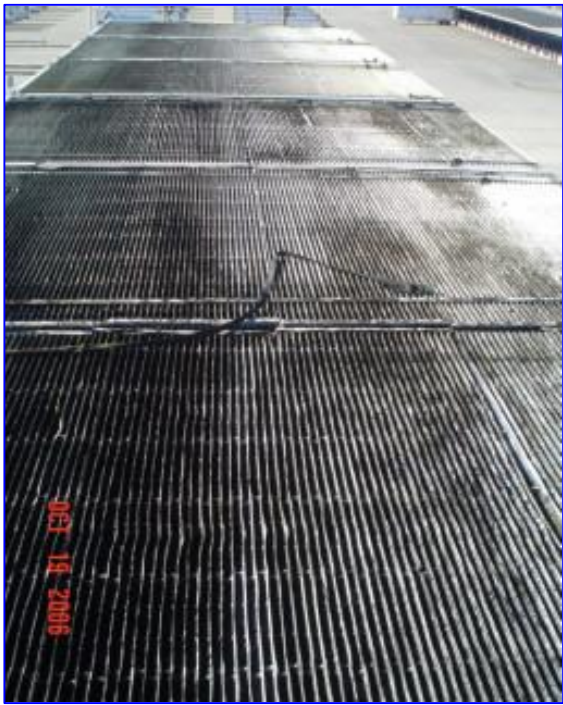
Model: VC2-1504

Stock No. ASLC001.

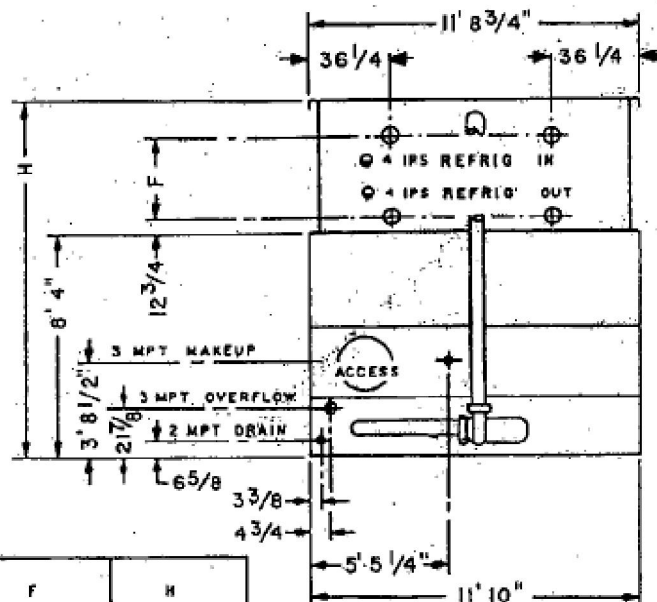
Serial No. 94201483

Baltimore Aircoil Company Evaporative Condenser-1800 Tons. Model VC2-1504. S/N 94201483. Belt No. 3BP150. With pan heaters, 22,792.5 mbh @ 95°F condensing and 66°F wetbulb. Dimensions 35 ft. 6 in. L x 11 ft. 10 in. W.





S/N 94201483
VC2-1504



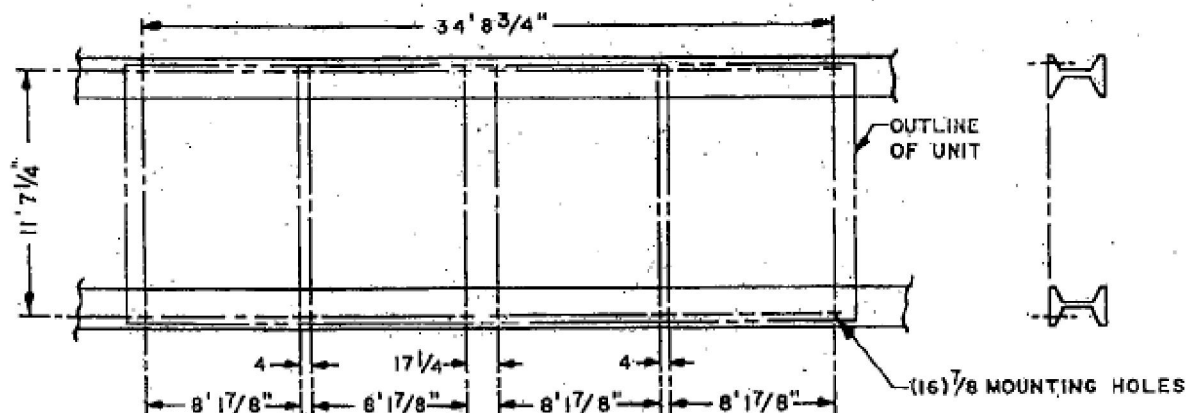
⊙ I.P.S. BEVELLED FOR WELDING

Ⓜ FAN MOTOR LOCATION

MODEL NO.	APPROX. SHIPPING WEIGHT	APPROX. OPERATING WEIGHT	HEAVIEST SECTION (COIL)	F	H
C2601-L	38540	66620	14300*	24	12'-10 1/4"
C2602-K	44420	73170	15170	33 1/4	13'-7 1/2"
C2602-L	44640	73390	15170	33 1/4	13'-7 1/2"
C2602-M	44680	73430	15170	33 1/4	13'-7 1/2"
C2603-L	50880	80380	18280	42 1/2	14'-4 3/4"
C2603-M	50920	80330	18280	42 1/2	14'-4 3/4"
C2604-M	57140	87210	21400	51 3/4	15'-2"
VC2-1504	57340	87410	21400	51 3/4	15'-2"

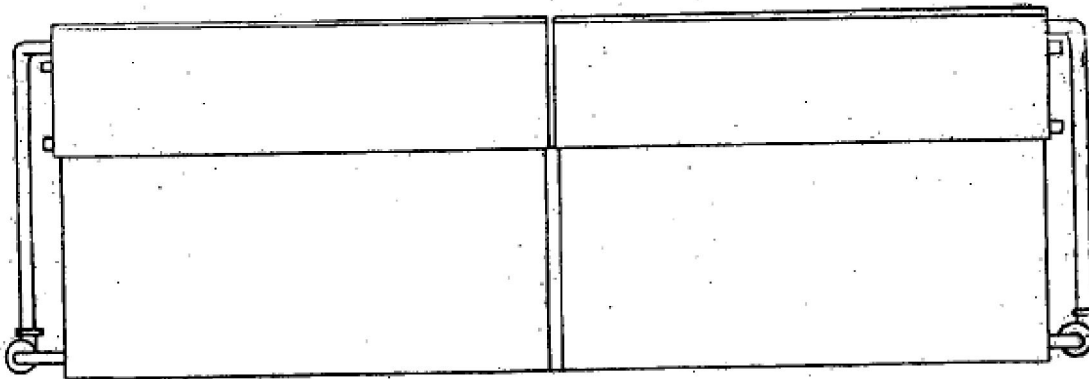
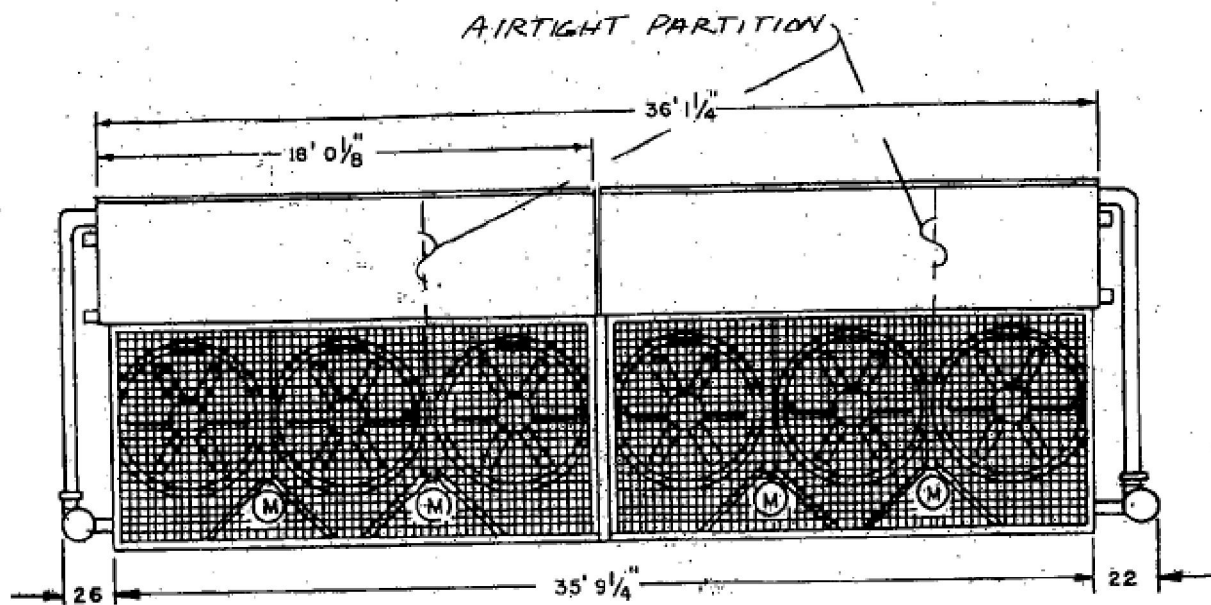
* PAN IS HEAVIEST SECTION

SUGGESTED SUPPORT DETAILS



NOTES:

1. THE RECOMMENDED SUPPORT ARRANGEMENT FOR C2000 UNITS CONSISTS OF TWO PARALLEL I-BEAMS EXTENDING THE FULL LENGTH OF THE UNIT. SUPPORTS AND ANCHOR BOLTS ARE TO BE DESIGNED AND FURNISHED BY OTHERS.
2. ALL SUPPORTING BEAMS ARE TO BE FLUSH AND LEVEL AT TOP AND MUST BE ORIENTED RELATIVE TO GAGE LINE AS SHOWN.
3. RECOMMENDED DESIGN LOADS FOR EACH BEAM SHOULD BE 70% OF THE TOTAL UNIT OPERATING WEIGHT APPLIED AS A UNIFORM LOAD TO EACH BEAM. BEAMS SHOULD BE DESIGNED IN ACCORDANCE WITH STANDARD STRUCTURAL PRACTICE. THE MAXIMUM ALLOWABLE DEFLECTION OF BEAMS UNDER THE UNIT SHALL BE 1/2 OF AN INCH.
4. ALL MOUNTING HOLES ARE 7/8 INCH DIAMETER AT THE LOCATIONS SHOWN.
5. IF VIBRATION ISOLATORS ARE USED, A RAIL OR CHANNEL MUST BE PROVIDED BETWEEN THE UNIT AND THE ISOLATORS TO PROVIDE CONTINUOUS UNIT SUPPORT. ADDITIONALLY, THE SUPPORT BEAMS MUST BE DESIGNED TO ACCOMMODATE THE OVERALL LENGTH AND MOUNTING HOLE LOCATION OF THE ISOLATORS WHICH MAY DIFFER FROM THOSE OF THE UNIT. REFER TO VIBRATION ISOLATOR DRAWINGS FOR THIS DATA.



NOTES:

1. ALL DIMENSIONS ARE IN FEET AND INCHES. WEIGHTS ARE IN POUNDS.
2. UNLESS OTHERWISE INDICATED, ALL CONNECTIONS 6 INCHES AND SMALLER ARE MPT AND CONNECTIONS 8 INCHES AND LARGER ARE BEVELLED FOR WELDING.
3. DIMENSIONS SHOWING LOCATION OF COIL CONNECTIONS ARE APPROXIMATE AND SHOULD NOT BE USED FOR PREFABRICATION OF CONNECTING PIPING.
4. SPRAY WATER, OVERFLOW, AND COIL CONNECTIONS ARE PROVIDED ON BOTH ENDS OF THE UNIT. ONLY ONE MAKE-UP CONNECTION IS FURNISHED, ON THE END INDICATED.

B.A.C. ORDER NO. 94201483	BALTIMORE AIRCOIL	EVAPORATIVE CONDENSER
DATE 8/19/94		DWG. NO. BAC-8209 BP