

## Baltimore Aircoil Company Evaporative Condenser

Mfg: Baltimore Aircoil Company

Model: VC2-982

Stock No. ASLC002.

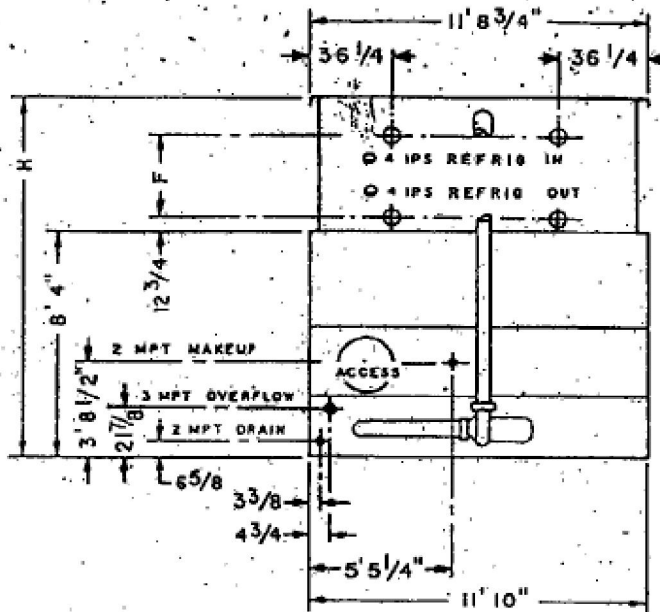
Serial No. 94201484

Baltimore Aircoil Company Evaporative Condenser-1240 Tons. Model VC2-982. S/N 94201484. Belt No. 2BP150 With pan heaters, 14,882 mbh @95 °F condensing and 66 °F wetbulb.





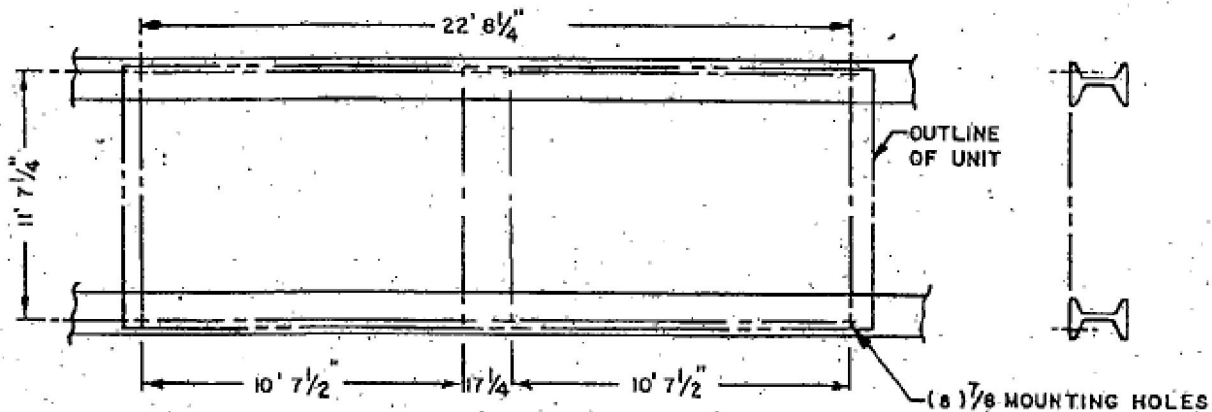
VCL-982 (S/N 94201484)



- I.P.S. BEVELLED FOR WELDING
- Ⓜ FAN MOTOR LOCATION.

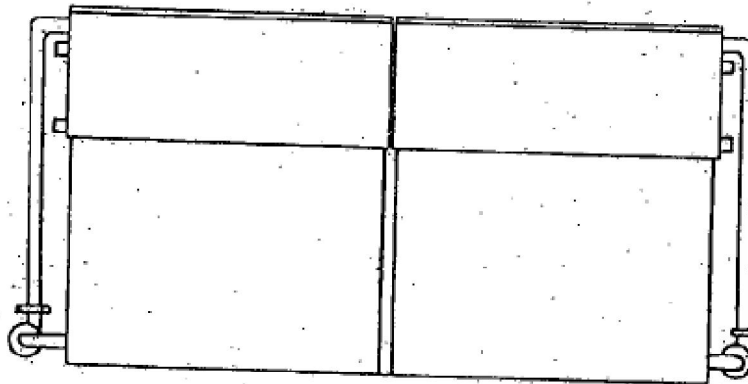
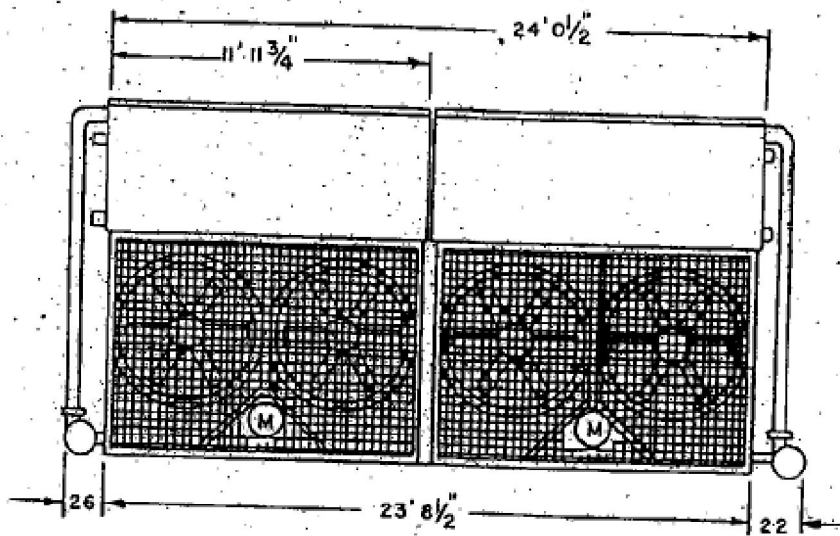
MODEL NO.	APPROX. SHIPPING WEIGHT	APPROX. OPERATING WEIGHT	HEAVIEST SECTION (COIL)	F	H
02602-K	30670	40600	10300	33 1/4	13' 7 1/2"
02602-L	30670	40600	10300	33 1/4	13' 7 1/2"
02602-L	34810	54210	12370	42 1/2	14' 4 3/4"
02602-M	34930	54250	12370	42 1/2	14' 4 3/4"
VCL-982	38590	58460	14490	51 3/4	14' 6"

SUGGESTED SUPPORT DETAILS



NOTES:

1. THE RECOMMENDED SUPPORT ARRANGEMENT FOR C2000 UNITS CONSISTS OF TWO PARALLEL I-BEAMS EXTENDING THE FULL LENGTH OF THE UNIT. SUPPORTS AND ANCHOR BOLTS ARE TO BE DESIGNED AND FURNISHED BY OTHERS.
2. ALL SUPPORTING BEAMS ARE TO BE FLUSH AND LEVEL AT TOP AND MUST BE ORIENTED RELATIVE TO CAGE LINE AS SHOWN.
3. RECOMMENDED DESIGN LOADS FOR EACH BEAM SHOULD BE 70% OF THE TOTAL UNIT OPERATING WEIGHT APPLIED AS A UNIFORM LOAD TO EACH BEAM. BEAMS SHOULD BE DESIGNED IN ACCORDANCE WITH STANDARD STRUCTURAL PRACTICE. THE MAXIMUM ALLOWABLE DEFLECTION OF BEAMS UNDER THE UNIT SHALL BE 1/2 OF AN INCH.
4. ALL MOUNTING HOLES ARE 7/8 INCH DIAMETER AT THE LOCATIONS SHOWN.
5. IF VIBRATION ISOLATORS ARE USED, A RAIL OR CHANNEL MUST BE PROVIDED BETWEEN THE UNIT AND THE ISOLATORS TO PROVIDE CONTINUOUS UNIT SUPPORT. ADDITIONALLY, THE SUPPORT BEAMS MUST BE DESIGNED TO ACCOMMODATE THE OVERALL LENGTH AND MOUNTING HOLE LOCATION OF THE ISOLATORS WHICH MAY DIFFER FROM THOSE OF THE UNIT. REFER TO VIBRATION ISOLATOR DRAWINGS FOR THIS DATA.



NOTES:  
 ALL DIMENSIONS ARE IN FEET AND INCHES. WEIGHTS ARE IN POUNDS.  
 UNLESS OTHERWISE INDICATED, ALL CONNECTIONS 6 INCHES AND SMALLER ARE NPT AND CONNECTIONS 8 INCHES AND  
 LARGER ARE BEVELLED FOR WELDING.  
 DIMENSIONS SHOWING LOCATION OF COIL CONNECTIONS ARE APPROXIMATE AND SHOULD NOT BE USED FOR PREFABRICATION  
 OF CONNECTING PIPING.  
 PRAT WATER, OVERFLOW, AND COIL CONNECTIONS ARE PROVIDED ON BOTH ENDS OF THE UNIT. ONLY ONE MAKE-UP CONNECTION  
 FURNISHED; ON THE END INDICATED.

A.C.  
 ORDER NO. 94201484  
 DATE 8/19/94

BALTIMORE AIRCOIL

EVAPORATIVE CONDENSER  
 DWG. NO. BAC-8208 BP

