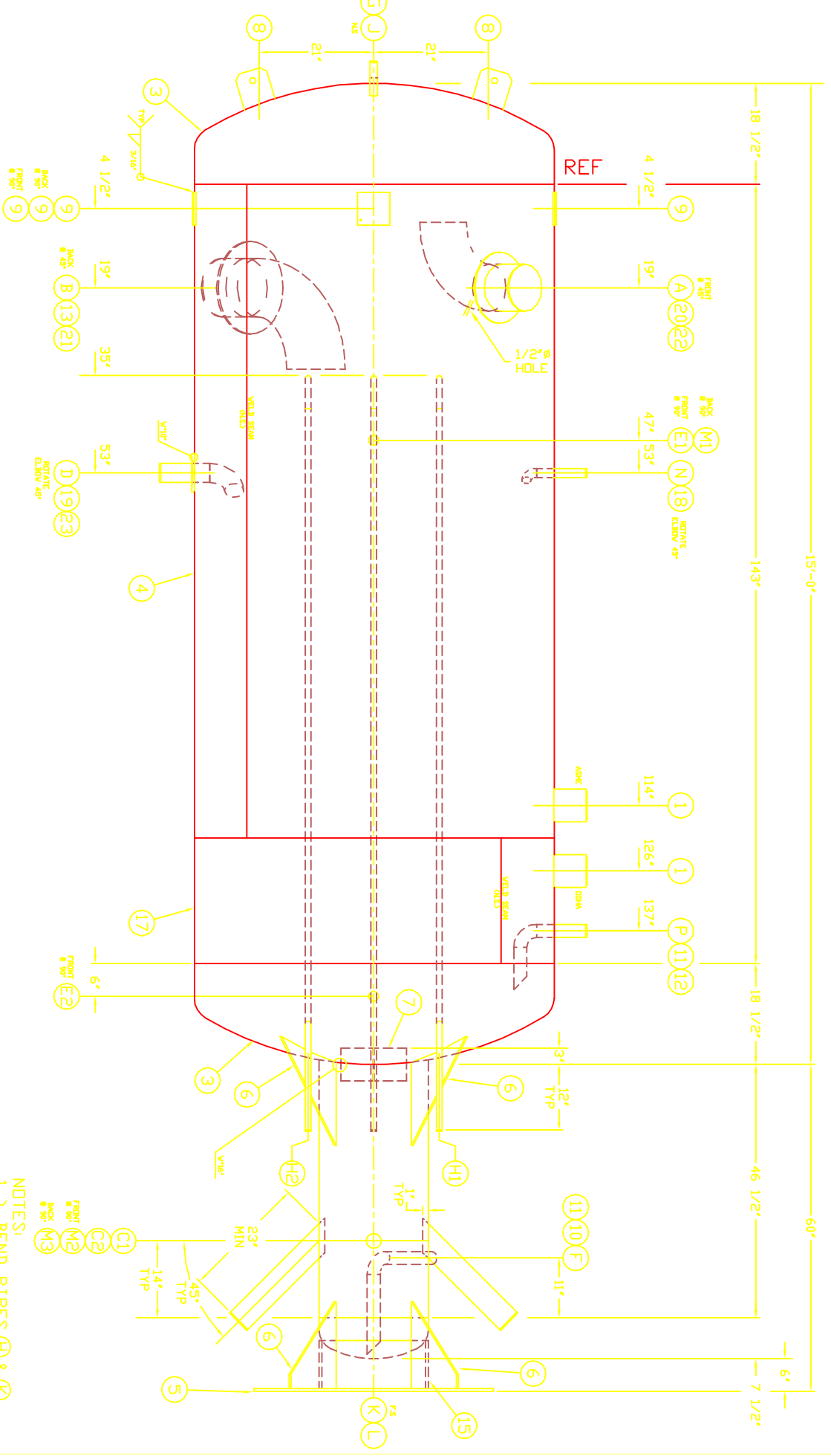
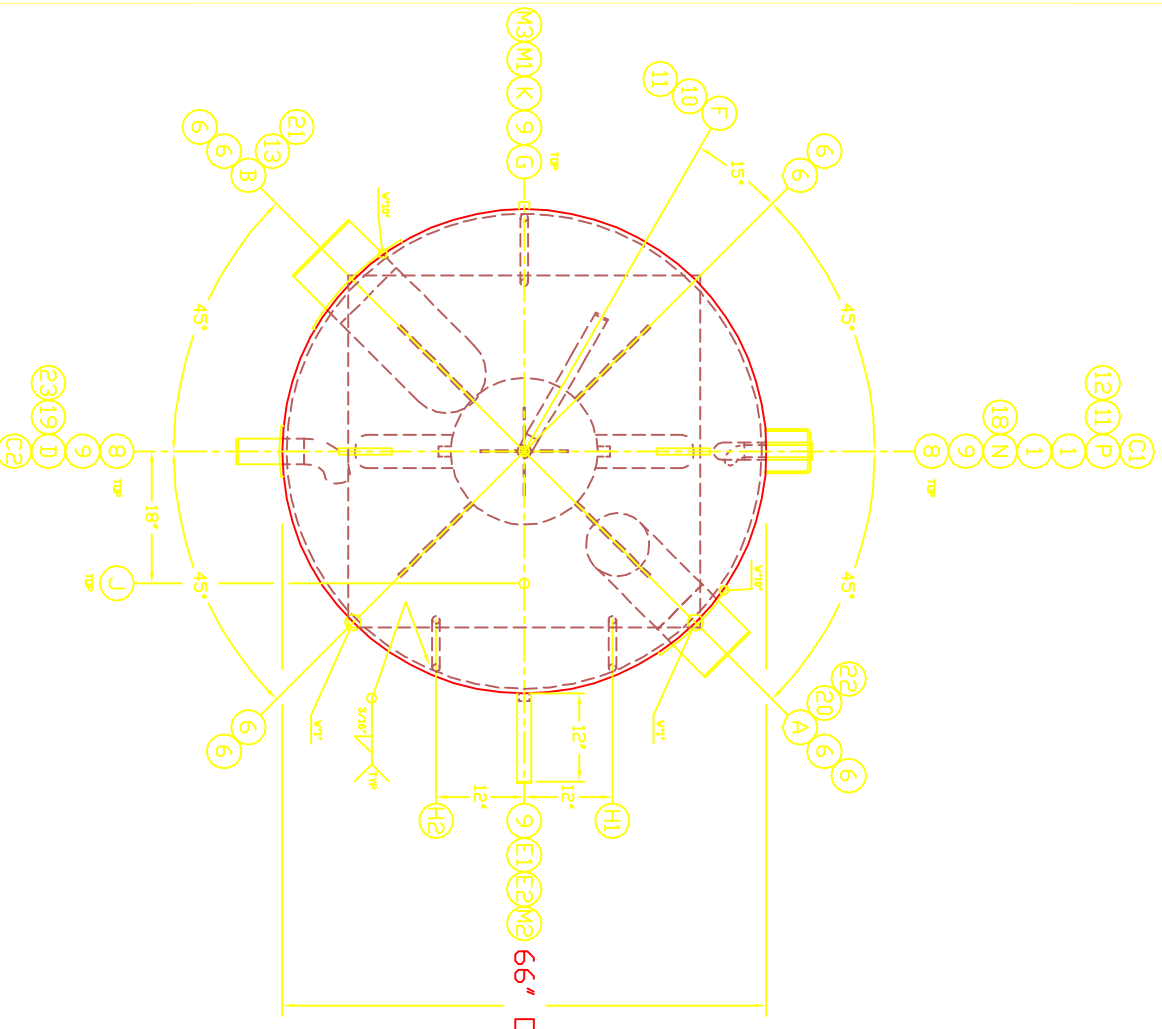
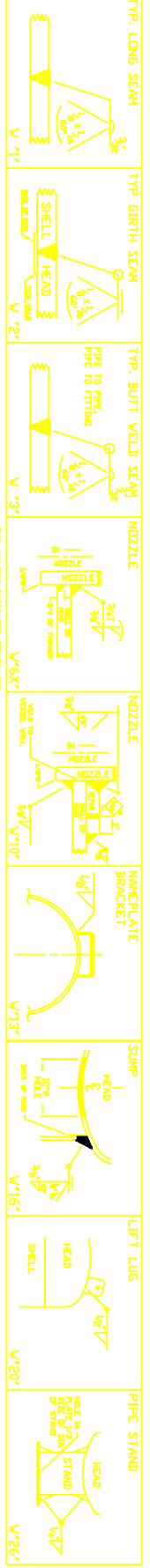


**GENERAL NOTES**

- ALL PIPE NOZZLES EXCEED 6" OUTSIDE SHELL UNLESS INDICATED OTHERWISE.
- ALL WELDS WPS 100, 1002, 1003, 2002, AND 4004 APPLY UNLESS INDICATED OTHERWISE.
- SA356-70 MAY BE SUBSTITUTED FOR SA356.
- SHELL PIPE MAY BE SUBSTITUTED FOR SA356 SEAMLESS AND VICE VERSA.
- ALL BOLT HOLES STRAIGHT THROUGH.
- ALL PIPE NOZZLES EXCEED 1/2" INSIDE SHELL UNLESS INDICATED OTHERWISE.



**NOTES:**

- BEND PIPES (H) & (K) AROUND AN 8" PIPE.
- NOTCH (C) TO CLEAR HEAD SEAM & NOZZLE (D) TO HEAD WELD.
- DRILL A 1/4" Ø HOLE NEAR ONE CORNER OF (Q)

**CAL. OSHA**

HD THD 5/8"  
SH THD 5/8"  
US GAL 2500  
SQ. FT. 278  
SURFACE

DIE STAMP DN REVERSE  
DF STD DATA PLATE

**TEST WITH ASME DATA PLATE**

ITEM	QTY	SIZE	TYPE	RATING	MATERIAL
P	1	2"	PIPE	S/40	SA356
N	1	1 1/4"	PIPE	S/80	SA356
M	3	3/4"	CPUG	30000	SA356
L	1	20"	PIPE	S/STD	SA356
K	1	3/4"	PIPE	S/80	SA356
J	1	1"	PIPE	S/80	SA356
I	2	3/4"	PIPE	S/80	SA356
H	2	3/4"	CPUG	30000	SA356
G	1	3/4"	PIPE	S/40	SA356
F	1	3/4"	PIPE	S/40	SA356
E	2	1 1/2"	PIPE	S/80	SA356
D	1	3"	PIPE	S/40	SA356
C	2	4"	PIPE	S/40	SA356
B	1	10"	PIPE	S/40	SA356
A	1	8"	PIPE	S/40	SA356

**BILL OF MATERIALS**

ITEM	QTY	SIZE	TYPE	RATING	MATERIAL
28	1	3 3/4" ID X 7' LD	PLATE	S/8"	SA356-70
22	1	13" OD X 8 7/8" ID	PLATE	3/8"	SA356-70
21	1	17" OD X 11" ID	PLATE	3/8"	SA356-70
20	1	8"	ELBOW	S/40	SA356-VPB
19	1	8"	ELBOW	S/40	SA356-VPB
18	1	1 1/4"	ELBOW	S/80	SA356-VPB
17	1	66" OD	ROLLED SHELL	S/8"	SA356-70

**VESSEL DESIGN SPECIFICATIONS**

CUSTOMER	TRI-CDM REFRIGERATION / LUCKY STORES
P. D. NO.	24024
DESIGN & CONSTRUCTION IN ACCORDANCE WITH SECTION VIII DIV. 1 ASME CODE FOR PRESSURE VESSELS	EDITION & ADDENDA TO 1992
DESIGNER	MM
DRAWN BY	MM
CHECKED BY	MM
DATE	2-23-95
TITLE	66" D.D. X 15'-0" VERT 250# ASME ACCUMULATOR
SCALE	1"=1'-0"
SERIAL NO.	94804
DRAWING NO.	L0403-5D

**Refrigeration Valves & Systems Corp.**  
 Precision  
 Bryan, Texas 77808